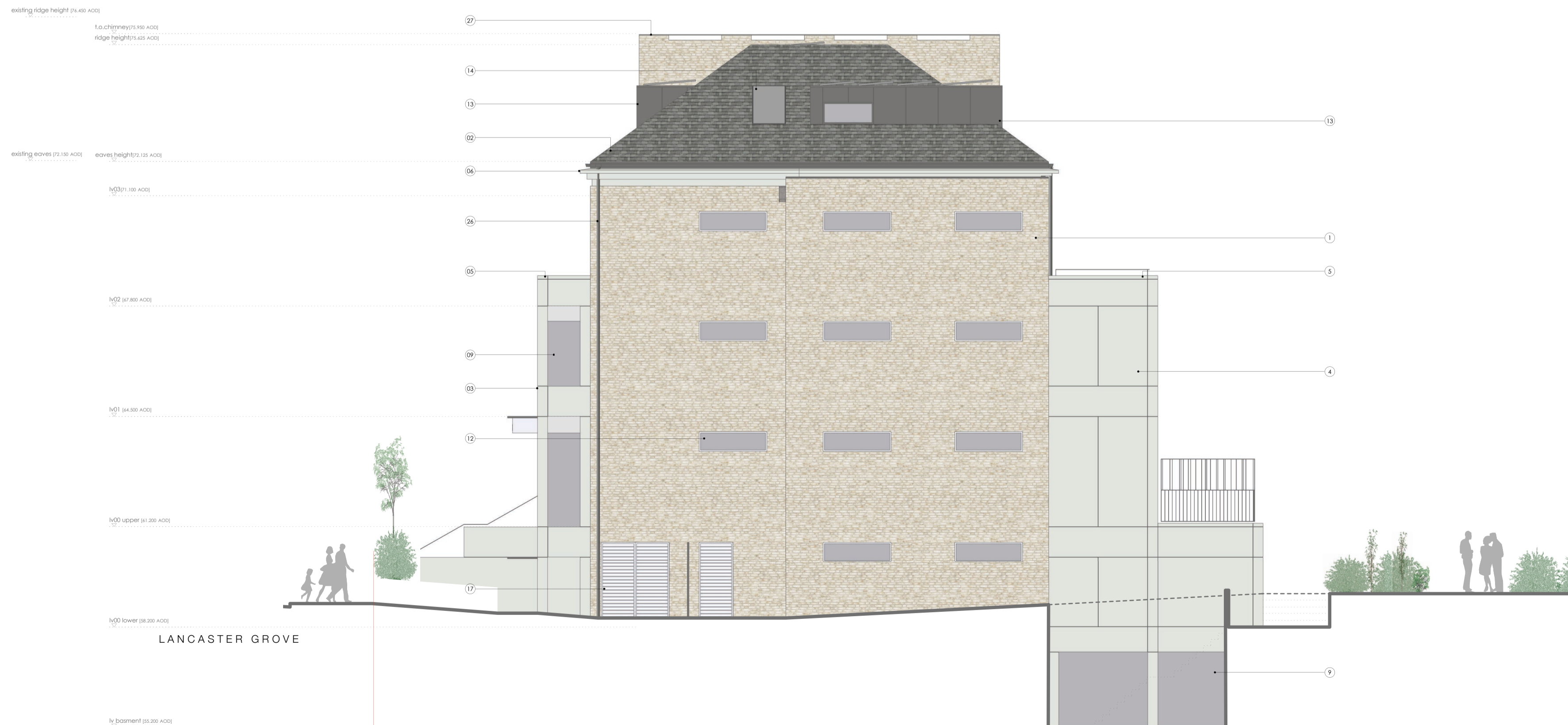
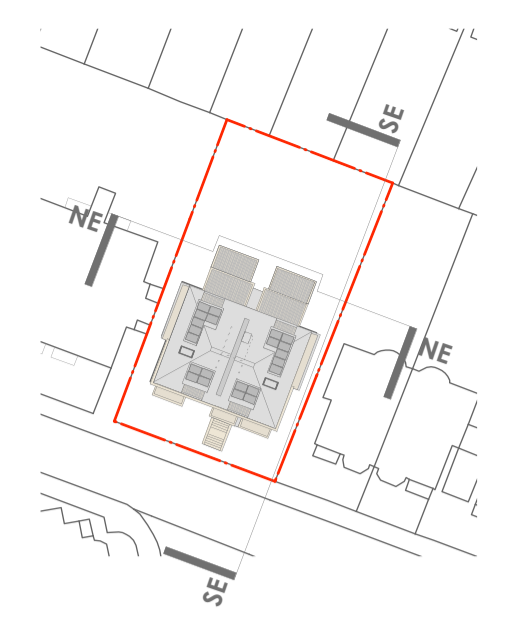




01 PROPOSED NORTH-EAST ELEVATION (NE)
SCALE 1:100



02 PROPOSED SOUTH-EAST ELEVATION (SE)
SCALE 1:100



- © John Parley Architects
- Do not Scale. Used figured dimensions only.
 - All dimensions to be checked on site.
 - All drawings to be read in conjunction with engineer's drawings. Any discrepancies between consultants drawings to be reported to the Architect before any work commences.
 - The Contractor's attention is drawn to the Health & Safety matters identified in the Health & Safety plan and on drawings as being potentially hazardous.
 - These items should not be considered as a full and final list.
 - The Work Package Contractor's normal Health & Safety obligations still apply when undertaking constructional operations both on and off site.

- MATERIAL LEGEND**
- 01] BRICK: rough surface, stretcher bond, flush pointed natural mortar - colour mixed white London stock (Preston flag D78 or similar alternative)
 - 02] ROOFING: natural slate to match adjacent villa blocks
 - 03] PRECAST BAYS: flush jointed reconstituted stone panels, acid etched - colour white stone
 - 04] PRECAST PANELS: flush jointed reconstituted stone panels, acid etched - colour white stone
 - 05] PRECAST CORNICE: flush jointed reconstituted stone coping, acid etched - colour white stone
 - 06] PRECAST CORNICE: flush jointed profiled reconstituted stone coping, acid etched - colour white stone
 - 07] PRECAST COLUMNS: flush jointed reconstituted stone columns, acid etched - colour white stone
 - 08] WINDOWS/DOORS 1: windows with precast lining, outer finish satin powder coated metal, with head and sill to match - colour light grey (RAL 7033), all lower floor level opening and accessible windows to be BS PAS 24-2012 with P1A rated laminated glass
 - 09] WINDOWS 2: outer finish powder coated metal, with head and sill to match - colour light grey (RAL 7033), all lower floor level opening and accessible windows to be BS PAS 24-2012 with P1A rated laminated glass
 - 10] WINDOWS 3: outer finish satin powder coated metal - colour brown/grey (RAL 7013)
 - 11] SPANDREL PANELS 1: flush frameless metallic panels, outer finish satin powder coated metal to match windows 3 - colour brown/grey (RAL 7013)
 - 12] WINDOWS 4: clerestory windows, outer finish satin powder coated metal, with sill to match - colour light grey (RAL 7033)
 - 13] DORMER WINDOWS: metal with heavy gauge edge profile - colour dark grey to match slate, balcony door frame outer finish powder coated metal - colour colour light grey (RAL 7033)
 - 14] ROOF LIGHT: outer finish powder coated metal - colour grey/brown (RAL 7013)
 - 15] ENTRANCE DOORS: solid core with lacquered outer finish metal powder coated - colour colour light grey (RAL 7033), flush frameless metal side panels with outer finish powder coated metal - colour colour light grey (RAL 7033), to be BS PAS 24-2012 or acceptable enhanced security standard, integrated audio visual access control
 - 16] RESIDENTIAL DOORS: solid core with outer finish powder coated metal - colour light grey (RAL 7033), to be BS PAS 24-2012 or acceptable enhanced security standard
 - 17] BATHROOM DOORS: metal louvre doors - colour light grey (RAL 7033), self closing and locking
 - 18] CORNING: anodised aluminium profiles
 - 19] CANOPY: metal canopy with signage
 - 20] BALUSTRADE: metal balustrade and handrail - colour brown/grey (RAL 7013)
 - 21] GREEN WALLS: generally vine planting to trained wire or mesh supports, free box green wall system at rear of building, vertical rain garden, filtering roof/water runoff, to landscape architect's specification
 - 22] GATES: metal vertical fins - painted finish, self closing and locking, colour brown/grey (RAL 7013)
 - 23] EXTERNAL STEPS: precast concrete with natural stone tiling
 - 24] PV PANELS: photovoltaic panels mounted horizontally to dormers
 - 25] BALCONY DECK: high performance sheet system with insulation and paving slabs
 - 26] RAINWATER GOODS: Lindab or similar alternative powder coated metal - colour brown/grey (RAL 7013 brown/grey)
 - 27] CHIMNEY: rolled party wall parapet element - back to match main body with metal cowl
 - 28] BAT BOXES: integrated box - Schwieger IFR or similar alternative

rev	date	initials	description

PROPOSED ELEVATIONS-SHEET 02

project:
5-7 LANCASTER GROVE

drawing no: 1409/4001
status code/ revision: P1

status:
PLANNING

scale @ A1: 1:100
date: FEB 2017



John Parley Architects
Beck Farm Studio, St Leonard's Road
East End, Hampshire, SO41 5SR
+44 (0) 1590 626465
www.johnparleyarchitects.com

