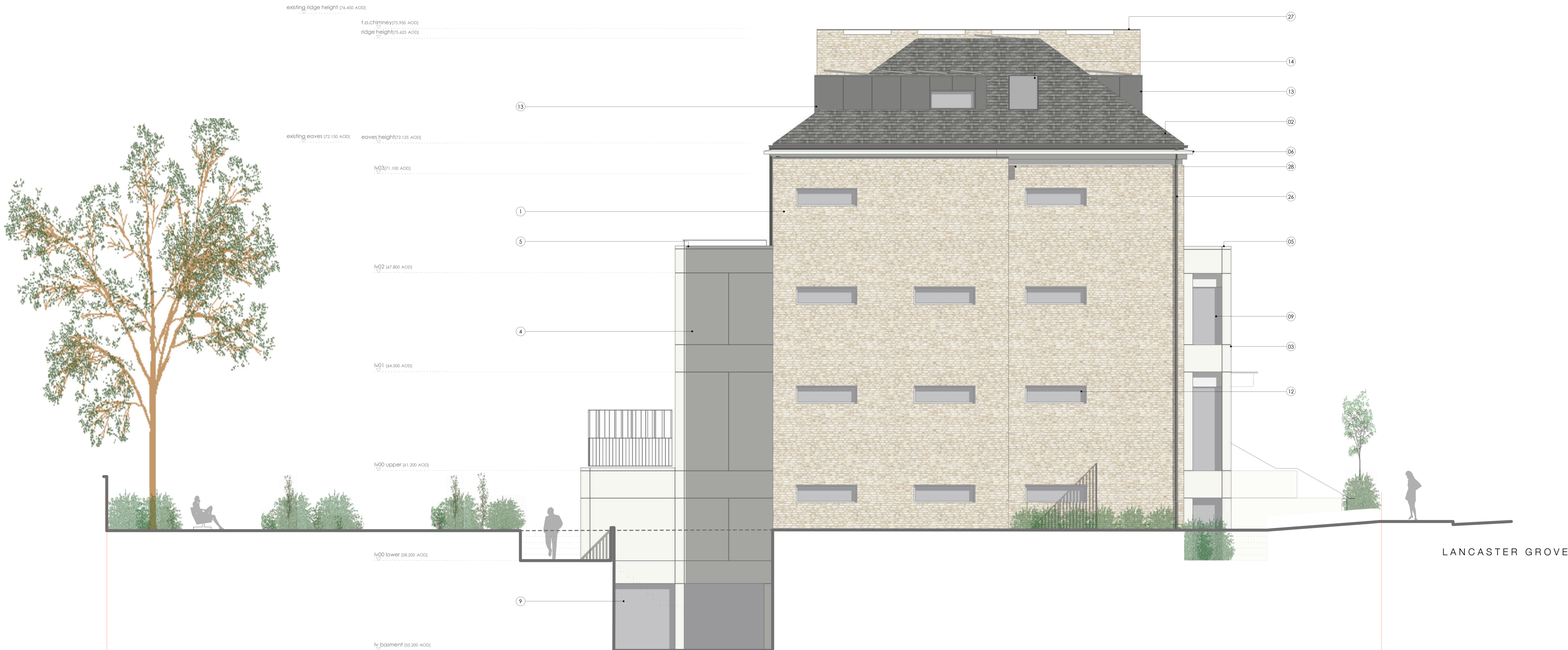




01 PROPOSED SOUTH-WEST ELEVATION [SW]
SCALE 1:100



02 PROPOSED NORTH-WEST ELEVATION [NW]
SCALE 1:100

- © john parley architects
- Do not Scale. Used figured dimensions only.
 - All dimensions to be checked on site.
 - All drawings to be read in conjunction with engineer's drawings. Any discrepancies between consultants drawings to be reported to the Architect before any work commences.
 - The Contractor's attention is drawn to the Health & Safety matters identified in the Health & Safety plan and on drawings as being potentially hazardous.
 - These items should not be considered as a full and final list.
 - The Work Package Contractor's normal Health & Safety obligations still apply when undertaking constructional operations both on and off site.
- MATERIAL LEGEND**
- 01] BRICK: rough surface, stretcher bond, flush pointed natural mortar - colour mixed white london stock (Petersen flag 078 or similar alternative)
- 02] ROOFING: natural slate to match adjacent villa blocks
- 03] PRECAST BAYS: flush jointed reconstituted stone panels, acid etched - colour white stone
- 04] PRECAST PANELS: flush jointed reconstituted stone panels, acid etched - colour white stone
- 05] PRECAST CORNING: flush jointed reconstituted stone coping, acid etched - colour white stone
- 06] PRECAST CORNICE: flush jointed profiled reconstituted stone coping, acid etched - colour white stone
- 07] PRECAST COLUMNS: flush jointed reconstituted stone columns, acid etched - colour white stone
- 08] WINDOWS/DOORS 1: windows with precast lining, outer finish satin powder coated metal, with head and sill to match - colour light grey (RAL 7033), all lower floor level opening and accessible windows to be BS PAS 24:2012 with P1A rolled laminated glass
- 09] WINDOWS 2: outer finish powder coated metal, with head and sill to match - colour light grey (RAL 7033), all lower floor level opening and accessible windows to be BS PAS 24:2012 with P1A rolled laminated glass
- 10] WINDOWS 3: outer finish satin powder coated metal - colour brown/grey (RAL 7013)
- 11] SPANDREL PANELS 1: flush frameless metallic panels, outer finish satin powder coated metal to match windows 3 - colour brown/grey (RAL 7013)
- 12] WINDOWS 4: clerestory windows, outer finish satin powder coated metal, with sill to match - colour light grey (RAL 7033)
- 13] DORMER WINDOWS: metal with heavy gauge edge profile - colour dark grey to match slate, balcony door frame outer finish powder coated metal - colour colour light grey (RAL 7033)
- 14] ROOF LIGHT: outer finish powder coated metal - colour grey/brown (RAL 7013)
- 15] ENTRANCE DOORS: solid core with lacquered outer finish metal powder coated - colour colour light grey (RAL 7033), flush frameless metal side panels with outer finish powder coated metal - colour colour light grey (RAL 7033), to be BS PAS 24:2012 or acceptable enhanced security standard, integrated audio visual access control
- 16] RESIDENTIAL DOORS: solid core with outer finish powder coated metal - colour light grey (RAL 7033), to be BS PAS 24:2012 or acceptable enhanced security standard
- 17] BREAKER DOORS: metal banded doors - colour light grey (RAL 7033), self closing and locking
- 18] CORNING: anodised aluminium profiles
- 19] CANOPY: metal canopy with glazing
- 20] BALUSTRADE: metal balustrade and handrail - colour brown/grey (RAL 7013)
- 21] GREEN WALLS: generally vine planting to trained wire or mesh supports, free box green wall system at rear of building is vertical rain garden filtering roof water runoff, to landscape architect's specification
- 22] GATES: metal vertical flats - painted finish, self closing and locking, colour brown/grey (RAL 7013)
- 23] EXTERNAL STEPS: precast concrete with natural stone tiling
- 24] PV PANELS: photovoltaic panels mounted horizontally to dormers
- 25] BALCONY DECK: high performance sheet system with insulation and paving slabs
- 26] RAINWATER GOODS: Lindab or similar alternative powder coated metal - colour brown/grey (RAL 7013 brown/grey)
- 27] CHIMNEY: rolled party wall parapet element - brick to match main body with metal cowl
- 28] BAT BOXES: integrated box - Schwegler 11R or similar alternative

P2	10.07.2017	GL	PLANNING AMENDMENT ISSUE
P1	23.10.2015	TW	PLANNING AMENDMENT ISSUE
rev	date	initials	description

drawing:

PROPOSED ELEVATIONS-SHEET 01

project:

5-7 LANCASTER GROVE

drawing no: status code/ revision:

1409/4000 P2

status:

PLANNING

scale @ A1: date:

1:100 FEB 2017

ipa

John Parley Architects
Beck Farm Studio, St Leonard's Road
East End, Hampshire, SO41 5SR
+44 (0) 1590 626465
www.johnparleyarchitects.com