

Tree protection plan
Location of trees, categorisation & protection/management proposals at 35a King Henry's Road, Primrose Hill, London

Permission is granted to scale from this drawing for Local Authority Planning Approval purposes relating to tree protection measures only. Where applicable this drawing is to be read in conjunction with the arboricultural report. This drawing is the copyright of Barrell Tree Consultancy 2017. ©

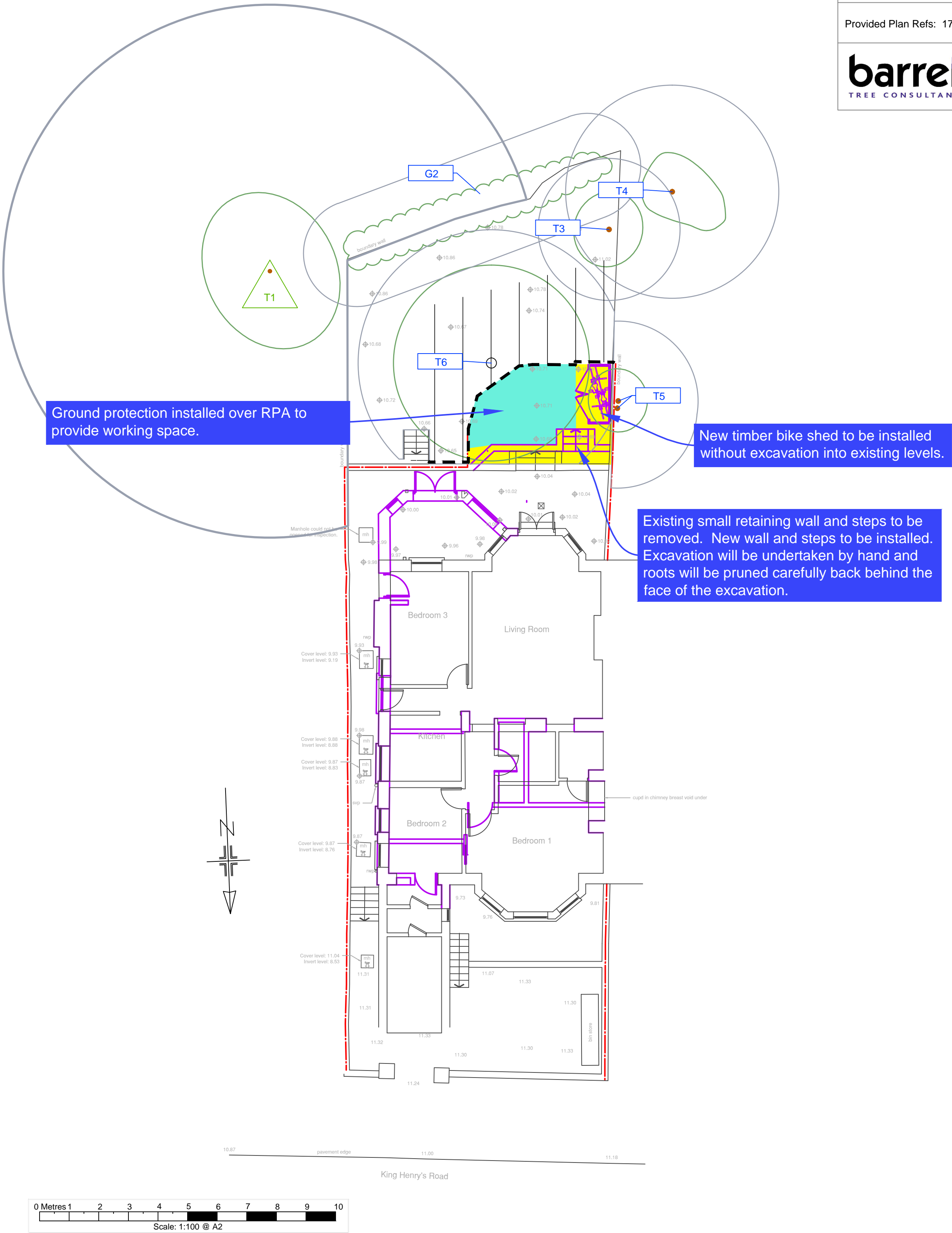
This drawing to be reproduced in colour only.

Barrell Plan Ref: 17170-BT1

Provided Plan Refs: 17274-01-01 & 170712_018-A-Plans.dwg



Field House, Fordingbridge Business Park,
Ashford Road, Fordingbridge SP6 1BY
Tel: 01425 651470 Fax: 01425 653449
www.barrelltreecare.co.uk



- BS category B Tree of moderate quality
- BS category C Trees of low quality
- Proposed layout
- Estimated tree positions not included on original land survey and/or adjusted crown spreads
- Construction exclusion zone (CEZ) to be protected by fencing

- Precautionary Areas
- Construction exclusion zone protected by ground protection
- Root protection area (RPA) boundary for category B tree
- Root protection area (RPA) boundaries for category C trees

Tree schedule

Tree No	Species	Category	RPA Radius	Tree Works
T1	Lime	B	9.0	-
G2	Bay, ivy	C	1.8	-
T3	Privet	C	2.4	-
T4	Plum	C	3.6	-
T5	Lawson cypress	C	2.7	-
T6	Japanese maple	C	4.5	-