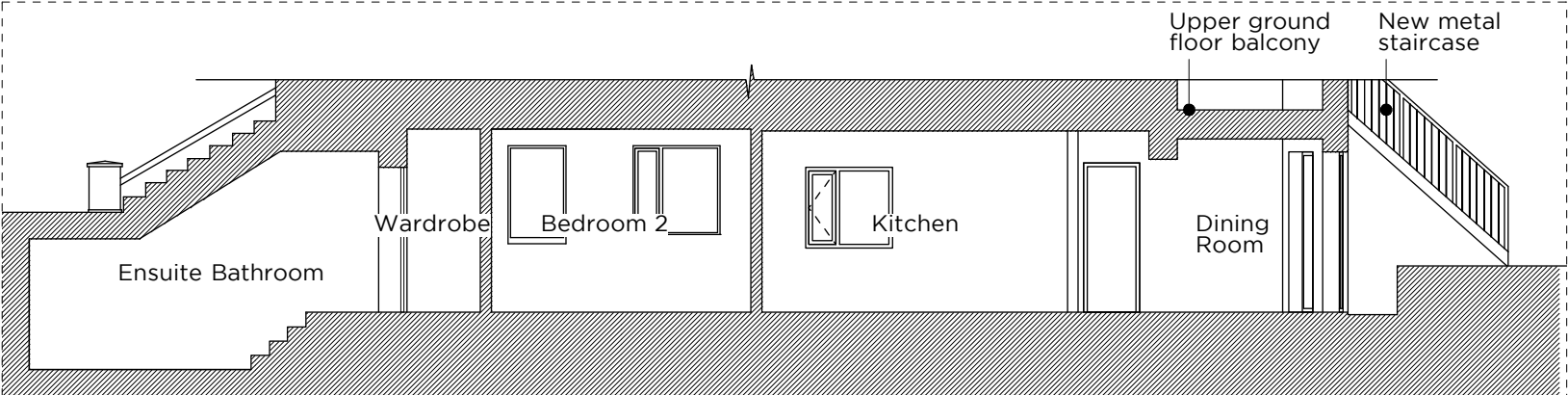


1. PROPOSED REAR ELEVATION



2. PROPOSED SECTION AA

Revision	Date	Issue
<div><div><div>Project:</div><div>35a King Henry's Road, NW3 3QR</div></div><div><div>Title:</div><div>Proposed Rear Elevation and Section AA</div></div><div><div>Client:</div><div>Jennifer Hildreth</div></div><div><div>Scale:</div><div>1:100 @ A3</div></div><div><div>Date:</div><div>17/07/17</div></div><div><div>Drawn:</div><div>WSC</div></div><div><div>Drawing:</div><div>018_105</div></div></div> <div><div>* Revision</div></div>		
<div><div><div><div></div><div></div><div></div></div><div>CW2 / ARCHITECTS</div><div>T / 07803 269526 E / shan@cw2architects.com W / www.cw2architects.com</div></div><div><div>© CW2/ARCHITECTS</div></div></div>		

