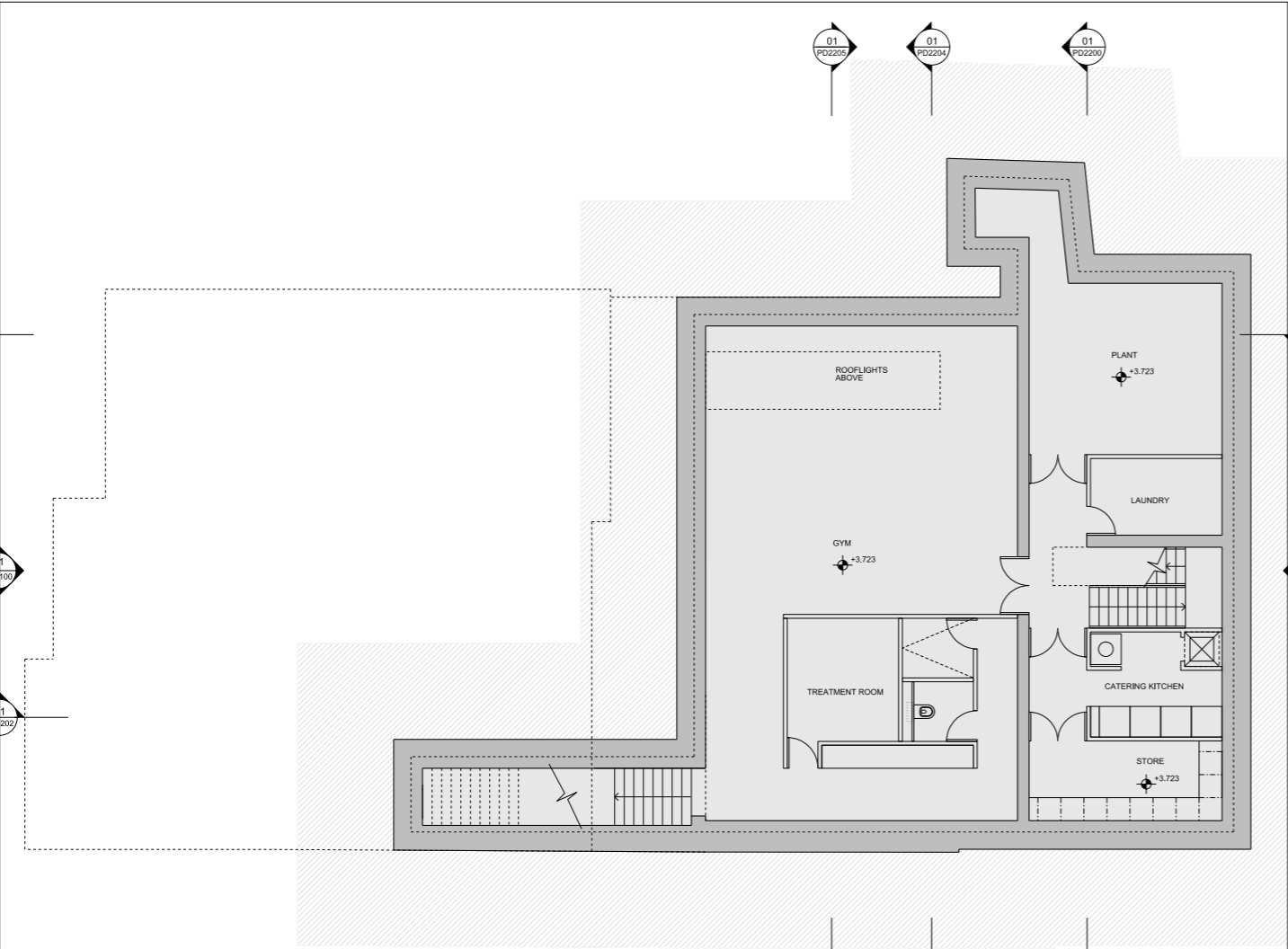
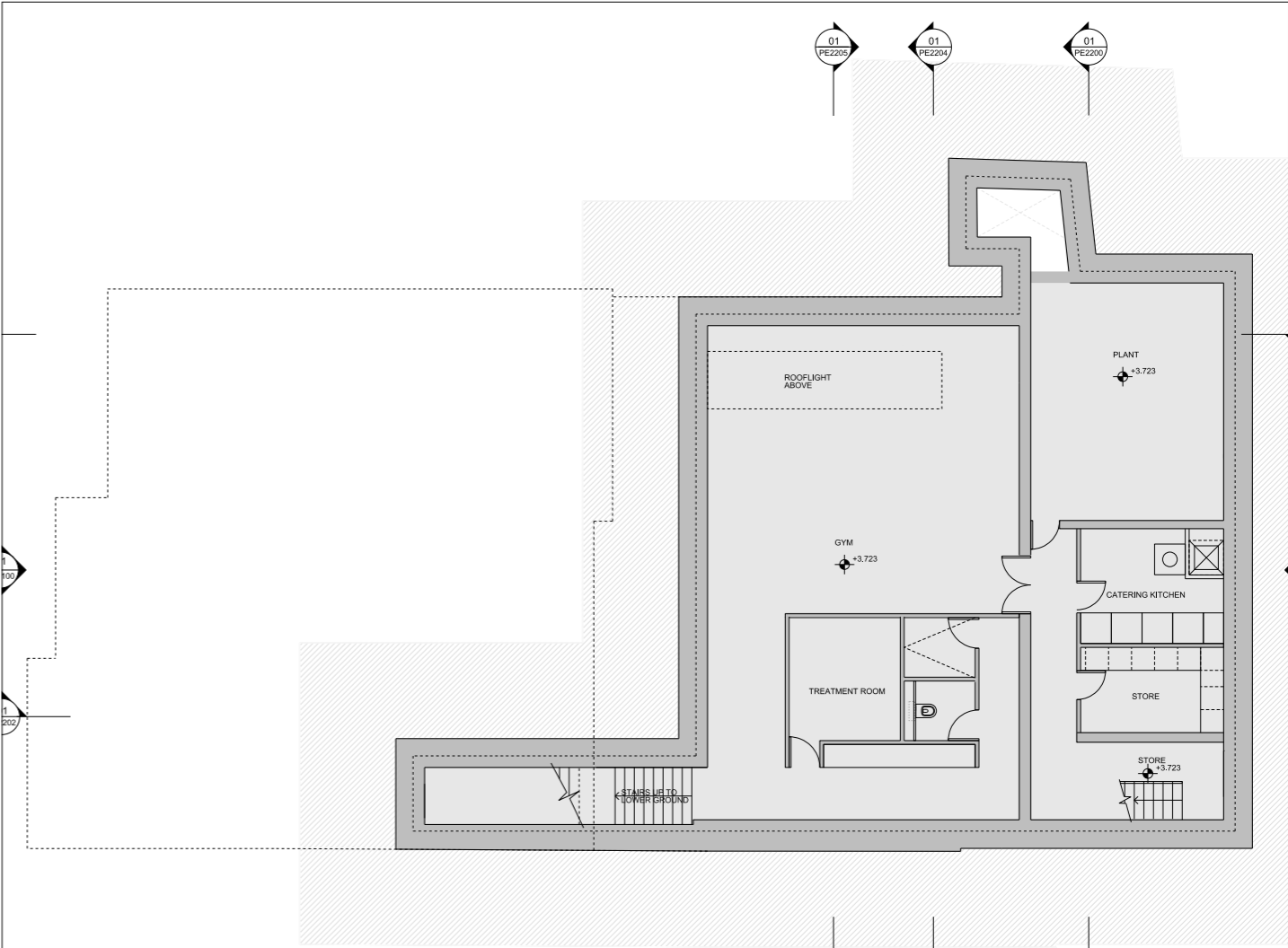


# Scale and amount

## Basement



Consented



Proposed

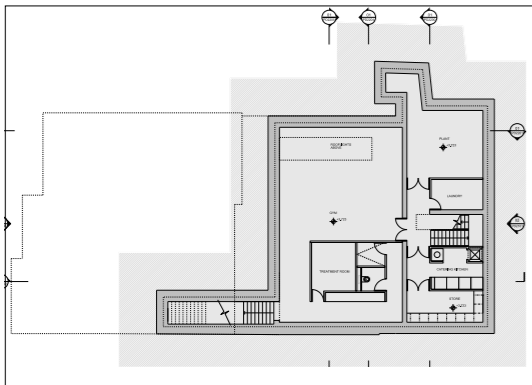
### Commentary

No changes to the extent of the basement. Layout amendments only

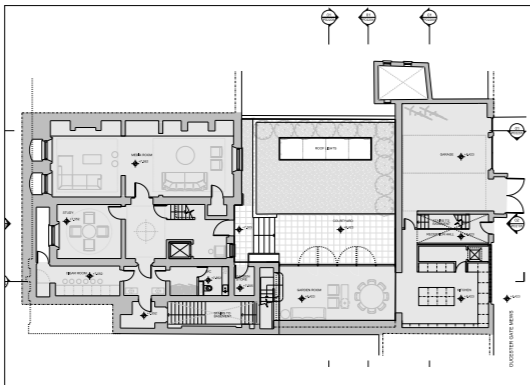
# Amount

## Area schedule

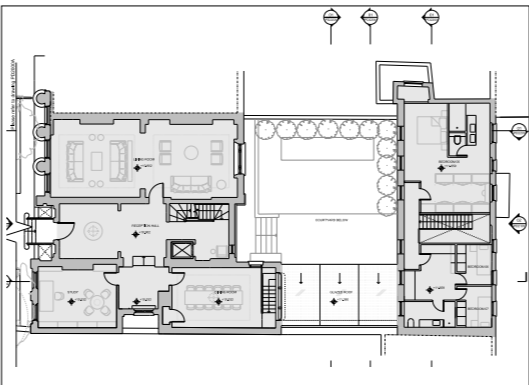
### Consented



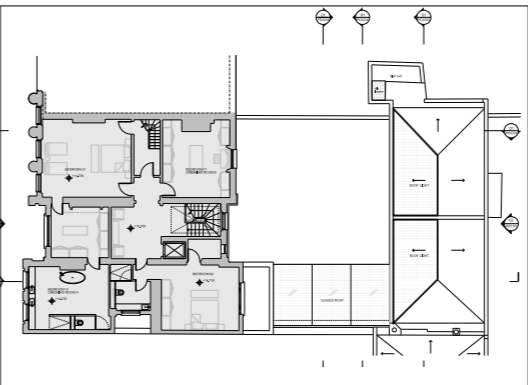
**Consented**  
Basement floor: 207m<sup>2</sup>/2,228ft<sup>2</sup>



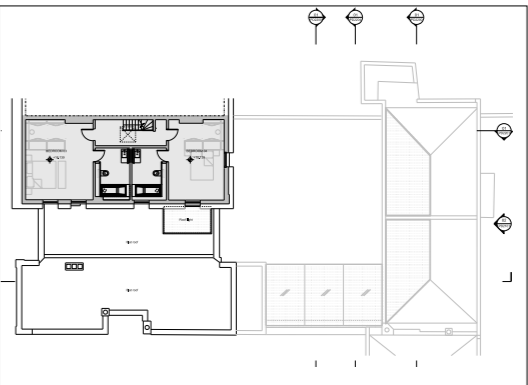
**Consented**  
Lower ground floor: 265m<sup>2</sup>/2,850ft<sup>2</sup>



**Consented**  
Ground floor: 245m<sup>2</sup>/2,637ft<sup>2</sup>

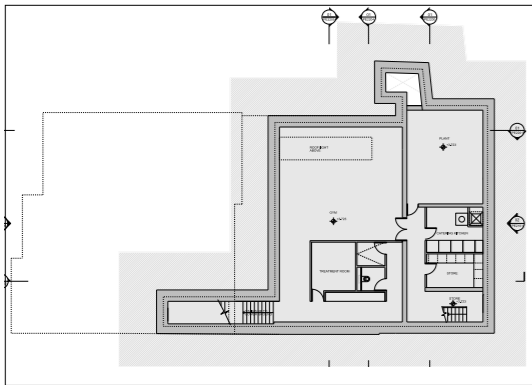


**Consented**  
First floor: 152m<sup>2</sup>/1,636ft<sup>2</sup>

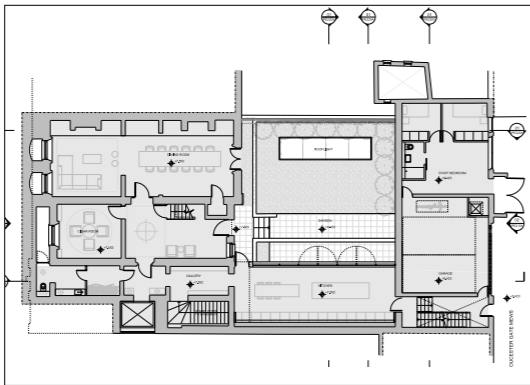


**Consented**  
Second floor: 64m<sup>2</sup>/1,636ft<sup>2</sup>

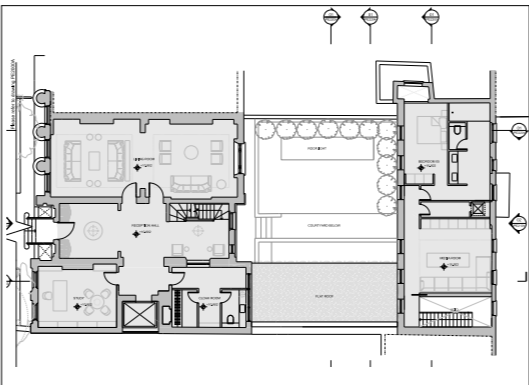
### Proposed



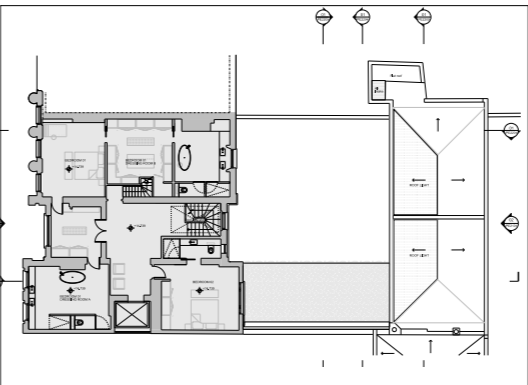
**Proposed**  
Basement floor: 207m<sup>2</sup>/2,228ft<sup>2</sup>



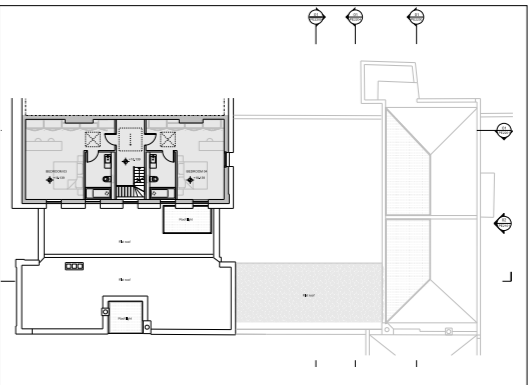
**Proposed**  
Lower ground floor: 272m<sup>2</sup>/2,928ft<sup>2</sup>



**Proposed**  
Ground floor: 242m<sup>2</sup>/2,605ft<sup>2</sup>



**Proposed**  
First floor: 157m<sup>2</sup>/1,690ft<sup>2</sup>



**Proposed**  
Second floor: 64m<sup>2</sup>/1,636ft<sup>2</sup>

Existing Gross Internal Area  
933m<sup>2</sup>/10,043 ft<sup>2</sup>

Proposed Gross Internal Area  
942m<sup>2</sup>/10,140 ft<sup>2</sup>

Total floor area uplift from consented scheme  
9m<sup>2</sup>/97ft<sup>2</sup>

**make**

Make  
32 Cleveland Street  
London W1T 4JY

T +44(0)20 7636 5151  
[info@makearchitects.com](mailto:info@makearchitects.com)  
[www.makearchitects.com](http://www.makearchitects.com)

