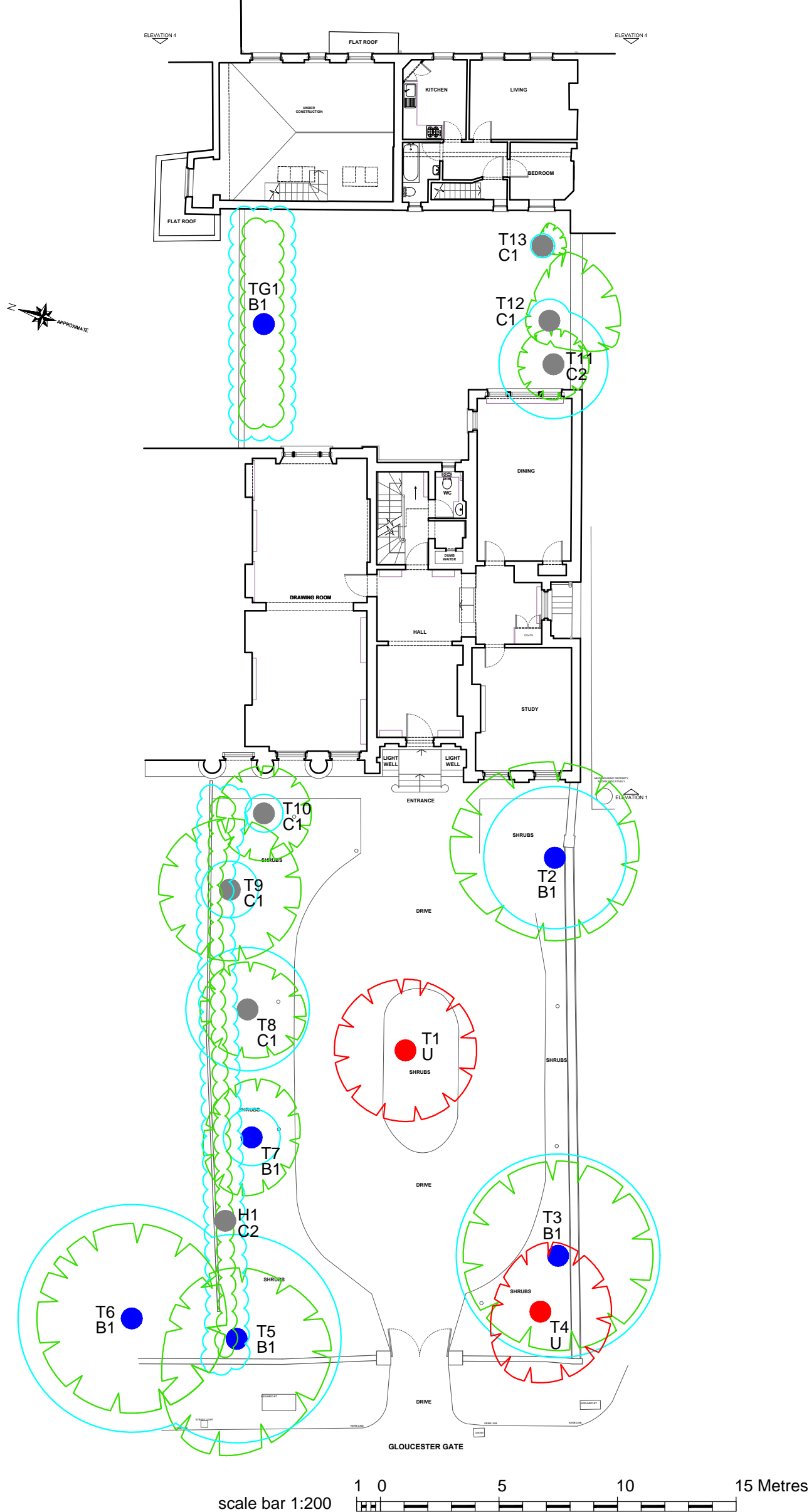
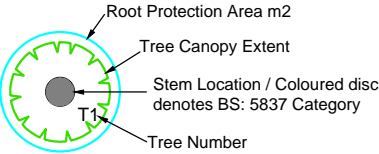


Tree No	Species	DBH(m)	No of Stems	Ht (m)	BS Cat
T1	Weeping Ash.	0.65	1	8.7	U
T2	Magnolia.	0.25	1	7.6	B1
T3	Ash.	0.36	1	12	B1
T4	Cherry.	0.27	2	4.7	U
T5	False Acacia.	0.37	1	10.4	B1
T6	Oak.	0.4	1	13.7	B1
T7	Japanese Maple.	0.12	M/s	4	B1
T8	Pittosporum	0.26	2	5.5	C1
T9	Lilac.	0.12	M/s	4.6	C1
T10	Cotoneaster.	0.067	1	4	C1
T11	Rhododendron.	0.19	1	8.2	C2
T12	Lilac.	0.09	M/s	3.6	C1
T13	Japanese Maple.	0.04	1	3.4	C1
H1	Yew.	0.08	M/s	3.5	C2
TG1	Hornbeam.	0.19	1	4.5	B1



COPYRIGHT RESERVED
DO NOT SCALE FROM THIS DRAWING

Tree Survey Drawing Key



See Innovation Environmental Tree Survey for Individual Tree Details

KEY

Refer to Innovation Environmental arboricultural report for details

- Category A - high quality and value
- Category B - moderate quality and value
- Category C - low quality and value
- Category U - removal

RPA - root protection area as defined by Table 2 BS 5837:2012

Category U - removal



Environmental Services

Unit 4, Linnet Court,
Cawledge Business Park
Alnwick NE66 2GD

T: +44 (0) 330 380 1036
F: +44 (0) 330 380 1038
E: office@innovation-environmental.co.uk
W: www.innovation-environmental.co.uk

REV AMENDMENTS DRAWN DATE AUTHD

PROJECT
Gloucester Lodge,
Gloucester Gate, Regents
Park, London, NW1 4HA

CLIENT
Iconic Properties Limited

TITLE
Tree Constraint Plan (TCP)

Job D1006151635	Scale 1:200 @ A3	DRG NO 11896	Revision -
Date 28/07/2015	Type MT.TCP.11896.v1		

Innovation Group