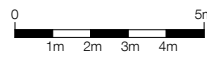


1 Existing Section E E
1 : 100



UCL LAWS Bentham House

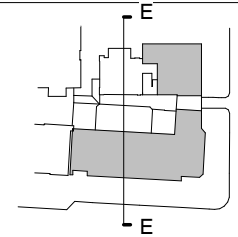
standard notes

1. Do not scale this drawing.
2. All dimensions must be checked on site and any discrepancies verified with the architect.
3. Unless shown otherwise, all dimensions are to structural surfaces.

THIS IS NOT A CONSTRUCTION DRAWING. IT IS UNSUITABLE FOR THE PURPOSE OF CONSTRUCTION AND MUST ON NO ACCOUNT BE USED AS SUCH.

drawing notes

DESIGN INTENT: These are design intent drawings and do not show full construction information. The Contractor must develop the details, without changing the visual, spatial or other performances, to provide a fully developed scheme including all concealed components such as wind posts, vapour barriers and cavity barriers. All dimensions on this drawing are taken to finished surfaces unless specifically indicated on the dimensions itself.



revisions	date	description
P1	14.03.14	Issued for Costing
P2	02.05.14	Stage D Issue
P3	01.08.14	Planning and LBC Issue
P4	29.10.14	Stage D Adm. Issue
P5	27.02.15	Issued for Pre-Tender Estimate
T1	25.03.15	Issued for Tender
P6	01.11.16	Draft planning/LBC issue
P7	05.06.17	Draft planning/LBC Issue
P8	30.06.17	Planning / LBC issue

date	client		
30.06.17	UCL		
scale	drawing		
As indicated	Existing Section EE		
drawn	checked	drawing number	rev
JM	JM	3000 - L - 154	P8

Levitt Bernstein
1 Kingsland Passage
London
E8 2BB

t: 020 7275 7676
f: 020 7275 9348
w: levittbernstein.co.uk
e: post@levittbernstein.co.uk

Levitt Bernstein

C:\Revit Local\3000_UCL LAWS_CENTRAL_Jonathan.Mann.rvt