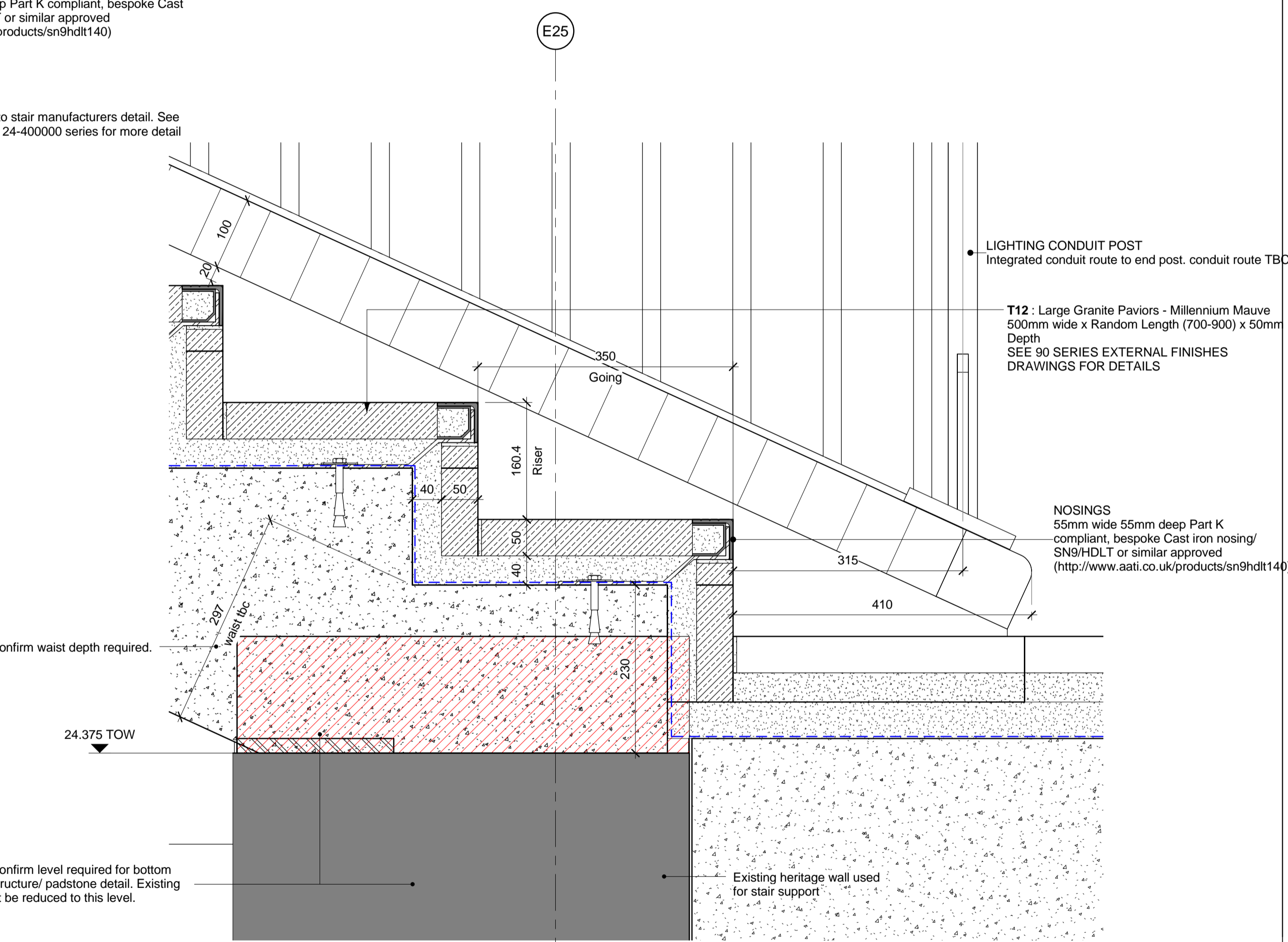
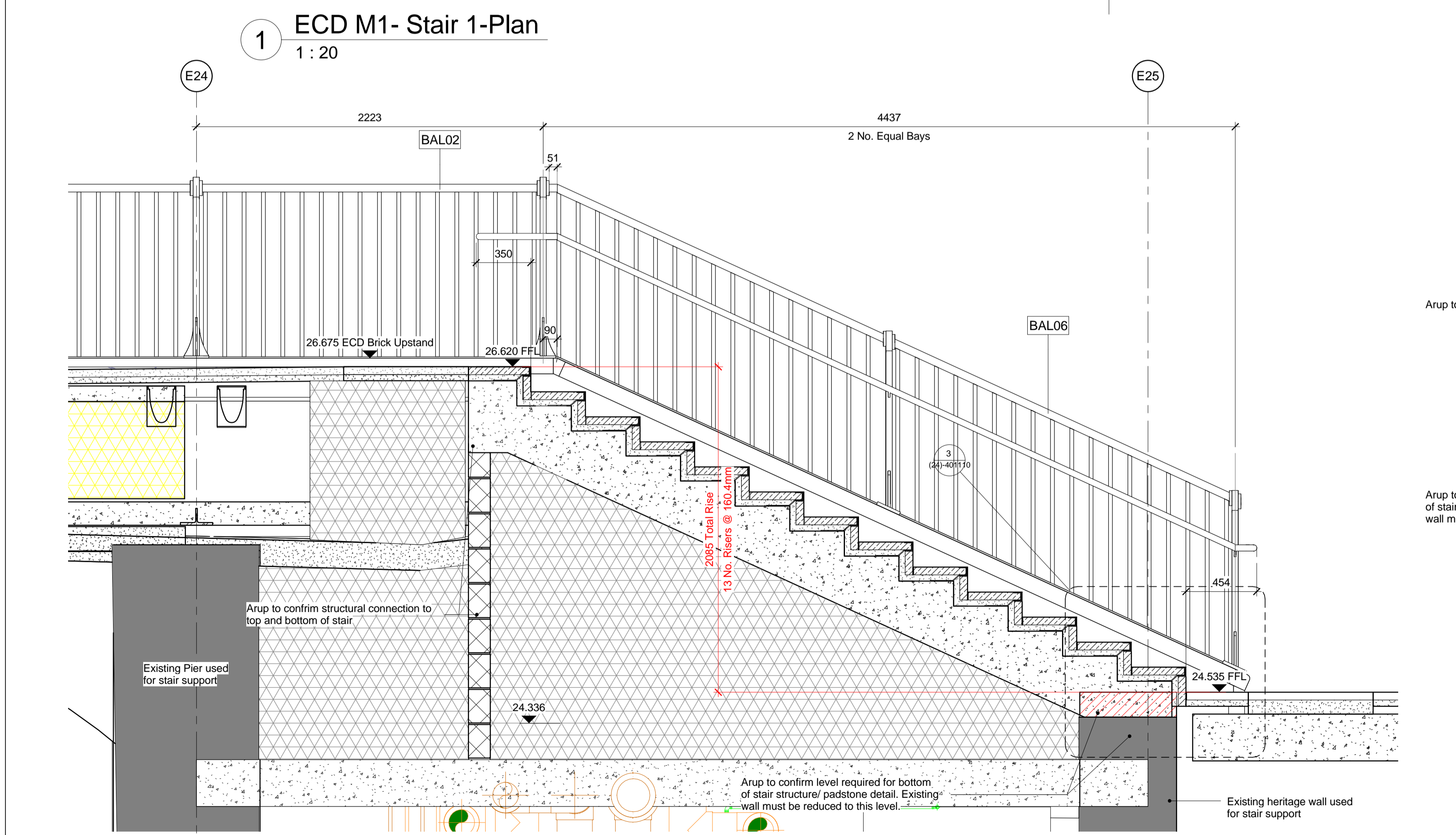
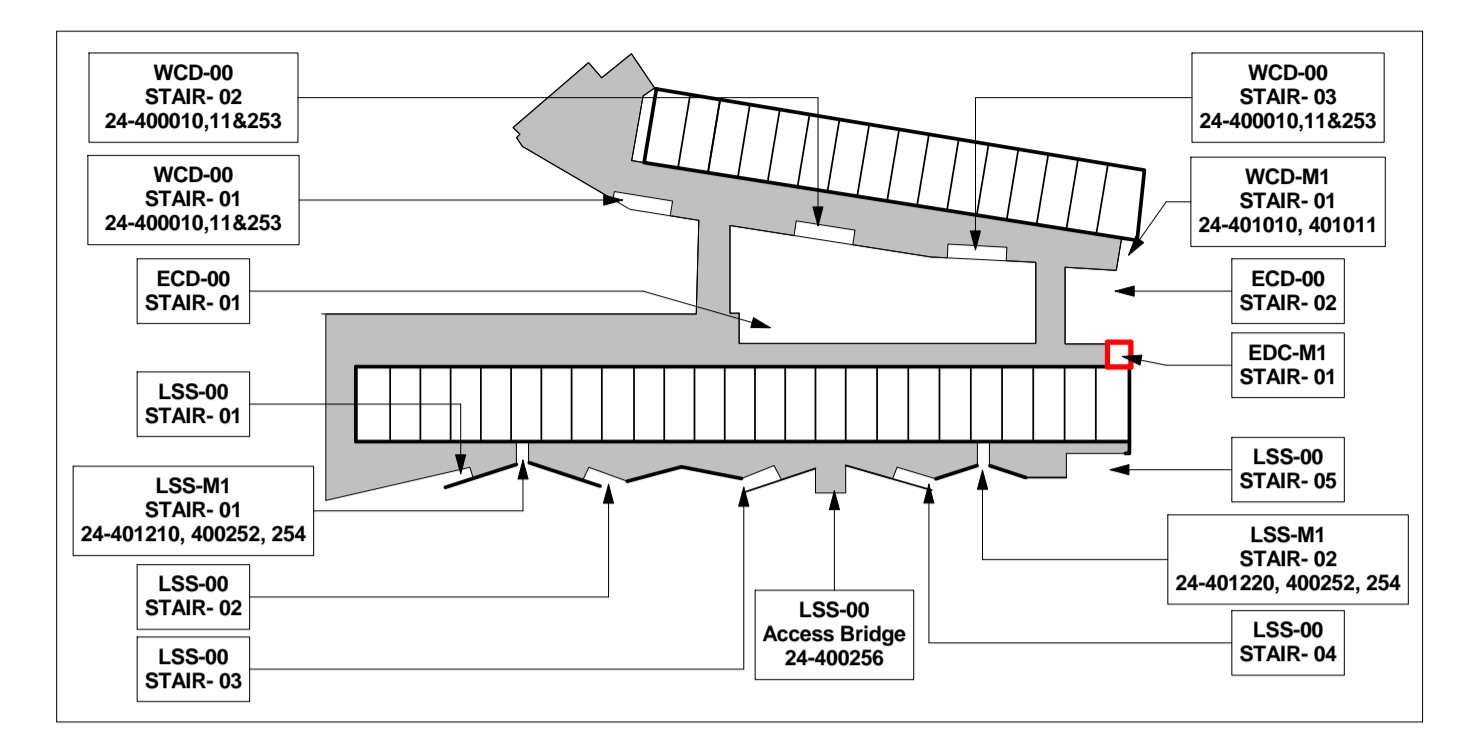
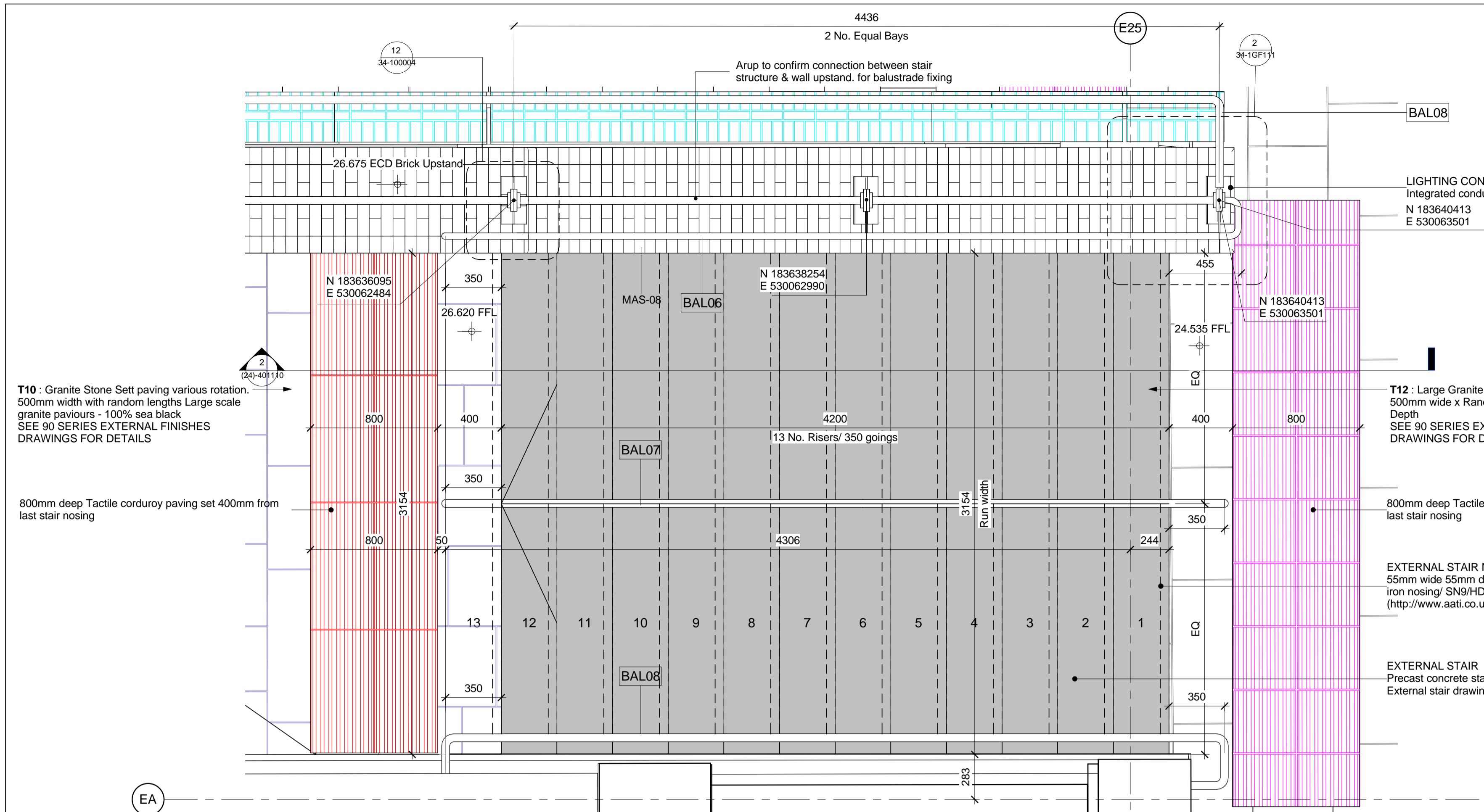


DO NOT SCALE FROM THIS DRAWING.
 ALL DIMENSIONS TO BE CHECKED ON SITE.
 FOR REFERENCED VIEWS REFER TO SERIES OF DRAWINGS KXC-M2-001-A-

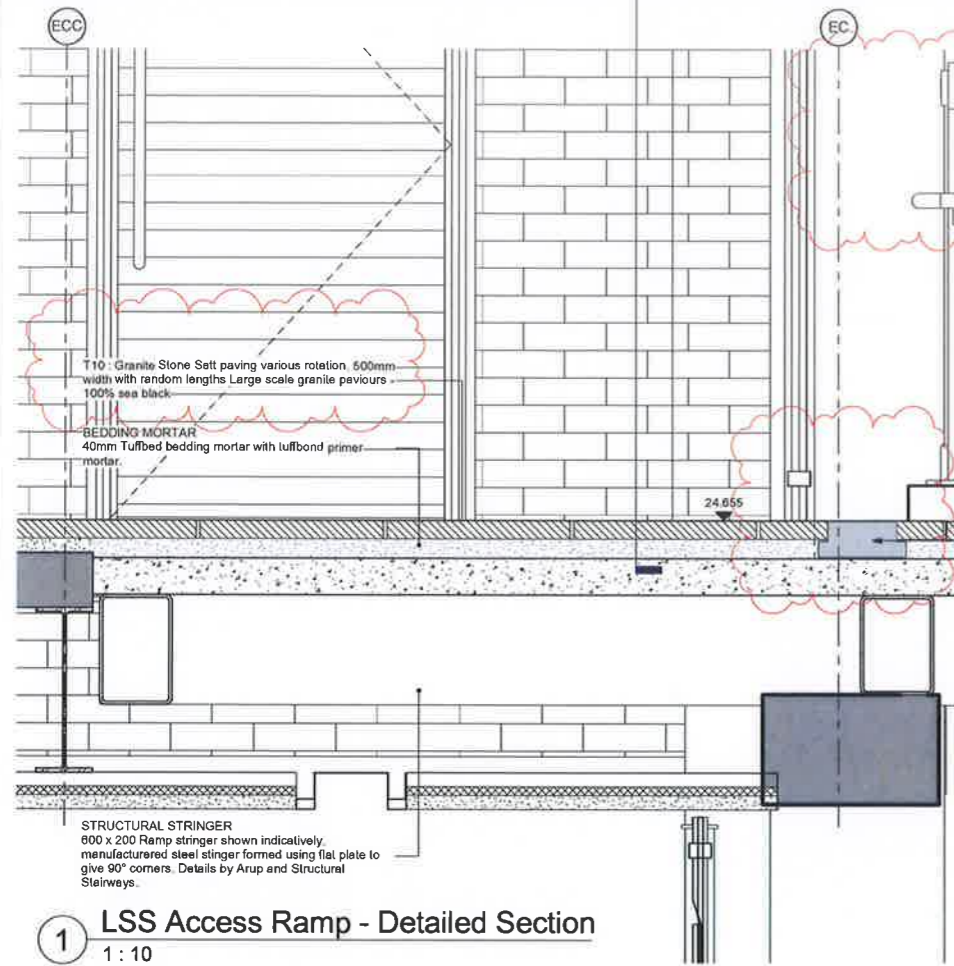


bam
 BAM Design Ltd
 An operating company of
 BAM Construct UK Ltd
 Architecture
 Interior Design
 3D Visualisation
 Feasibility Studies
 Structural Engineering
 Environmental Services
 Building Information Modelling

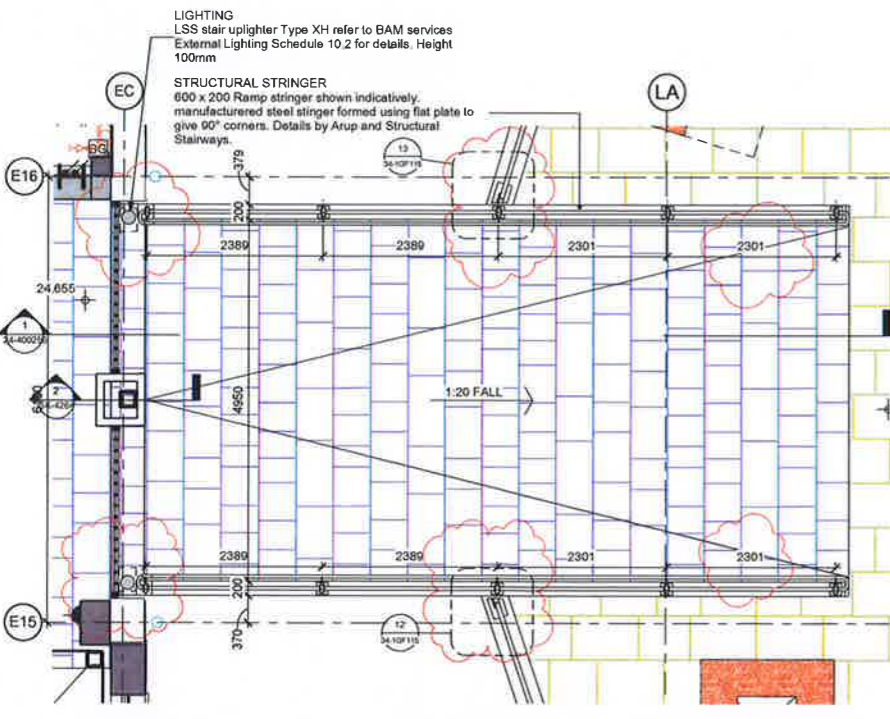
Centrium Business Park
 Griffiths Way, St Albans
 Hemel Hempstead, AL1 2RD
 01727 84200
 design@bam.co.uk
 www.bam.co.uk

Work in progress

project	COAL DROPS YARD		
title	ECD-M1 -Stair 01		
scale	As indicated @ A1	draw	BC
date	17/05/17	checked	DW
site	plification project	Consultant	Risk
design/doc ref	KXC-M2- 001-BD4389-A-(24)-401110	Contract	001
purpose of issue	INFORMATION		
BAM job no.	BAM job no.	draw	BC
draw	BC	check	DW
check	DW	date	17/05/17
date	17/05/17	no	S2
no	S2	rev	001

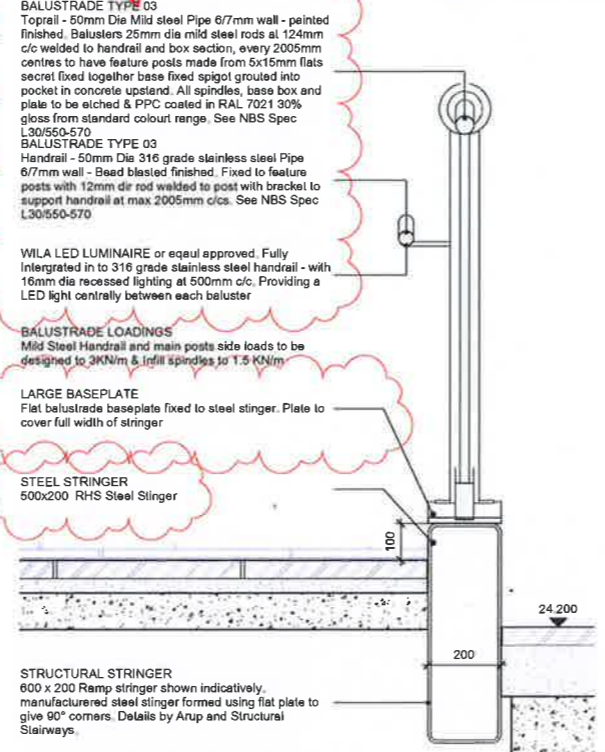


1 LSS Access Ramp - Detailed Section
1 : 10

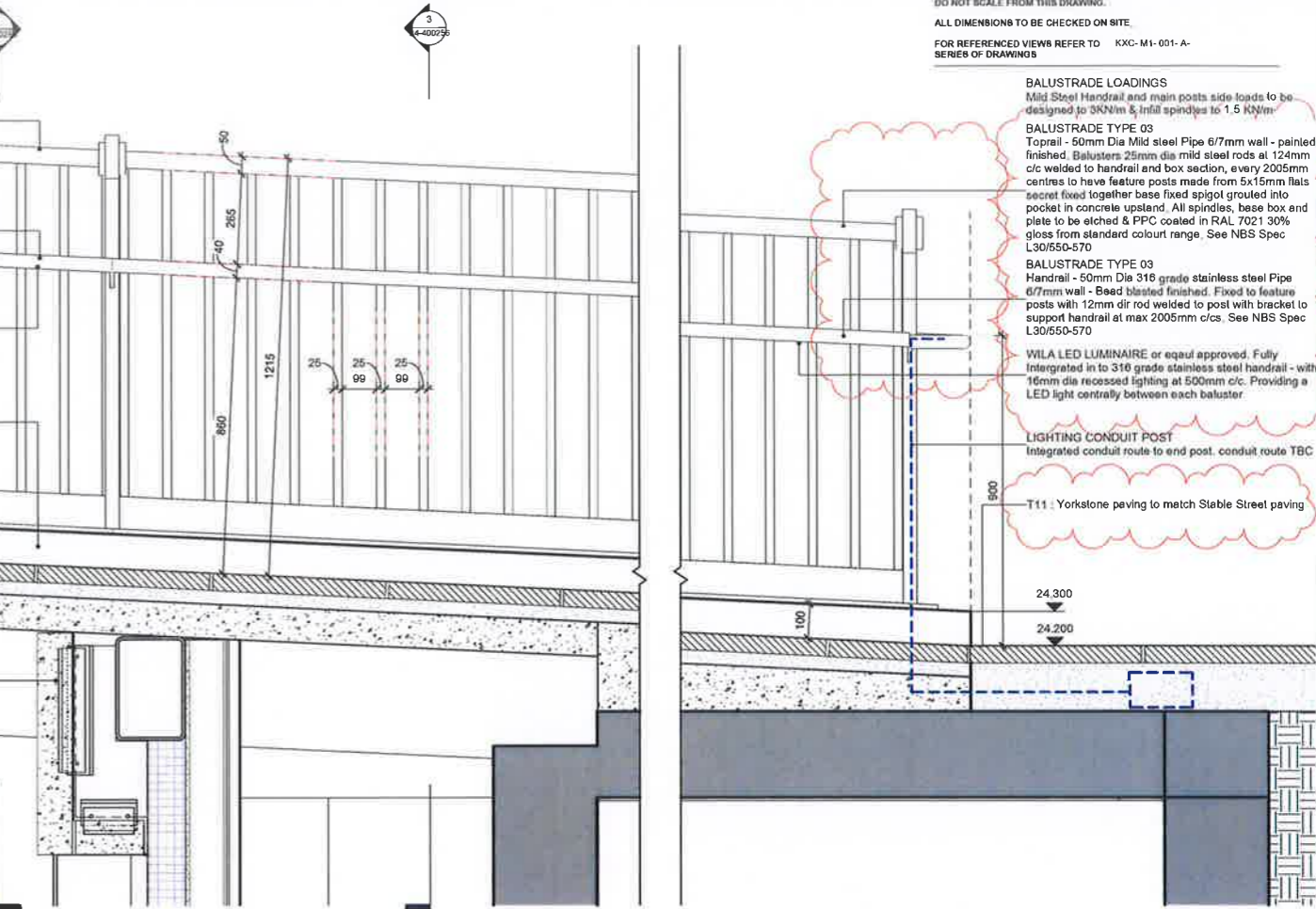


2 LSS Access Ramp - M1 MEZZANINE LEVEL
1 : 50

Note: this will be as BALOS (with wide baseplate) not BALO3



3 Handrail Section
1 : 10



4 Edge beam infill
1 : 20

005	VH	DW	06/06/17	Steel stringer note amended
004	VH	DW	05/06/17	updated to eul comments 16.05.17
003	AM	DW	06/06/17	Ramp stringer position amended. Handrail updated
002	LAW	DW	11/11/16	Updated details size, bridge width to comments.



bam
BAM Design Ltd
An operating subsidiary of
BAM Construct UK Ltd
Architect
Interior Design
3D Visualisation
Feasibility Studies
Structural Engineering
Environmental Services
Building Information Modelling

Centrum Business Park
Cottree Way, St Albans
Herts SG8 4JH
01727 864000
design@bam.co.uk
www.bam.co.uk

project COAL DROPS YARD

title LSS - Access Bridge

purpose of issue CONSTRUCTION

scale As indicated @ A1
date 05/05/17
checked DW
drawn AM
date 05/05/17
checked DW
drawn AM

sheet 4389
of 4389

revision 005

DO NOT SCALE FROM THIS DRAWING.

ALL DIMENSIONS TO BE CHECKED ON SITE.

FOR REFERENCED VIEWS REFER TO SERIES OF DRAWINGS

NOTES

- Handrail and main posts side loads to be designed to 3KN/m
- Infill spindles to be designed to 1.5 KN/m
- Stairs and associated balustrades to comply with Part K and M of the Approved Building Regulations; BS539; BS EN1991; BS6180 & BS8300
- Mid rails to be included for all the stairs wider than 1600mm
- Design and installation of all handrails to be done ensuring that the handrails do not project more than 100mm into the stairway.
- Depth of waist and landings to be confirmed by specialist sub-contractor. Depth of the Stringer may varies from 250mm to 575mm- please refer to details for specific Stringer heights. 150mm deep Composite Tray landings indicated.
- Stair Goings to be more 280 mm and varie for each stair; Risers to be 166 mm (unless otherwise stated in the drawing) with 25mm projected nosings. refer to floor finishes schedule for contrasting nosing.
- Additional hand rails need to be fixed to the main balustrade as shown in details.
- Handrail heights - 900mm (Stair flight)
- Flight Guarding heights - 1100mm to 1250mm (Stair flights and Landings/Balconies)
- General Guarding heights - 1250 to walkways
- Handrail surface is to be of a material which is slip resistant and does not get excessively cold or hot to touch.

NOTES

- Design intent shown in drawings.
- Handrail and main posts side loads to be designed to 3KN/m
- Infill spindles to be designed to 1.5 KN/m
- Stairs and associated balustrades to comply with Part K and M of the Approved Building Regulations; BS539; BS EN1991; BS6180 & BS8300
- Mid rails to be included for all the stairs wider than 1600mm
- Design and installation of all handrails to be done ensuring that the handrails do not project more than 100mm into the stairway.
- Depth of waist and landings to be confirmed by specialist sub-contractor. Depth of the Stringer may varies from 250mm to 575mm- please refer to details for specific Stringer heights. 150mm deep Composite Tray landings indicated.
- Stair Goings to be more 280 mm and varie for each stair; Risers to be 166 mm (unless otherwise stated in the drawing) with 25mm projected nosings. refer to floor finishes schedule for contrasting nosing.
- Additional hand rails need to be fixed to the main balustrade as shown in details.
- Handrail heights - 900mm (Stair flight)
- Flight Guarding heights - 1100mm to 1250mm (Stair flights and Landings/Balconies)
- General Guarding heights - 1250 to walkways
- Handrail surface is to be of a material which is slip resistant and does not get excessively cold or hot to touch.
- Design intent shown in drawings.

BALUSTRADE TYPE 01
 Top rail - 50mm Dia Mild steel Pipe 6/7mm wall - PPC with painted finish. Balusters 25mm dia mild steel rod spindles at 124mm c/c welded to handrail and box section. Feature newel posts , spindles, base box and plate to be etched & PPC coated in RAL 7021 from standard colour range 30% gloss. See NBS Spec L30/550-570

BALUSTRADE TYPE 07
 Handrail - 50mm Dia 316 grade Stainless steel Pipe 6/7mm wall - Bead blasted finished. Fixed to 40mm dia posts welded to brackets at max 2005mm c/cs. See NBS Spec L30/550-570

BALUSTRADE TYPE 08
 Handrail - 50mm Dia 316 grade Mild steel Pipe 6/7mm wall - Bead blasted finished. Fixed to wall with 12mm dia rod & square fixing plate @ max 2100 c/cs. Handrail connections to be mitred. See NBS Spec L30/550-570

BALUSTRADE TYPE 05
 Top rail - 50mm Dia Mild steel Pipe 6/7mm wall - PPC with painted finish. Stainless steel handrail with integrated LED lighting. Balusters 25mm dia mild steel rod spindles at 124mm c/c or as indicated in detailed sections welded to metal stair stringer. Feature newel posts with base plate fixed to string, spindles, base box and plate to be etched & PPC coated in RAL 7021 30% gloss. See NBS Spec L30/550-570

305x610 cranked Stringer to match WCD viaduct edge beam

M1 MEZZANINE LEVEL +24.535 m

Plate to be added to match edge beam

1 Cross Section - WCD- M1- Stair 1
 1 : 10

no	by	date	description	
003	VH	JC	19/06/17	Stair extended & balustrades revised. updated to suit comments 13.04.17
002	VH	DGW	03/04/17	Stair & balustrades revised. cranked beam added.
001	PD	MWB	18/12/15	Balustrades revised.



bam
 An operating company of BAM Construct UK Ltd
 Architecture
 Interior Design
 3D Visualisation
 Feasibility Studies
 Structural Engineering
 Environmental Services
 Building Information Modelling
 Centrium Business Park
 Griffiths Way, St Albans
 Hemel Hempstead, AL1 2RD
 01727 894200
 design@bam.co.uk
 www.bam.co.uk

project COAL DROPS YARD

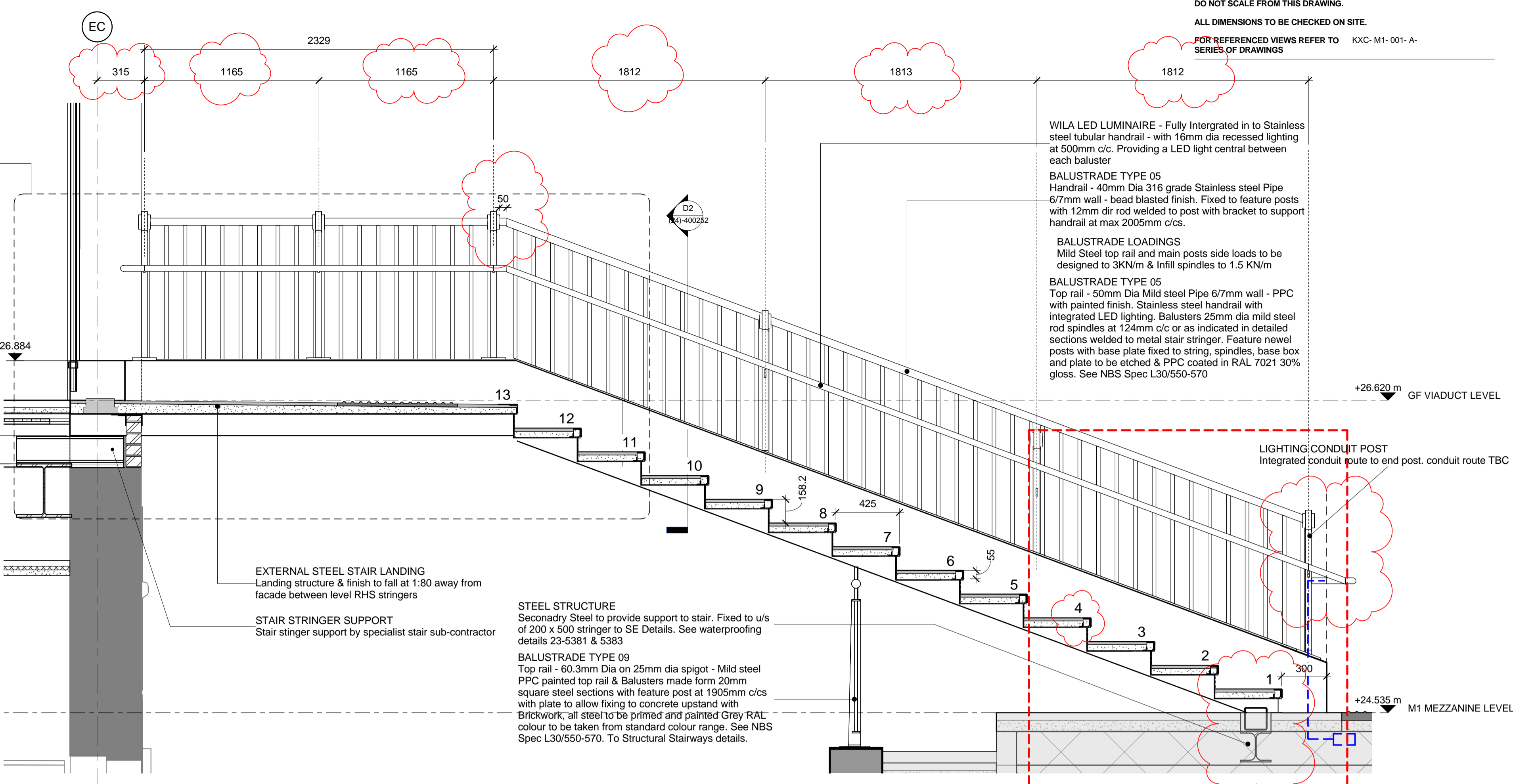
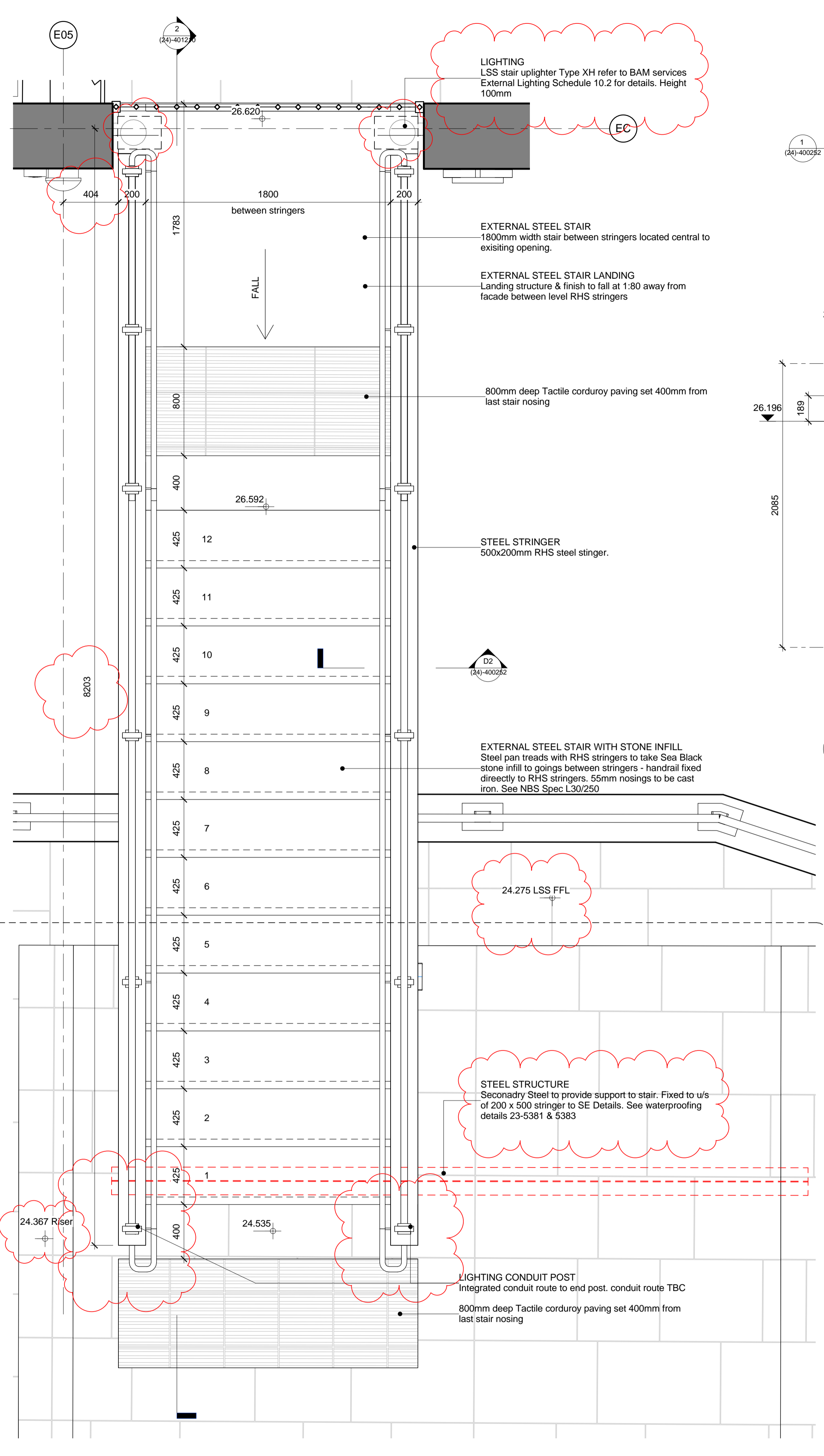
WCD-M1 Stair 01- Details

purpose of issue

CONSTRUCTION

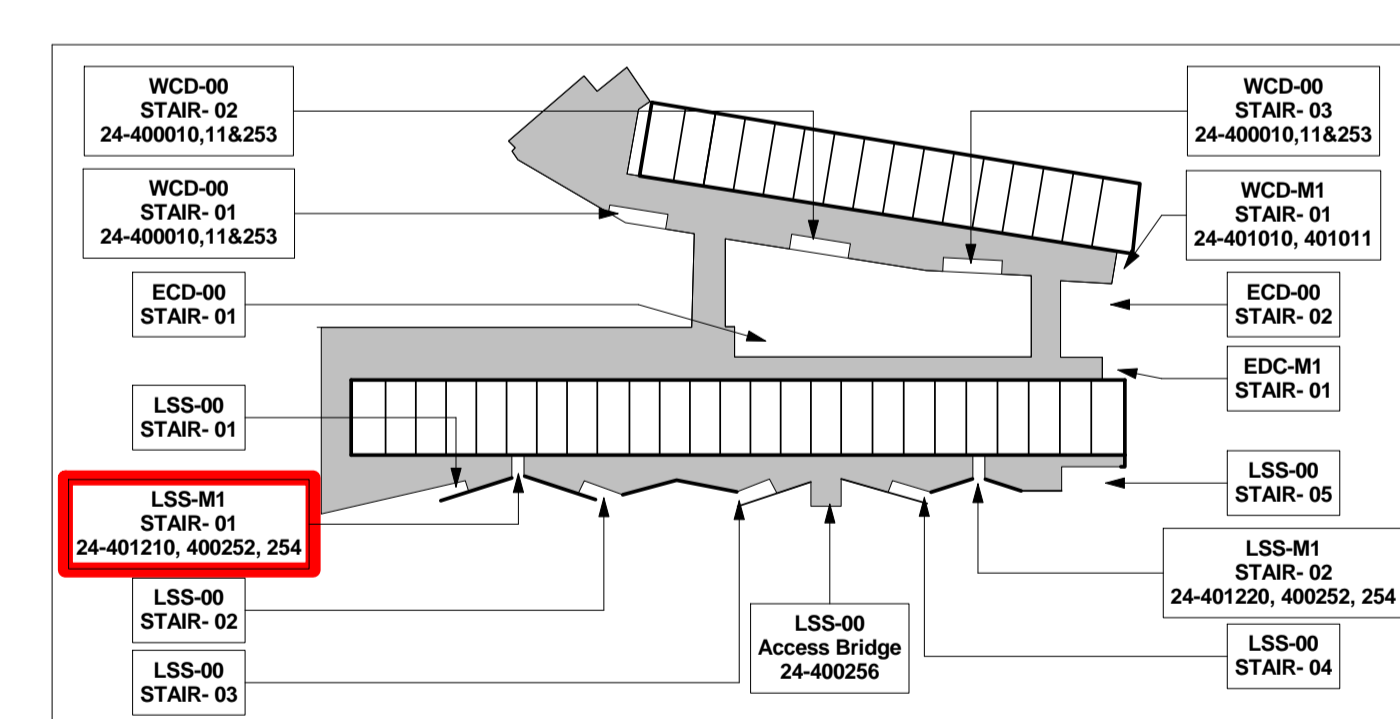
scale	drawn	BAM job no.	dig. status
As indicated @ A1	TU		
date	checked	4389	S4
11/20/15	MWB		
sig	identification project	Consultant	Role
01727 894200			
design@bam.co.uk			
www.bam.co.uk			
003			

DO NOT SCALE FROM THIS DRAWING.
 ALL DIMENSIONS TO BE CHECKED ON SITE.
 FOR REFERENCED VIEWS REFER TO SERIES OF DRAWINGS KXC-M1-001-A-



2 Section 01 - LSS- M1- Stair 1
 1 : 20

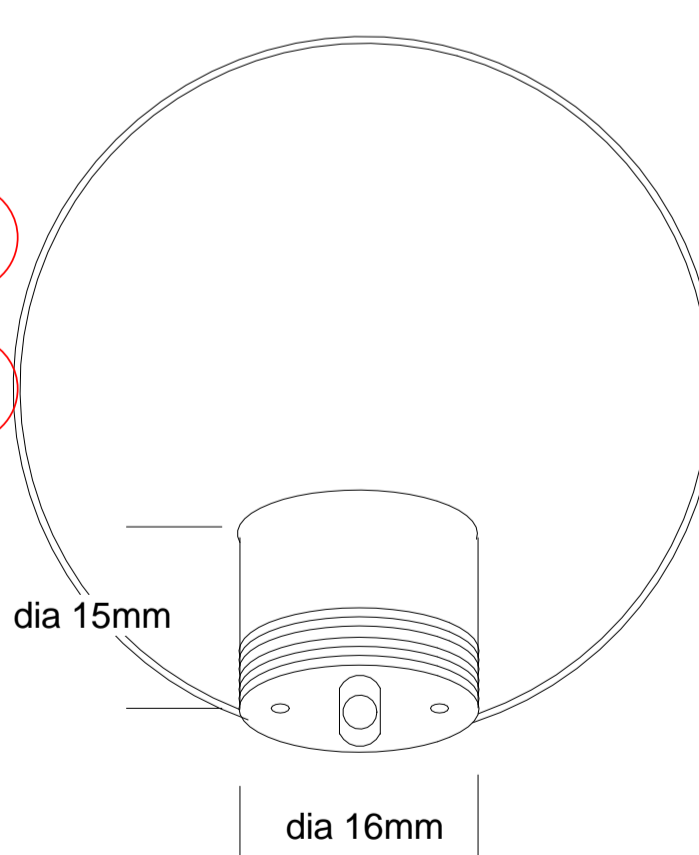
1 LM1 Mezzanine Level - LSS- M1- Stair 1
 1 : 20



Stair (External) Keyplan

FIRE PROTECTION NOTE:
 MAIN STRUCTURE IN INTUMESCENT RAL 7021 AS NBS M61/128

- NOTES**
- Handrail and main posts side loads to be designed to 3KN/m
 - Infill spindles to be designed to 1.5 KN/m
 - Stairs and associated balustrades to comply with Part K and M of the Approved Building Regulations; BS539; BS EN1991; BS6180 & BS8300
 - Mid rails to be included for all the stairs wider than 1800mm
 - Design and installation of all handrails to be done ensuring that the handrails do not project more than 100mm into the stairway.
 - Depth of waist and landings to be confirmed by specialist sub-contractor. Depth of the Stringer may vary from 250mm to 575mm- please refer to details for specific Stringer heights. 150mm deep Composite Tray landings indicated.
 - Stair Goings to be more 280 mm and varie for each stair; Risers to be 166 mm (unless otherwise stated in the drawing) with 25mm projected nosings. refer to floor finishes schedule for contrasting nosing.
 - Additional hand rails need to be fixed to the main balustrade as shown in details.
 - Handrail heights - 900mm (Stair flight)
 - Flight Guarding heights - 1100mm to 1250mm (Stair flights and Landings/Balconies)
 - General Guarding heights - 1250 to walkways
 - Handrail surface is to be of a material which is slip resistant and does not get excessively cold or hot to touch.
 - All PPC steel & stainless steel elements to be RAL colour 7021 (taken from the standard colour range 30% gloss finish).
 - Top rails to be painted mild steel PPC. Secondary handrail tubular 316 grade stainless steel with beam blasted finish.



Integrated LED Lighting to be fixed flush into stainless steel handrail at 500 c/cs

no	by	chkd	date	description
007	VH	DGW	06/06/17	Nosing detail, steel support note amended, setting out to grid added.
006	VH	DGW	05/06/17	Updated to suit comments 16.05.17
005	VH	DGW	24/03/17	Stair re-modelled to sit over BAL09. Goings reduced to 425

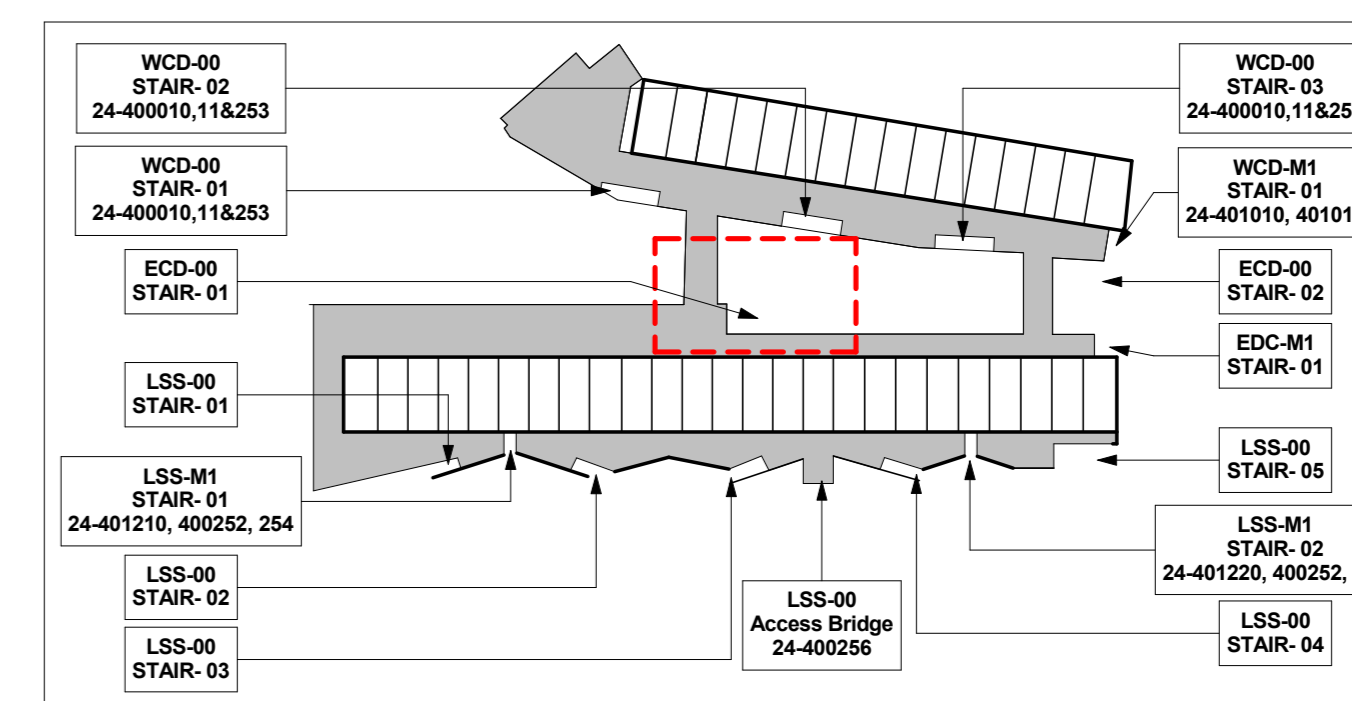


bam
 BAM Design Ltd
 An operating company of BAM Construct UK Ltd
 Architecture
 Interior Design
 3D Visualisation
 Feasibility Studies
 Structural Engineering
 Environmental Services
 Building Information Modelling

project COAL DROPS YARD
 title LSS-M1 - Stair 01 - External Stair
 purpose of issue Construction
 scale As indicated @ A1
 date 11/13/15
 checked MWB
 design 4389
 S4
 KXC-M1- 001-BD4389-A-(24)-401210 007

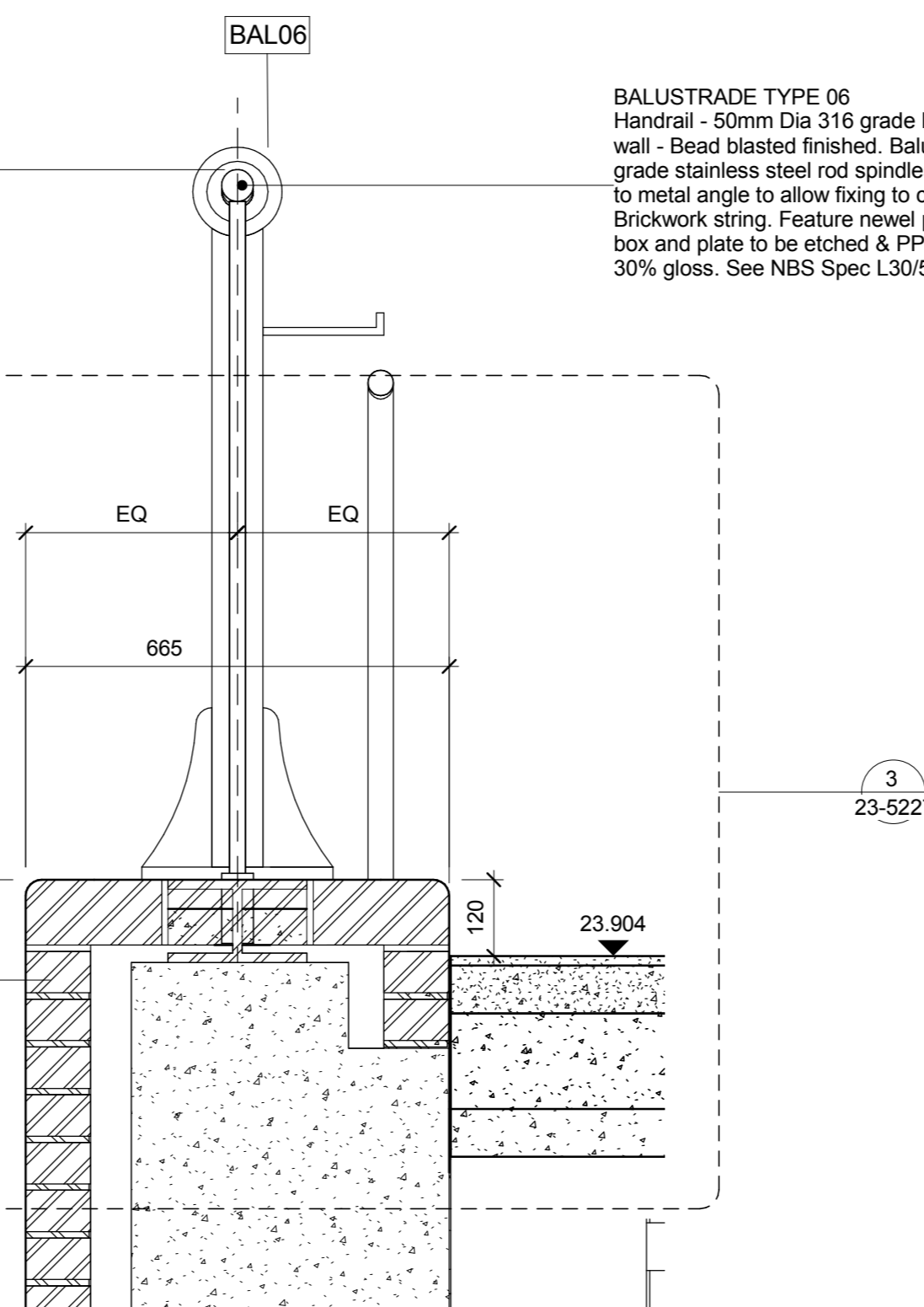
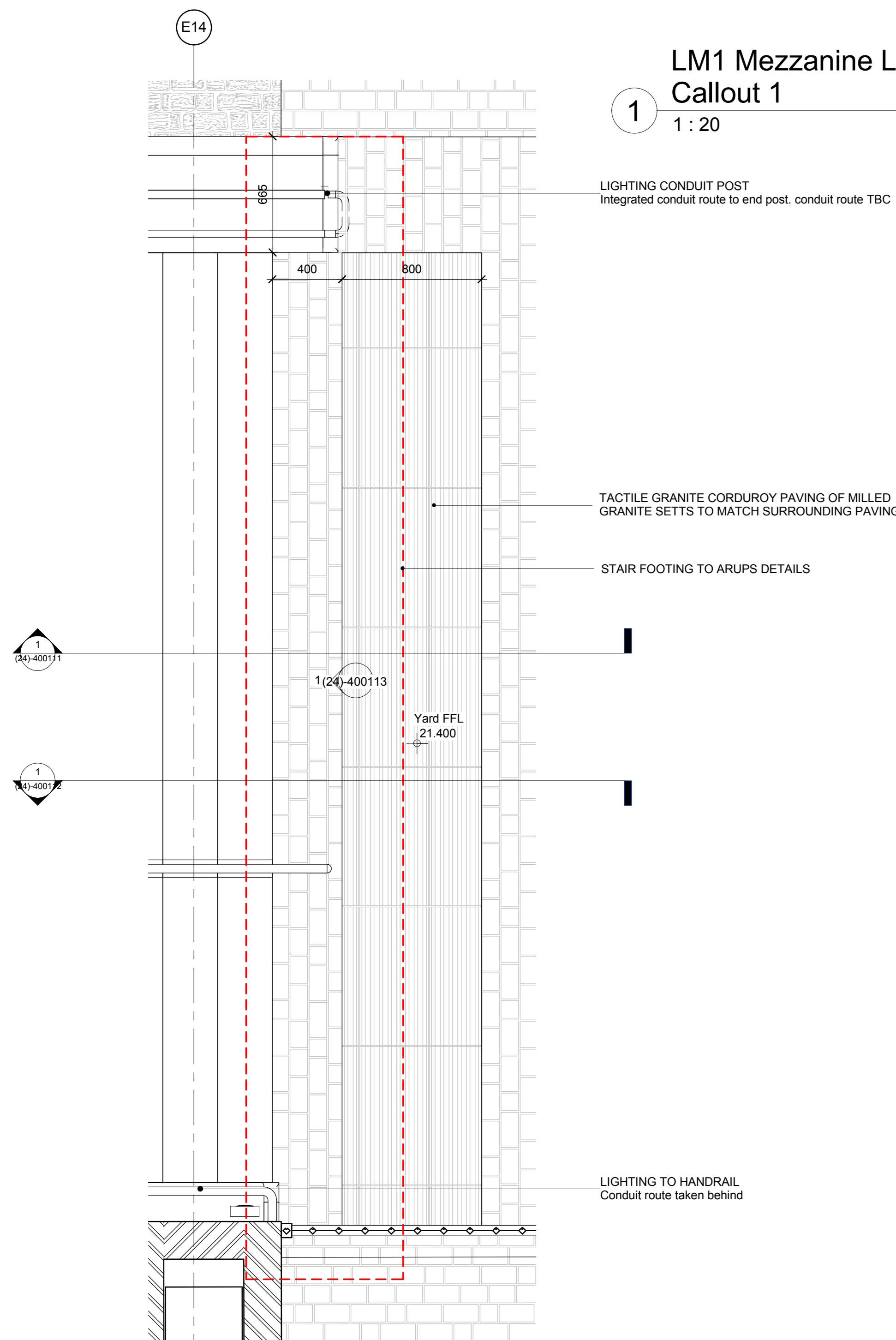
GENERAL NOTES:

- All Stainless steel to be 316 grade. All fixings are to be by specialist sub-contractor to provide the side loadings of 3kN/m for handrails, posts, infill spindles to 1.5kN/m.
- Top Rail to be painted PPC mild steel. Secondary Handrails to be tubular 316 grade stainless steel with bead blasted finish.
- Stair and balustrade design and fixings to be by specialist sub-contractor to comply with required loadings, copy of calculations are required to be submitted to BCO.
- Staircases to be design to prevent reverberation or bounce when in use.
- Sub contractor to provide adequate protection / separation between different metal types to prevent electrolysis or bimetallic action taking place.



STAIR (EXTERNAL) KEYPLAN

LM1 Mezzanine Level - ECD- 00- Stair 1 - Callout 1
 1 : 20

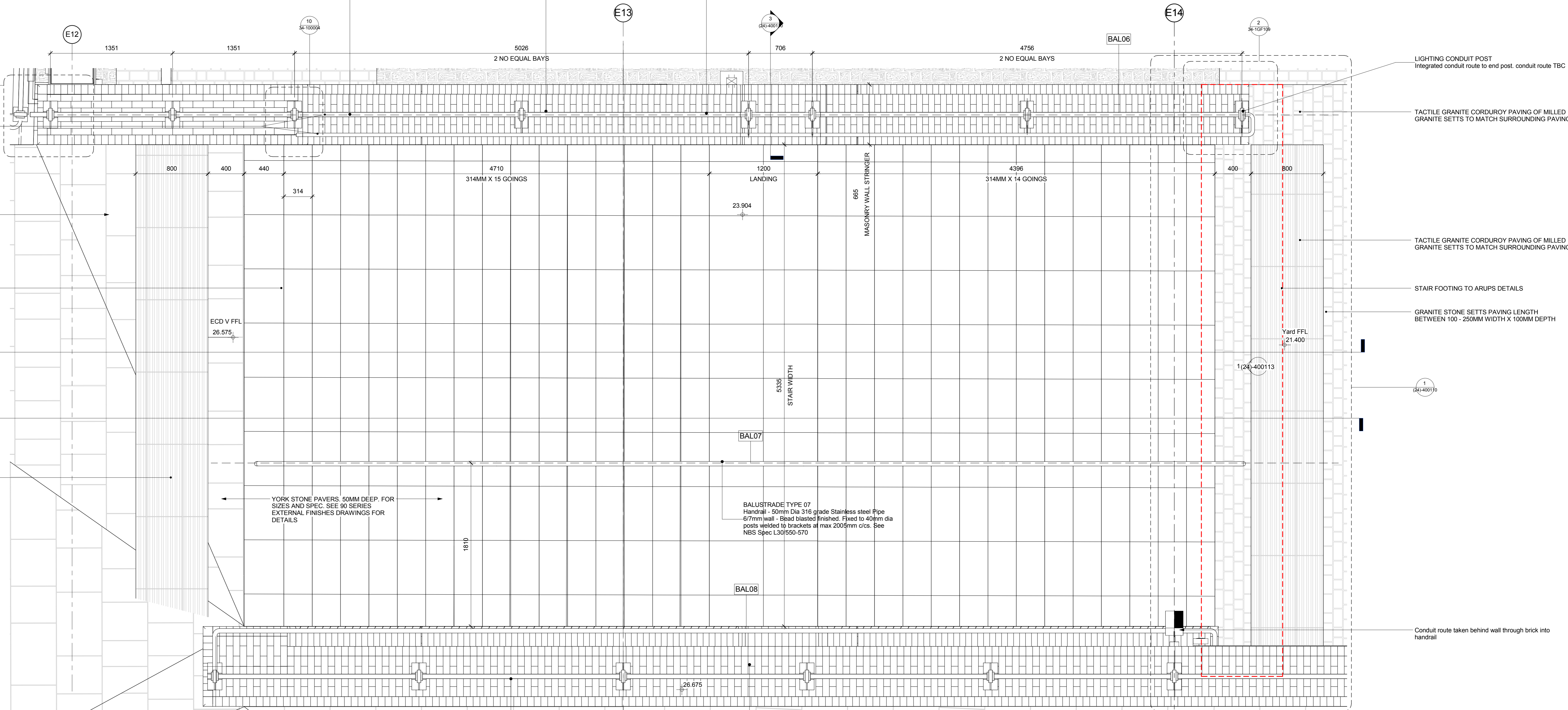


Balustrade Detail
 1 : 10

BALUSTRADE TYPE 06
 Handrail - 50mm Dia 316 grade Mild steel Pipe 6/7mm wall - Bead blasted finished. Balusters 25mm dia 316 grade stainless steel rod spindles at 124mm c/c welded to metal angle to allow fixing to concrete stair with Brickwork string. Feature rivet posts, spindles, base box and plate to be etched & PPC coated in RAL 7021 30% gloss. See NBS Spec L30/550-570

On handrail to stairs - WILA LED LUMINAIRE - Fully integrated in to Stainless steel Tubular 50mm Dia handrail - with 16mm dia recessed lighting at 500mm c/c. Providing a LED light centrally between each baluster

BALUSTRADE LOADINGS
 Mild Steel top rail and main posts side loads to be designed to 3kN/m & infill spindles to 1.5 kN/m



LM1 Mezzanine Level - ECD- 00- Stair 1
 2 : 20

BALUSTRADE TYPE 09
 Top rail - 60.3mm Dia or 25mm dia spigot - Mild steel PPC painted top rail & Balusters made form 20mm square steel sections with feature post. See LSS setting out drawings. Plate to allow fixing to concrete upstand, all steel to be primed and painted Grey RAL 7021. See NBS Spec L30/550-570. To Structural Stairways details.

BALUSTRADE TYPE 08
 Handrail - 50mm Dia 316 grade stainless steel Pipe 6/7mm wall - Bead blasted finished. Fixed to wall with 12mm dia rod & square fixing plate @ max 2100 c/c. Handrail connections to be mitred. See NBS Spec L30/550-570

- NOTES**
- Handrail and main posts side loads to be designed to 30kN
 - Infill spindles to be designed to 1.5 kN/m
 - Stairs and associated balustrades to comply with Part K and M of the Approved Building Regulations: 2010/10, BS EN191, BS EN101 & BS1303
 - Mid rails to be included for all the stairs wider than 1500mm
 - Design and installation of all handrails to be done ensuring that the handrails do not project more than 100mm into the stairway
 - Depth of walls and landings to be confirmed by specialist sub-contractor. Depth of the Stringer may vary from 200mm to 275mm please refer to details for specific Stringer heights. 150mm deep Composite Tray landings indicated.
 - Stair Goings to be more 285 mm and vary for each stair. Risers to be 166 mm (unless otherwise stated in the drawings) with 25mm projected nosings, refer to floor finishes schedule for contrasting nosing.
 - Additional hand rails need to be fixed to the main balustrade as shown in detail.
 - Handrail heights - 900mm (Stair flight)
 - Flight Guarding heights - 1100mm to 1250mm (Stair flights and Landings/Balconies)
 - General Guarding heights - 1250 to walkways
 - Handrail surface is to be of a material which is slip resistant and does not get excessively cold or hot to touch.

- NOTES**
- Design intent shown in drawings.
 - Handrail and main posts side loads to be designed to 30kN
 - Infill spindles to be designed to 1.5 kN/m
 - Stairs and associated balustrades to comply with Part K and M of the Approved Building Regulations: 2010/10, BS EN191, BS EN101 & BS1303
 - Mid rails to be included for all the stairs wider than 1500mm
 - Design and installation of all handrails to be done ensuring that the handrails do not project more than 100mm into the stairway
 - Depth of walls and landings to be confirmed by specialist sub-contractor. Depth of the Stringer may vary from 200mm to 275mm please refer to details for specific Stringer heights. 150mm deep Composite Tray landings indicated.
 - Stair Goings to be more 285 mm and vary for each stair. Risers to be 166 mm (unless otherwise stated in the drawings) with 25mm projected nosings, refer to floor finishes schedule for contrasting nosing.
 - Additional hand rails need to be fixed to the main balustrade as shown in detail.
 - Handrail heights - 900mm (Stair flight)
 - Flight Guarding heights - 1100mm to 1250mm (Stair flights and Landings/Balconies)
 - General Guarding heights - 1250 to walkways
 - Handrail surface is to be of a material which is slip resistant and does not get excessively cold or hot to touch.
 - Design intent shown in drawings.

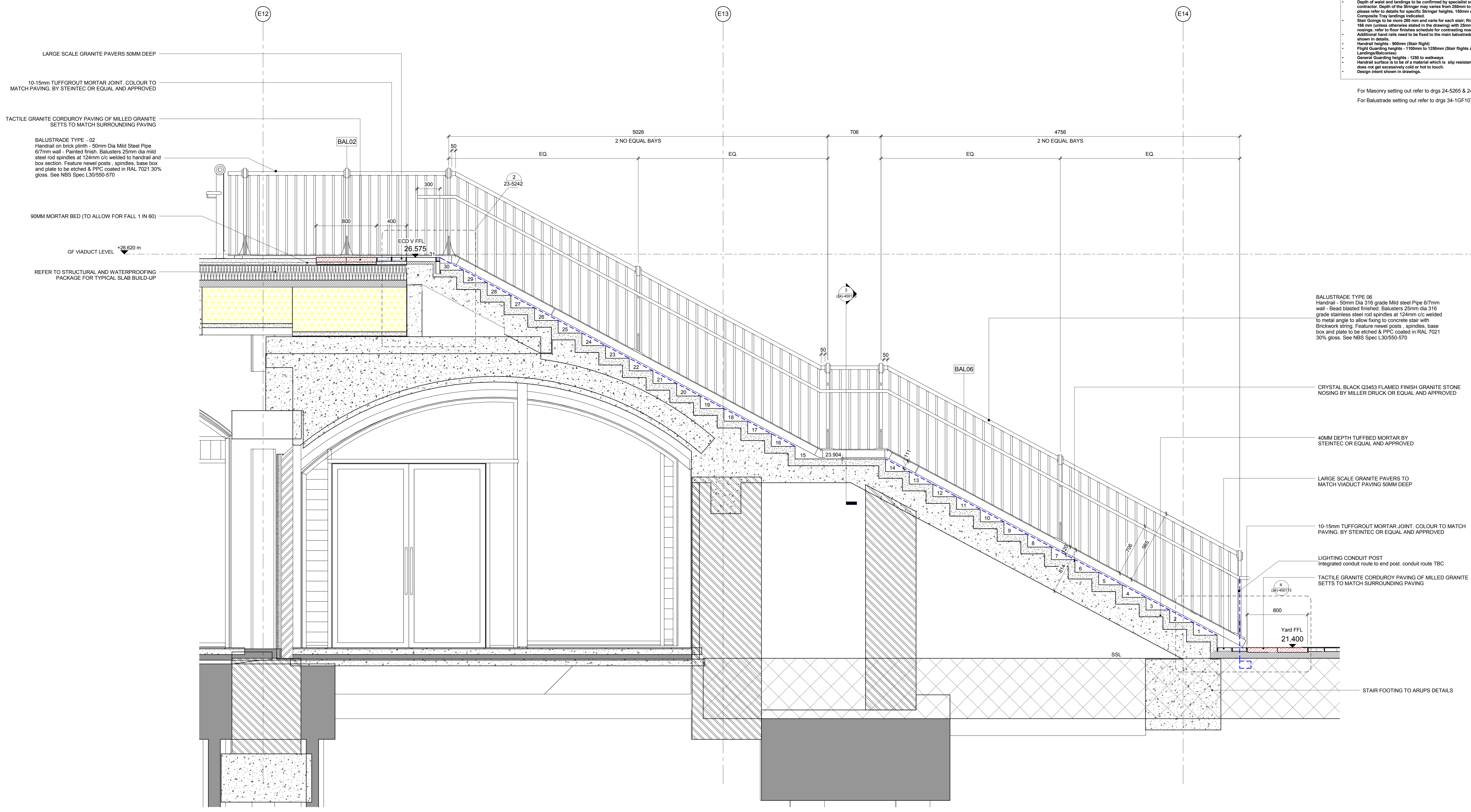
For Masonry setting out refer to drgs 24-5265 & 24-5266 - ECD Viaduct Stair Structural Co-ordination & Masonry Set Out (Section X and Section Y)
 For Balustrade setting out refer to drgs 34-1GF107 to 34-1GF111 - M2 - ECD - Viaduct Balustrade setting out drawings sheet 1-5



- NOTES**
- Handrail and main posts side tools to be designed to 30kNm
 - Infill spindles to be designed to 1.4 kN/m
 - Stairs and associated balustrades to comply with Part K, and M of the Approved Building Regulations (ABR) 2010, BS EN 1191, BS EN 13816 & BS EN 13816
 - Mild rails to be included for all the stairs wider than 1600mm
 - Design and installation of all handrails to be done ensuring that the handrails do not project more than 100mm into the stairway.
 - Depth of nosing and handings to be confirmed by specialist sub-contractor.
 - Depth of the stringer may vary from 200mm to 317mm please refer to details for specific stringer heights. 100mm deep Composite Tray stringers indicated.
 - Stair Goings to be more 280 mm and vary for each stair. Risers to be 160 mm unless otherwise stated in the drawing with 25mm projected nosings. refer to floor finishes schedule for contrasting nosing. Additional hand rails need to be fixed to the main balustrade as shown in details.
 - Handrail heights - 900mm (Stair Flight)
 - Flight Guarding heights - 1100mm to 1250mm (Stair flights and Landings/Balconies)
 - General Guarding heights - 1250 to walkways.
 - Handrail surfaces is to be of a material which is slip resistant and does not get excessively cold or hot to touch.

- NOTES**
- Design intent shown in drawings.
 - Handrail and main posts side tools to be designed to 30kNm
 - Infill spindles to be designed to 1.4 kN/m
 - Stairs and associated balustrades to comply with Part K, and M of the Approved Building Regulations (ABR) 2010, BS EN 1191, BS EN 13816 & BS EN 13816
 - Mild rails to be included for all the stairs wider than 1600mm
 - Design and installation of all handrails to be done ensuring that the handrails do not project more than 100mm into the stairway.
 - Depth of nosing and handings to be confirmed by specialist sub-contractor.
 - Depth of the stringer may vary from 200mm to 317mm please refer to details for specific stringer heights. 100mm deep Composite Tray stringers indicated.
 - Stair Goings to be more 280 mm and vary for each stair. Risers to be 160 mm unless otherwise stated in the drawing with 25mm projected nosings. refer to floor finishes schedule for contrasting nosing. Additional hand rails need to be fixed to the main balustrade as shown in details.
 - Handrail heights - 900mm (Stair Flight)
 - Flight Guarding heights - 1100mm to 1250mm (Stair flights and Landings/Balconies)
 - General Guarding heights - 1250 to walkways.
 - Handrail surfaces is to be of a material which is slip resistant and does not get excessively cold or hot to touch.
 - Design intent shown in drawings.

For Masonry setting out refer to drgs 24-5265 & 24-5266 - ECD Viaduct Stair Structural Co-ordination & Masonry Set out (Section X and Section Y)
 For Balustrade setting out refer to drgs 34-1GF107 to 34-1GF111 - M2 - ECD - Viaduct Balustrade setting out drawings sheet 1-5



1 Section 01- ECD- 00- Stair 1
 1 : 20

KEY PLAN
 Tab-select then edit family
 to add your keyplan



bam
 BAM Design
 31 Westbourne
 London W14 8PL
 Tel: +44 (0)20 8833 6000
 Fax: +44 (0)20 8833 6001
 Email: info@bamdesign.co.uk
 www.bamdesign.co.uk

PROJECT COAL DROPS YARD
 ECD-00 Stair 01 - Section 1
 As indicated @ A0
 04.12.2015
 SS
 MWB
 4389
 S4
 KXC-M2-001-BD4389-A-(24)-00111 001

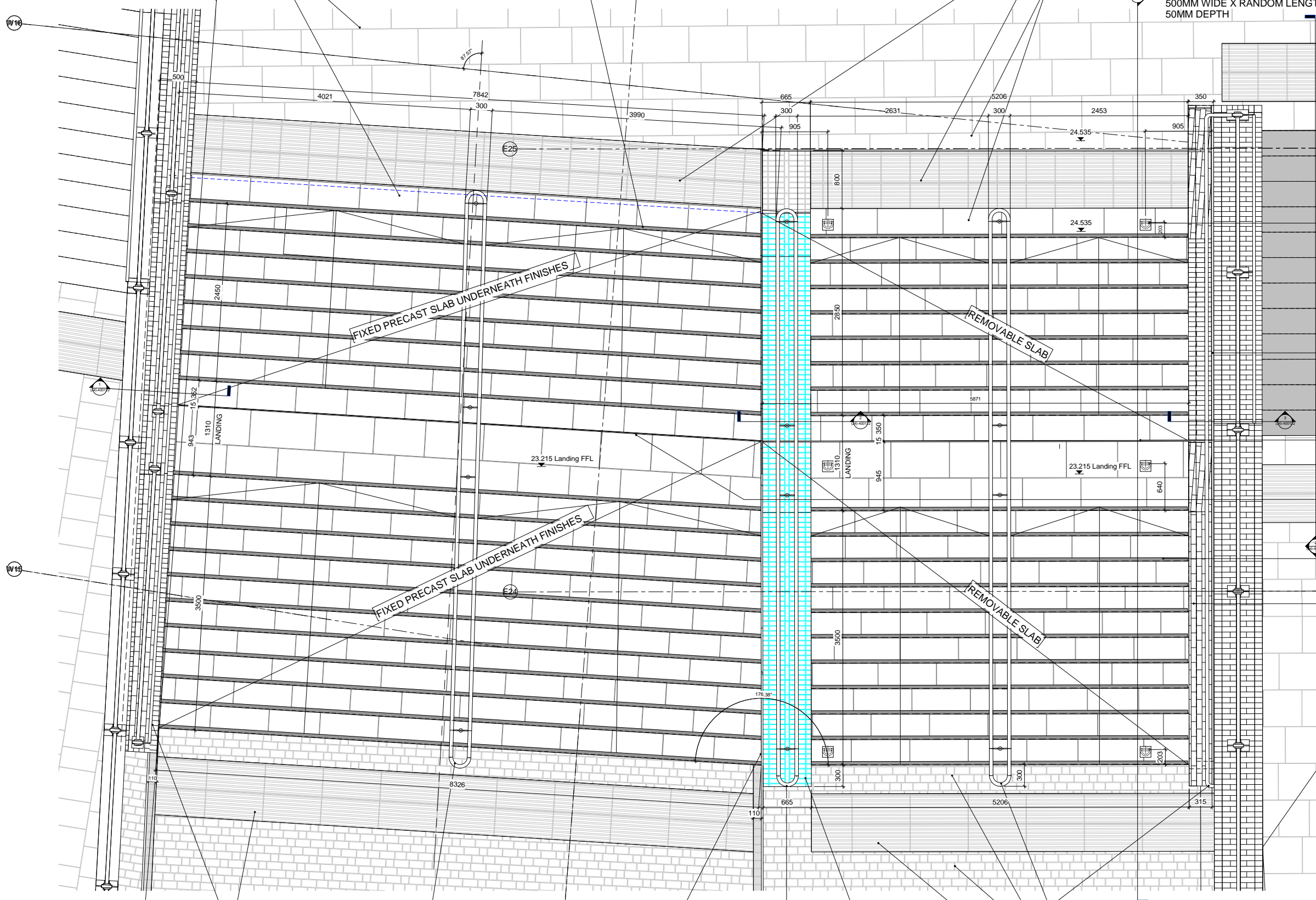
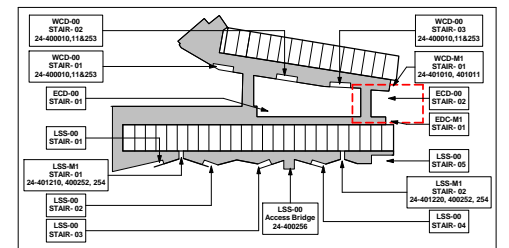
DO NOT SCALE FROM THIS DRAWING.
ALL DIMENSIONS TO BE CHECKED ON SITE.
FOR REFERENCED VIEWS REFER TO SERIES OF DRAWINGS KXC-M2-001-A-(24)

SQUARE PAVING FINISH TYPE T12 :
LARGE GRANITE PAVIORS -
MILLENNIUM MAUVE 500MM WIDE X
RANDOM LENGTH (700-900) X 50MM
DEPTH

CRYSTAL BLACK Q3453 FLAMED FINISH
GRANITE STONE NOSING BY MILLER
DRUCK OR EQUAL AND APPROVED

TACTILE GRANITE CORDUROY PAVING
OF MILLED GRANITE SETTS TO MATCH
SURROUNDING PAVING

SQUARE PAVING FINISH TYPE T12 : LARGE
GRANITE PAVIORS - MILLENNIUM MAUVE
500MM WIDE X RANDOM LENGTH (700-900) X
50MM DEPTH



LIFTING EYE CAST IN SOCKET PROTECTED
WITH DUCTILE COVER TO
SUBCONTRACTOR DESIGN

WALL ABUTMENT PROTECTED WITH
ANGLE VERSION OF TECNOKGIUNTI
JOINT PROFILE FOR FLOOR JOINTS WITH
REMOVABLE GASKET OR SIMILAR
APPROVED

TECNOKGIUNTI K FLOOR G30
EXPANSION JOINT PROFILE FOR FLOOR
JOINTS WITH REMOVABLE GASKET OR
SIMILAR APPROVED

TECNOKGIUNTI K FLOOR G30 EXPANSION
JOINT PROFILE FOR FLOOR JOINTS WITH
PERMANENTLY FITTED GASKET OR
SIMILAR APPROVED.

CRYSTAL BLACK Q3453 FLAMED FINISH
GRANITE STONE NOSING BY MILLER
DRUCK OR EQUAL AND APPROVED

BRICK PLINTH ON THE EDGE OF
PRECAST SLAB MATCHING WALL
TYPE 08, BRICK ARRANGEMENT TO BE
SAME AS ON THE TOP OF CHEEK
WALL LOCATED ON WCD SIDE

REFER TO BALUSTRADE DETAIL
DRAWINGS PACKAGE FOR
SPECIFICATIONS AND DETAILS

REFER TO BALUSTRADE DETAIL
DRAWINGS PACKAGE FOR
SPECIFICATIONS AND DETAILS

INSTALLATION GAP
FILLED IN WITH MASTIC MATCHING
STAIR FINISHES COLOUR AND BACKING
ROD IN A WAY THAT ENABLES THEIR
EASY REMOVAL WHEN NEEDED

REFER TO BALUSTRADE DETAIL
DRAWINGS PACKAGE FOR
SPECIFICATIONS AND DETAILS

DEMARICATION KERB MADE OF ENGINEERING BRICK
WIENERBERGER STAFFORDSHIRE SMOOTH BLUE
PERFORATED BRICKS 65MM X 215MM X 103MM (YARD
FINISH TYPE T6) BUILT DIRECTLY ON PRECAST SLAB
ONCE SLAB IS INSTALLED, WEIGHT OF THE KERB TO BE
INCLUDED INTO SLAB OVERALL LOADING

REFER TO BALUSTRADE DETAIL
DRAWINGS PACKAGE FOR
SPECIFICATIONS AND DETAILS

YARD FINISHES TYPE T1 TO BE GRANITE STONE
SETT PAVING VARIOUS ROTATION. LENGTHS
BETWEEN 100-250MM WIDTH X 100 DEPTH.

TACTILE GRANITE CORDUROY PAVING
OF MILLED GRANITE SETTS TO MATCH
SURROUNDING PAVING

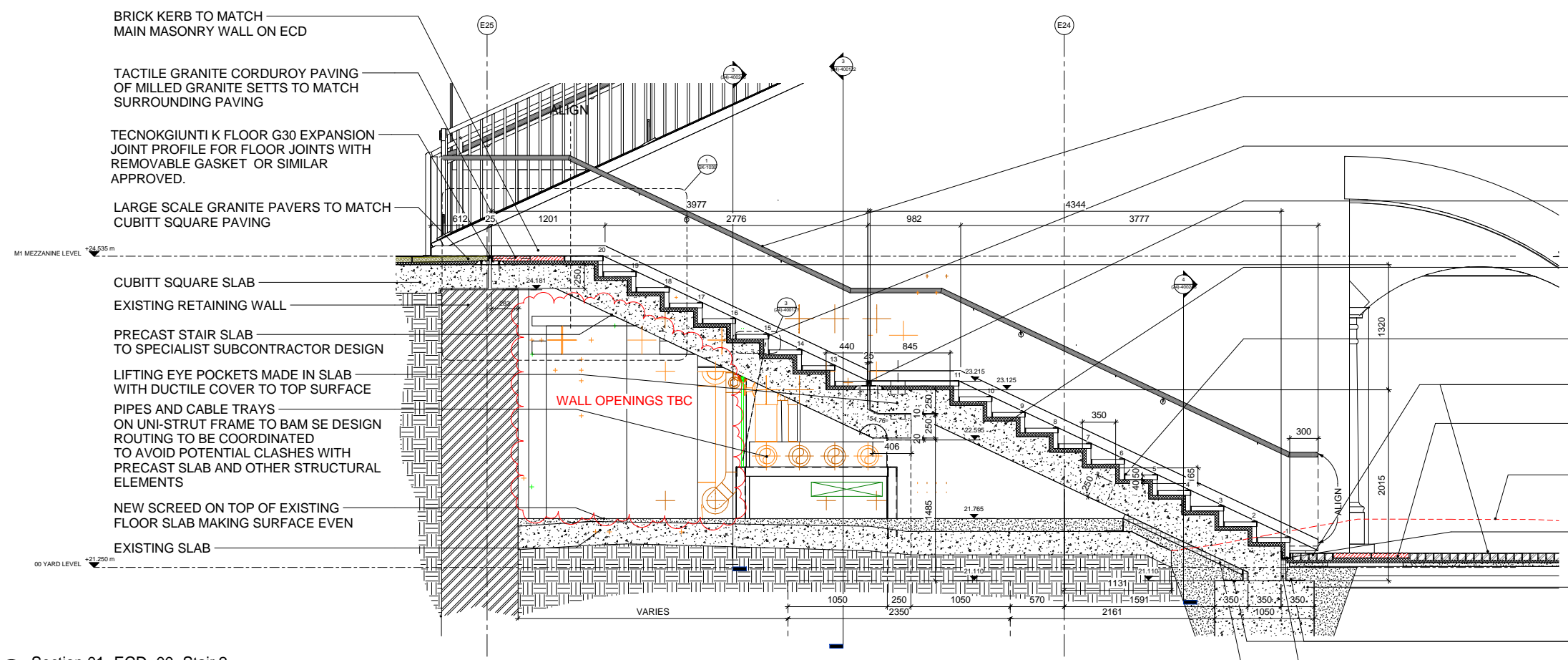
1 LM1 Mezzanine Level - ECD- 00- Stair 2
1 : 20

KEY PLAN
Tab-select then edit family
to add your keyplan



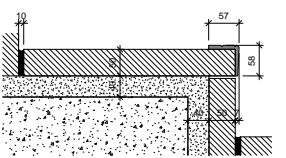
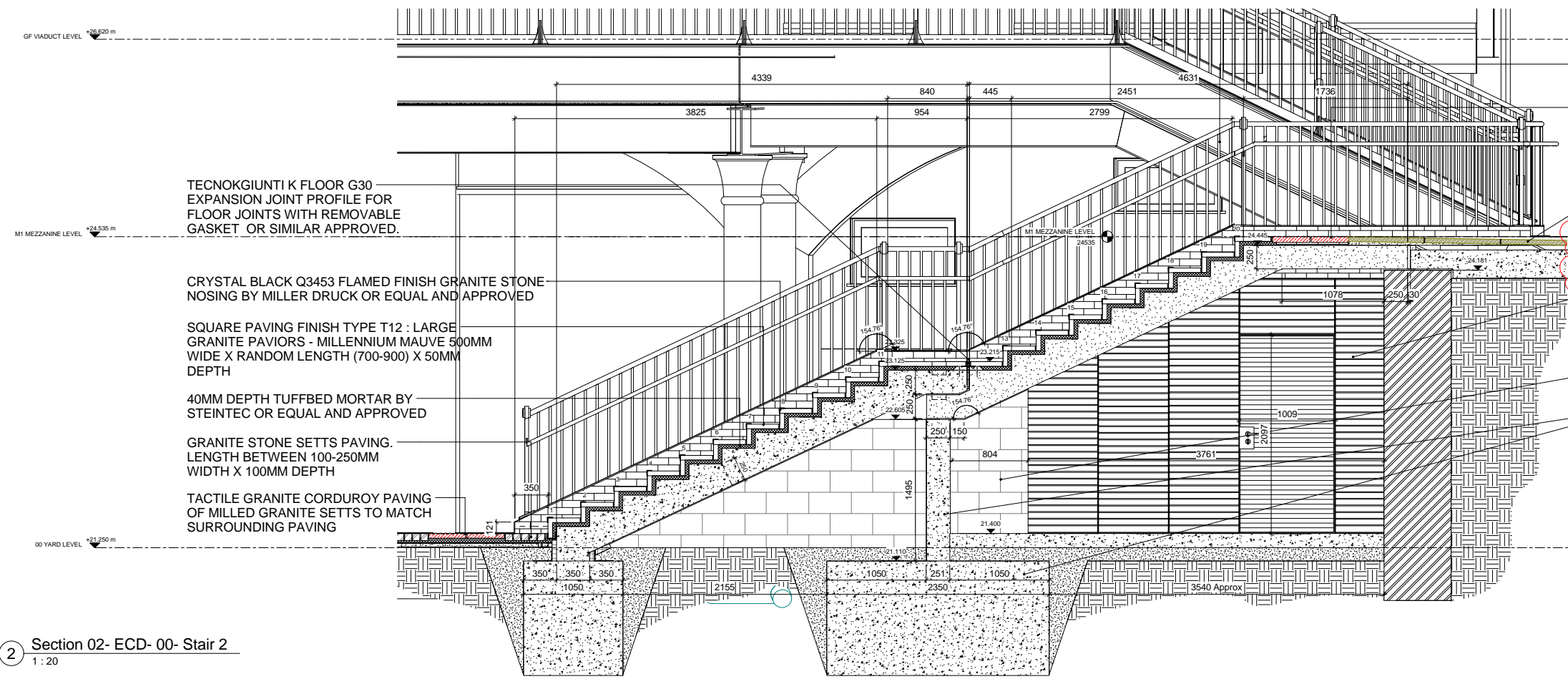
COAL DROPS YARD
ECD-00 Stair 02 - Plans

As indicated @ A0
04.12.2015
KXC-M2- 001-BD4389-A-(24)-400120 002



- REFER TO BALUSTRADE DETAIL DRAWINGS PACKAGE FOR SPECIFICATIONS AND DETAILS
- CRYSTAL BLACK Q3453 FLAMED FINISH GRANITE STONE NOSING BY MILLER DRUCK OR EQUAL AND APPROVED
- TECNOGIUNTI K FLOOR G30 EXPANSION JOINT PROFILE FOR FLOOR JOINTS WITH REMOVABLE GASKET OR SIMILAR APPROVED.
- LENGTH 900MM X 400MM WIDTH X 50MM DEPTH FLAMED MILLENNIUM MAUVE GRANITE STONE CLADDED STEPS BY MILLER DRUCK OR EQUAL AND APPROVED
- 40MM DEPTH TUFFBED MORTAR BY STEINTEC OR EQUAL AND APPROVED
- GRANITE STONE SETTS PAVING. LENGTH BETWEEN 100-250MM WIDTH X 100MM DEPTH
- TACTILE GRANITE CORDUROY PAVING OF MILLED GRANITE SETTS TO MATCH SURROUNDING PAVING
- OUTLINE OF EXISTING CONCRETE SLAB REMOVED TO ALLOW FOR INSTALLATION OF STAIRS AND YARD NEW PAVING
- STAINLESS STEEL STARTING PROFILE FIXED TO PRECAST SLAB TO SUPPORT STAIR FINISHES
- RC CONCRETE MASS FOOTING TO STRUCTURAL ENGINEER DESIGN
- L SHAPED STEEL PROFILE FIXED TO TOP OF FOUNDATIONS TO RETAIN FLOOR BUILDUP
- 50MM THICK POLYSTYRENE INSERTS TO SIDES OF PRECAST STAIRS

1 Section 01- ECD- 00- Stair 2
1 : 20

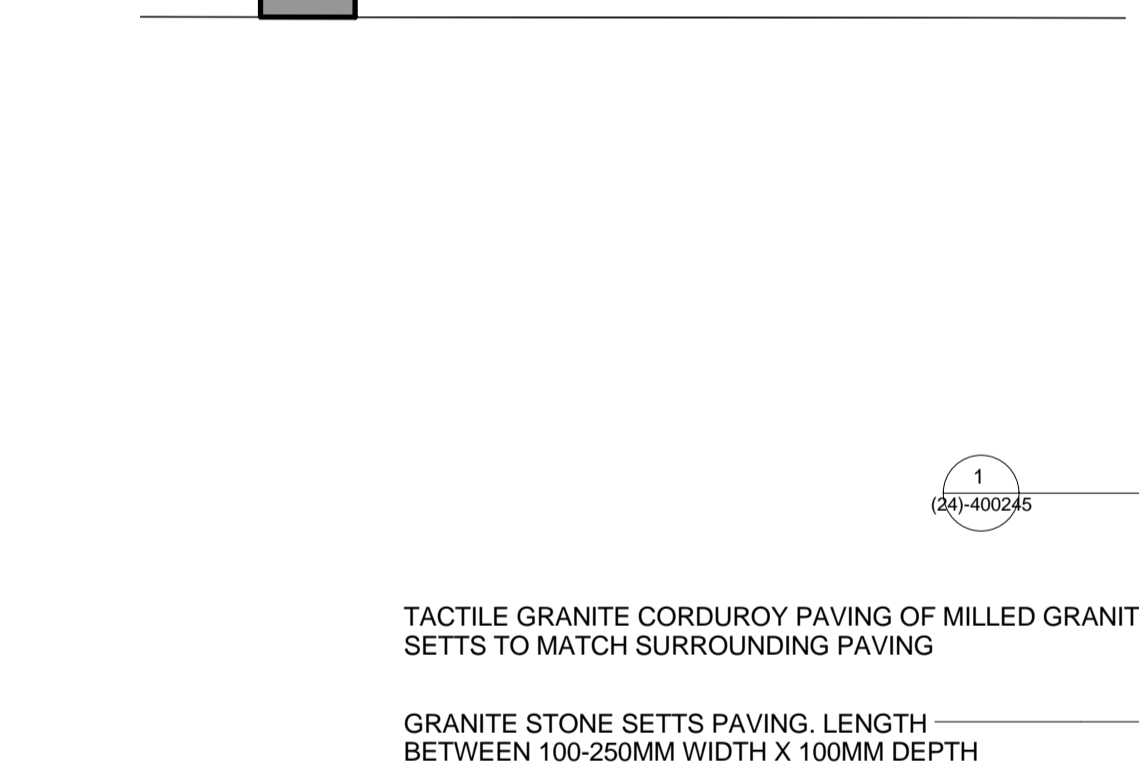
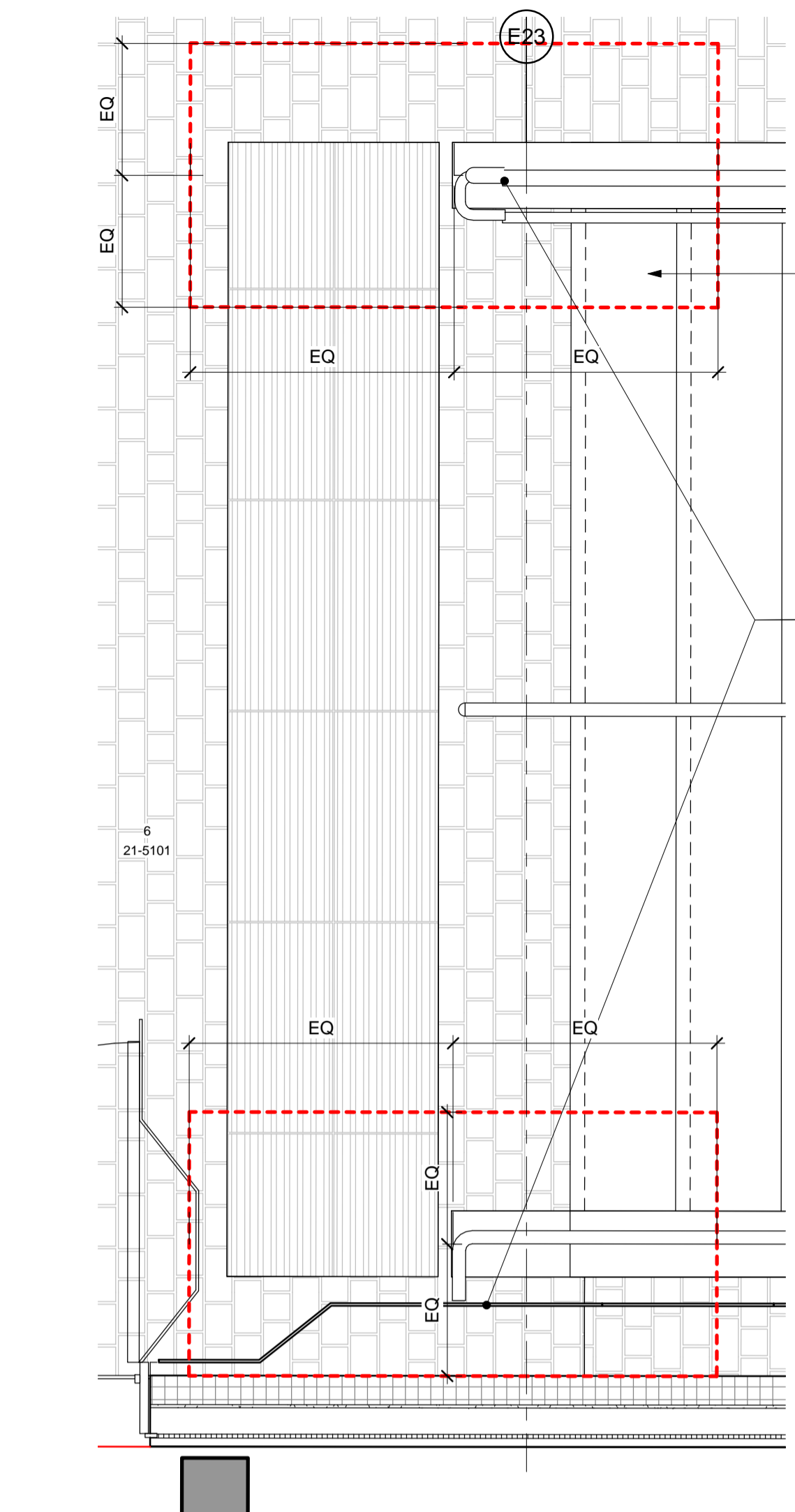


3 Detail of Nosing
1 : 5

2 Section 02- ECD- 00- Stair 2
1 : 20

KEY PLAN
 Tab-select then edit family to add your keyplan





NOTES

- Handrail and main posts side loads to be designed to 3KN/m
- Infill spindles to be designed to 1.5 KN/m
- Stairs and associated balustrades to comply with Part K and M of the Approved Building Regulations; BS539; BS EN1991; BS6180 & BS8300
- Mid rails to be included for all the stairs wider than 1800mm
- Design and installation of all handrails to be done ensuring that the handrails do not project more than 100mm into the stairway.
- Depth of waist and landings to be confirmed by specialist sub-contractor. Depth of the Stringer may vary from 250mm to 575mm- please refer to details for specific Stringer heights. 150mm deep Composite Tray landings indicated.
- Stair Goings to be more 280 mm and varie for each stair; Risers to be 166 mm (unless otherwise stated in the drawing) with 25mm projected nosings, refer to floor finishes schedule for contrasting nosing.
- Additional hand rails need to be fixed to the main balustrade as shown in details.
- Handrail heights - 900mm (Stair flight)
- Flight Guarding heights - 1100mm to 1250mm (Stair flights and Landings/Balconies)
- General Guarding heights - 1250 to walkways
- Handrail surface is to be of a material which is slip resistant and does not get excessively cold or hot to touch.

NOTES

- Design intent shown in drawings.
- Handrail and main posts side loads to be designed to 3KN/m
- Infill spindles to be designed to 1.5 KN/m
- Stairs and associated balustrades to comply with Part K and M of the Approved Building Regulations; BS539; BS EN1991; BS6180 & BS8300
- Mid rails to be included for all the stairs wider than 1800mm
- Design and installation of all handrails to be done ensuring that the handrails do not project more than 100mm into the stairway.
- Depth of waist and landings to be confirmed by specialist sub-contractor. Depth of the Stringer may vary from 250mm to 575mm- please refer to details for specific Stringer heights. 150mm deep Composite Tray landings indicated.
- Stair Goings to be more 280 mm and varie for each stair; Risers to be 166 mm (unless otherwise stated in the drawing) with 25mm projected nosings, refer to floor finishes schedule for contrasting nosing.
- Additional hand rails need to be fixed to the main balustrade as shown in details.
- Handrail heights - 900mm (Stair flight)
- Flight Guarding heights - 1100mm to 1250mm (Stair flights and Landings/Balconies)
- General Guarding heights - 1250 to walkways
- Handrail surface is to be of a material which is slip resistant and does not get excessively cold or hot to touch.
- Design intent shown in drawings.

001 VH JC 12.06.17 Issued for Construction
rev by chd dan description

LM1 Mezzanine Level - LSS- 00- Stair 5 - Callout 1

1 : 20

Concrete base 140mm min below YARD LEVEL to support stairbase and balustrade by SE see details

LIGHTING CONDUIT POST
Integrated conduit route to end post. conduit route TBC

BALUSTRADE TYPE 09s
Top rail - 60.3mm Dia on 25mm dia spigot - Mild steel
PPC painted top rail & Balusters made form 20mm square steel sections with feature post at 1905mm c/c's with plate to allow fixing to concrete upstand with Brickwork, all steel to be primed and painted RAL 7021. See NBS Spec L30/550-570. To Structural Stairways details.

GENERAL NOTES :

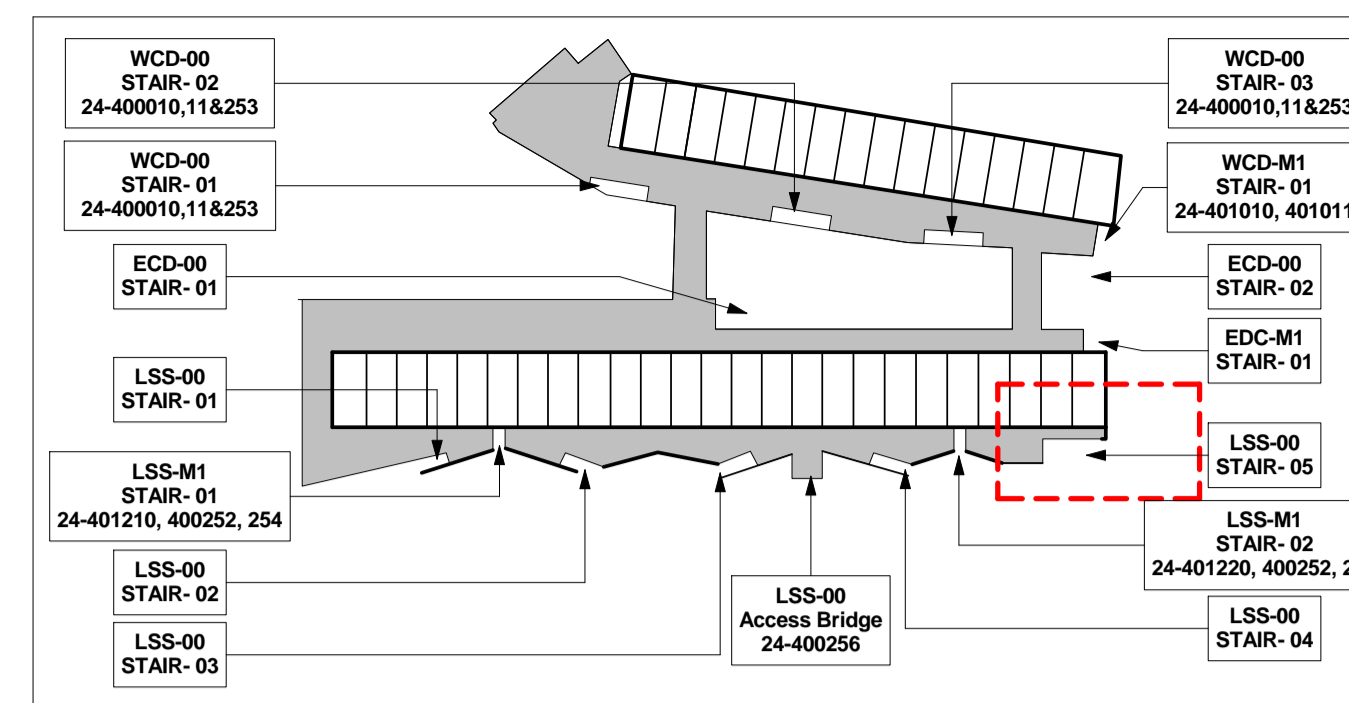
- All Stainless steel to be 316 grade, All fixings are to be by specialist sub - Contractor to provided the side loadings of 3kN/m for handrails, posts, infill spindles to 1.5kN/m.

- Top Rail to be painted PPC mild steel. Secondary Handrails to be tubular 316 grade stainless steel with bead blasted finish.

- Stair and balustrade design and fixings to be by specified by specialist sub contractor to comply with required loadings, copy of calculations are required to be submitted to BCO.

- Staircases to be design to prevent reverberation or bounce when in use.

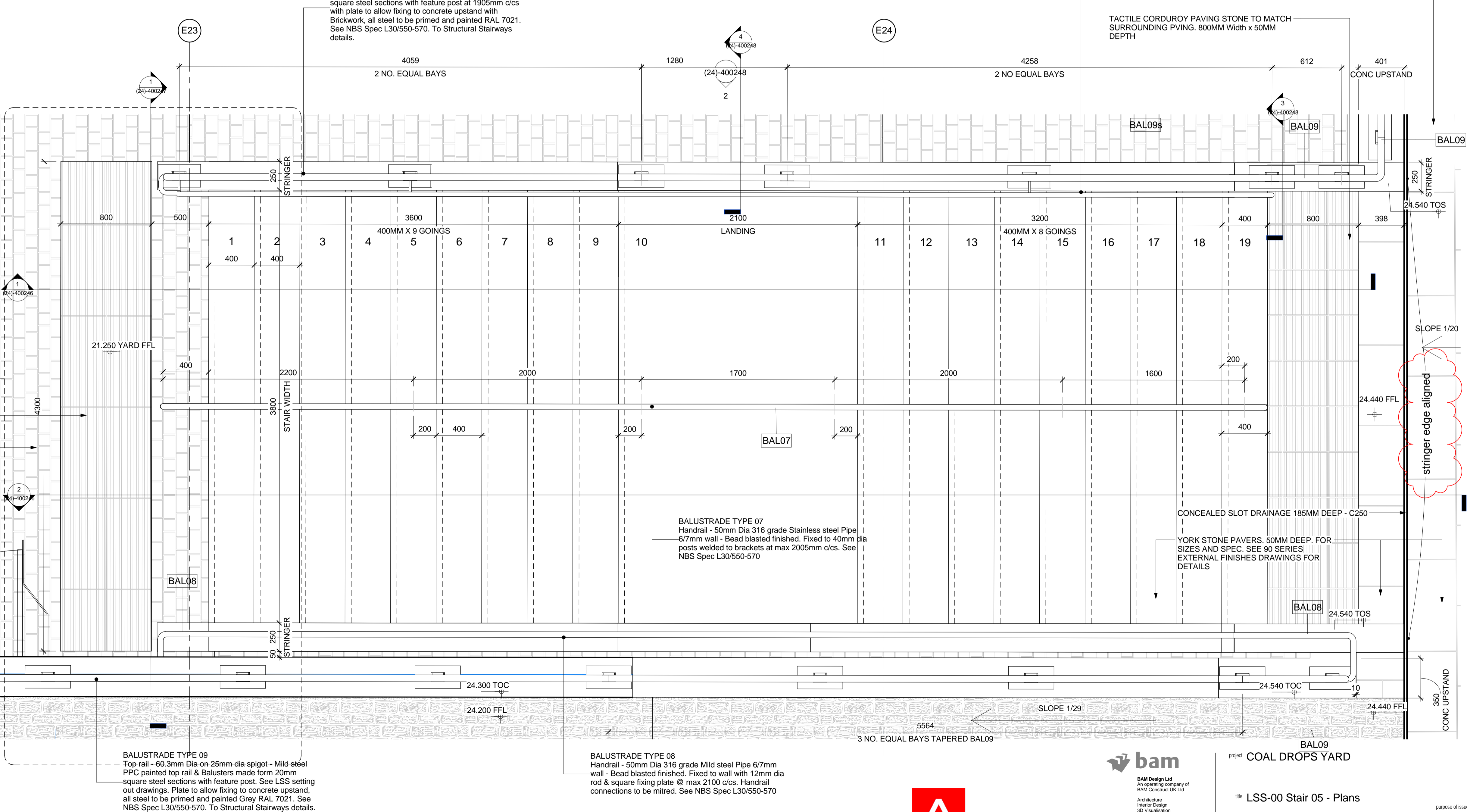
- Sub contractor to provided adequate protection / separation between different metal types to prevent electrolysis or bimetallic action taking place.



Stair (External) Keyplan

DO NOT SCALE FROM THIS DRAWING.
ALL DIMENSIONS TO BE CHECKED ON SITE.
FOR REFERENCED VIEWS REFER TO SERIES OF DRAWINGS KXC-M3-001-A-(24)

Refer to drawing 24-400248 FOR Metal Gate Details



LARGE SCALE GRANITE PAVERS TO MATCH CUBITT SQUARE PAVING. FOR SIZES AND SPEC. SEE 90 SERIES EXTERNAL FINISHES DRAWINGS FOR DETAILS

BALUSTRADE TYPE 09s
Handrail - 50mm Dia 316 grade Stainless steel Pipe 6/7mm wall - Bead blasted finished. Fixed to balustrade with 20mm square rod fixed to posts @ max 1905 c/c's. Note: Required to Guarding / handrail on slopes or staircase and all connections to be mitred.

TACTILE CORDUROY PAVING STONE TO MATCH SURROUNDING PAVING. 800MM Width x 50MM DEPTH

BALUSTRADE TYPE 07
Handrail - 50mm Dia 316 grade Stainless steel Pipe 6/7mm wall - Bead blasted finished. Fixed to 40mm dia posts welded to brackets at max 2005mm c/c's. See NBS Spec L30/550-570

YORK STONE PAVERS. 50MM DEEP. FOR SIZES AND SPEC. SEE 90 SERIES EXTERNAL FINISHES DRAWINGS FOR DETAILS

BALUSTRADE TYPE 09
Top rail - 60.3mm Dia on 25mm dia spigot - Mild steel
PPC painted top rail & Balusters made form 20mm square steel sections with feature post. See LSS setting out drawings. Plate to allow fixing to concrete upstand, all steel to be primed and painted Grey RAL 7021. See NBS Spec L30/550-570. To Structural Stairways details.

BALUSTRADE TYPE 08
Handrail - 50mm Dia 316 grade Mild steel Pipe 6/7mm wall - Bead blasted finished. Fixed to wall with 12mm dia rod & square fixing plate @ max 2100 c/c's. Handrail connections to be mitred. See NBS Spec L30/550-570



project COAL DROPS YARD

001 LSS-00 Stair 05 - Plans

scale As indicated @ A1
date 26.01.2016
checked MWB
design @ bam.co.uk
KXC-M3- 001-BD4389-A-(24)-400245 001

CONSTRUCTION

drawn V/H
checked MWB
date 26.01.2016
design @ bam.co.uk
KXC-M3- 001-BD4389-A-(24)-400245 001

001

