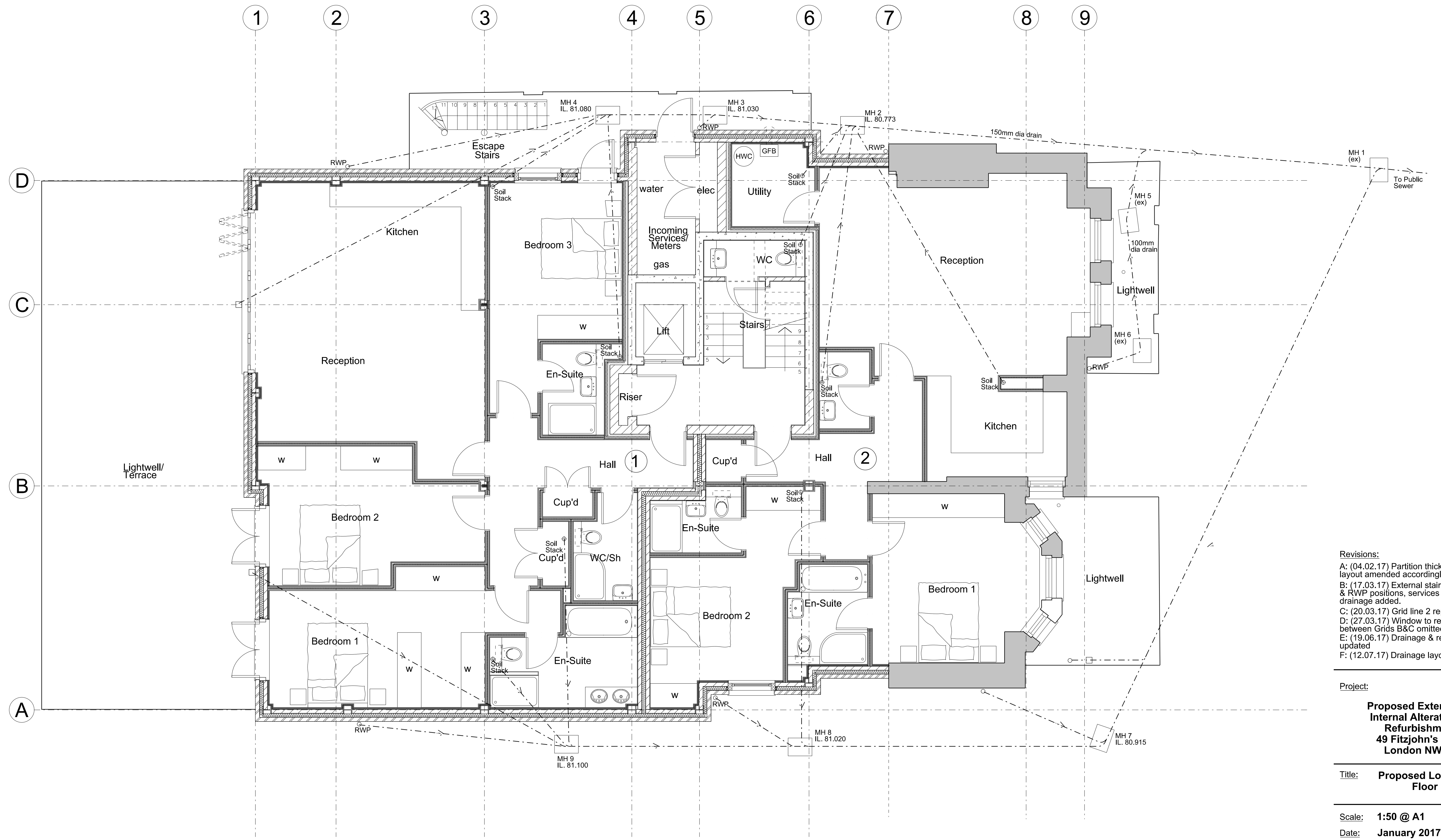


Notes:

References to stub stacks/RWP's/gulleys etc. to Northern and Southern drainage runs as shown on separate drainage schedule.



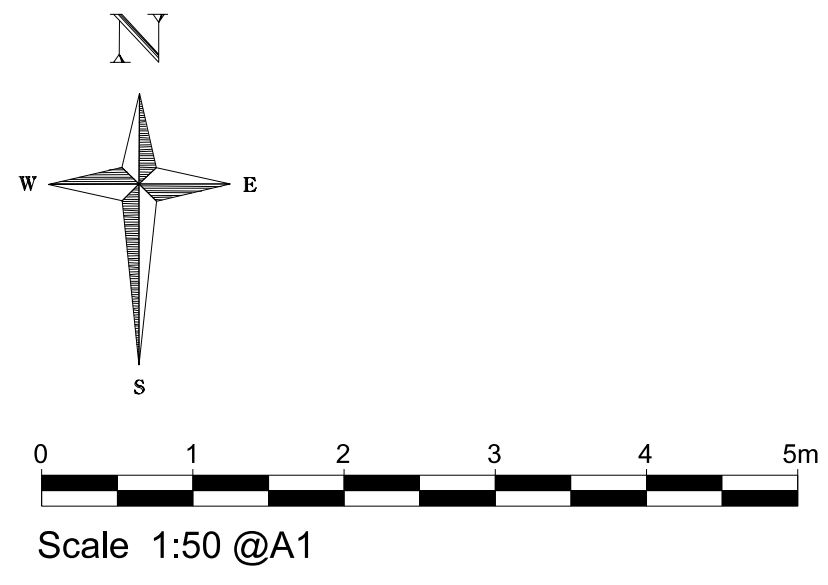
- Revisions:**
- A: (04.02.17) Partition thickness amended, layout amended accordingly.
 - B: (17.03.17) External staircase, soil stack & RWP positions, services & below ground drainage added.
 - C: (20.03.17) Grid line 2 repositioned
 - D: (27.03.17) Window to rear elevation between Grids B&C omitted.
 - E: (19.06.17) Drainage & rear lightwell updated
 - F: (12.07.17) Drainage layout updated.

Project:
Proposed Extension and Internal Alterations and Refurbishment of 49 Fitzjohn's Avenue London NW3 6PG

Title: **Proposed Floor Ground Floor Plan**

Scale: 1:50 @ A1
Date: January 2017

Oakley Hough.
 The Barn, Stebbing Farm
 Fishers Green, Stevenage,
 Hertfordshire SG1 2JB
 Tel: 01438 745288
 Mobile: 07710 549 270
 e-mail: john@oakleyhough.co.uk



Drawing Number: 892/100 F