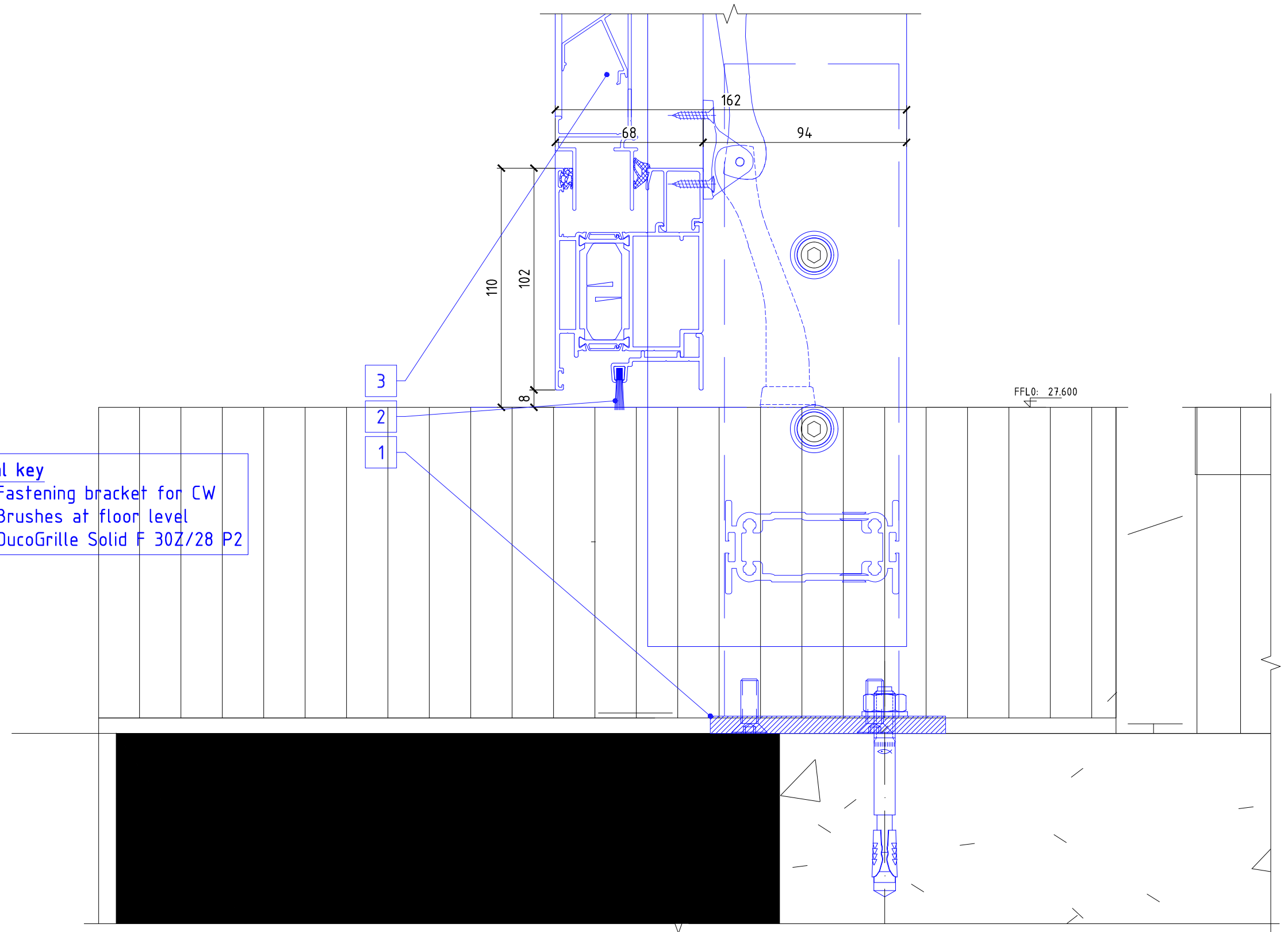


VD-39



Material key
 1. Fastening bracket for CW
 2. Brushes at floor level
 3. DucoGrille Solid F 30Z/28 P2


FOR ATTENTION:

- * PowellDobson issued drawing include all opening construction tolerances.
- * Skonto windows dimensions do not include additional tolerances.
- * All openings will be not measured prior to manufacture.

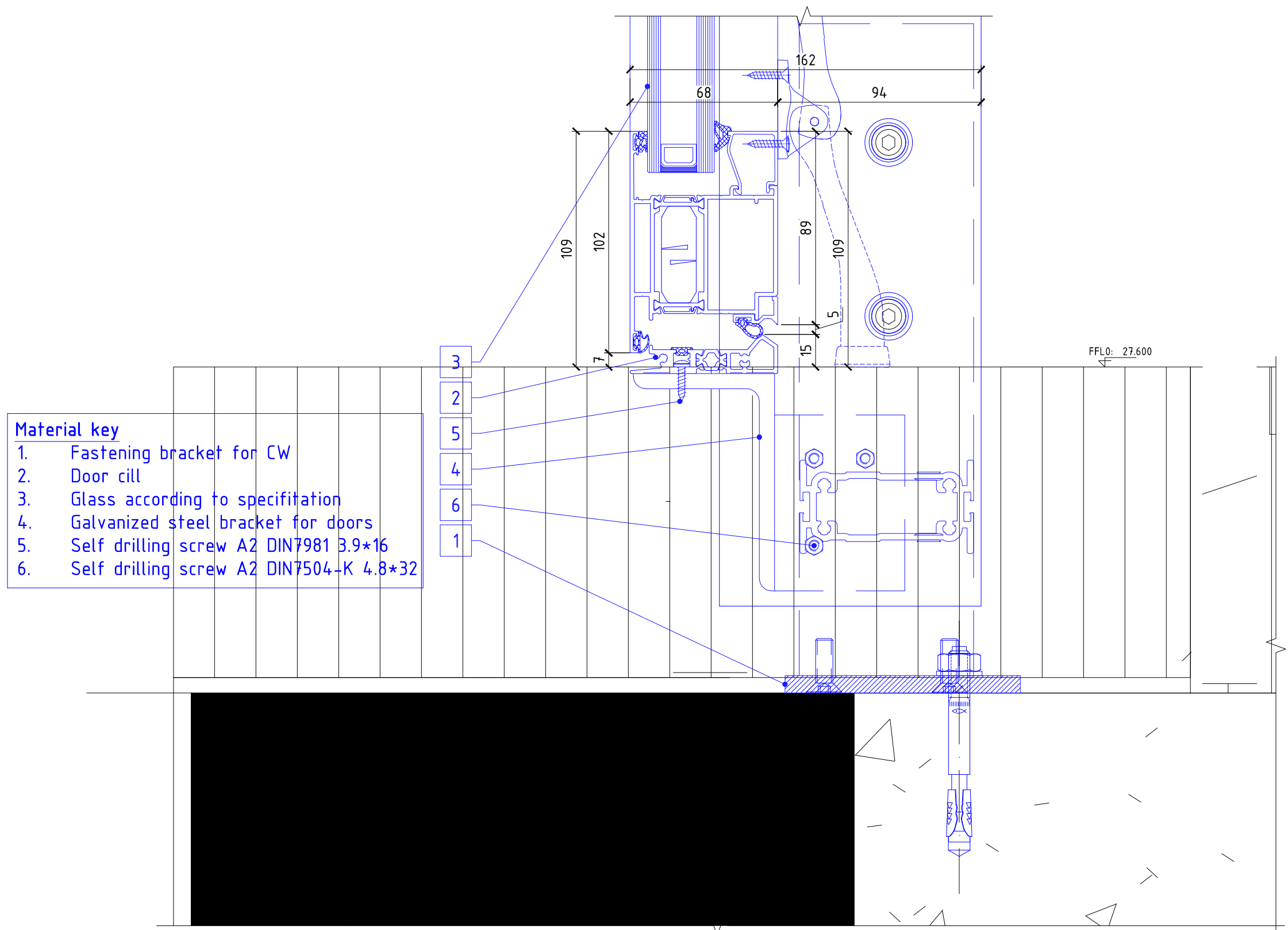
Responsibilities by color

 - Skonto responsibility - OTHERS responsibility

Notes:	
System	CW 50
Internal finish	RAL7037
External finish	As inside
Ironmongery	Standard
Glass combination	Depends of elevation
Please see specification tables	

Rev A	Initial drawing	13.04.2017	AM
Revision	Description	Date	Drawn
Notes: 1. Details on this drawing are the copyright of Skonto and must not be reproduced in whole or part without permission. 2. All structural opening, prepared by main contractor, to be square & plumb to sizes shown on drawing. 3. Do not scale. 4. Drawings are viewed from the outside.			
Client	Architect	Drawn	Check
United Living	Powell Dobson Architects	Agris Missa	Vitālijs Ragīna
Owner	Drawing number		
 e-mail: info@skontoenterprises.co.uk, www.skontoenterprises.co.uk	SK - 2053 - 00 - 23 - 0170		
	<small>Drawn by company</small>	<small>Project ID</small>	<small>Phase or block</small>
Title Vertical detail for GD-1 at GF		Revision	Date
VD-39		A	13.04.2017
Scale		1 : 2 @ A3	
Drawn for		Project title	
For Approval		102 Camley Street Phase 2, Taylor Wipmey Central, London	

VD-40



Material key	
1.	Fastening bracket for CW
2.	Door cill
3.	Glass according to specification
4.	Galvanized steel bracket for doors
5.	Self drilling screw A2 DIN7981 3.9*16
6.	Self drilling screw A2 DIN7504-K 4.8*32

- 3
- 2
- 5
- 4
- 6
- 1

FOR ATTENTION:

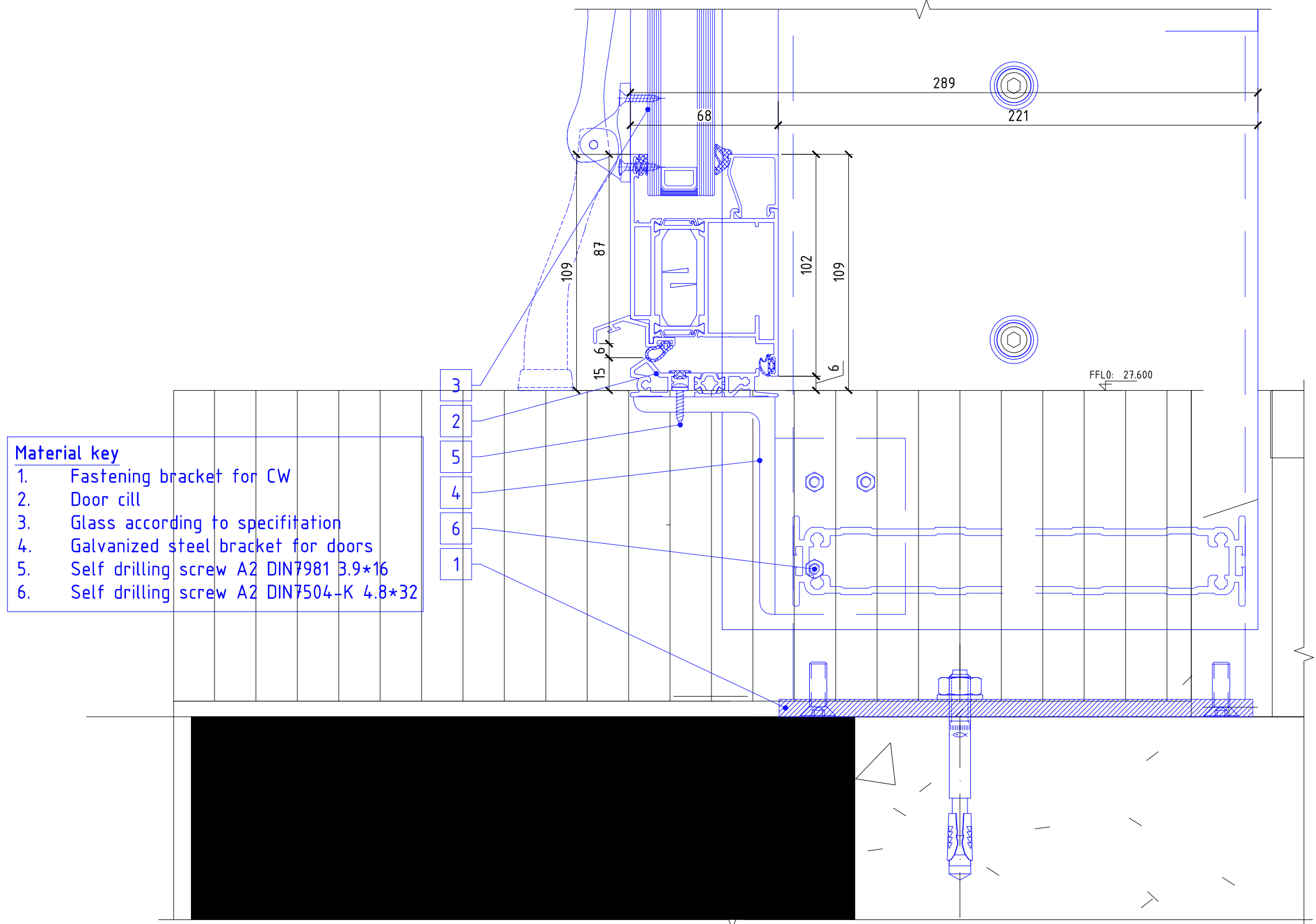
- * PowellDobson issued drawing include all opening construction tolerances.
- * Skonto windows dimensions do not include additional tolerances.
- * All openings will be not measured prior to manufacture.

Responsibilities by color

 - Skonto responsibility - OTHERS responsibility

Notes:	
System	CW 50
Internal finish	RAL7037
External finish	As inside
Ironmongery	Standard
Glass combination	Depends of elevation
Please see specification tables	

Rev A	Initial drawing	13.04.2017	AM
Revision	Description	Date	Drawn
Notes: 1. Details on this drawing are the copyright of Skonto and must not be reproduced in whole or part without permission. 2. All structural opening, prepared by main contractor, to be square & plumb to sizes shown on drawing. 3. Do not scale. 4. Drawings are viewed from the outside.			
Client	Architect	Drawn	Check
United Living	Powell Dobson Architects	Agris Missa	Vitālijs Ragina
Owner	Drawing number		
	SK - 2053 - 00 - 23 - 0171		
	Title Vertical detail for Outward opening doors at GF VD-40		Revision Date Scale
			A 13.04.2017 1 : 2 @ A3
Drawn for		Project title	
For Approval		102 Camley Street Phase 2, Taylor Wipmey Central, London	



Material key

1.	Fastening bracket for CW
2.	Door cill
3.	Glass according to specification
4.	Galvanized steel bracket for doors
5.	Self drilling screw A2 DIN7981 3.9*16
6.	Self drilling screw A2 DIN7504-K 4.8*32

- 3
- 2
- 5
- 4
- 6
- 1

FOR ATTENTION:

- * PowellDobson issued drawing include all opening construction tolerances.
- * Skonto windows dimensions do not include additional tolerances.
- * All openings will be not measured prior to manufacture.


Responsibilities by color

 - Skonto responsibility - OTHERS responsibility

Notes:

System	CW 50
Internal finish	RAL7037
External finish	As inside
Ironmongery	Standard
Glass combination	Depends of elevation

Please see specification tables

Rev A	Initial drawing	13.04.2017	AM
Revision	Description	Date	Drawn
Notes: 1. Details on this drawing are the copyright of Skonto and must not be reproduced in whole or part without permission. 2. All structural opening, prepared by main contractor, to be square & plumb to sizes shown on drawing. 3. Do not scale. 4. Drawings are viewed from the outside.			
Client	Architect	Drawn	Check
United Living	Powell Dobson Architects	Agris Missa	Vitālijs Ragina
Owner	Drawing number		
 <small>e-mail: info@skontoenterprises.co.uk, www.skontoenterprises.co.uk</small>	SK - 2053 - 00 - 23 - 0172		
	<small>Drawn by company</small>	<small>Project ID</small>	<small>Phase or block</small>
Title Vertical detail for Intward opening doors at GF VD-41		Revision A	Date 13.04.2017
Scale 1 : 2 @ A3			
Drawn for For Approval		Project title 102 Camley Street Phase 2, Taylor Wipmey Central, London	