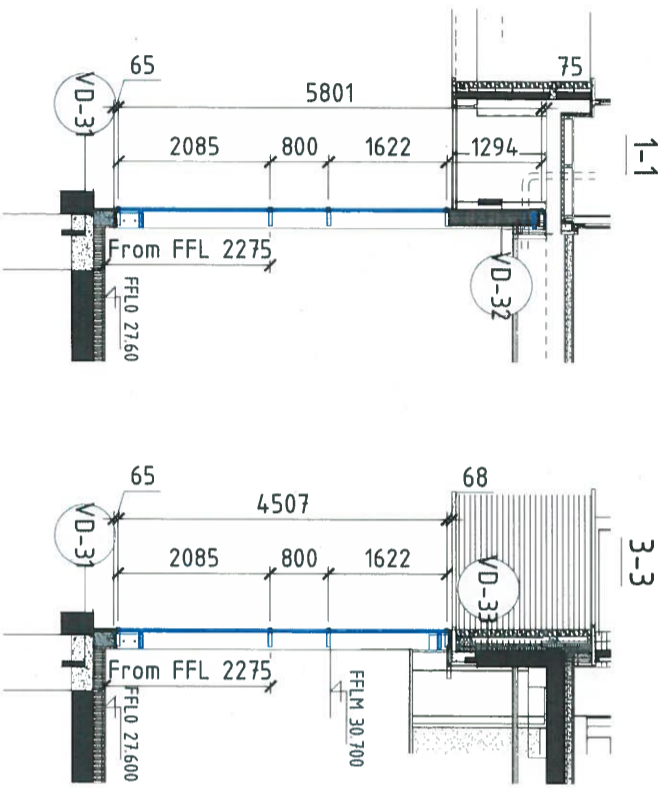
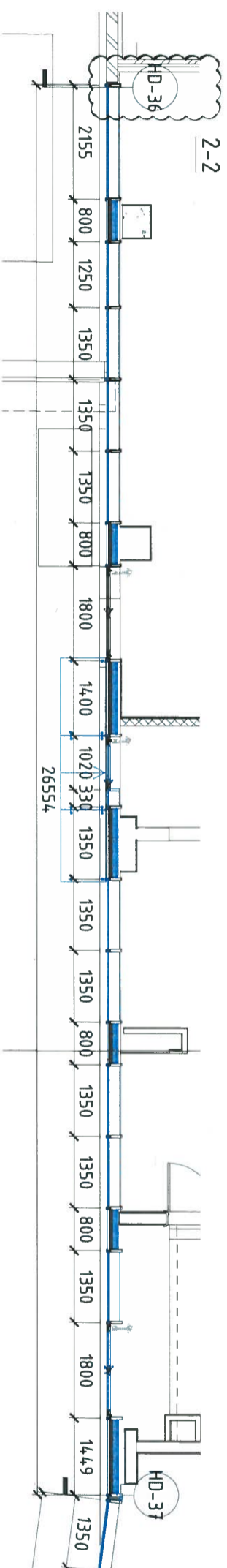
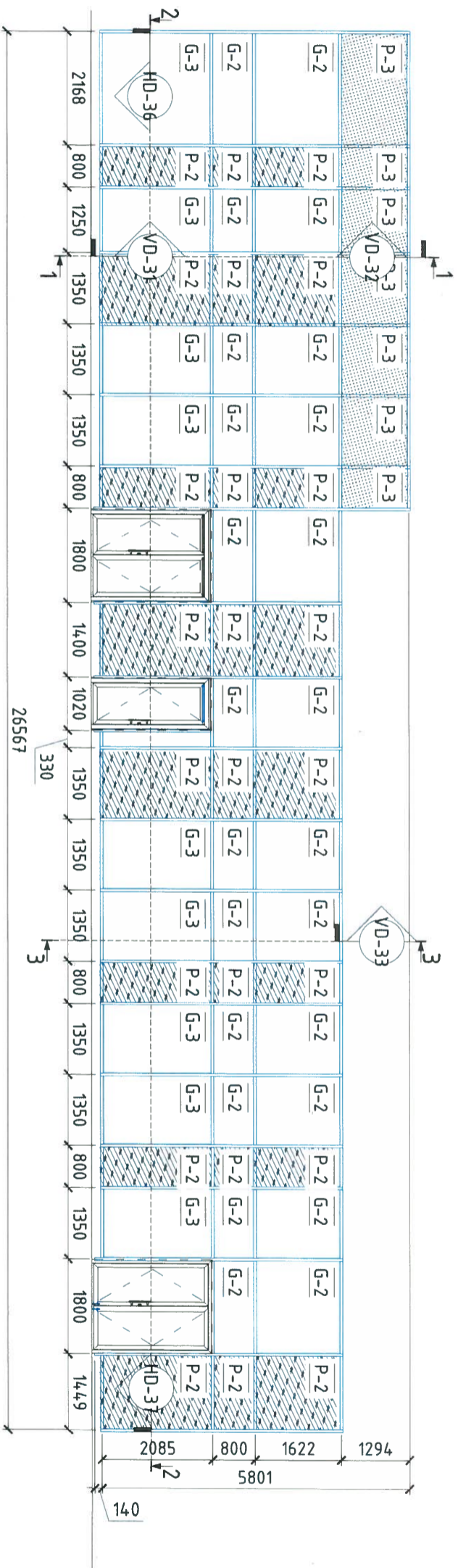


Curtain wall GF Axis 2-5 on D



FOR ATTENTION:

- * PowellDobson issued drawing (21)473
- * include all opening construction tolerances.
- * Skonto windows dimensions do not include additional tolerances.
- * All openings will be not measured prior to manufacture.

Responsibilities by color

- Skonto responsibility

- OTHERS responsibility

Notes:

1. Details on this drawing are the copyright of Skonto and must not be reproduced in whole or part without permission.
2. All structural opening, prepared by main contractor, to be square & plumb to sizes shown on drawing.
3. Do not scale.
4. Drawings are viewed from the outside.

Revision	Description	Date	Drawn
Rev D	Changed CW corner connection HD-36	03.05.2017	AM
Rev C	Changed dimensions, mezz level transom heights	07.04.2017	AM
Rev B	Changed blind zone solution to E160	24.03.2017	AM
Rev A	Initial drawing	08.02.2017	AM

System	CW 50
Internal finish	RAL7037
External finish	As inside
Inomongery	-
Glass combination	Depends of elevation

Please see specification tables

Client	United Living	Architect	Powell Dobson Architects	Drawn	Agrijs Missa	Check	Vitālijs Ragina
Owner	SK	Project ID	2053	Phase or block	00	Revision	22
Drawn for	SKONTOSK	Project ID	2053	Phase or block	00	Revision	22
For Approval	SKONTOSK	Project ID	2053	Phase or block	00	Revision	22
Project title	102 Camley Street Phase 2, Taylor Wimpsey Central, London						
Scale	1 : 100 @ A3						