



**EARLHAM ENTRANCE
CLOSE UP ELEVATION**
(Scale 1:50)

Metal profile frame, projecting external sign.
Frame fixed to brick using anchor bolts (sized by fabricator).
Frame finish; Powder coated in graphite black RAL 9011.
Opal acrylic panels to both sides. Background is masked with
solid (blackout) external grade vinyl film, finished in graphite
black RAL 9011
See fabricators drawing: Ref: 14182-03 for further details.

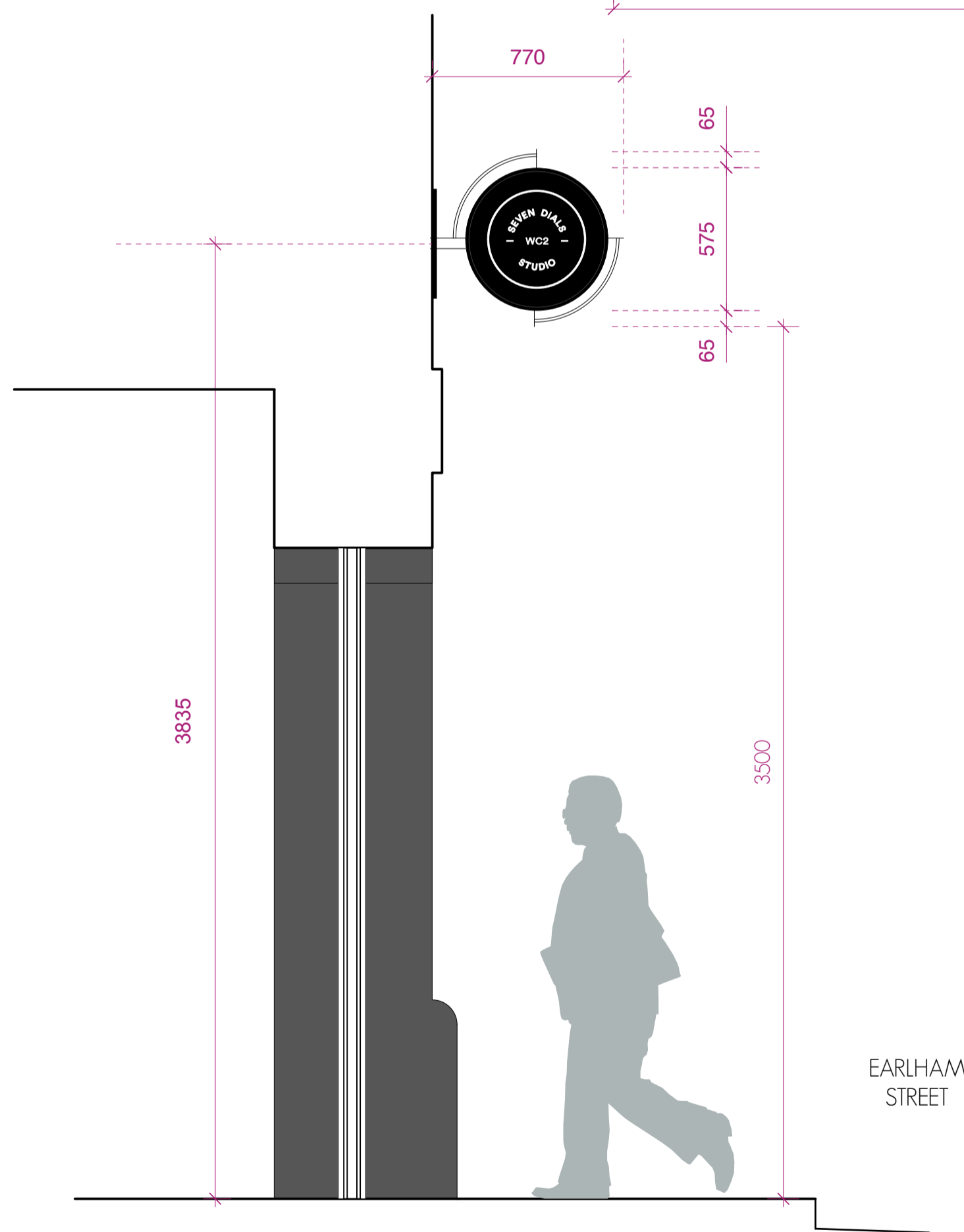
BELGO RESTAURANT
Fire exit
(No Change)

44 EARLHAM STREET
Studio B1 Office

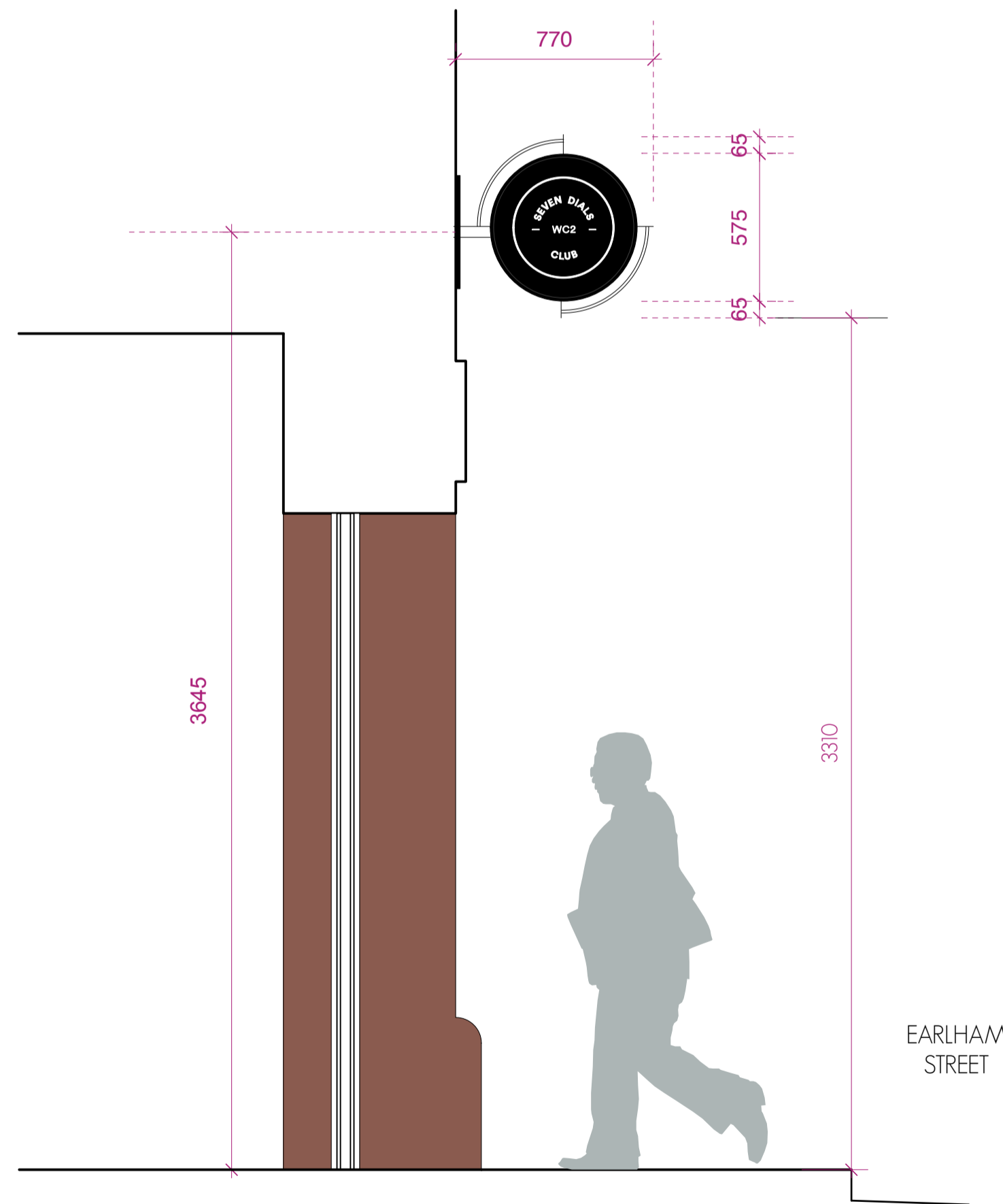
AREA OF ALTERATIONS AT GROUND FLOOR
(Street level)

42 EARLHAM STREET
Warehouse B1 Office

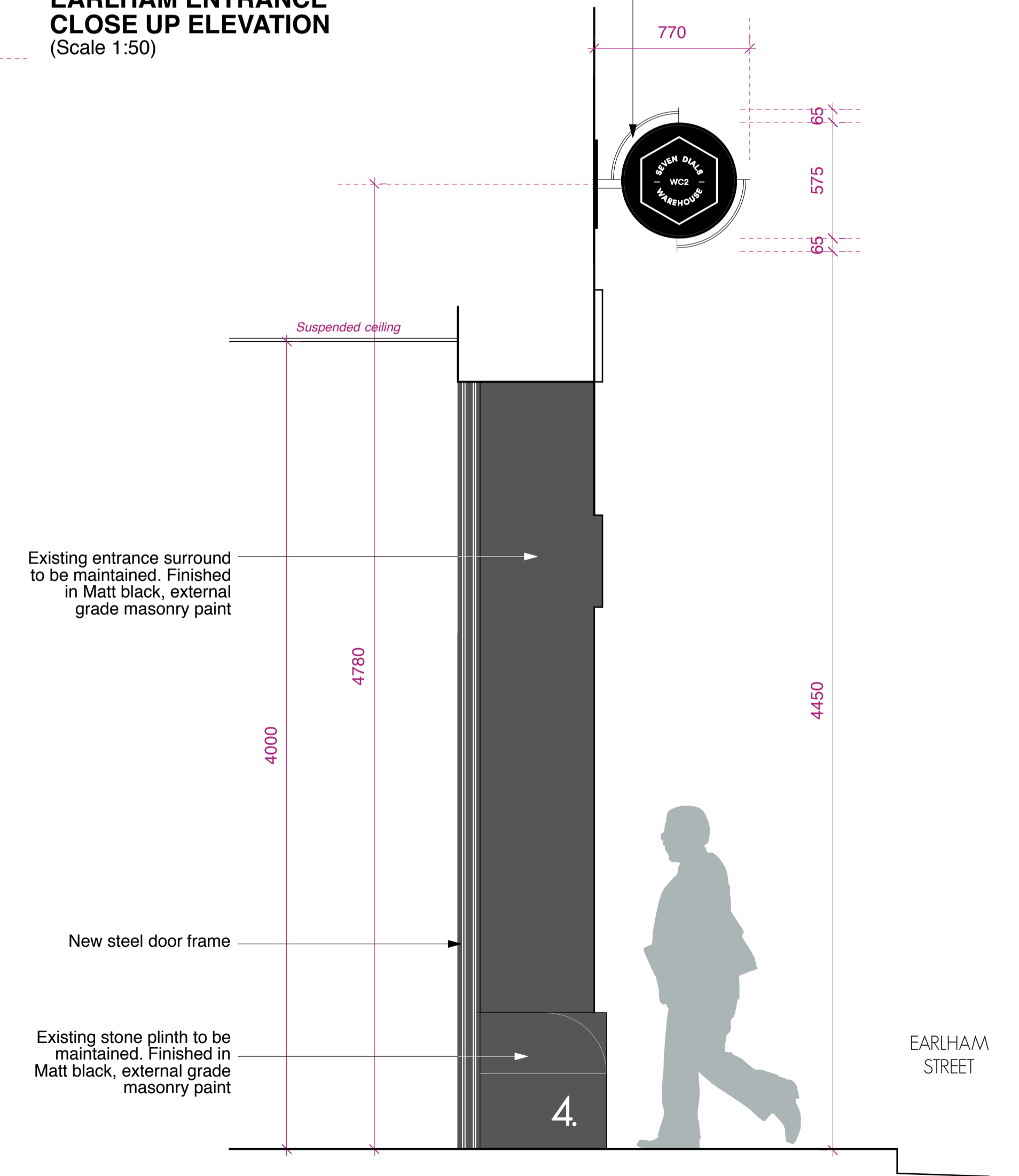
SEVEN DIALS CLUB
Entrance



1. SEVEN DIALS STUDIO
(Scale 1:20 @ A1)



2. SEVEN DIALS CLUB
(Scale 1:20 @ A1)



3. SEVEN DIALS WAREHOUSE
(Scale 1:20)

PROPOSED EARLHAM STREET EXTERNAL SIGNAGE



PLANNING

PROJECT	SEVEN DIALS WAREHOUSE LONDON WC2	
CLIENT	PEC NEALE LTD	
SCALE	1:50 & 1:20 @ A1	DATE MAR 17
CHKD.	DS	DWG. NO. 527S-AS.01
REV.	A	REV. A

PROJECT	SEVEN DIALS WAREHOUSE LONDON WC2	
CLIENT	PEC NEALE LTD	
SCALE	1:50 & 1:20 @ A1	DATE MAR 17
CHKD.	DS	DWG. NO. 527S-AS.01
REV.	A	REV. A

DRAWING TITLE	PROPOSED EARLHAM STREET EXTERNAL SIGNAGE	
CLIENT	PEC NEALE LTD	
SCALE	1:50 & 1:20 @ A1	DATE MAR 17
CHKD.	DS	DWG. NO. 527S-AS.01
REV.	A	REV. A

gpad architecture & interior design
T: 020 7549 2133
F: 020 7549 2144
E: info@gpadlondonltd.com
W: www.gpadlondonltd.com

2nd Floor
130 Old Street
London
EC1V 9BD

The drawing is the copyright of gpad london ltd. Not to be reproduced, re-used or disclosed to any unauthorised person without the written permission of gpad london ltd. Do not scale this drawing. All indicated dimensions to be checked and verified on site by the contractor before commencement of any fabrication drawings or work whatsoever on site. Report any discrepancies to the Architect immediately. Drawings to be read in conjunction with relevant drawings and specification.

© gpad london ltd.