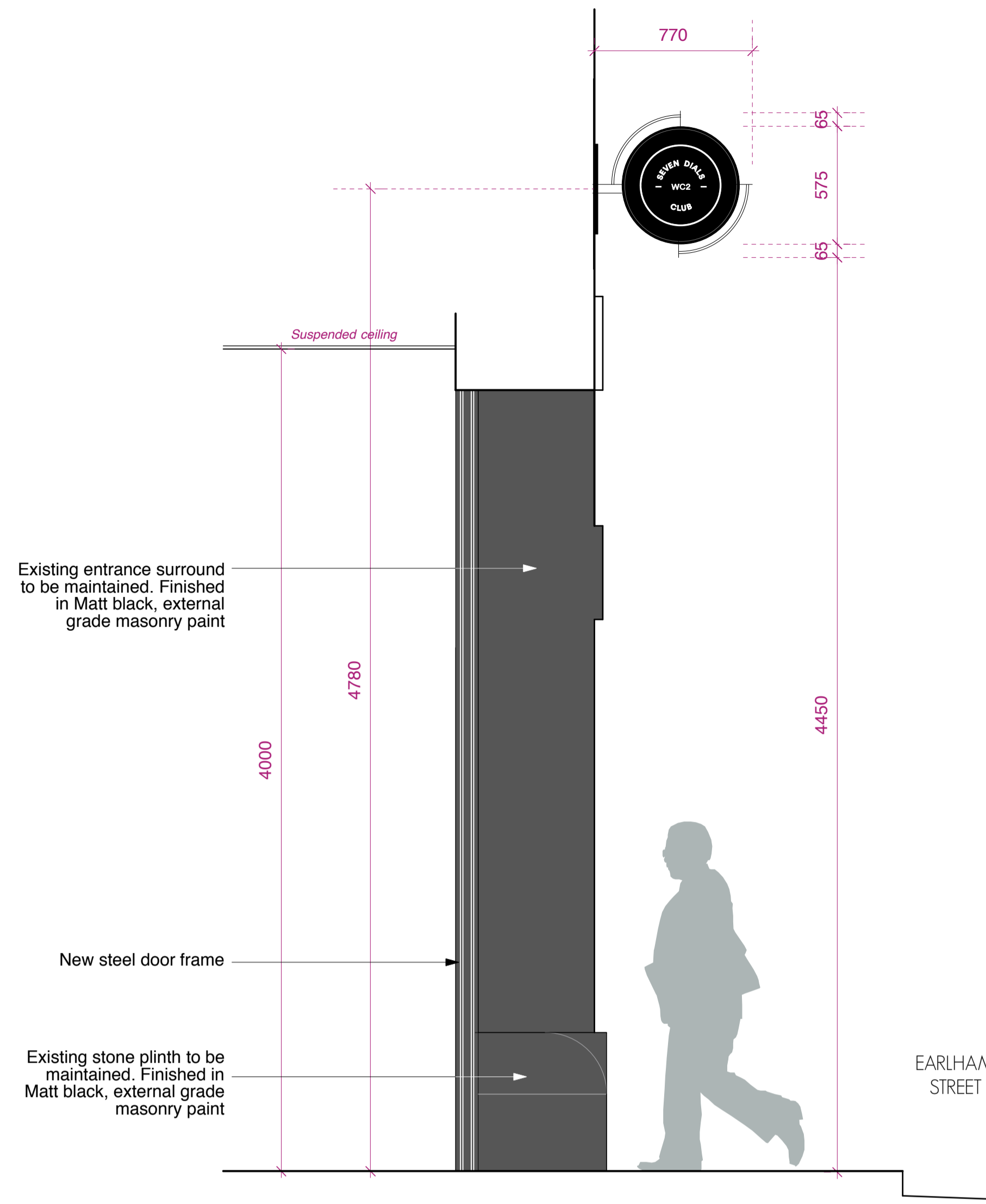
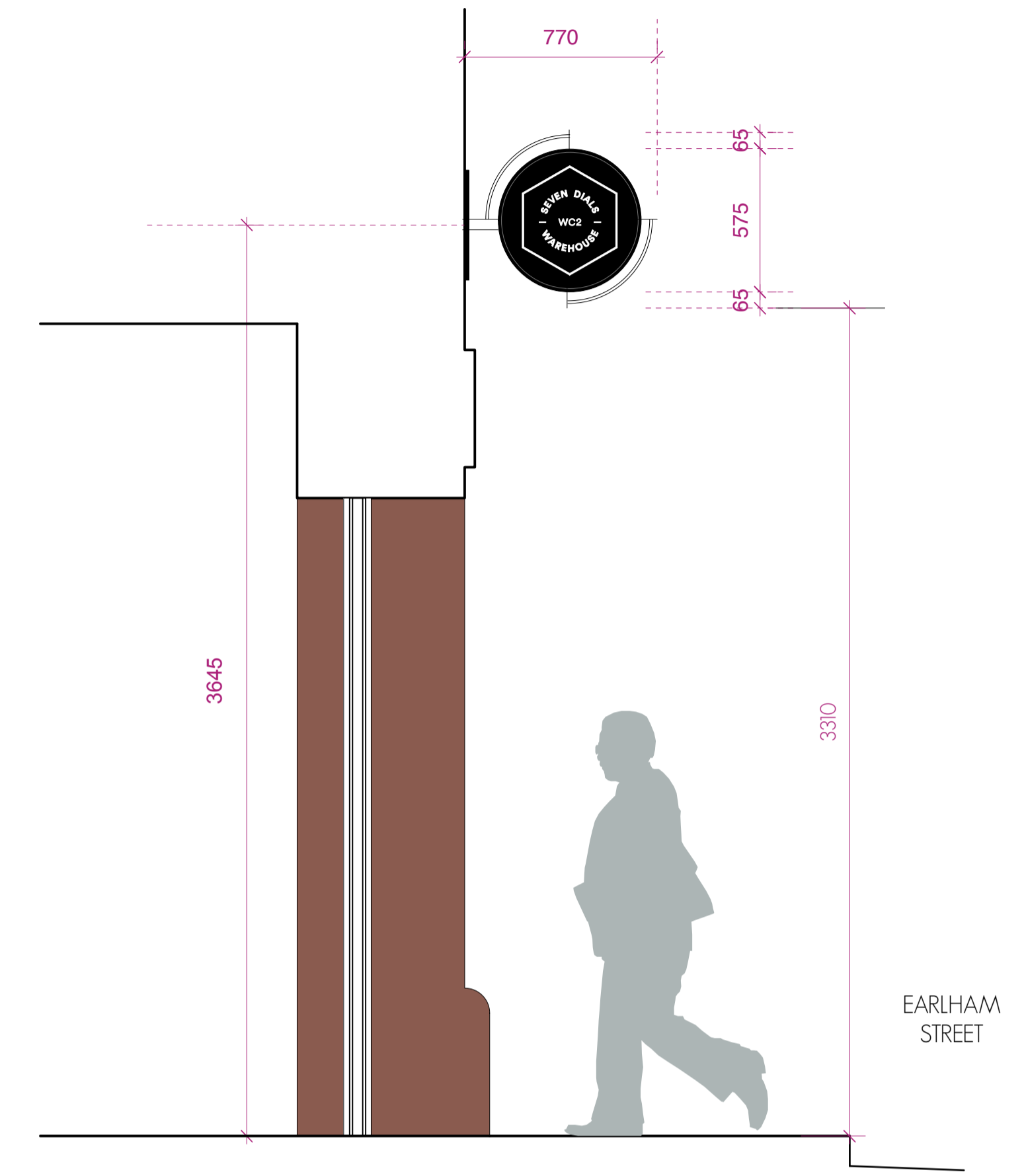


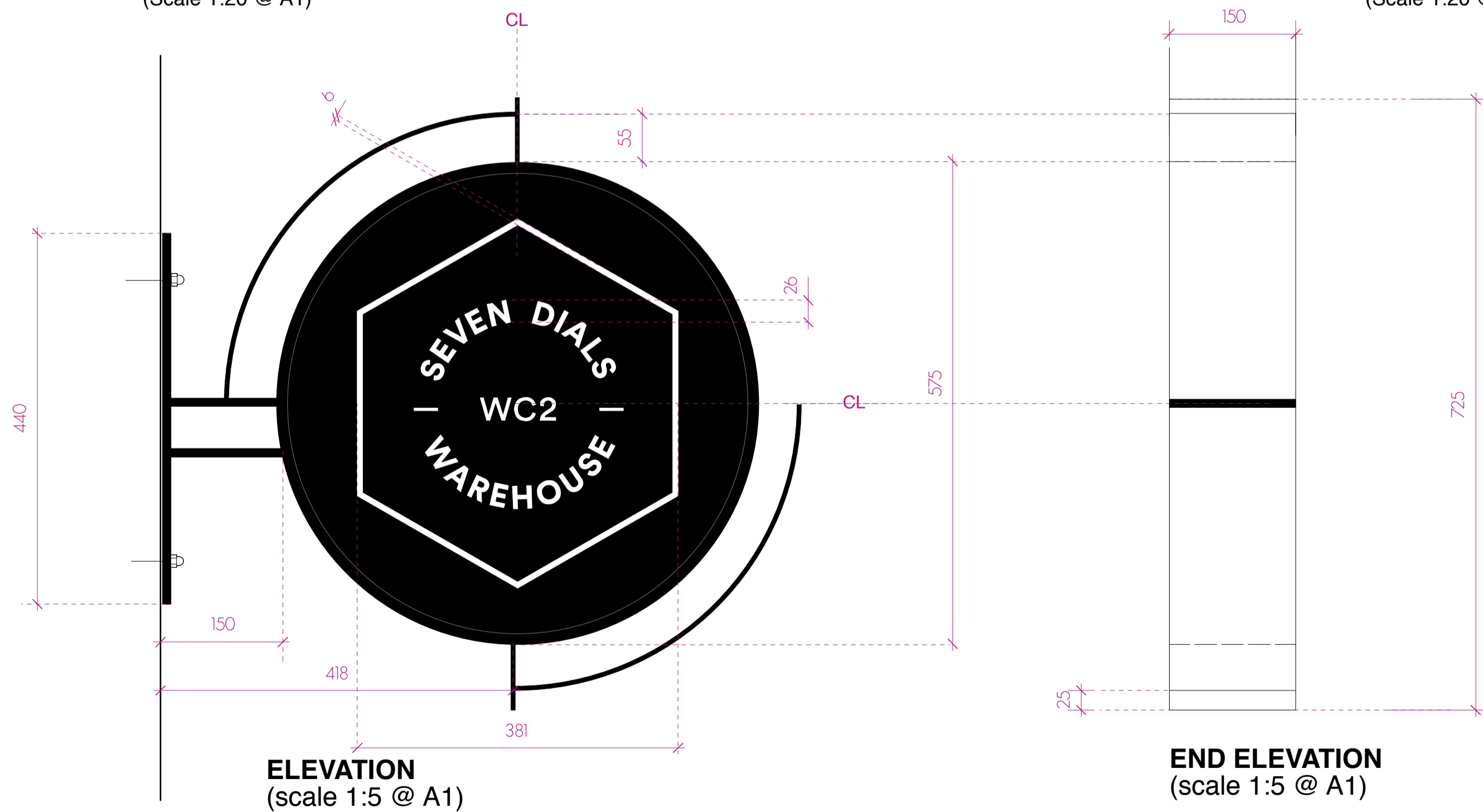
SECTION A - SEVEN DIALS STUDIO
(Scale 1:20 @ A1)



SECTION B - SEVEN DIALS WAREHOUSE
(Scale 1:20 @ A1)



SECTION C - SEVEN DIALS CLUB
(Scale 1:20 @ A1)



Metal framed, projecting sign. Frame fixed to brick using anchor bolts (sized by fabricator). Frame finish: Powder coated in graphite black RAL 9011. Opal acrylic panels to both sides. Background is masked with solid (blackout) external grade vinyl film, finished in graphite black RAL 9011. See drawing no. 527-AS.31 for details




ELEVATION KEY
(Scale 1:100)

PROPOSED PROJECTING SIGNAGE DETAILS



TO BE READ IN CONJUNCTION WITH
DRG. NO. 527 AS.29

PLANNING

PROJECT SEVEN DIALS WAREHOUSE LONDON WC2		DRAWING TITLE PROPOSED PROJECTING SIGNAGE DETAILS	
CLIENT PEC NEALE LTD		 architecture & interior design T: 020 7549 2133 F: 020 7549 2144 E: info@gpadlondonltd.com W: www.gpadlondonltd.com	
SCALE 1:5 & 1:20 @ A1	DATE MAR 17	DWG BY SF / DS	REV. A
CHCKD.	DWG NO. 527S-AS.03	Unit 1 9a Dallington Street Clerkenwell London EC1V 0BQ	
© gpad london ltd.			