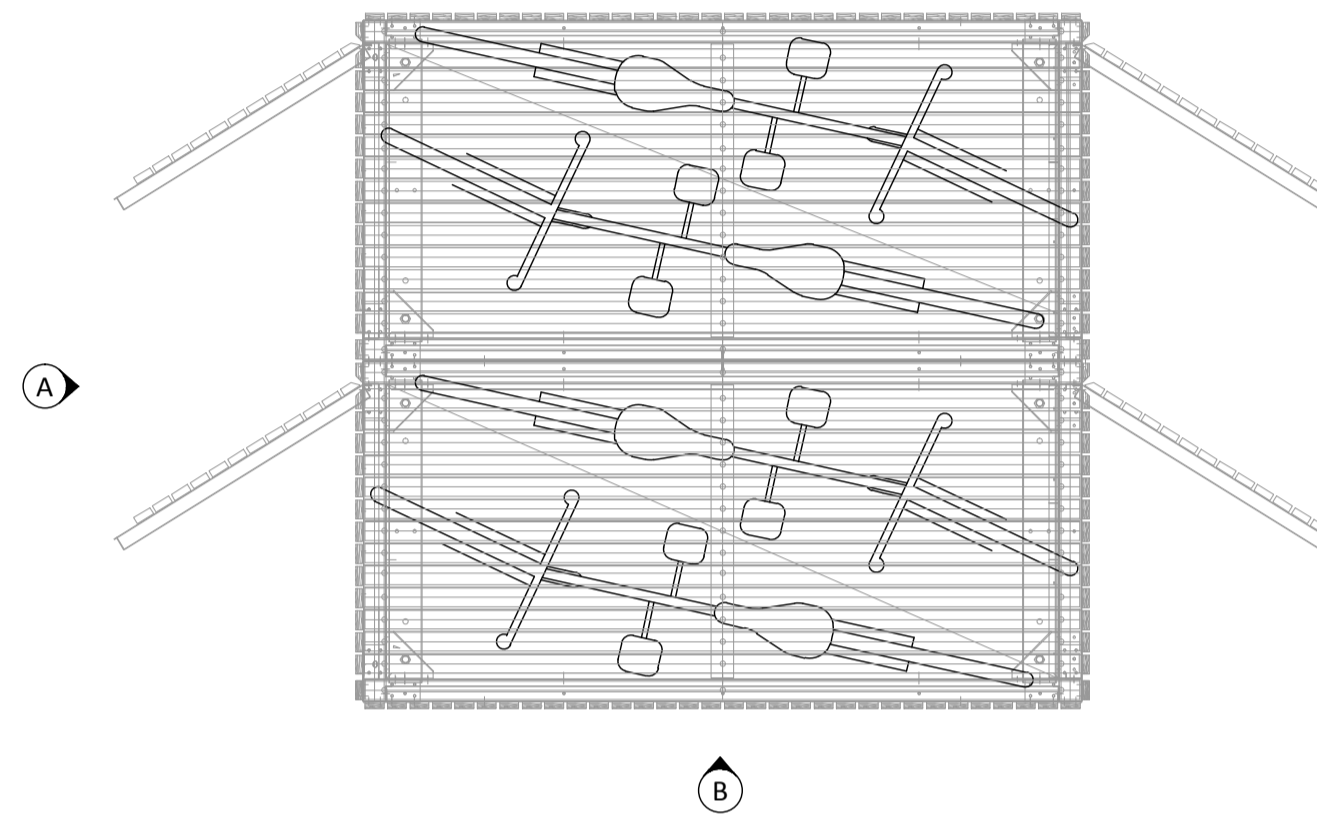


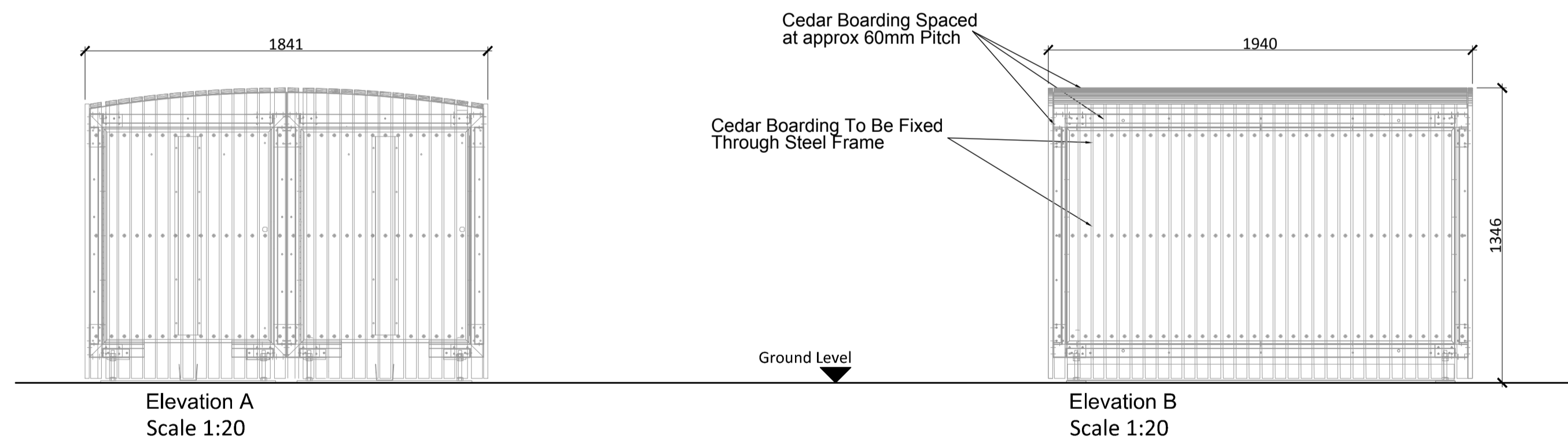
NOTE:
 THIS DRAWING HAS BEEN PRODUCED BY ELECTRONIC MEANS. SHOULD THE SCALE MEASUREMENTS BE TAKEN BY MEANS OTHER THAN ELECTRONIC (e.g. FROM A PRINTED COPY), THE FOLLOWING MUST BE TAKEN INTO CONSIDERATION BEFORE SCALING IS UNDERTAKEN:
 1. ENSURE THAT THE COPY HAS BEEN PRINTED/PLOTTED ON THE STATED SHEET SIZE WITH THE PLOTTING SCALE SET TO A CORRECT RATIO.
 2. ENSURE THAT AN ADEQUATE ALLOWANCE (DEPENDANT ON THE STATED SCALE) IS MADE FOR THE INEVITABLE DISTORTIONS INTRODUCED BY PLOTTING/PRINTING AND COPYING PROCESSES.
 3. MARKED CRITICAL DIMENSIONS ARE TO BE REGARDED AS HAVING PRECEDENCE OVER THE SCALED VALUES.



Cedar Cycle Store by Broxap 4no. Cycles
 Scale 1:20

Notes:

- For location refer to Site Plan drawing No. A(0)101.
- Broxap cedar cycle storage locker or equal.



Elevation A
 Scale 1:20

Elevation B
 Scale 1:20

REV	DESCRIPTION	DATE	INIT	CHKD
8	DRAWING UPDATED AS FOLLOWS: Broxap cedar cycle store indicated following discussions with planners.	13/07/17	CIA	CMR
A	DRAWING UPDATED AS FOLLOWS: Status updated to construction.	29/03/17	CIA	PC
2	DRAWING UPDATED AS FOLLOWS: Cycle store changed	01.02.17	MA	PC
1	DRAWING UPDATED AS FOLLOWS: Status updated to planning	09.01.17	MA	PC



Client
 Rydon
 Project
 Ashton Court, Camden Park Road, Camden
 Title
 Typical External Cycle Store

Scale 1:20@A1 Date 08.11.16 Drawn By MA Checked By CA Project No: K16/0423 Drawing No: A (0)105 Revision B

St Johns House 1A Knoll Rise Orpington Kent BR6 0JX
 01689 888222 orpington@calfordseaden.co.uk
 calfordseaden LLP is a Limited Liability Partnership Registered in England & Wales number OC115838

ORPINGTON | LONDON | BIRMINGHAM | SOUTHEND-ON-SEA | WINCHESTER

calfordseaden.co.uk

CONSTRUCTION