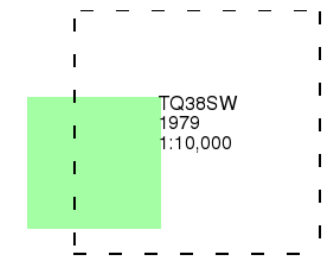


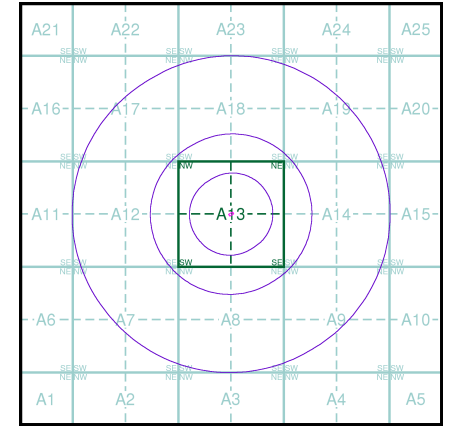
**Ordnance Survey Plan**  
**Published 1979**  
**Source map scale - 1:10,000**

The historical maps shown were reproduced from maps predominantly held at the scale adopted for England, Wales and Scotland in the 1840's. In 1854 the 1:2,500 scale was adopted for mapping urban areas; these maps were used to update the 1:10,560 maps. The published date given therefore is often some years later than the surveyed date. Before 1938, all OS maps were based on the Cassini Projection, with independent surveys of a single county or group of counties, giving rise to significant inaccuracies in outlying areas. In the late 1940's, a Provisional Edition was produced, which updated the 1:10,560 mapping from a number of sources. The maps appear unfinished - with all military camps and other strategic sites removed. These maps were initially overprinted with the National Grid. In 1970, the first 1:10,000 maps were produced using the Transverse Mercator Projection. The revision process continued until recently, with new editions appearing every 10 years or so for urban areas.

**Map Name(s) and Date(s)**



**Historical Map - Slice A**



**Order Details**

Order Number: 116693910\_1\_1  
Customer Ref: J17059  
National Grid Reference: 530370, 181880  
Slice: A  
Site Area (Ha): 0.04  
Search Buffer (m): 1000

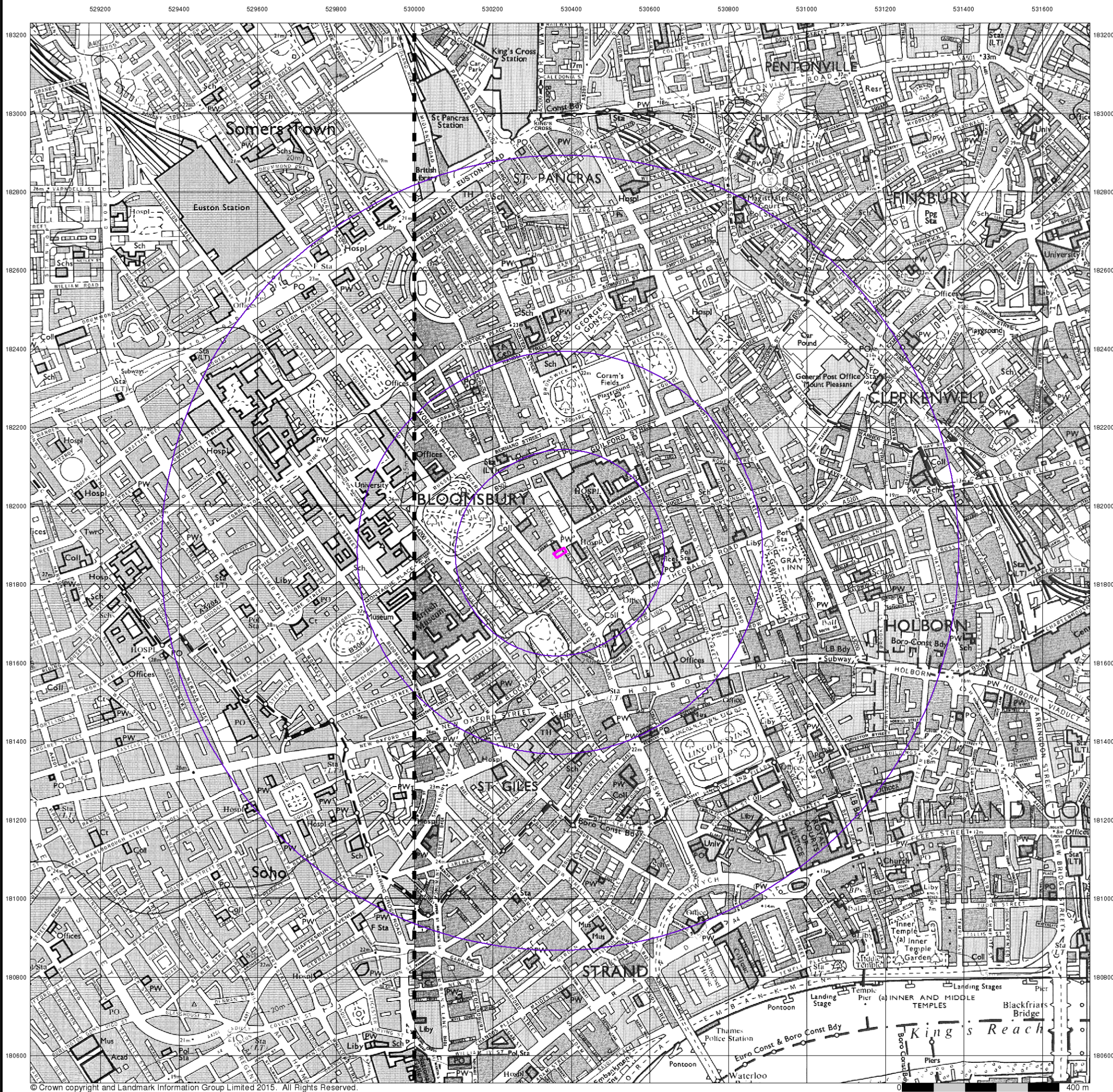
**Site Details**

25, Old Gloucester Street, LONDON, WC1N 3AF



Tel: 0844 844 9952  
Fax: 0844 844 9951  
Web: www.envirocheck.co.uk





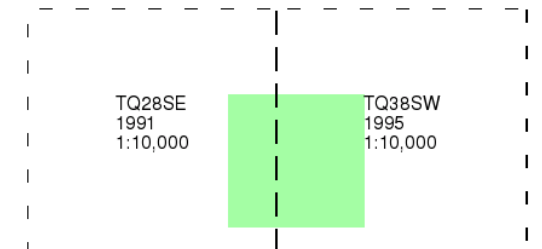
## Ordnance Survey Plan

Published 1991 - 1995

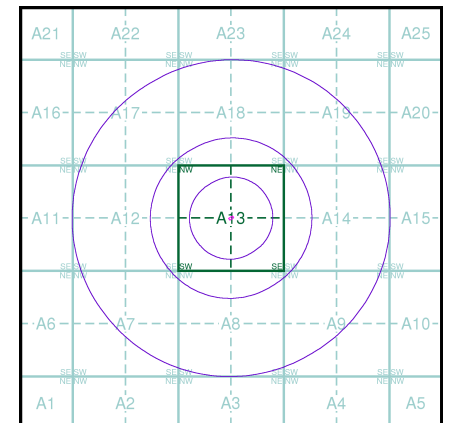
Source map scale - 1:10,000

The historical maps shown were reproduced from maps predominantly held at the scale adopted for England, Wales and Scotland in the 1840's. In 1854 the 1:2,500 scale was adopted for mapping urban areas; these maps were used to update the 1:10,560 maps. The published date given therefore is often some years later than the surveyed date. Before 1938, all OS maps were based on the Cassini Projection, with independent surveys of a single county or group of counties, giving rise to significant inaccuracies in outlying areas. In the late 1940's, a Provisional Edition was produced, which updated the 1:10,560 mapping from a number of sources. The maps appear unfinished - with all military camps and other strategic sites removed. These maps were initially overprinted with the National Grid. In 1970, the first 1:10,000 maps were produced using the Transverse Mercator Projection. The revision process continued until recently, with new editions appearing every 10 years or so for urban areas.

## Map Name(s) and Date(s)



## Historical Map - Slice A



## Order Details

Order Number: 116693910\_1\_1  
Customer Ref: J17059  
National Grid Reference: 530370, 181880  
Slice: A  
Site Area (Ha): 0.04  
Search Buffer (m): 1000

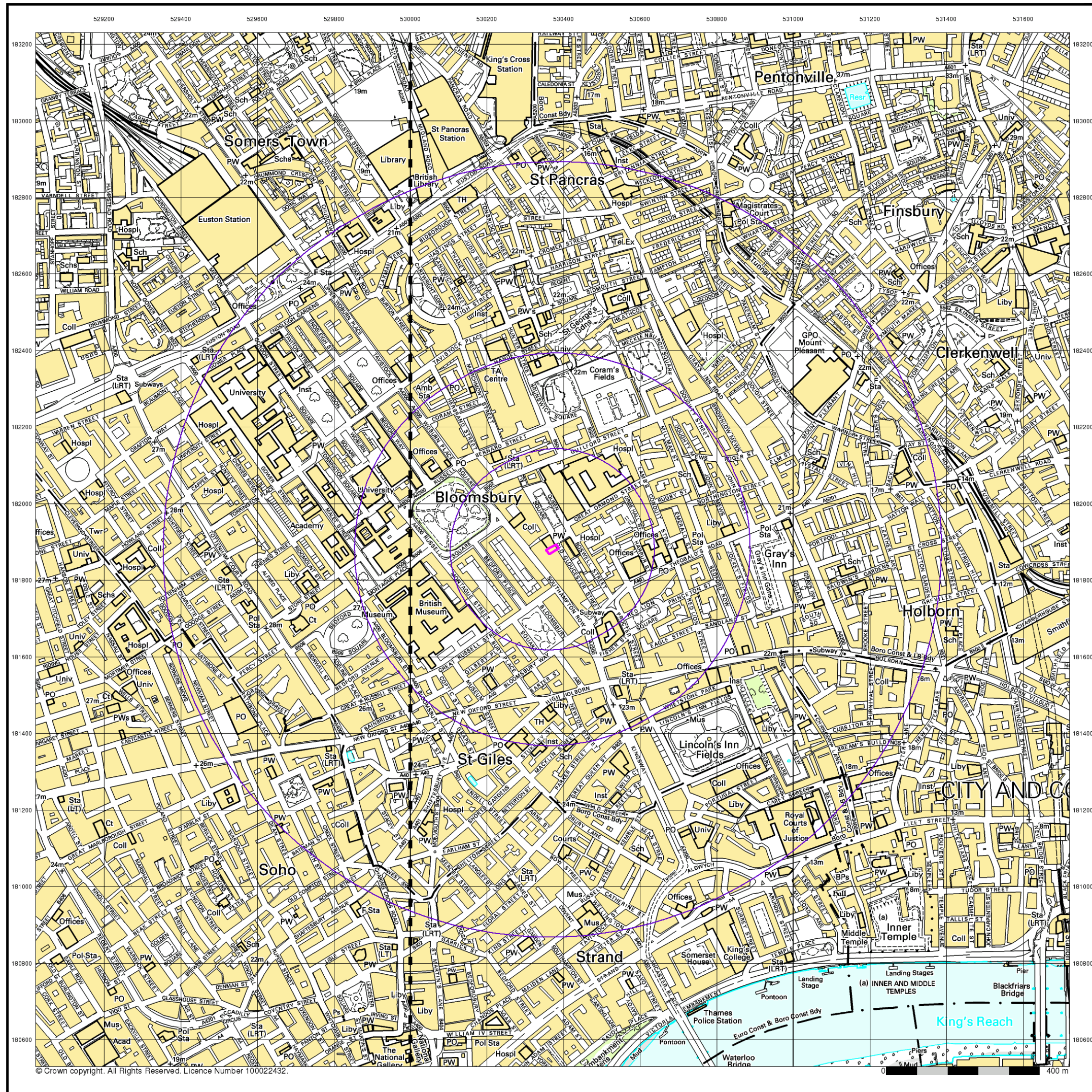
## Site Details

25, Old Gloucester Street, LONDON, WC1N 3AF



Tel: 0844 844 9952  
Fax: 0844 844 9951  
Web: www.envirocheck.co.uk

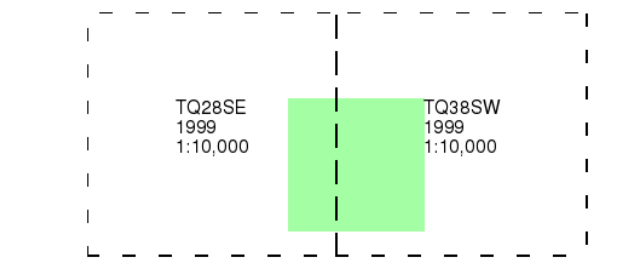




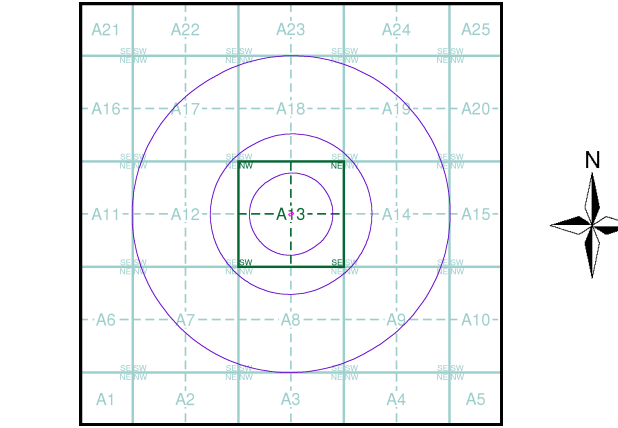
**10k Raster Mapping**  
**Published 1999**  
**Source map scale - 1:10,000**

The historical maps shown were produced from the Ordnance Survey's 1:10,000 colour raster mapping. These maps are derived from Landplan which replaced the old 1:10,000 maps originally published in 1970. The data is highly detailed showing buildings, fences and field boundaries as well as all roads, tracks and paths. Road names are also included together with the relevant road number and classification. Boundary information depiction includes county, unitary authority, district, civil parish and constituency.

**Map Name(s) and Date(s)**



**Historical Map - Slice A**



**Order Details**  
Order Number: 116693910\_1\_1  
Customer Ref: J17059  
National Grid Reference: 530370, 181880  
Slice: A  
Site Area (Ha): 0.04  
Search Buffer (m): 1000

**Site Details**  
25, Old Gloucester Street, LONDON, WC1N 3AF

