

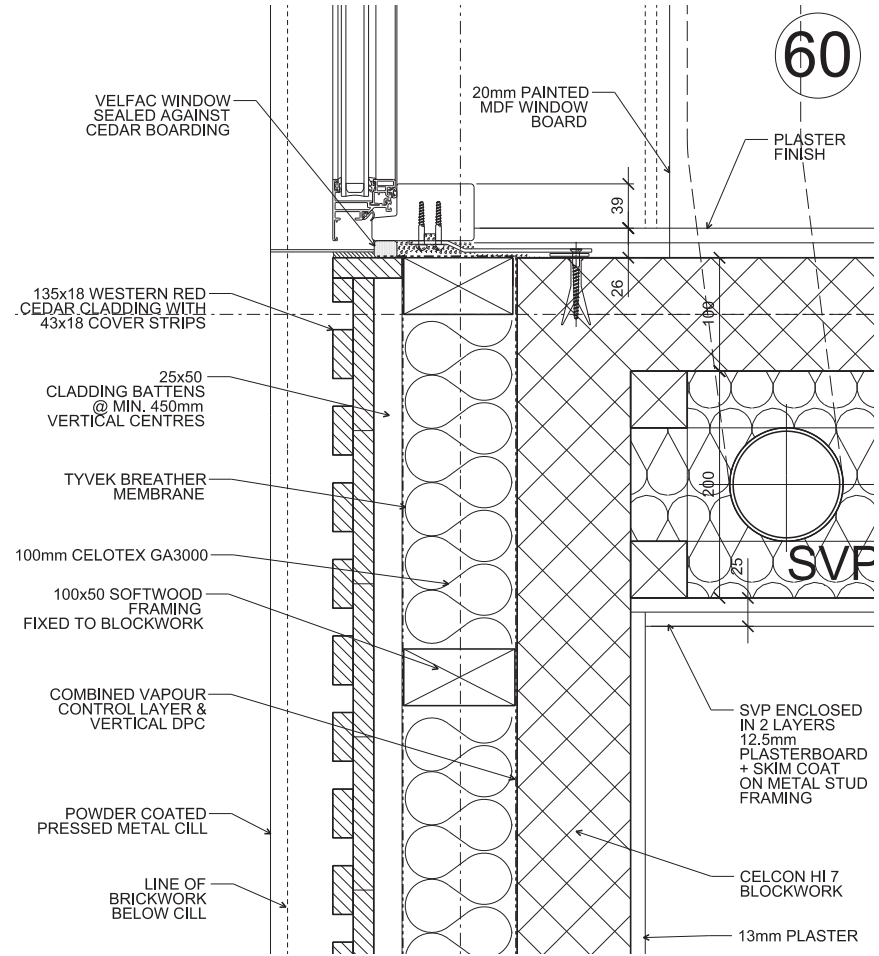
# SUPPORTING INFORMATION FOR RELEASE OF PLANNING CONDITION 7 (2016/6238/P)

## TIMBER CLADDING

The timber cladding proposed to be used on the extension will be to match the existing timber cladding.



Photograph of sample panel of western red cedar-cladding taken on site.



Technical drawing showing typical detail through timber cladding

SUPPORTING INFORMATION FOR RELEASE OF  
PLANNING CONDITION 7 (2016/6238/P)

RED METAL CLADDING



Photograph of red metal cladding taken on site shown next to the brick sample matched with the existing brickwork.