

1 BEDROOM FLAT (FLAT No 7)
831VALP07 & 831VALE07

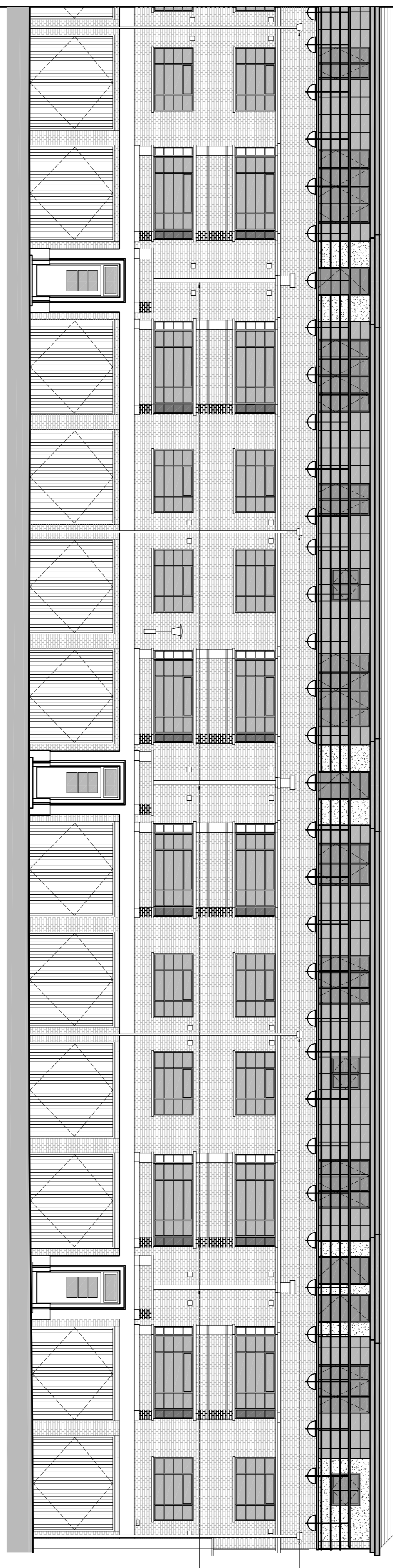
2 BEDROOM FLAT (FLAT No 6)
831VALP06 & 831VALE06

2 BEDROOM FLAT (FLAT No 5)
831VALP05 & 831VALE05

3 BEDROOM FLAT (FLAT No 4)
831VALP04 & 831VALE04

EXISTING WINDOWS RETAINED AND RAISED WITH NEW LINTEL TO SE DETAIL WITH NEW BRICKWORK TO EXACTLY MATCH EXISTING AROUND.

KEY REAR ELEVATION EAST



3 BEDROOM FLAT (FLAT No 4)
831VALP04 & 831VALE04

2 BEDROOM FLAT (FLAT No 5)
831VALP05 & 831VALE05

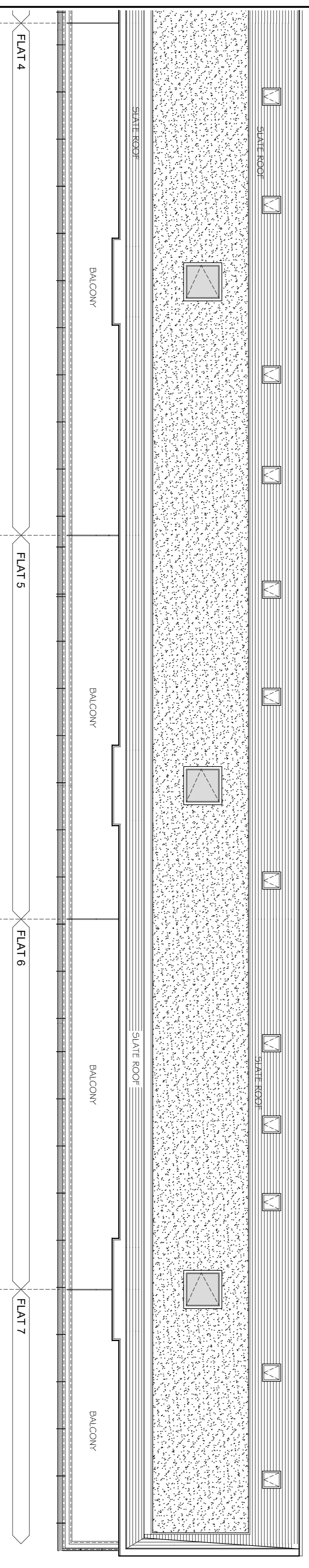
2 BEDROOM FLAT (FLAT No 6)
831VALP06 & 831VALE06

1 BEDROOM FLAT (FLAT No 7)
831VALP07 & 831VALE07

NEW RAIN WATER HOPPERS SERVING NEW DOWNPIPES TO CONNECT INTO EXISTING STORM WATER DRAINAGE IN GOWER MEWS

NEW DECORATIVE FEATURE PANEL ABOVE EXISTING FLAT ENTRANCES

KEY FRONT ELEVATION EAST



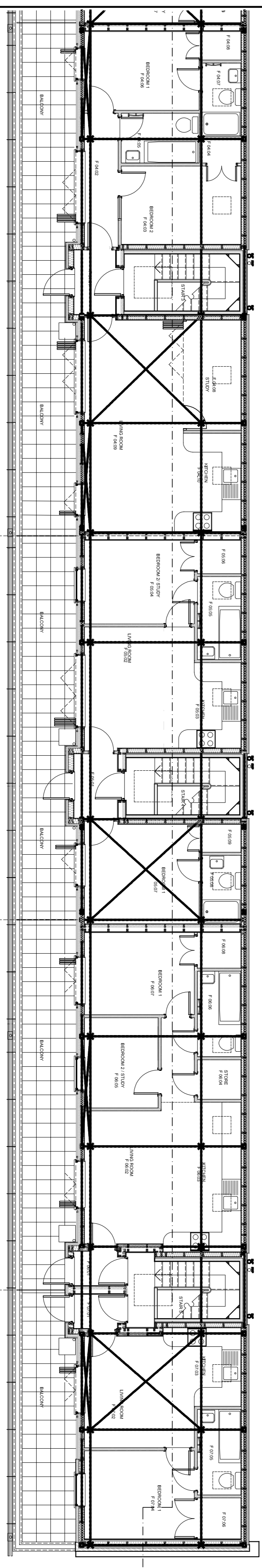
FLAT 4

FLAT 5

FLAT 6

FLAT 7

KEY ROOF PLAN EAST



3 BEDROOM FLAT (FLAT No 4)
831VALP04 & 831VALE04

2 BEDROOM FLAT (FLAT No 5)
831VALP05 & 831VALE05

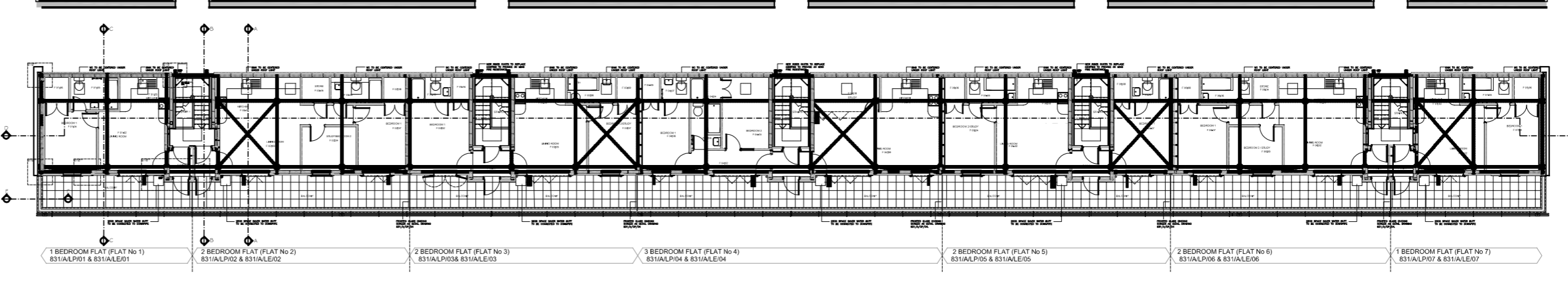
2 BEDROOM FLAT (FLAT No 6)
831VALP06 & 831VALE06

831VALP07 & 831VALE07

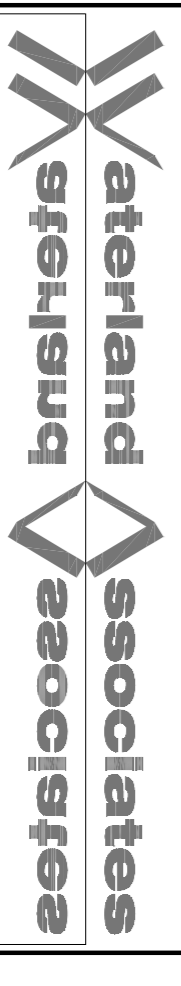
KEY THIRD FLOOR PLAN EAST

NOTES:

KEY PLAN



STATUS - CONSTRUCTION



PROJECT: GOWER MEWS MANSIONS

DRAWING: KEY PLANS EAST

SCALE: 1:100 @A1

DATE: AUG 11 W/A

NOTE: DO NOT SCALE OFF THIS DRAWING. DIMENSIONS ARE GIVEN IN METERS OR FEET AND INCHES AS SHOWN.

DRAWN BY: 831 A/LP/00 / KEY-2

NOTE: IF DRAWING PRINTED @ A3: SCALE TO BE: 1:200

WATERLAND HOUSE, WEST STREET, OUNDLE, PE8 4EJ,
T: 01832 270123, F: 01832 270345, E: arch@waterland.co.uk
ARCHITECTS W W W WATERLAND.CO.UK