



10-11 King's Mews

London WC1N 2EN

Details pursuant of conditions following
grant of Full Planning Permission
2012/6315/P

July 2017

Rev P04

FRONT ELEVATION

CONDITION 3



Materials

1. London yellow stock facing brick
2. Steel windows and doors - Crittall profile
3. Clear structural glass balustrade
4. Panel garage doors
5. Back painted glass spandrel panel
6. Metal frame glazed conservatory
7. Movement Joint

Front elevation along King's Mews
Scale: NTS



1. Traditional London yellow stock, Flemish bond



2. Steel frame windows and doors. Crittall profile. RAL 7016



3. Clear structural glass balustrade to match adjacent properties. No top handrail bar



4. Panel 'up and over' secure garage doors. RAL 7016

REAR ELEVATION

CONDITION 3



Rear elevation
Scale: NTS

Materials

1. London yellow stock facing brick
2. Steel windows and doors - Crittall profile
3. Clear structural glass balustrade
4. Panel garage doors
5. Back painted glass spandrel panel
6. Metal frame glazed conservatory



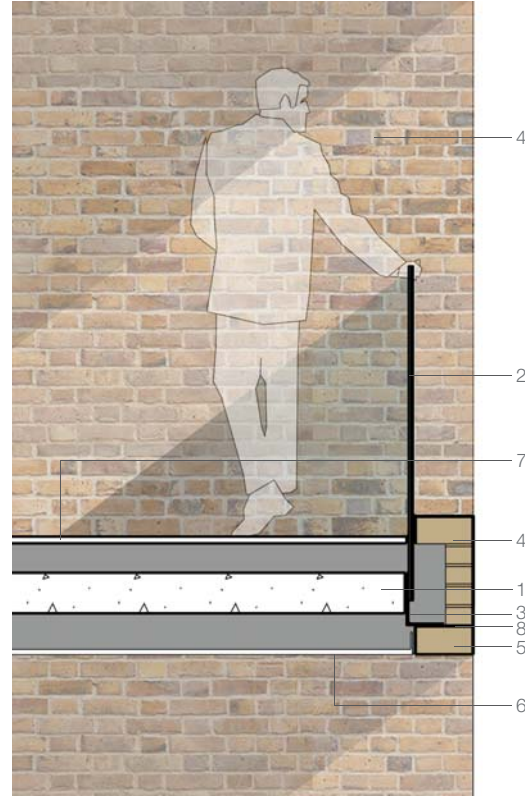
6. Steel frame glazing Crittall profile. RAL 7016

SECTION DETAILS

CONDITION 4

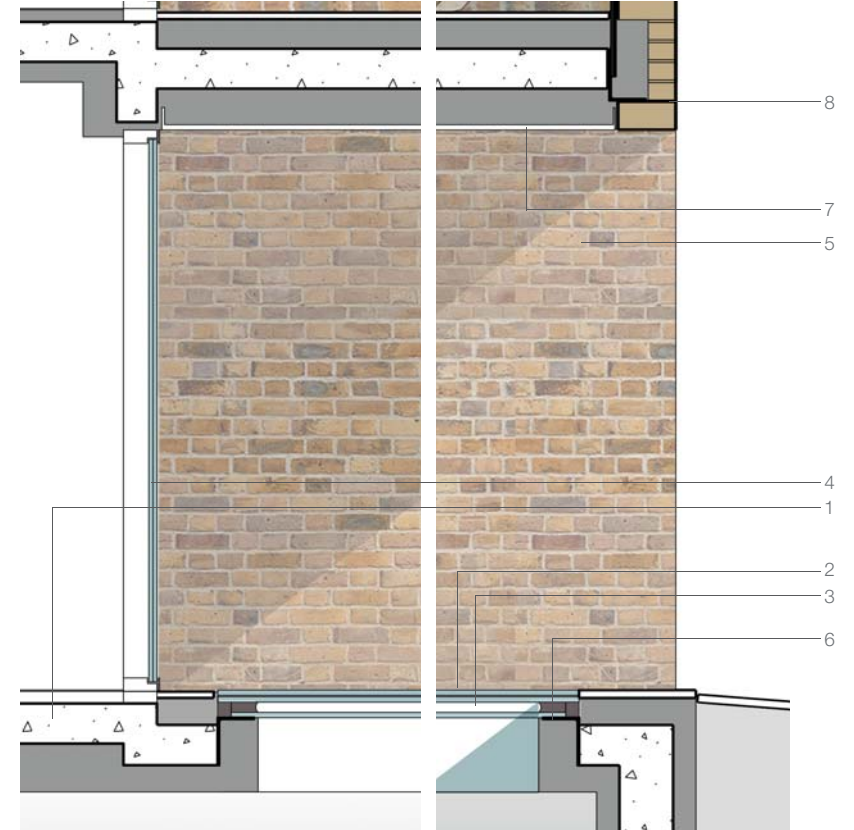


Section-Elevation
Scale: NTS



A. Glass balustrade detail
Scale 1:20 @ A3

1. Insulated RC slab
2. Structural glass balustrade fixed to slab edge
3. Brick supporting shelf angle
4. London yellow stock Flemish Bond facing brick reveals
5. Suspended brick soffit course
6. PPC aluminium soffit panel. RAL 9007 grey
7. Level access balcony decking
8. Movement Joint



B. Fenestration and pavement light detail
Scale 1:20 @ A3

1. Insulated RC slab
2. Structural glass flat pavement light top section- flush with top of pavement
3. Roof-light argon filled double glazing
4. 37/54mm wide PPC Steel window and door frames - full height. RAL 7016
5. London yellow stock Flemish Bond facing brick reveals
6. Glass support angle fixed to RC slab
7. PPC aluminium soffit panel. RAL 9007 grey
8. Movement Joint

MATERIAL SAMPLES

CONDITION 4

The following material samples are proposed for the scheme:

1. Window & Doors: Crittall Profile, RAL 7016 (anthracite grey).
2. Brick: Tigra Multi supplied by Traditional Brick & Stone, proposed bond: Flemish.
3. Mortar: Light Brown Medium, supplied by Cemtex Mortars, proposed pointing: Wandsworth Smudge.
4. Balustrade Sample: 20mm clear toughened, laminated structural glass, with concealed fixings.



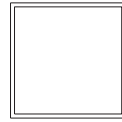
WINDOW/DOORS

CONDITION 4

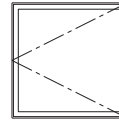
External windows and doors are proposed to be Crittall W20 profile, as shown in the following images and details.



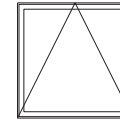
PRODUCT RANGE



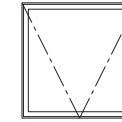
FIXED LIGHT



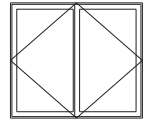
SIDE HUNG
OPEN OUT OR
OPEN IN



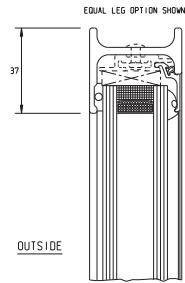
TOP HUNG
OPEN OUT



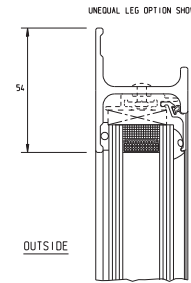
BOTTOM HUNG
OPEN IN



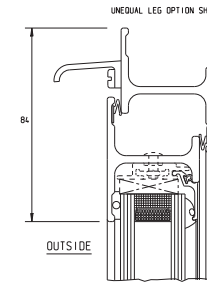
FRENCH CASEMENT
OPEN OUT OR OPEN IN



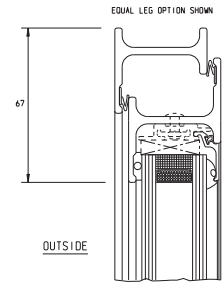
OUTSIDE



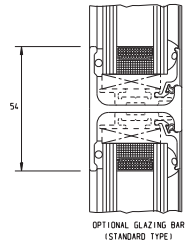
OUTSIDE



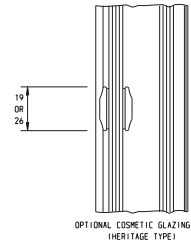
OUTSIDE



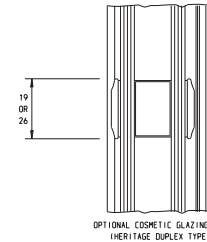
OUTSIDE



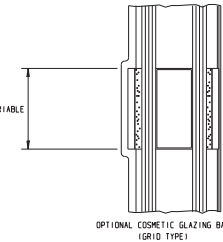
OPTIONAL COSMETIC GLAZING BAR
(STANDARD TYPE)



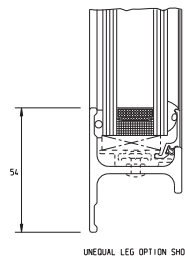
OPTIONAL COSMETIC GLAZING BAR
(HERITAGE DUPLEX TYPE)



OPTIONAL COSMETIC GLAZING BAR
(HERITAGE DUPLEX TYPE)

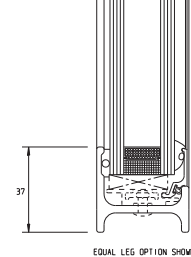


OPTIONAL COSMETIC GLAZING BAR
(GRID TYPE)



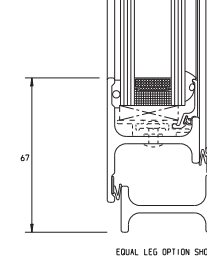
UNEQUAL LEG OPTION SHOWN

FIXED LIGHT*



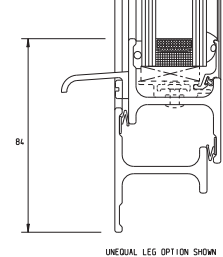
EQUAL LEG OPTION SHOWN

FIXED LIGHT*



EQUAL LEG OPTION SHOWN

OPEN OUT VENT*



UNEQUAL LEG OPTION SHOWN

OPEN IN VENT*

JAMB DETAILS SIMILAR TO HEAD AND SILL



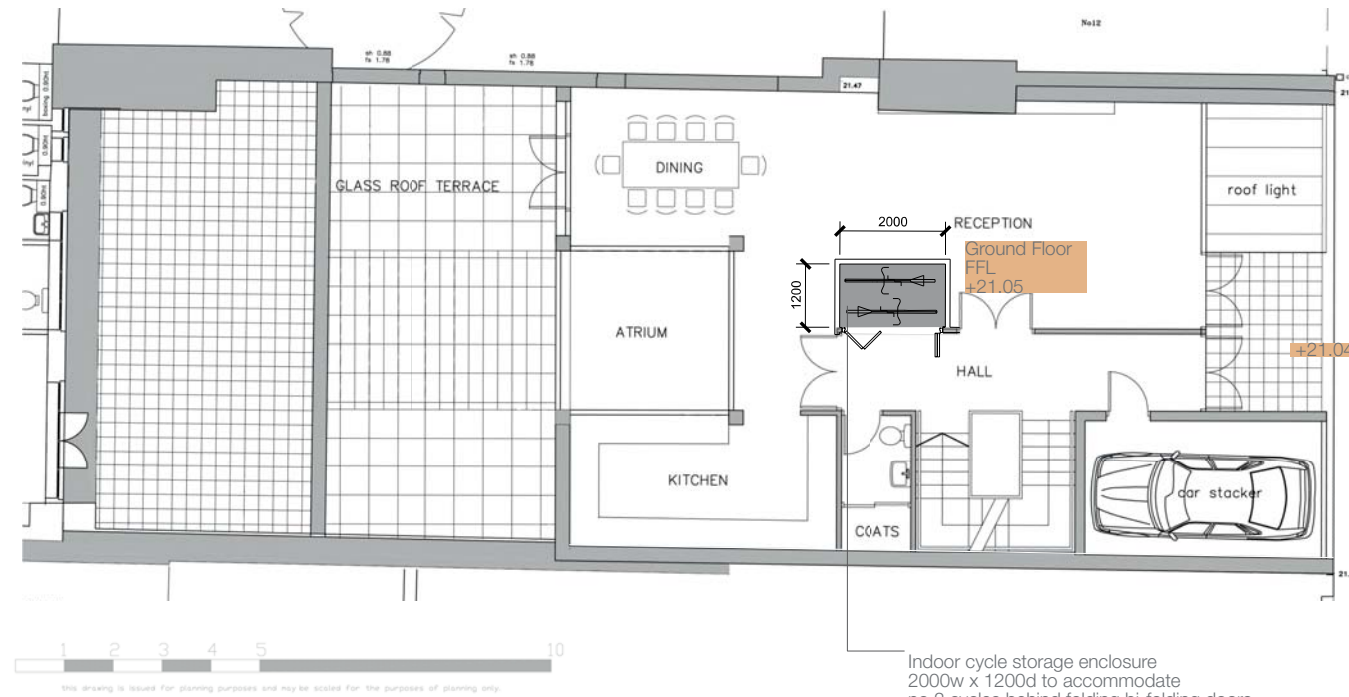
CRITTALL® IS A REGISTERED TRADE MARK OF CRITTALL WINDOWS LIMITED

CRITTALL® CORPORATE™ 2000 WINDOW FRAME PROFILES

REF. C2000 01/16

GROUND FLOOR PLAN - CYCLE STORAGE

CONDITION 7



Ground Floor Plan
Scale 1:100 @ A3

KING'S MEWS



Above

Examples of indoors cycle storage at floor level