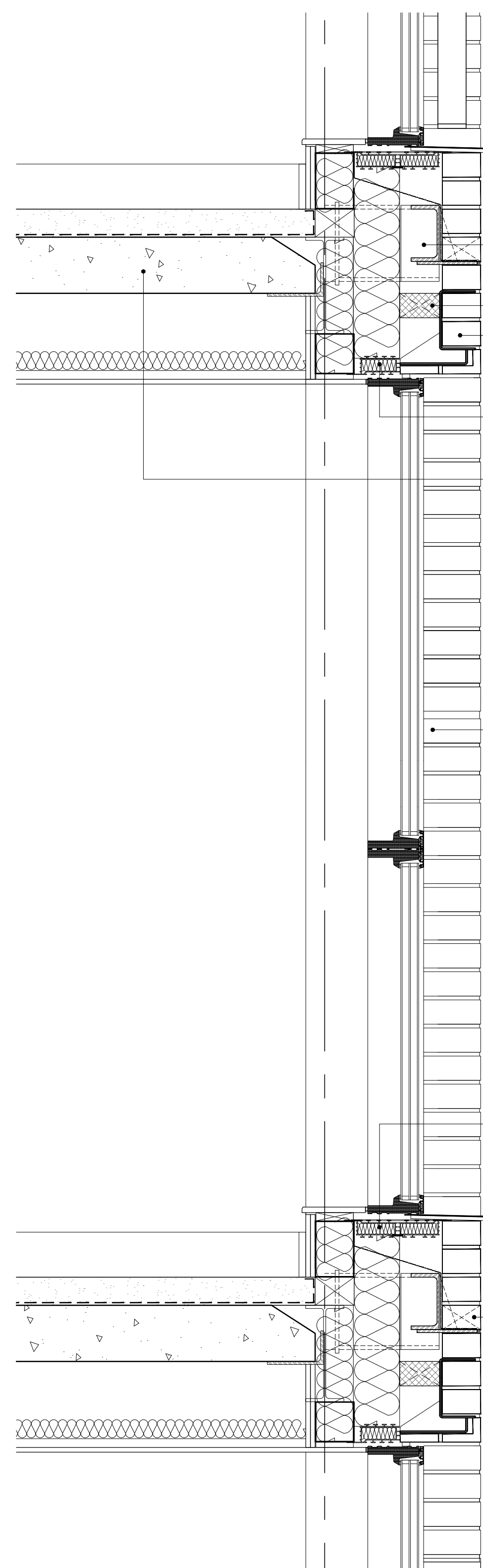


Orientation

Wall Type Legend

Key



- Outer leaf support detail to engineer's details with thermal break to column fixing
- Rockwool cavity barrier (60 mins) to BS 476: Part 20
Nexus 65 x 215 with stretcher bond brick faced lintel by Ancon or similar approved to engineer's details
- Thermabate cavity closers with jointing strip by main contractor.
- Separating Floor:
Robust Detail E-FC-14: 10mm nominal finishes zone; 65mm (min) thick sand/cement screed (nom. 80kg/m² mass per unit area); on 6mm IsoRubber layer with IsoEdge flanking strip resilient layer to isolate floor from walls. Ensure IsoRubber resilient layer is laid over entire floor with overlapped joints of 50mm sealed with tape and overlaps with Isoedge flanking strip; on 150mm deep precast hollowcore floor units (min mass per unit area 300kg/m²) to engineer's details with all joints grouted; 12.5mm plasterboard ceiling (8kg/m² min mass per unit area) on proprietary MF ceiling system providing 150mm minimum void with 50mm (min.) mineral wool quilt insulation 10 kg/m³ (min.).
- Velfac In window / door system (RAL 8040 - Dark Bronze). Factory made glazed units to give max. u-value of 1.40W/m²k. (as specified by window manufacturer). Glazing in the following locations to be toughened safety glass to BS6206, 1981: between FFL & 800mm high; and between FFL & 1500mm high in doors or side panels. Glazed units to be designed in accordance with the Noise Report prepared by MoirHaands (3229/07/16) and Energy Strategy Report prepared by King Shaw Associates.
- Splayed brickwork reveal
- Thermabate cavity closers with jointing strip by main contractor.
- Velfac aluminium sill (RAL 8040 - Dark Bronze) and clip sealed on silicone at interface with window frame and bedded on PU foam by installer
- Proprietary PVCu perpend weep holes at 450mm max. centres and DPC Cavity tray with stop ends to rise minimum 150mm
- Cavity wall construction 415mm o/a thickness comprising: 102.5mm thick facing brickwork outer leaf; 237.5mm wide cavity with 100mm Celotex FR5000 partial-fill cavity wall insulation (or similar approved); SFS Infil Walling to specialist's design (Nom. 100mm metal studs) with 50mm multi purpose insulation slab between studs and lined internally with 2 layers of 15mm Gyproc WallBoard with skim finish.

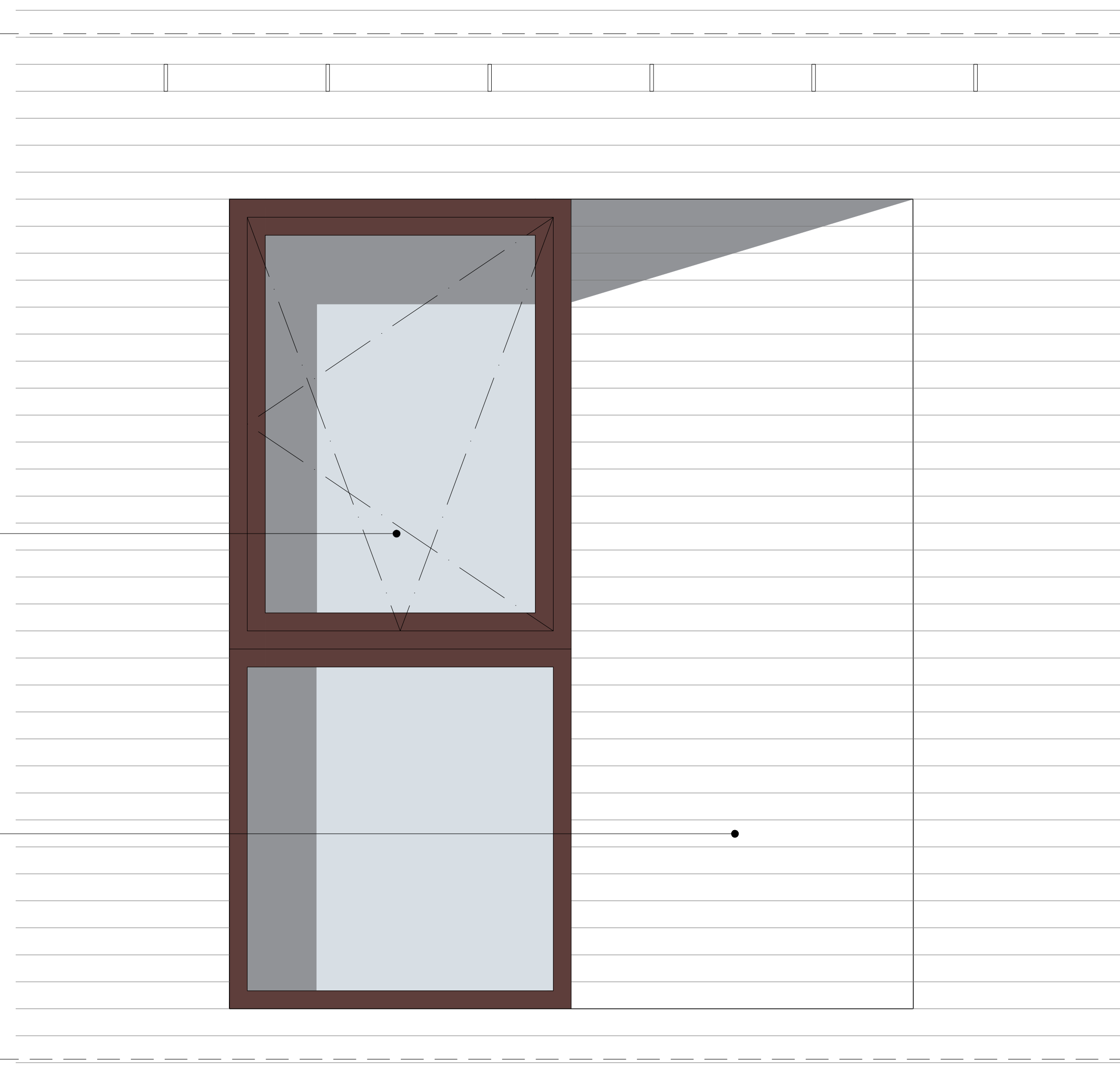
FFL

FFL

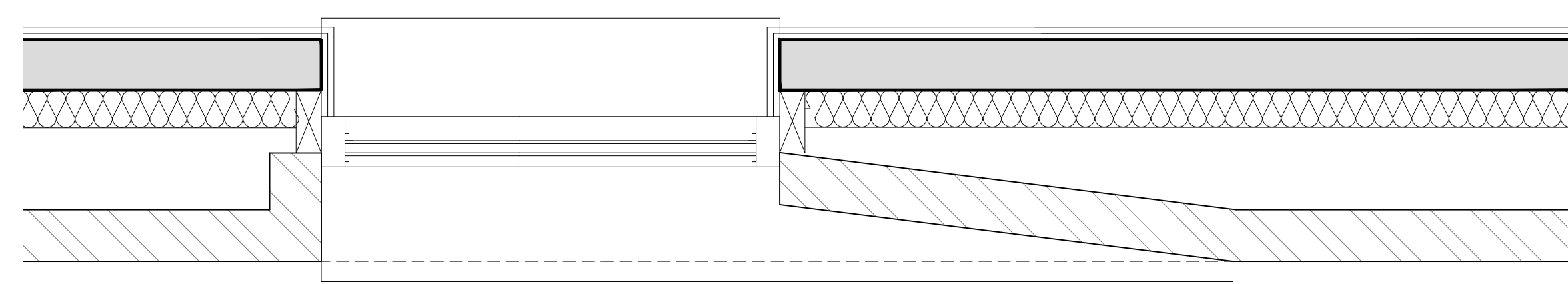
FFL

FFL

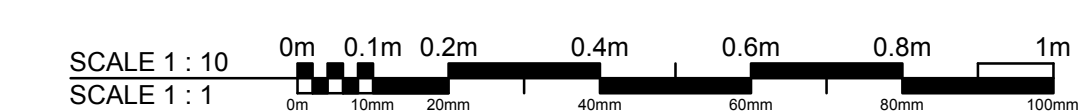
01 Cross Section Thru Window
1:10



02 Elevation
1:10



03 Plan
1:10



Rev	Description	Date
P00	Tender issue	07.04.17



1 Dudley Court North, Waterfront East
Level Street, Brierley Hill
West Midlands, DY5 1XP
T: 01384 571330 F: 01384 575644
E: incdesign@incdesign.net

Client
AVAMORE LIMITED

Project
3 MALDEN ROAD, KENTISH TOWN
LONDON, NW5 3HS

Drawing Title
GENERAL DETAILS - SHEET 6
WINDOW WITH SPLAYED REVEAL DETAILS

Project No.	Drawing No.	Revision
2572	INC-MA[30]006	P00
Scale	Date	Drawn by
1:10@A1	07.04.17	CJ

TENDER