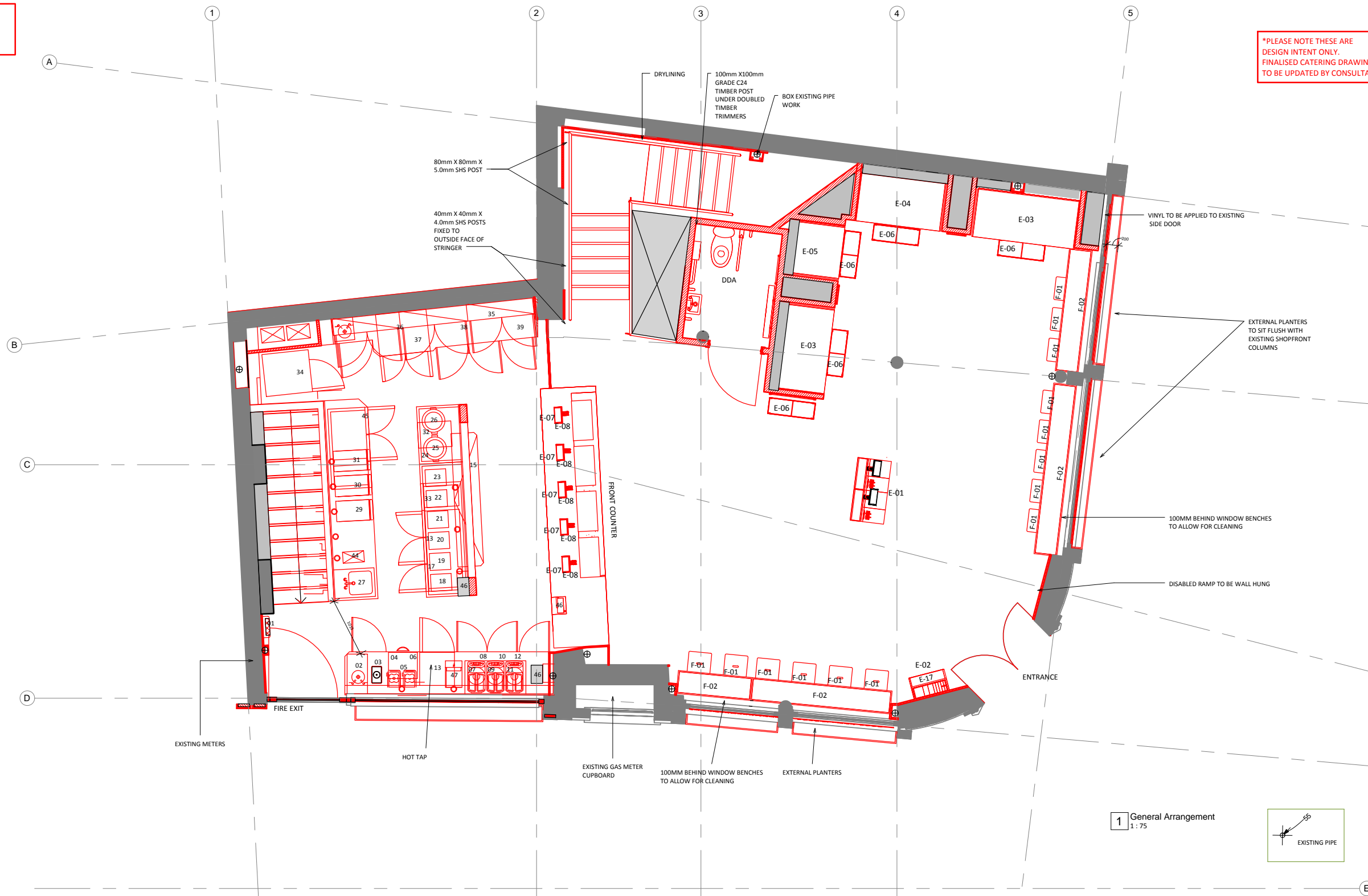
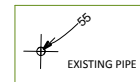


**NOTE:**  
REFER TO STRUCTURAL  
ENGINEERS DRAWING FOR  
STRUCTURAL DETAILS

**\*PLEASE NOTE THESE ARE  
DESIGN INTENT ONLY.  
FINALISED CATERING DRAWINGS  
TO BE UPDATED BY CONSULTANT**



**1** General Arrangement  
1 : 75



**General notes:**  
Do Not Scale from this drawing;  
Contractor to carry out full setting out prior to start of works and notify any discrepancies to the Architect for clarification;  
All works to be strictly in accordance with local authority legislations, and/or similar governing bodies;  
All works to be strictly in accordance with CDM Regulations (Health and Safety);

rev	date	description
D	19/06/17	Staircase amendment. Changes made to DDA. Updates made to front counter. Change of self service position. Updated kitchen layout on GF based on JAP Catering drawings received 16/06/17. Amendments made to existing pipe positions based on LP site measurements. Dry lining on back wall in Basement, brought in line with GF (3600mm). IBS Screens added as per LP sketch. One condiment unit on RHS of entrance door removed as per JL request. 100 mm gap added behind GF counters/benches for cleaning purposes. Round table in basement made into 2 seater to the RHS of stairs.
C	15/06/17	Amendments to the front counter.
B	14/06/17	Amendment to wall finishes. Amendments made to staircase. Bulkhead Sizes and colour amended. Reception Counter Design changed to reflect new design. Crisp bins replaced with new mesh design. Toilet doors changed to Farrow & Ball Ground Blue. Rain pipe positioned to reflect site dimensions by JL.
A	12/06/17	Revised BOH layout in GF & Basement

Copyright of this drawing is reserved and is issued on condition that it is not reproduced in part or on whole without written consent unless otherwise assigned.

All dimensions to be verified on site by the Contractor prior to commencement of work. Any discrepancies not brought to our immediate attention shall be deemed to be the responsibility of the contractor/fabricator.

**ghost** ARCHITECTURE  
7 Devonhurst Place  
Heathfield Terrace  
London  
W4 4JD  
Phone: +44 (0)20 8742 3330  
Fax: +44 (0)20 8742 0744  
[www.ghostprojects.com](http://www.ghostprojects.com)

**SUMMARY  
COVERS 14**

**EQUIPMENT LEGEND**

01 - Fly killer	17 - Mobile bench c/w antidrip surround, 3No. cable ties (for induction hobs) and undershelf	34 - Convection oven (on stand)
02 - Bench c/w chamfered corner, mdf support under worktop, wash-hand basin, pitcher rinser, localised antidrip, 1No. cable tidy for blenders, 3No. cutouts for coffee machines, part void under (for item 05) and cupboards under	18 - Induction hob (by others)	35 - Wall cupboard
03 - Pitcher rinser	19 - Induction hob (by others)	36 - Wall cupboard
04 - Blender	20 - Induction hob (by others)	37 - 2 door undercounter freezer
05 - Ice Machine	21 - Induction hob (by others)	38 - Wall cupboard
06 - Blender	22 - Induction hob (by others)	39 - Shaped bench c/w wash-hand basin, localised antidrip, mdf support under worktop, void under (for item 37 and cupboards under
07 - Coffee machine (by others)	23 - Induction hob (by others)	40 - Multi tier refrigerated display unit
08 - Water filter (for item 07)(by others)	24 - Mobile low level bench c/w antidrip surround and undershelf	41 - Multi tier heated display unit
09 - Coffee machine (by others)	25 - Rice cooker (by others)	42 - Multi tier refrigerated display unit
10 - Water filter (for item 09)(by others)	26 - Rice cooker (by others)	43 - Multi tier refrigerated display unit
11 - Coffee machine (by others)	27 - Bench c/w additional support under worktop, single bowl sink, localised antidrip, 5No. cable ties, part void under (for item 33) and part shelving under	44 - Brewer
12 - Water filter (for item 11)(by others)	28 - Merrychef E25 Oven	45 - Single door undercounter bottle cooler
13 - Single door undercounter milk fridge	29 - Merrychef E25 Oven	46 - IBS Screen with Telescopic Arm
14 - Shoppfitted till counter (by others)	30 - Merrychef E25 Oven	47 - Hot Water Tap
15 - Ambient 2 tier pass shelf	31 - Merrychef E25 Oven	
16 - Heated 2 tier pass shelf	32 - Thermodyne Counter top hot hold unit	
	33 - 3 Door counter fridge	

**EQUIPMENT LEGEND**

ITEM	DESCRIPTION	QTY	SUPPLIER	ITEM	DESCRIPTION	QTY	SUPPLIER
E-01	Self pay station	2	TBC	E-06	Crisp Bins	5	TBC
E-02	Condiment unit	1	TBC	E-07	Tills	5	TBC
E-03	1800mm Drinks Fridge	2	TBC	E-08	Card Machine	5	TBC
E-04	1500mm Drinks Fridge	1	TBC				
E-05	900mm Hot Langer	1	TBC				

**FURNITURE LEGEND**

ITEM	DESCRIPTION	QUANTITY	SUPPLIER
F-01	PARLOUR STOOL PRODUCT CODE: 1120-0051 (UPHOLSTERED SEAT PAD - AT ADDITIONAL COST)	14	UHS <a href="http://www.uhs-group.com">www.uhs-group.com</a> +39 06 6220 5009
F-02	Customer communal Table Counter top - Timber Oak	4	TBC

**CLIENT:**  
Vitesse

**PROJECT:**  
Vitesse  
74, Chancery Lane, London

**DRAWING TITLE:**  
Proposed - General Arrangement

**SCALE:**  
As indicated@A3

**DATE:**  
23/06/17

**PROJECT AND DWG NO:**  
217025 -A2.1

**FILE NAME:**  
217025\_Chancery Lane\_Concept\_DWG\_030517

**DRAWN:**  
OS

**CHECKED:**  
LP

**ISSUE TYPE:**  
PLANNING

**REV:**  
-D-

