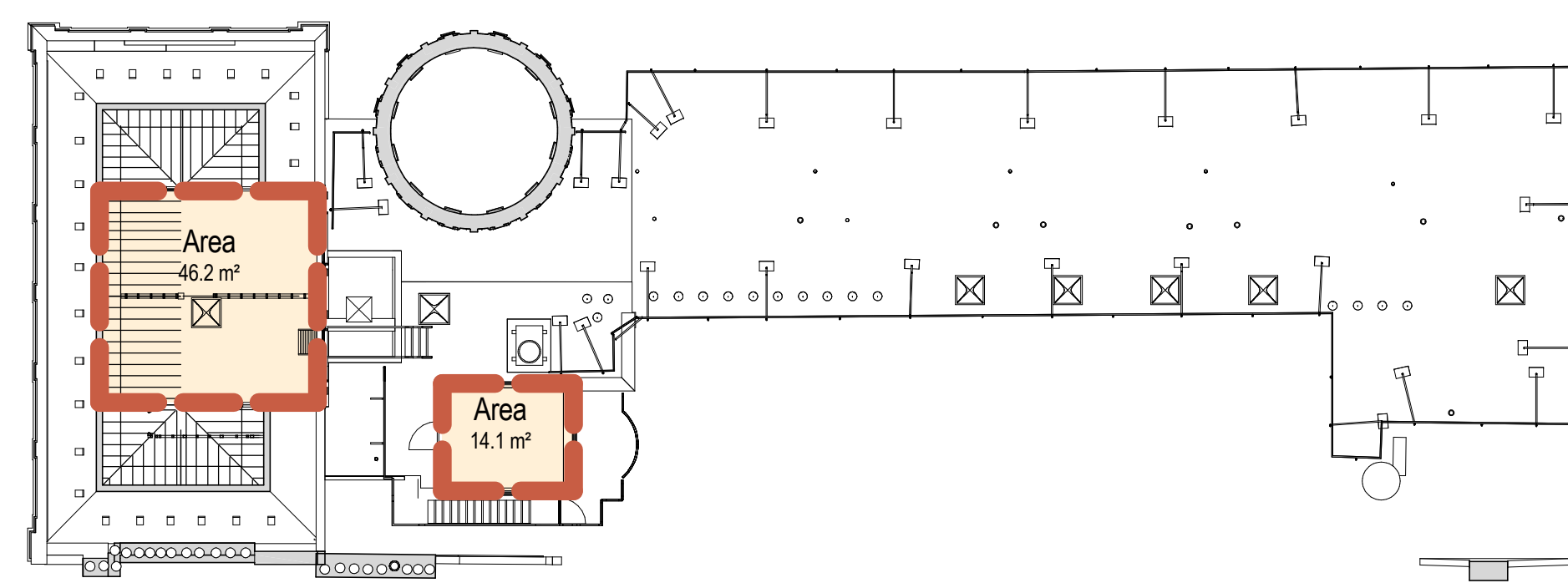
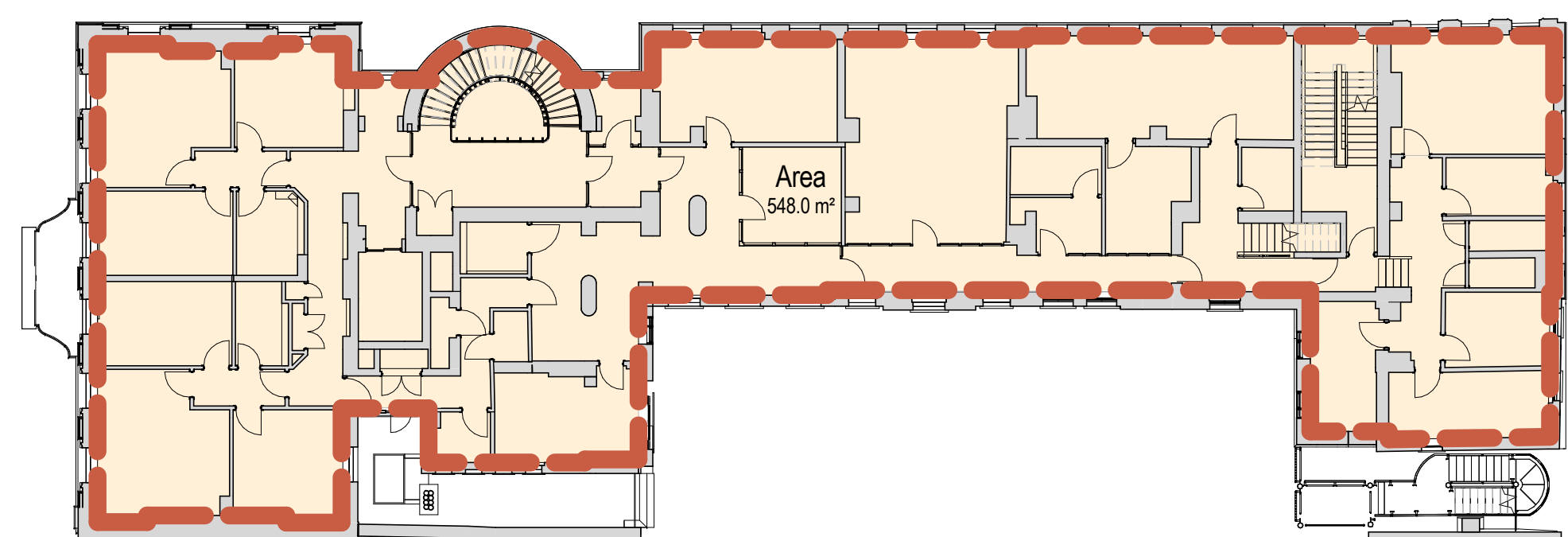


**Key**  
 - - - Gross Internal Area (GIA)

GIA (per floor)	Area (m <sup>2</sup> )	Area (ft <sup>2</sup> )
L1 - Basement	753.0 m <sup>2</sup>	8,105 ft <sup>2</sup>
L2 - Ground	561.7 m <sup>2</sup>	6,046 ft <sup>2</sup>
L3 - First	548.0 m <sup>2</sup>	5,899 ft <sup>2</sup>
L3MS - First South Mez	84.1 m <sup>2</sup>	905 ft <sup>2</sup>
L4 - Second	543.0 m <sup>2</sup>	5,845 ft <sup>2</sup>
L5 - Third	543.5 m <sup>2</sup>	5,850 ft <sup>2</sup>
L6 - Roof	60.3 m <sup>2</sup>	649 ft <sup>2</sup>
<b>Grand total</b>	<b>3,093.7 m<sup>2</sup></b>	<b>33,300 ft<sup>2</sup></b>

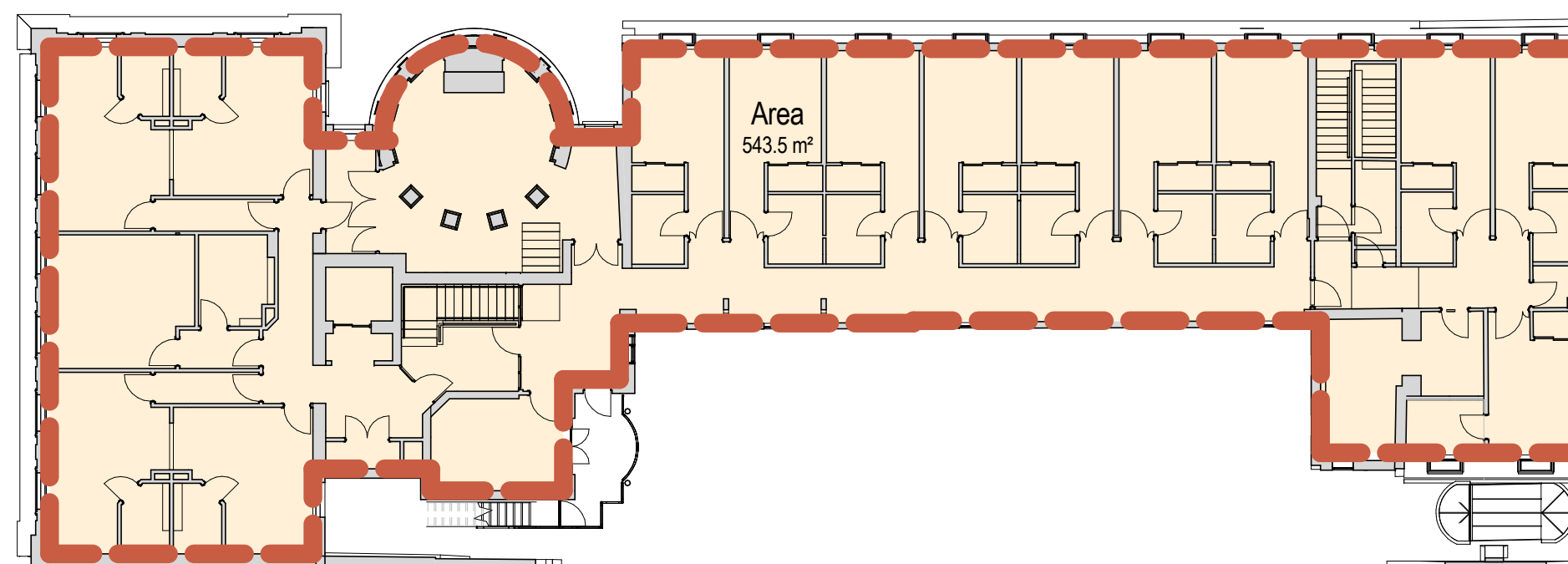
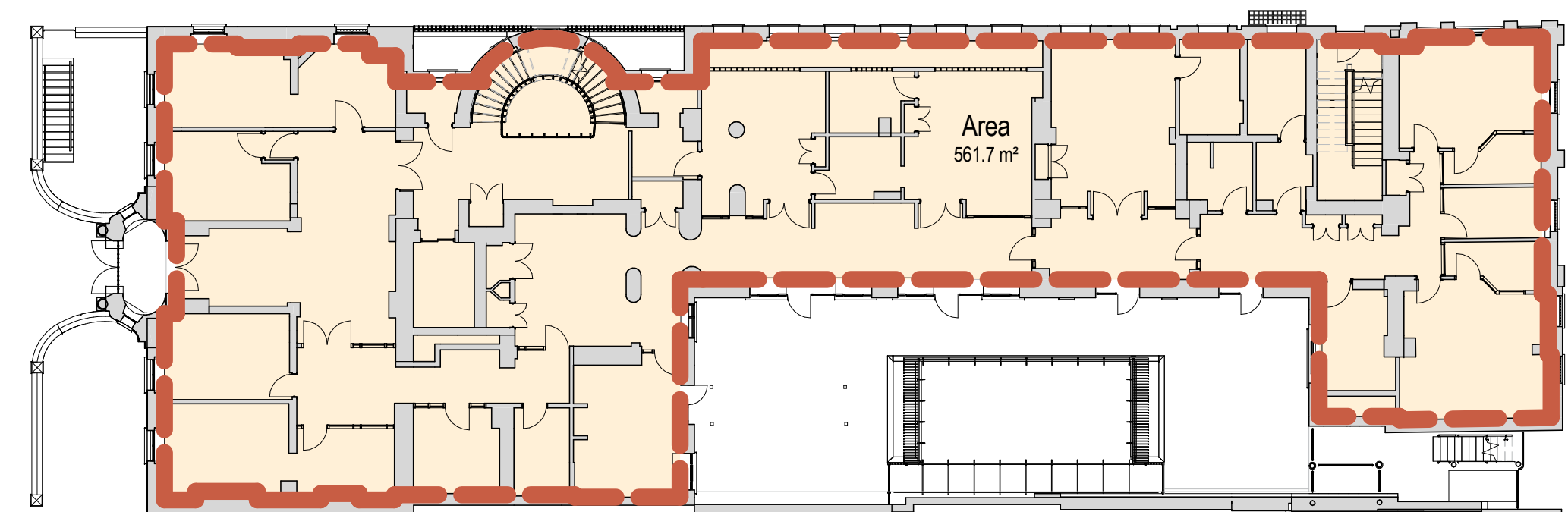
**Notes**  
 1 Gross Internal Area is the area of a building measured to the internal face of the perimeter walls at each floor level.  
 2  
 3

7  
2031  
**First Floor Mezzanine**  
 1 : 200



2  
2031  
**First Floor**  
 1 : 200

5  
2031  
**Roof**  
 1 : 200



1  
2031  
**Ground Floor**  
 1 : 200

4  
2031  
**Third Floor**  
 1 : 200

Rev	Date	Details/ Amended by	Sign
A4	10.07.17	PLANNING SUBMISSION / LM	GT
A3	05.07.17	Planning Submission for Client Approval / LM / GV	GT
A2	06.04.17	Pre-planning application to Camden / CL	LM
A1	30.03.17	Pre-planning application / CL	LM

Rev Date Details/ Amended by Sign

**sonnemanntoon architects**

Quality House  
 6-9 Quality Court  
 Chancery Lane  
 London WC2A 1HP  
 United Kingdom  
 Tel: +44 (0)20 7580 8881  
 email: info@st-arch.co.uk  
 web: www.st-arch.co.uk  
 © This drawing is copyright

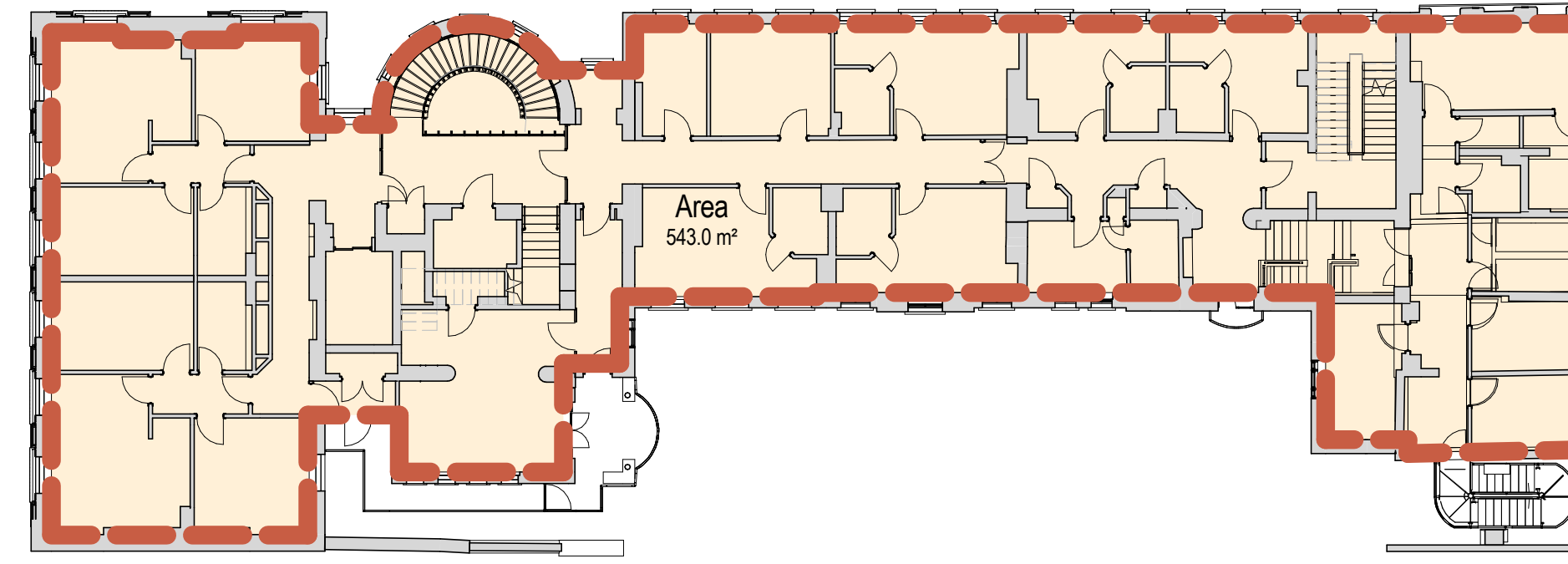
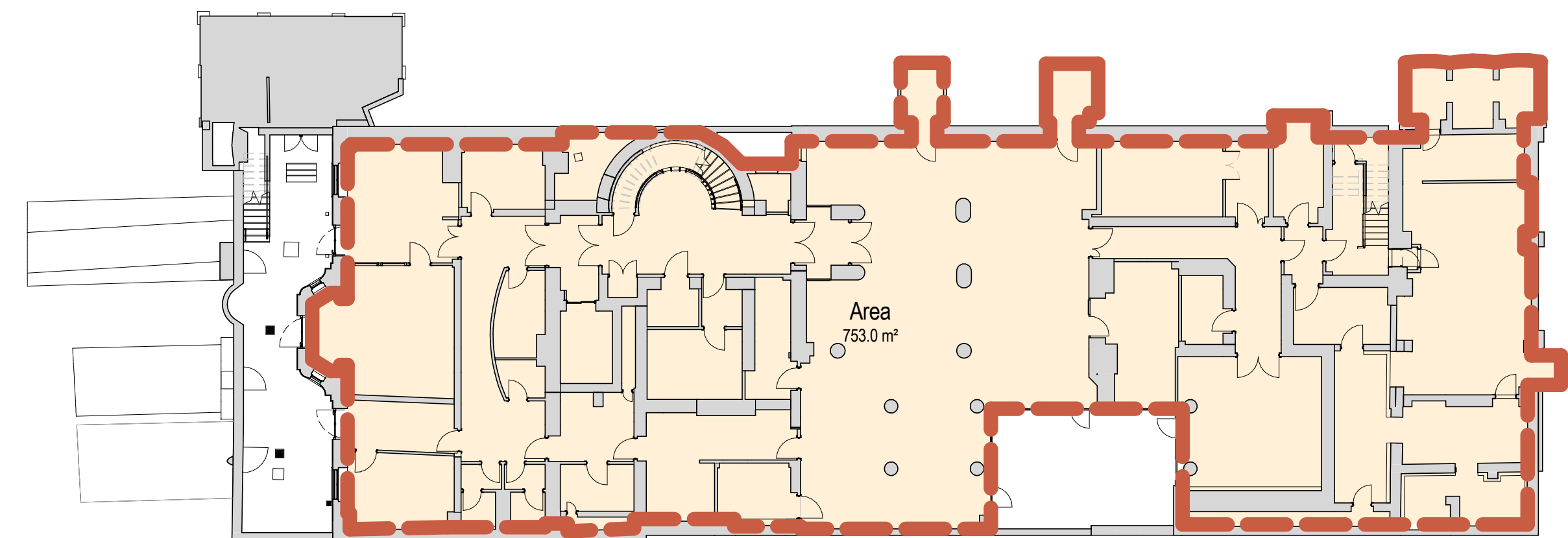
Do not scale this drawing. Architect to be informed of all discrepancies in dimensions. Contractor to check all dimensions on site.

Project title  
**ITALIAN HOSPITAL**

Drawing title  
**EXISTING PLANS GIA**

Scale	Status	Revision
1: 50 @A1	APPROVAL	A4
1: 100 @A3		

Drawing number  
**1615-ST-Q1-ZZ-DR-A-2031**



6  
2031  
**Basement**  
 1 : 200

3  
2031  
**Second Floor**  
 1 : 200

