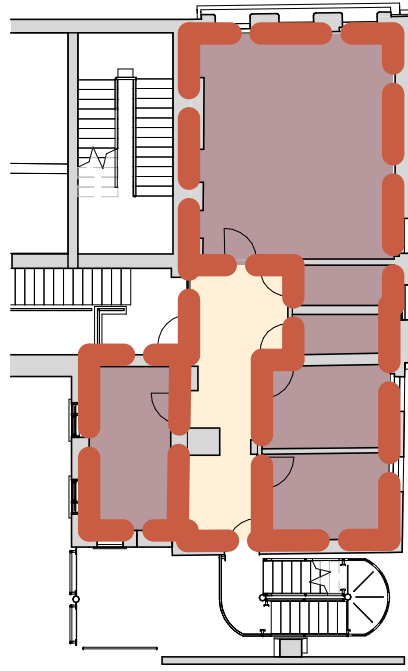
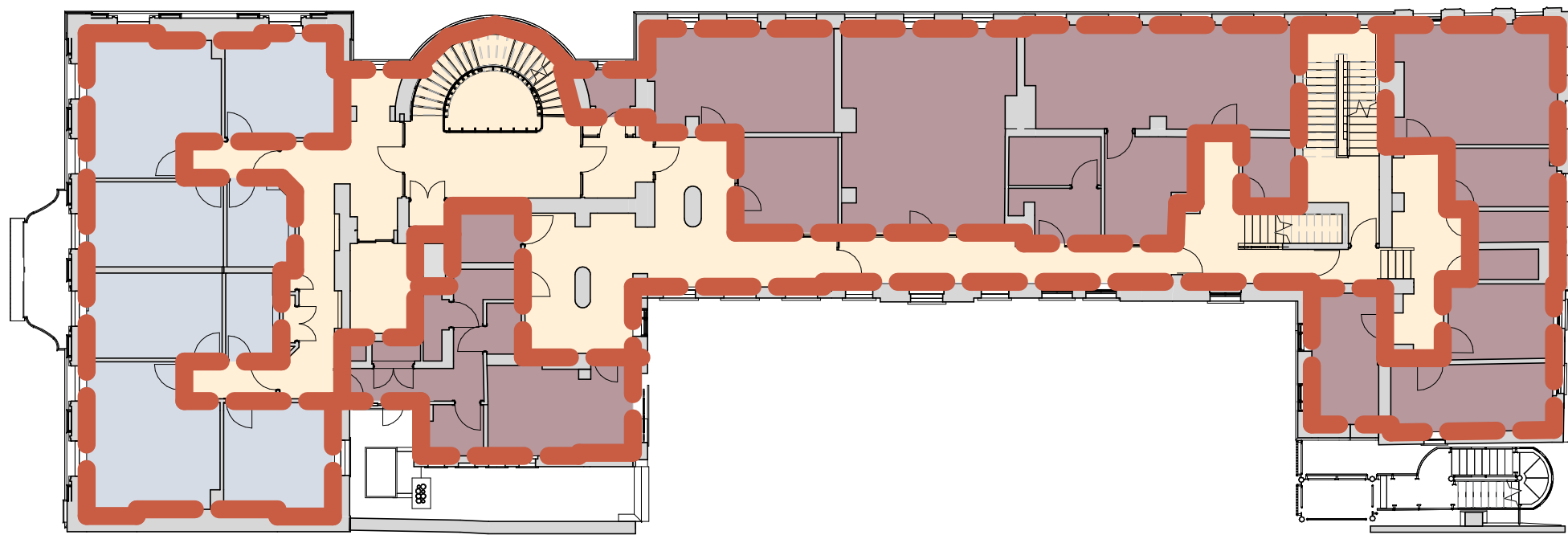


Notes	
1	Gross Internal Area is the area of a building measured to the internal face of the perimeter walls at each floor level.
2	
3	

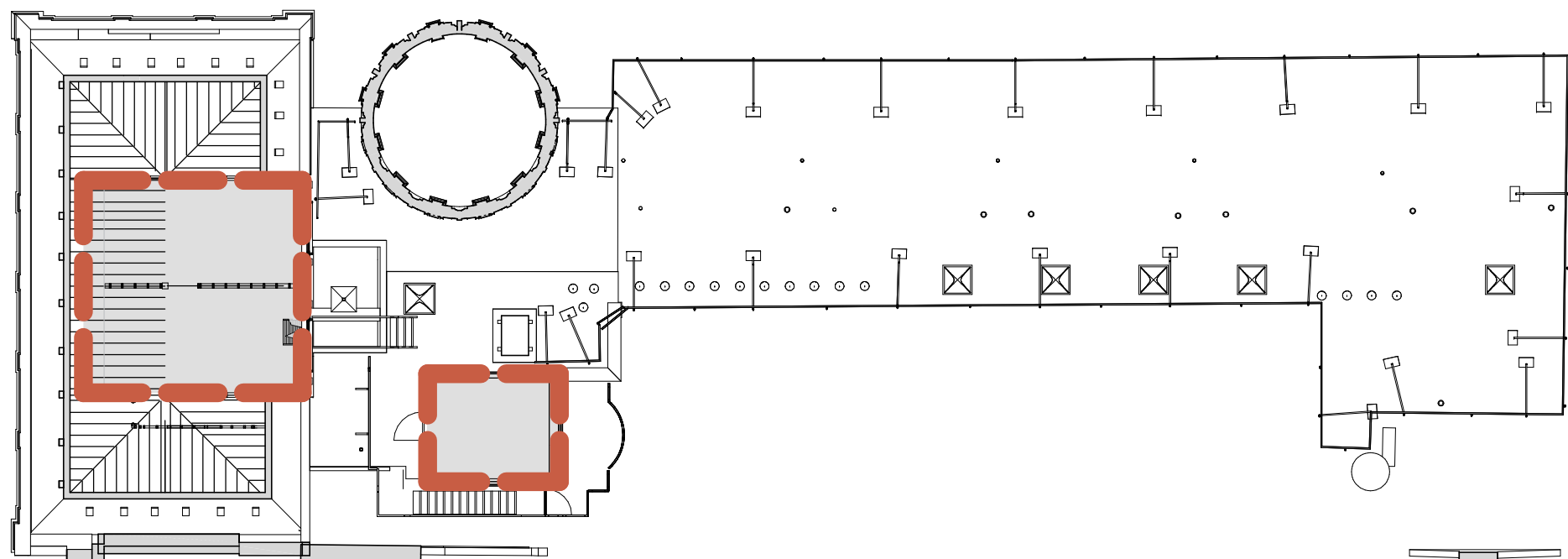
Name	Area
Chapel	46.1 m²
Circulation	1,211.2 m²
Nursery	324.9 m²
Office	483.0 m²
Parents Accommodation	786.4 m²
Plant	242.1 m²
	3,093.7 m²



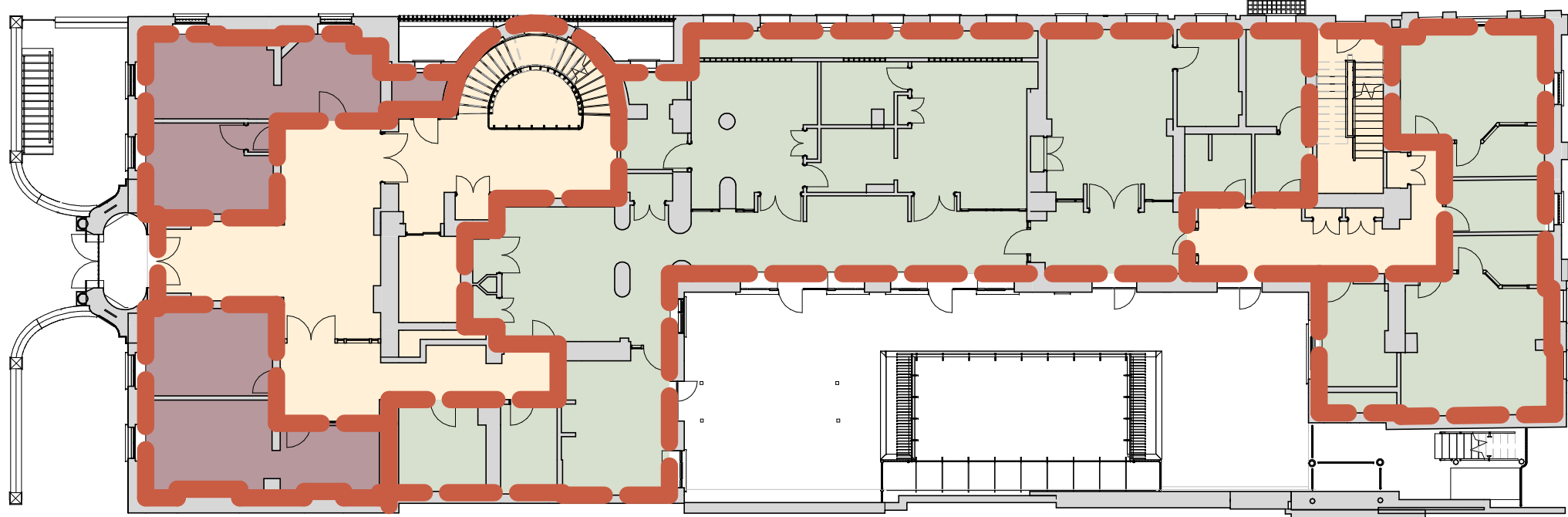
3
2047
L3MS - First South Mez
1 : 200



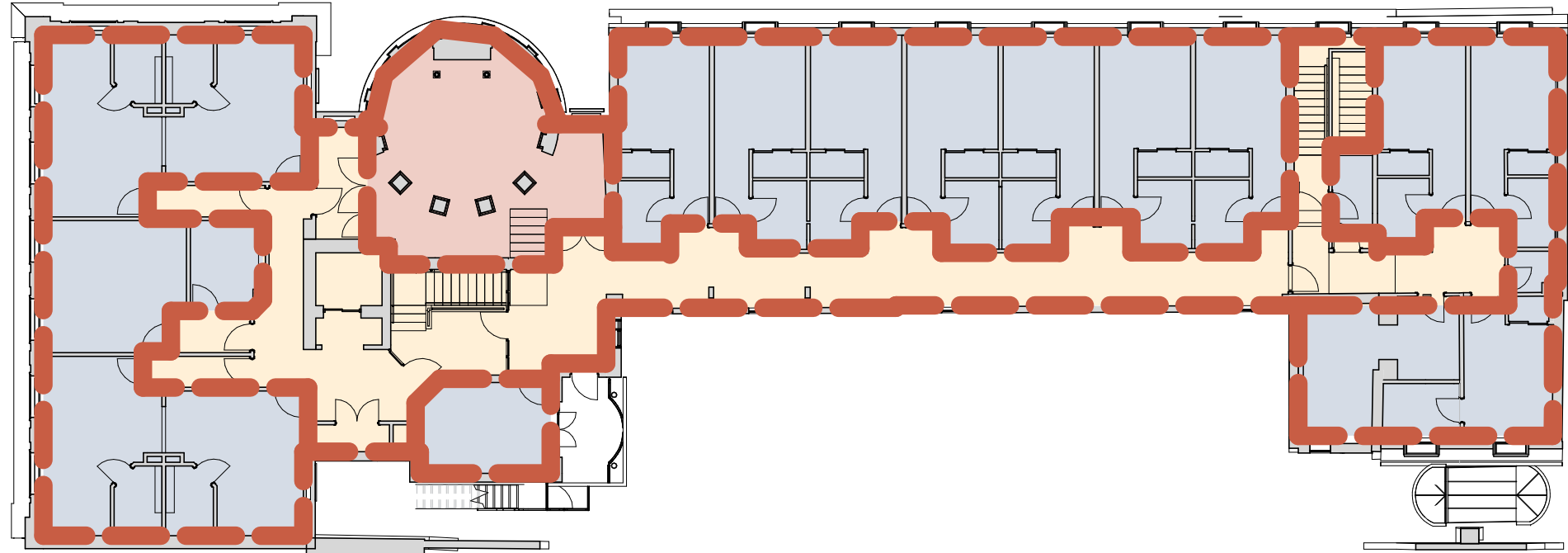
4
2047
L3 - First
1 : 200



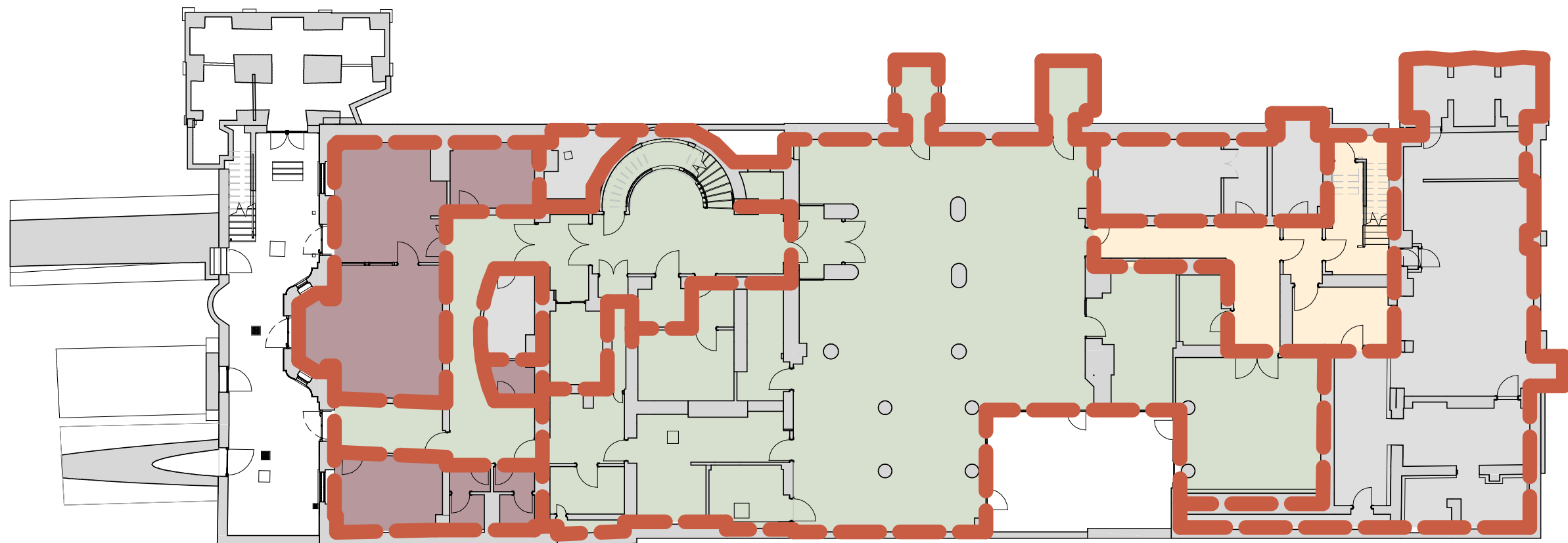
7
2047
L6 - Roof
1 : 200



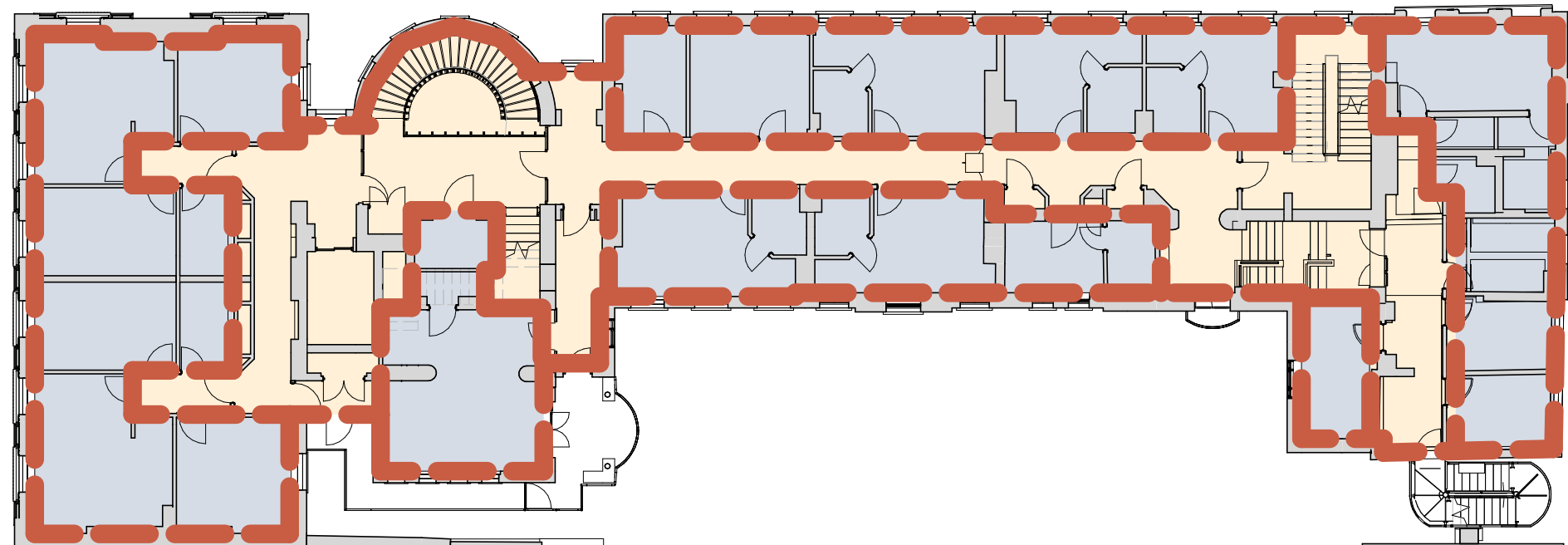
2
2047
L2 - Ground
1 : 200



6
2047
L5 - Third
1 : 200



1
2047
L1 - Basement
1 : 200



5
2047
L4 - Second
1 : 200

- Chapel
- Circulation
- Nursery
- Office
- Parents Accommodation
- Plant

A4	10.07.17	PLANNING SUBMISSION / LM	GT
----	----------	--------------------------	----

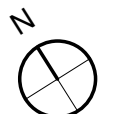
Rev	Date	Details/ Amended by	Sign
-----	------	---------------------	------

sonnemanntoon
architects

Quality House
6-9 Quality Court
Chancery Lane
London WC2A 1HP
United Kingdom
tel: +44 (0)20 7580 8881
email: info@st-arch.co.uk
web: www.st-arch.co.uk
© This drawing is copyright

Do not scale this drawing. Architect to be informed of all discrepancies in dimensions. Contractor to check all dimensions on site.

Project title
ITALIAN HOSPITAL
Drawing title
EXISTING PLANS
Existing Departments - GIA
Scale Status Revision
1: 50 @A1 APPROVAL A4
1: 100 @A3
Drawing number
1615-ST-Q1-ZZ-DR-A-2047



0 1 2 5m