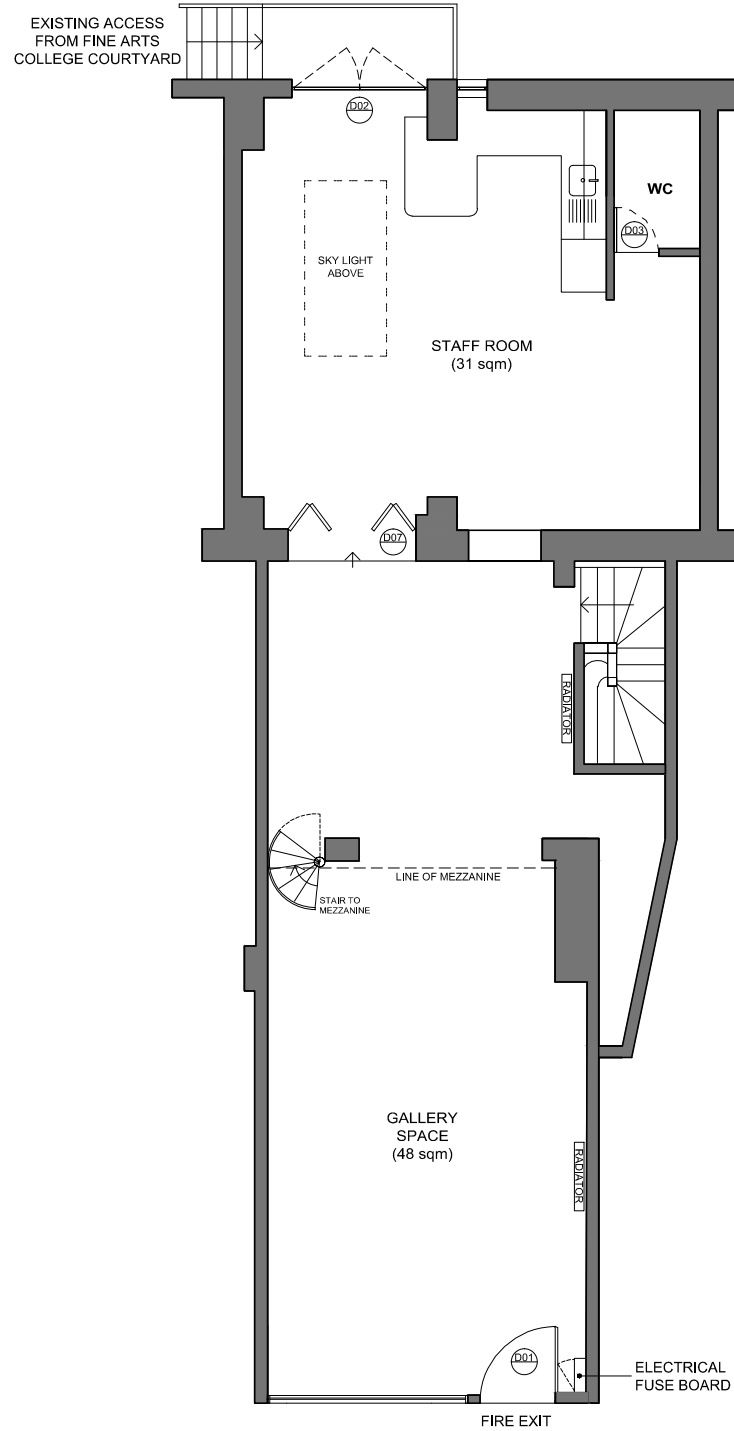
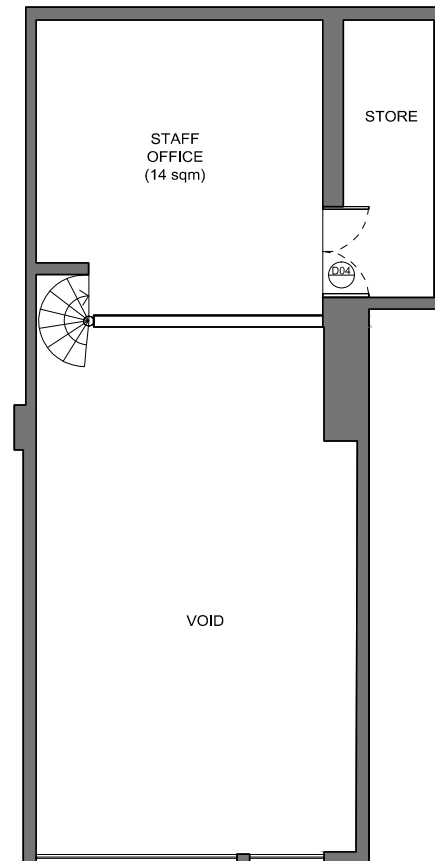


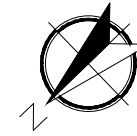
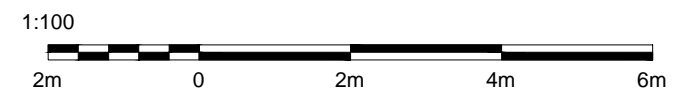
1 BASEMENT LEVEL



2 GROUND FLOOR LEVEL



3 MEZZANINE LEVEL



GENERAL NOTES

1. THIS DRAWING IS THE PROPERTY OF LXA, PO BOX NO: 283639, DUBAI. IT IS FORBIDDEN TO PRODUCE ITS CONTENTS IN ANY FORM, EXCEPT FOR THE INTENDED PURPOSE
2. THIS DRAWING IS NOT TO BE SCALED. THE DIMENSIONS ARE IN MILLIMETERS UNLESS OTHERWISE SPECIFIED
3. ANY DISCREPANCIES ARE TO BE BROUGHT TO THE ATTN OF LXA AND RESOLVED BEFORE THE COMMENCEMENT OF ANY WORK
4. THIS DRAWING IS TO BE READ IN CONJUNCTION WITH RELEVANT DETAIL DRAWINGS AS MENTIONED IN THE DRAWING
5. CONTRACTOR TO CONSTRUCT A MOCKUP FOR APPROVAL OF FINISHES & DETAILS, AND GET A SIGN OFF FROM CLIENTS & ARCHITECTS
6. THIS DRAWING TO BE READ IN TANDEM WITH THE DETAILS/SCHEDULES/SPECIFICATIONS AS REQUIRED

KEYPLAN

REVISIONS

No.	Date	By	Issue/Revision Details



LXA London
 Hatfield House
 52-54 Stamford Street
 London, SE1 9LX
 E. info@WeAreLXA.com
 W. www.WeAreLXA.com

DRAWING TITLE :
PROPOSED FLOOR PLAN

PROJECT :
**43 ENGLAND'S LANE
 LONDON NW3 4YD**

CLIENT :
FINE ARTS COLLEGE

Rev No: - Date: **15.06.17**

Drawn: **MJS** Checked: - Approved: -

Scale: **1:100@A3** Drawing No. **LXA-43FAC-100**