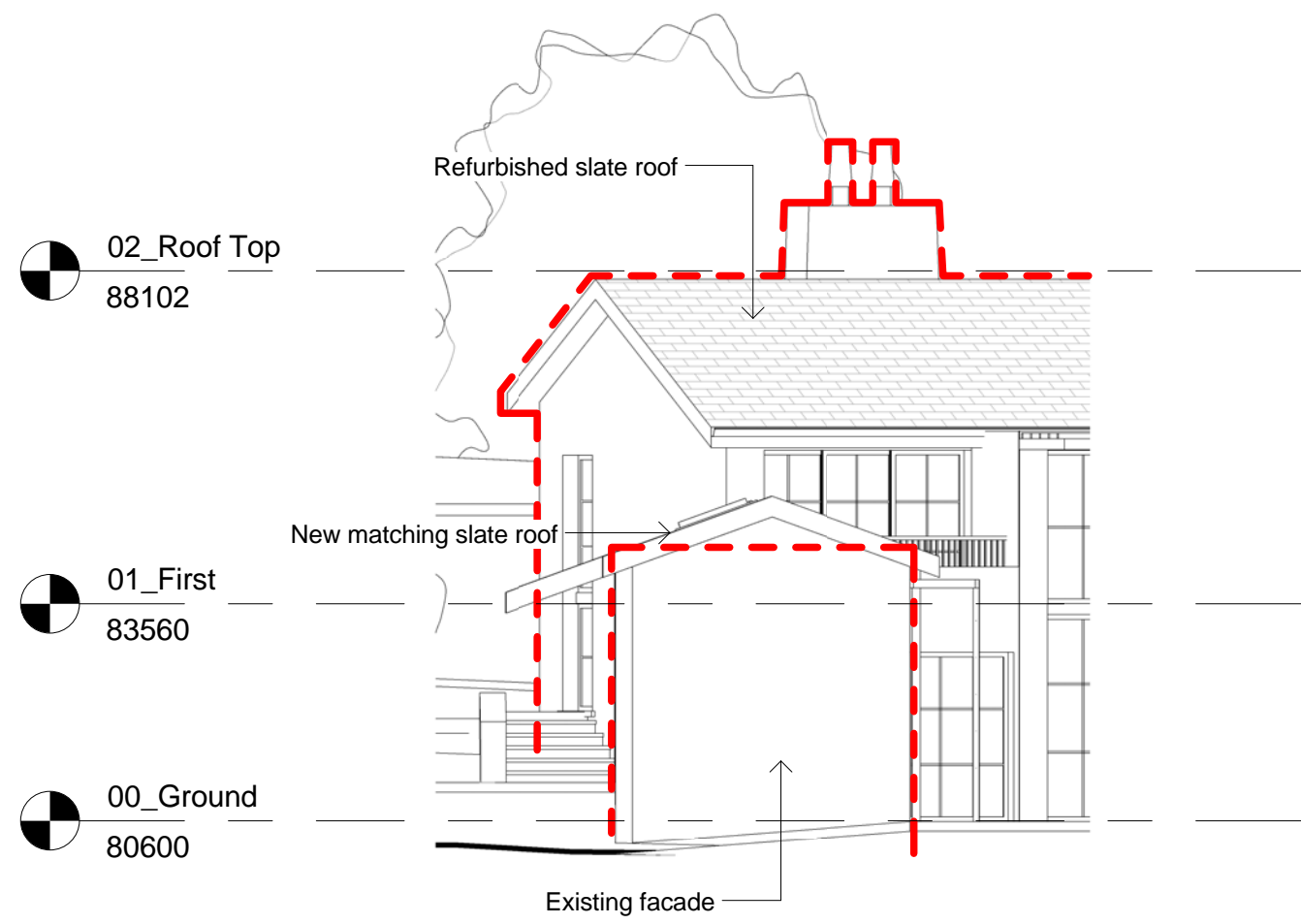
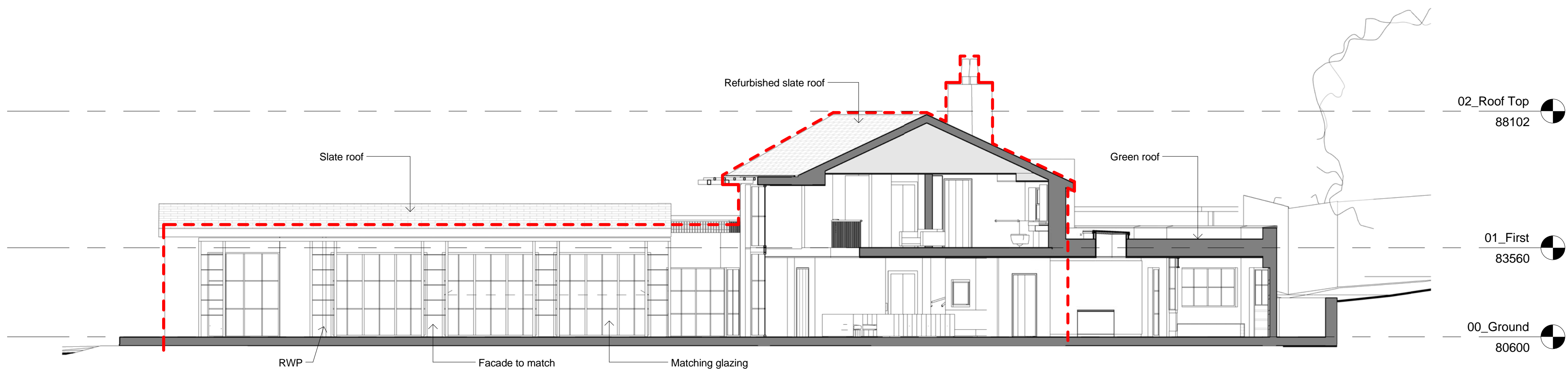


**1** West Wing Elevation - West  
1:100 @ A1



**2** West Wing Elevation - South  
1:100 @ A1



**3** West Wing Elevation - East  
1:100 @ A1



General notes:  
This drawing is copyright of KSR architects. This drawing must be read in conjunction with the Designer's Risk Assessment, specification and all other relevant documentation and drawings. KSR architects accept no liability for any expense, loss or damage of whatsoever nature and however arising from any variation made to this drawing or in the execution of the work to which it relates which has not been referred to them and their approval obtained.  
Do not scale from this drawing or the digital data, only figured dimensions are to be used. For Planning refer to linear scale. Check all dimensions on site prior to carrying out any works - advise any discrepancy

Notes/Legends

Key:  
- - - Line of existing building

|                      |             |            |      |
|----------------------|-------------|------------|------|
| Planning Application |             | 26/06/2017 |      |
| Rev                  | Description | Date       | Chkd |

© KSR architects

Stamp:

**PLANNING**

Key Plan

**KSRARCHITECTS**  
KSR Architects LLP  
14 Greenland Street  
London NW10 0ND  
info@ksrarchitects.com  
t: +44 (0)20 7692 5000  
www.ksrarchitects.com

Project:  
**THE WATER HOUSE**

Title:  
**Proposed West Wing Elevations - 3**

|       |          |           |    |          |    |
|-------|----------|-----------|----|----------|----|
| Date: | 05/04/17 | Drawn By: | IT | Checked: | RM |
|-------|----------|-----------|----|----------|----|

|        |       |        |    |         |          |
|--------|-------|--------|----|---------|----------|
| Scale: | 1/500 | Sheet: | A1 | Status: | Planning |
|--------|-------|--------|----|---------|----------|

|              |             |           |
|--------------|-------------|-----------|
| Project Ref: | Drawing No: | Revision: |
| 17007        | 17007-P302  | A         |