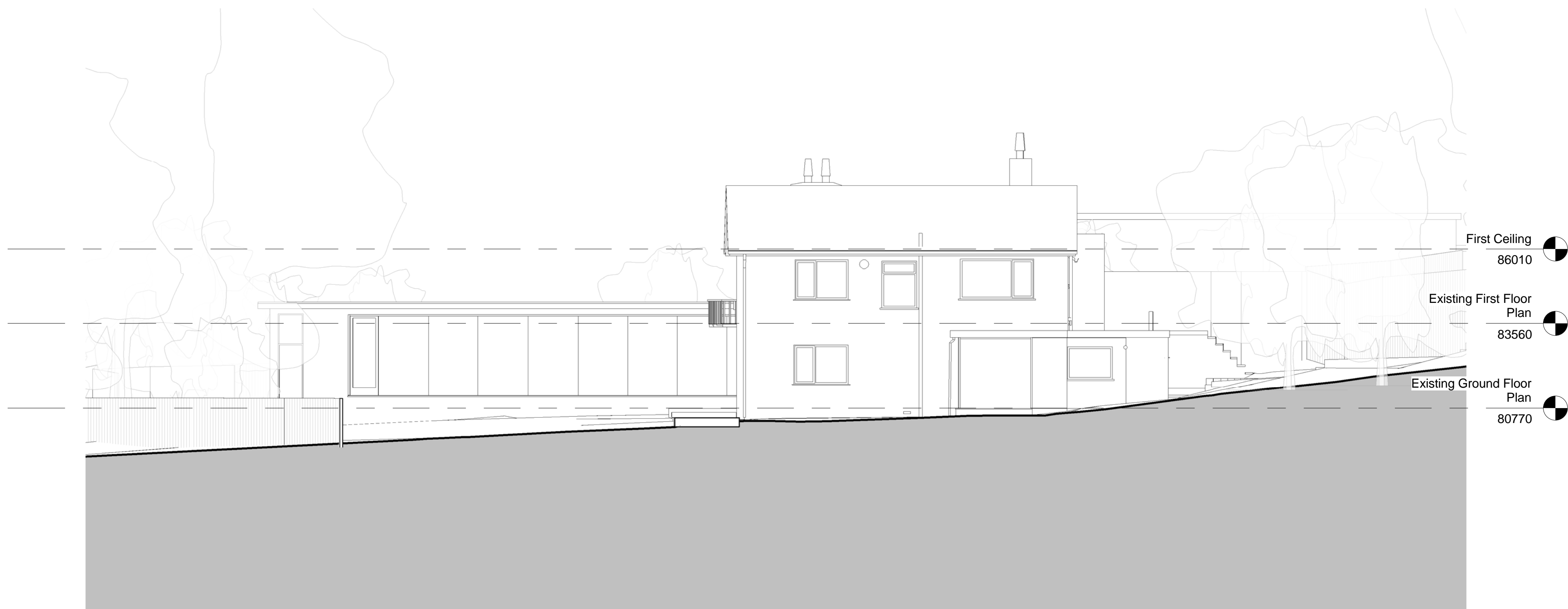




1 South Elevation  
1:100 @ A1



2 East Elevation  
1:100 @ A1



General notes:

This drawing is copyright of KSR architects. This drawing must be read in conjunction with the Designer's Risk Assessment, specification and all other relevant documentation and drawings. KSR architects accept no liability for any expense, loss or damage of whatsoever nature and however arising from any variation made to this drawing or in the execution of the work to which it relates which has not been referred to them and their approval obtained.  
Do not scale from this drawing or the digital data, only figured dimensions are to be used. For Planning refer to linear scale. Check all dimensions on site prior to carrying out any works - advise any discrepancy

Notes/Legends

Existing drawings supplied by Laser Surveys. All dimensions, sizes and positions as per Laser Surveys survey. KSR Architects can not take responsibility for any discrepancies on existing building elements.

A Planning Application		26/03/2017	
Rev	Description	Date	Chkd
© KSR architects			
Stamp:			
PLANNING			
Key Plan			
KSRARCHITECTS			
KSR Architects LLP 14 Greenland Street London NW1 0ND t: +44 (0)20 7692 5000 e: info@ksrarchitects.com www.ksrarchitects.com			
Project:			
THE WATER HOUSE			
Title:			
Existing Elevations 1			
Date:	04/7/17	Drawn By:	IT
		Checked:	RM
Scale:	1:100	Sheet:	A1
		Status:	Planning
Project Ref:	17007	Drawing No:	17007-X300
		Revision:	A