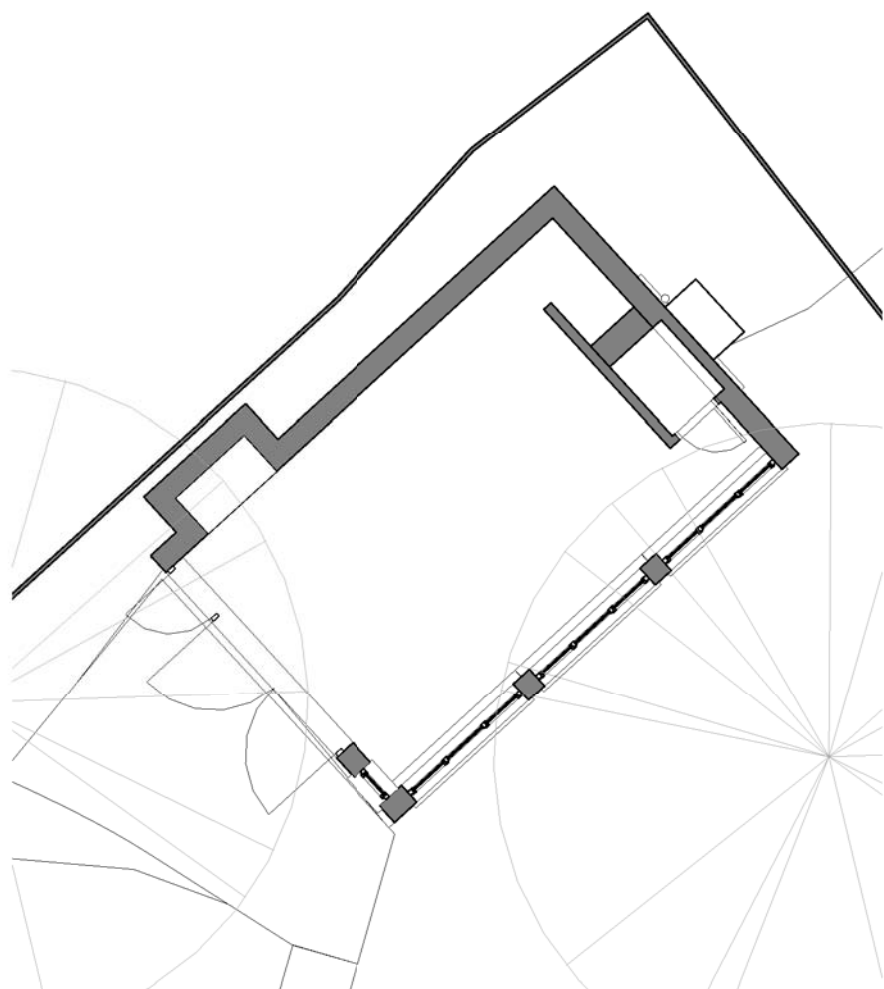
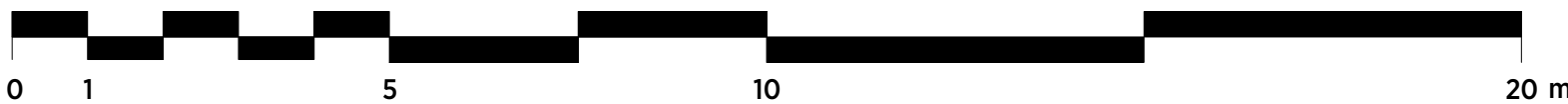


1 Existing Ground Floor Plan
1:100 @ A1



2 Outbuilding Ground Floor Plan
1:100



General notes:

This drawing is copyright of KSR architects. This drawing must be read in conjunction with the Designer's Risk Assessment, specification and all other relevant documentation and drawings. KSR architects accept no liability for any expense, loss or damage of whatsoever nature and however arising from any variation made to this drawing or in the execution of the work to which it relates which has not been referred to them and their approval obtained. Do not scale from this drawing or the digital data, only figured dimensions are to be used. For Planning refer to linear scale. Check all dimensions on site prior to carrying out any works - advise any discrepancy

Notes/Legends

Existing drawings supplied by Laser Surveys. All dimensions, sizes and positions as per Laser Surveys survey. KSR Architects can not take responsibility for any discrepancies on existing building elements.

A Planning Application 26/03/2017

| Rev | Description | Date | Chkd |
|-----|-------------|------|------|
|-----|-------------|------|------|

© KSR architects

Stamp:

PLANNING

Key Plan



KSRARCHITECTS

KSR Architects LLP
14 Greenland Street
London NW1 0ND

mail@ksrarchitects.com
t +44 (0)20 7692 5000
www.ksrarchitects.com

Project:

THE WATER HOUSE

Title:

Exisiting Ground Floor Plan

| | | | | | |
|-------|---------|-----------|----|----------|----|
| Date: | 04/7/17 | Drawn By: | IT | Checked: | RM |
|-------|---------|-----------|----|----------|----|

| | | | | | |
|--------|-------|--------|----|---------|----------|
| Scale: | 1:100 | Sheet: | A1 | Status: | Planning |
|--------|-------|--------|----|---------|----------|

| | | |
|--------------|-------------------|-----------|
| Project Ref: | Drawing No: | Revision: |
| 17007 | 17007-X100 | A |