

**Existing Outbuilding GIA**  
29.84 m<sup>2</sup>  
321.2 ft<sup>2</sup>

**Existing GIA**  
249.93 m<sup>2</sup>  
2690.2 ft<sup>2</sup>

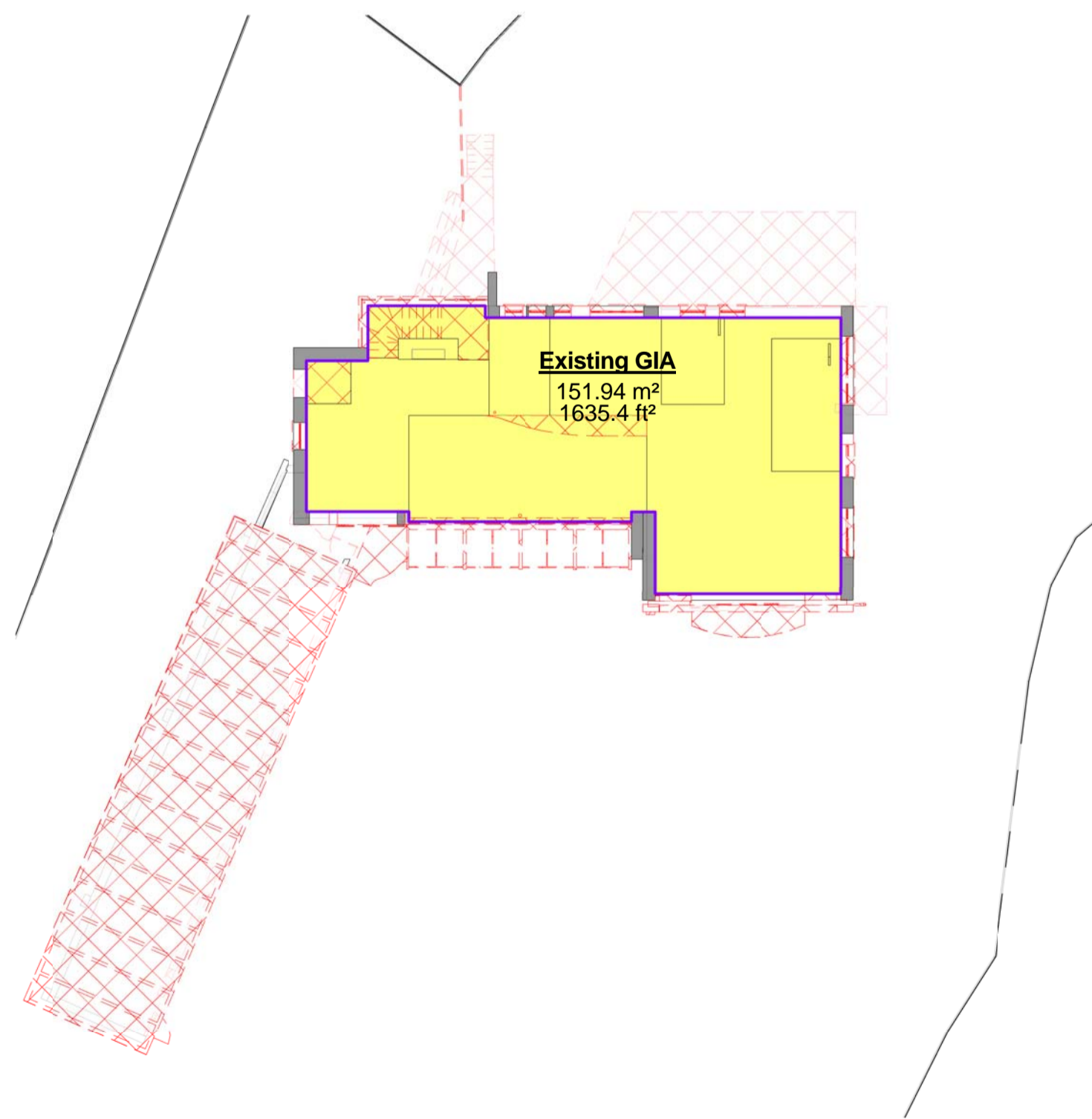
**1 100\_Ground Floor Existing GIA**  
1:200 @ A1

Area Schedule (GIA - Existing)			
Level	Name	Area	Area (Imperial)
00_Ground	Existing GIA	250 m <sup>2</sup>	2690 ft <sup>2</sup>
00_Ground	Existing Outbuilding GIA	30 m <sup>2</sup>	321 ft <sup>2</sup>
01_First	Existing GIA	152 m <sup>2</sup>	1635 ft <sup>2</sup>

Area Schedule (GIA - Proposed)			
Level	Name	Area	Area (Imperial)
00_Ground	Existing GIA	250 m <sup>2</sup>	2690 ft <sup>2</sup>
00_Ground	Existing Outbuilding GIA	30 m <sup>2</sup>	321 ft <sup>2</sup>
00_Ground	Proposed Additional GIA	130 m <sup>2</sup>	1398 ft <sup>2</sup>
00_Ground	Proposed Additional Outbuilding GIA	7 m <sup>2</sup>	75 ft <sup>2</sup>
01_First	Existing GIA	152 m <sup>2</sup>	1635 ft <sup>2</sup>
01_First	Proposed Additional GIA	38 m <sup>2</sup>	413 ft <sup>2</sup>

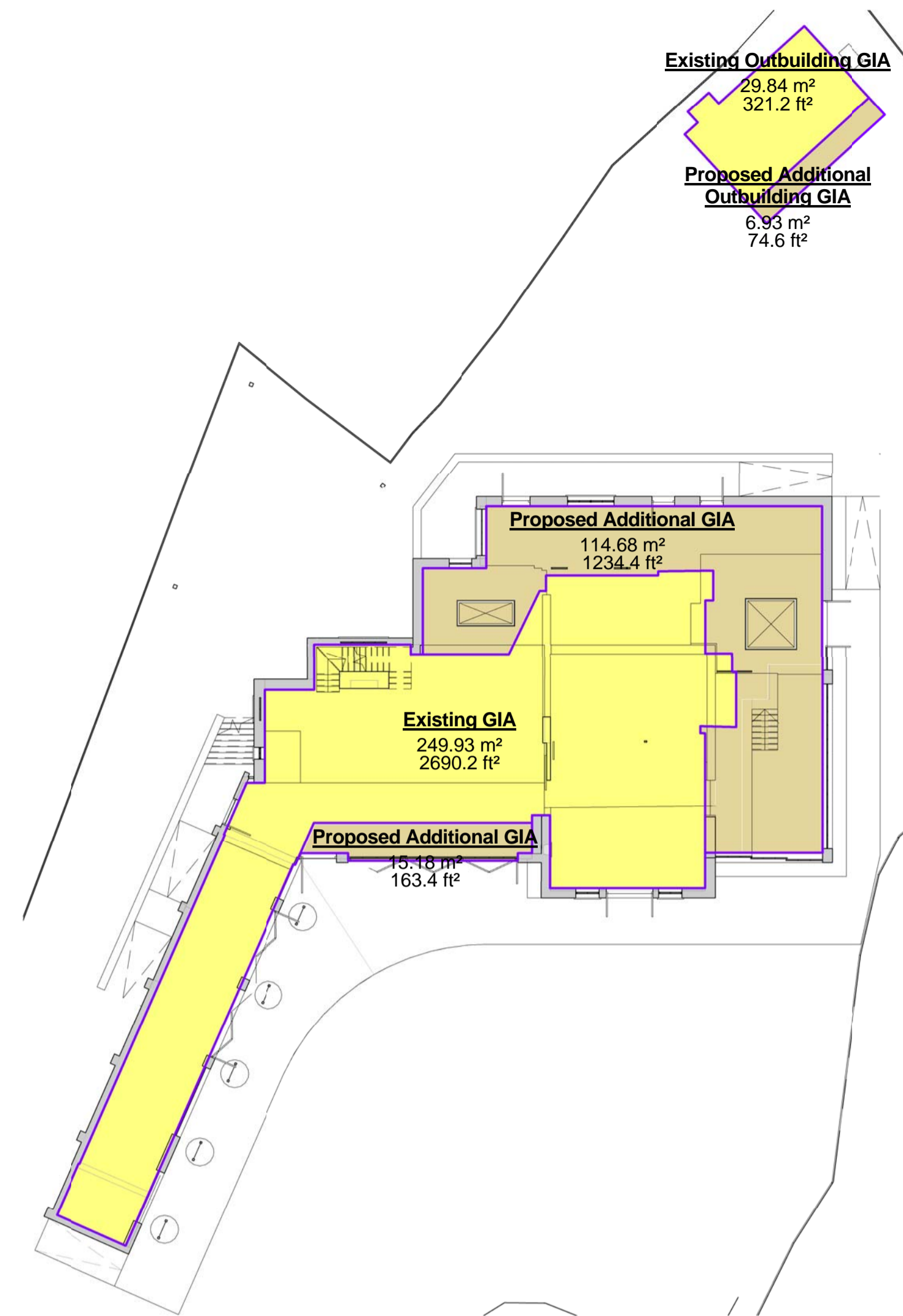
Totals	Existing GIA	Proposed GIA
Total GIA (Excluding Outbuilding)	402 m <sup>2</sup> (4325 ft <sup>2</sup> )	570 m <sup>2</sup> (6136 ft <sup>2</sup> )
Outbuilding GIA	30 m <sup>2</sup> (321 ft <sup>2</sup> )	37 m <sup>2</sup> (396 ft <sup>2</sup> )
Total Areas	432 m <sup>2</sup> (4646 ft <sup>2</sup> )	607 m <sup>2</sup> (6532 ft <sup>2</sup> )
Proposed Percentage	100%	142%

<b>SITE</b>	2267 m <sup>2</sup> (24399 ft <sup>2</sup> )
-------------	----------------------------------------------



**Existing GIA**  
151.94 m<sup>2</sup>  
1635.4 ft<sup>2</sup>

**2 110\_First Floor Existing GIA**  
1:200 @ A1



**Existing Outbuilding GIA**  
29.84 m<sup>2</sup>  
321.2 ft<sup>2</sup>

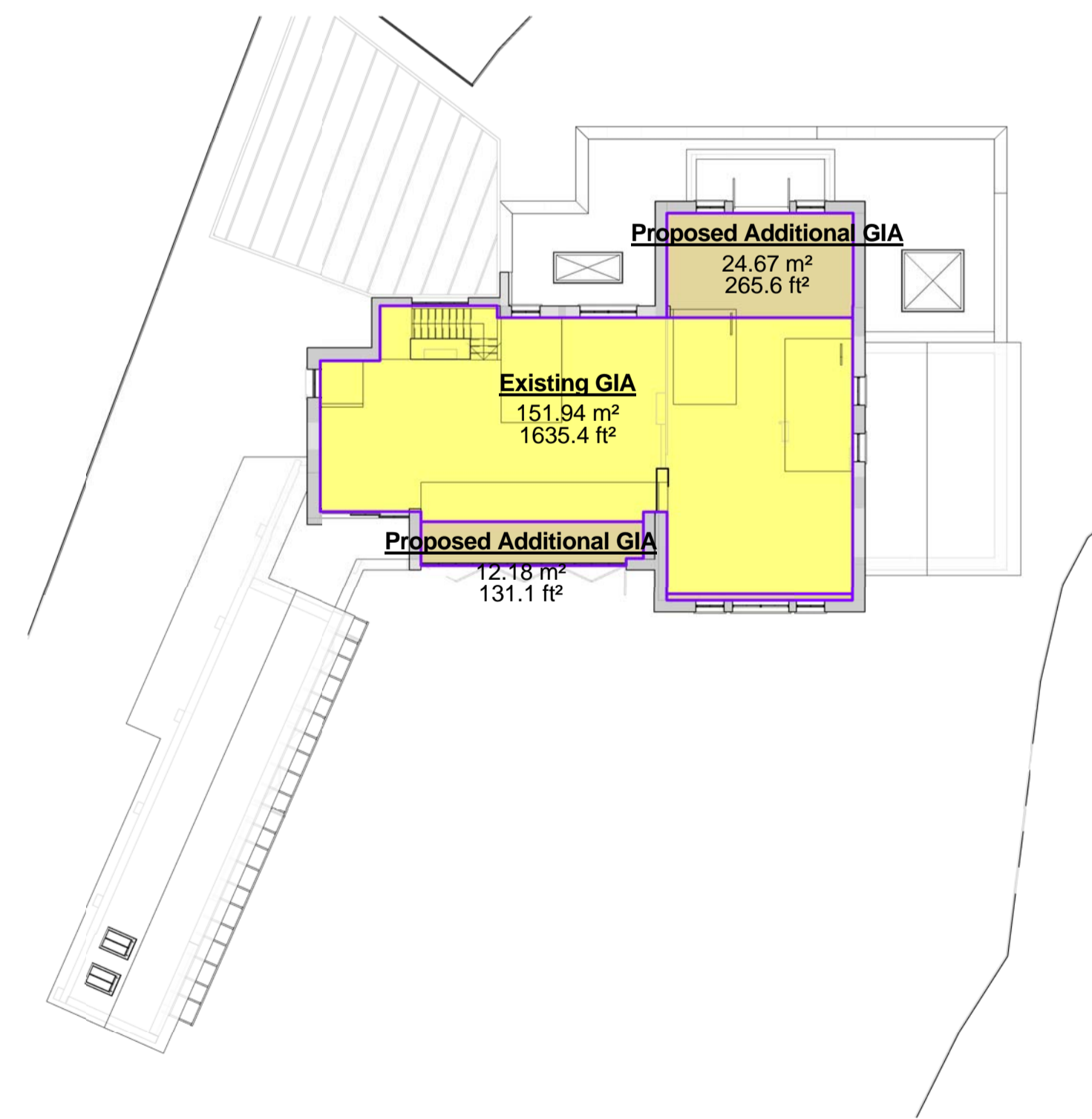
**Proposed Additional Outbuilding GIA**  
6.93 m<sup>2</sup>  
74.6 ft<sup>2</sup>

**Existing GIA**  
249.93 m<sup>2</sup>  
2690.2 ft<sup>2</sup>

**Proposed Additional GIA**  
114.68 m<sup>2</sup>  
1234.4 ft<sup>2</sup>

**Proposed Additional GIA**  
15.16 m<sup>2</sup>  
163.4 ft<sup>2</sup>

**3 100\_Ground Floor Proposed GIA**  
1:200 @ A1



**Proposed Additional GIA**  
24.67 m<sup>2</sup>  
265.6 ft<sup>2</sup>

**Existing GIA**  
151.94 m<sup>2</sup>  
1635.4 ft<sup>2</sup>

**Proposed Additional GIA**  
12.18 m<sup>2</sup>  
131.1 ft<sup>2</sup>

**4 110\_First Floor Proposed GIA**  
1:200 @ A1

General notes:  
This drawing is copyright of KSR architects. This drawing must be read in conjunction with the Designer's Risk Assessment, specification and all other relevant documentation and drawings. KSR architects accept no liability for any expense, loss or damage of whatsoever nature and however arising from any variation made to this drawing or in the execution of the work to which it relates which has not been referred to them and their approval obtained.  
Do not scale from this drawing or the digital data, only figured dimensions are to be used. For Planning refer to linear scale. Check all dimensions on site prior to carrying out any works - advise any discrepancy

Notes/Legends

**NOTE:** Existing areas are based on the survey model received from Laser Surveys. KSR can not take responsibility for the measurements related to this. All dimensions to be checked on site.

LEGEND - GIA	
	Existing Area
	Proposed Additional Area

A. Planning Application 30/06/2017  
Rsk Description Date Chkd  
KSR architects  
Stamp: **PLANNING**

Key Plan



**KSRARCHITECTS**  
KSR Architects LLP mail@ksrarchitects.com  
14 Greenland Street t: +44 (0)20 7692 5000  
London NW10 0ND www.ksrarchitect.com

Project:  
**THE WATER HOUSE**

Title:  
**Area Plans - GIA**

Date: 04/24/17 Drawn By: IT Checked: RM

Scale: 1:200 Sheet: A1 Status: Planning

Project Ref	Drawing No	Revision
17007	17007-8-001	A