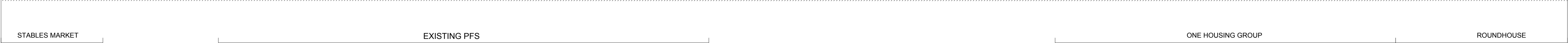
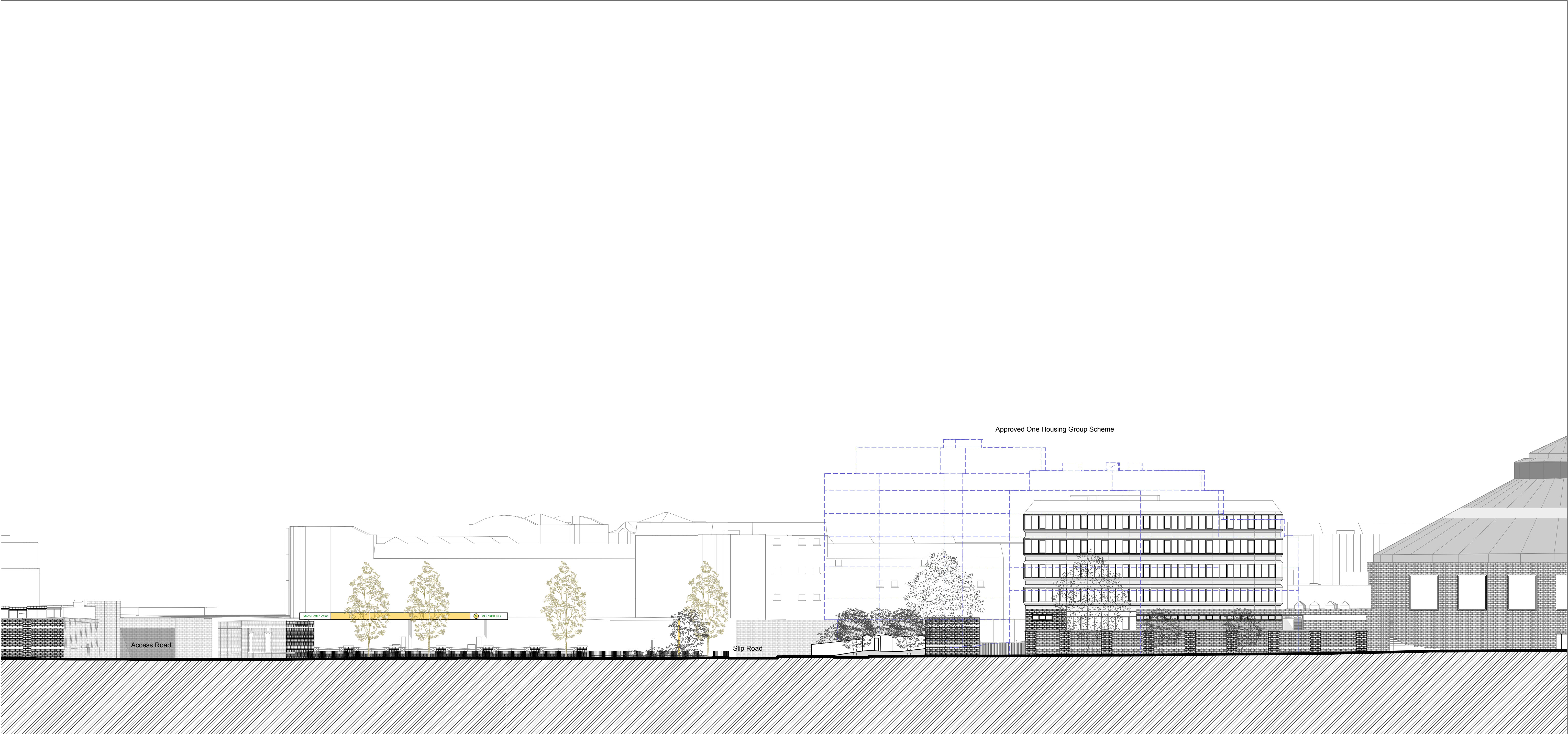
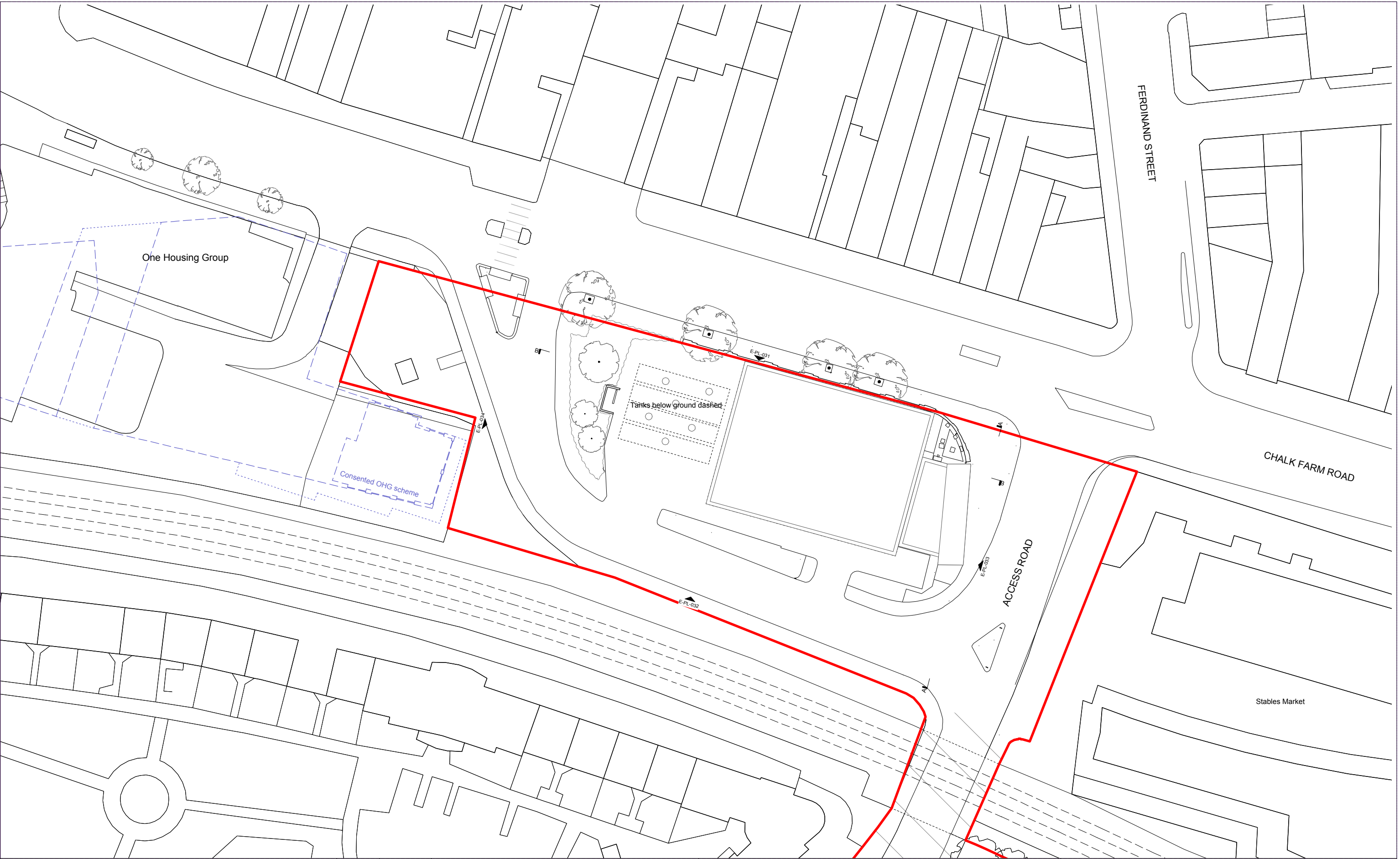


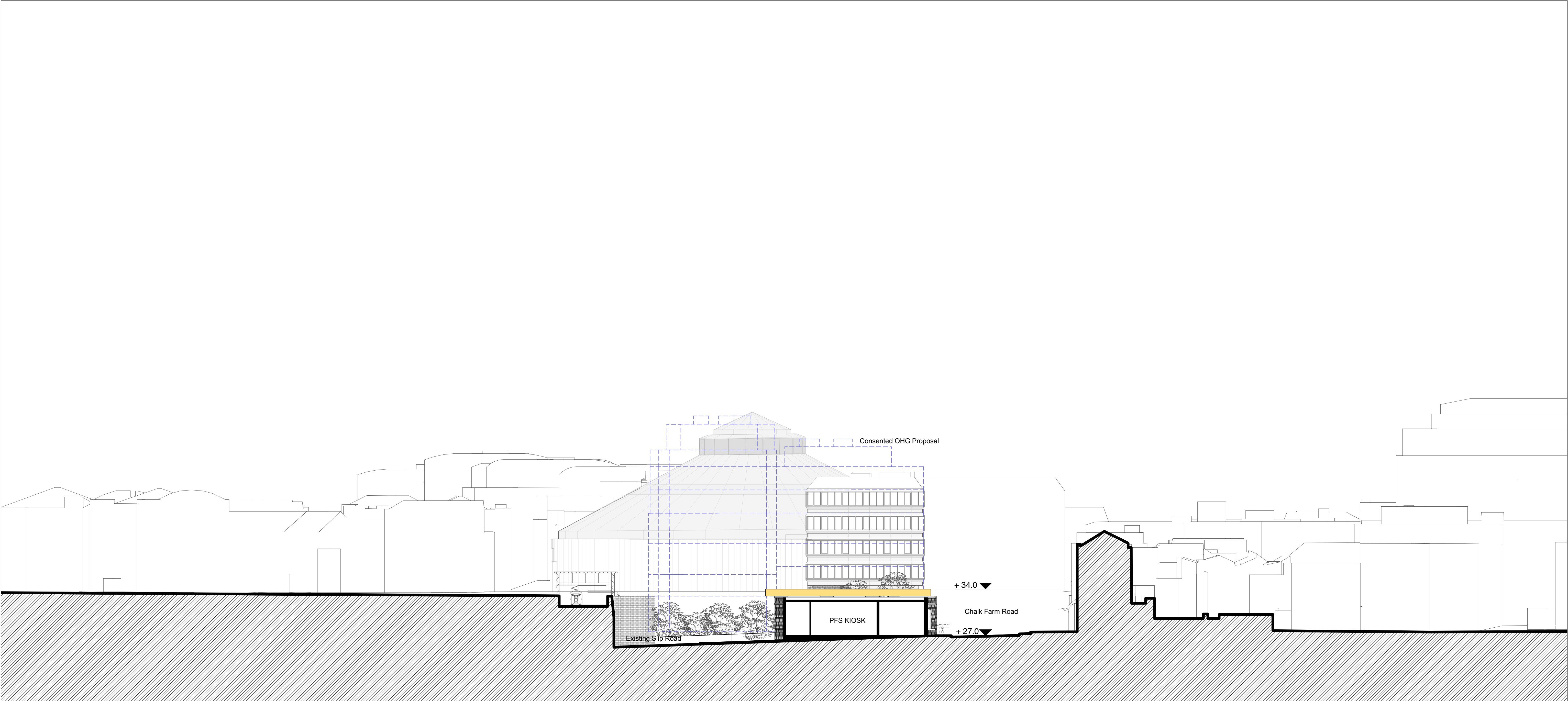
Key	Revision	Date	Description	Notes	Níall McLaughlin Architects		
<div><div></div>Application Site Boundary</div> <div><div></div>Extent of proposed Petrol Filling Station site</div> <div><div></div>Footprint of consented One Housing Group proposal</div> <div><div></div>Refer to information provided by Allies & Morrison and Piercy & Co.</div>				<div><div>• SIGNAGE WORDING AND GRAPHICS SHOWN ARE INDICATIVE; EXACT SIGNAGE PROPOSALS TO BE SUBMITTED BY INDIVIDUAL RETAILER. LOCATIONS AND APPROXIMATE SIZES ARE AS SHOWN.</div><div>• SURVEY TO BE CARRIED OUT TO DETERMINE EXACT LOCATIONS OF BELOW GROUND SERVICE ROUTES.</div><div>• DEVELOPED PTROL FILLING STATION PROPOSALS TO BE APPROVED BY THE PETROLEUM OFFICERS OF THE LONDON FIRE BRIGADE.</div><div>• DRAWINGS FOR PURPOSE OF PLANNING APPROVAL ASSESSMENT ONLY.</div></div> <div><div>0210m</div><div></div></div> <div><div>N</div></div>	<div><div>JOB:</div>1605 - Camden Goods Yard: Petrol Filling Station Site</div> <div><div>CLIENT:</div>Morrisons & Barratt Homes</div> <div><div>SCALE:</div>1:500 @A3; 1:250 @ A1</div> <div><div>DATE FIRST ISSUED:</div>30.06.2017</div> <div><div>DRAWING:</div>Existing Site Plan</div> <div><div>REFERENCE:</div>1605-PL-002</div> <div><div>REVISION:</div>-</div> <div><div>STATUS:</div>PLANNING</div>	<div><div>T:</div>+44 (0) 20 7485 9170</div> <div><div>F:</div>+44 (0) 20 7485 9171</div> <div><div>E:</div>info@niallmclaughlin.com</div> <div><div>W:</div>www.niallmclaughlin.com</div>	



Key	Revision	Date	Description	Notes	Niall McLaughlin Architects		
				<div><div><div>· SIGNAGE WORDING AND GRAPHICS SHOWN ARE INDICATIVE: EXACT SIGNAGE PROPOSALS TO BE SUBMITTED BY INDIVIDUAL RETAILER. LOCATIONS AND APPROXIMATE SIZES ARE AS SHOWN.</div><div>· SURVEY TO BE CARRIED OUT TO DETERMINE EXACT LOCATIONS OF BELOW GROUND SERVICE ROUTES.</div><div>· DEVELOPED PTIROL FILLING STATION PROPOSALS TO BE APPROVED BY THE PETROLEUM OFFICERS OF THE LONDON FIRE BRIGADE.</div><div>· DRAWINGS FOR PURPOSE OF PLANNING APPROVAL ASSESSMENT ONLY.</div></div><div><div>0210m</div><div><div></div><div></div></div></div></div>	<div><div>JOB:</div><div>CLIENT:</div><div>SCALE:</div><div>DATE FIRST ISSUED:</div><div>DRAWING:</div><div>REFERENCE:</div><div>REVISION:</div><div>STATUS:</div></div> <div><div>1605 - Camden Goods Yard</div><div>Morrisons & Barratt Homes</div><div>1:250 @ A1</div><div>30.06.2017</div><div>Existing Site Elevation - North</div><div>1605-PL-003</div><div>-</div><div>PLANNING</div></div> <div><div>Bedford House</div><div>125-133 Camden High Street</div><div>London NW1 7JR</div><div>T: +44 (0) 20 7485 9170</div><div>F: +44 (0) 20 7485 9171</div><div>E: info@niallmclaughlin.com</div><div>W: www.niallmclaughlin.com</div></div>		

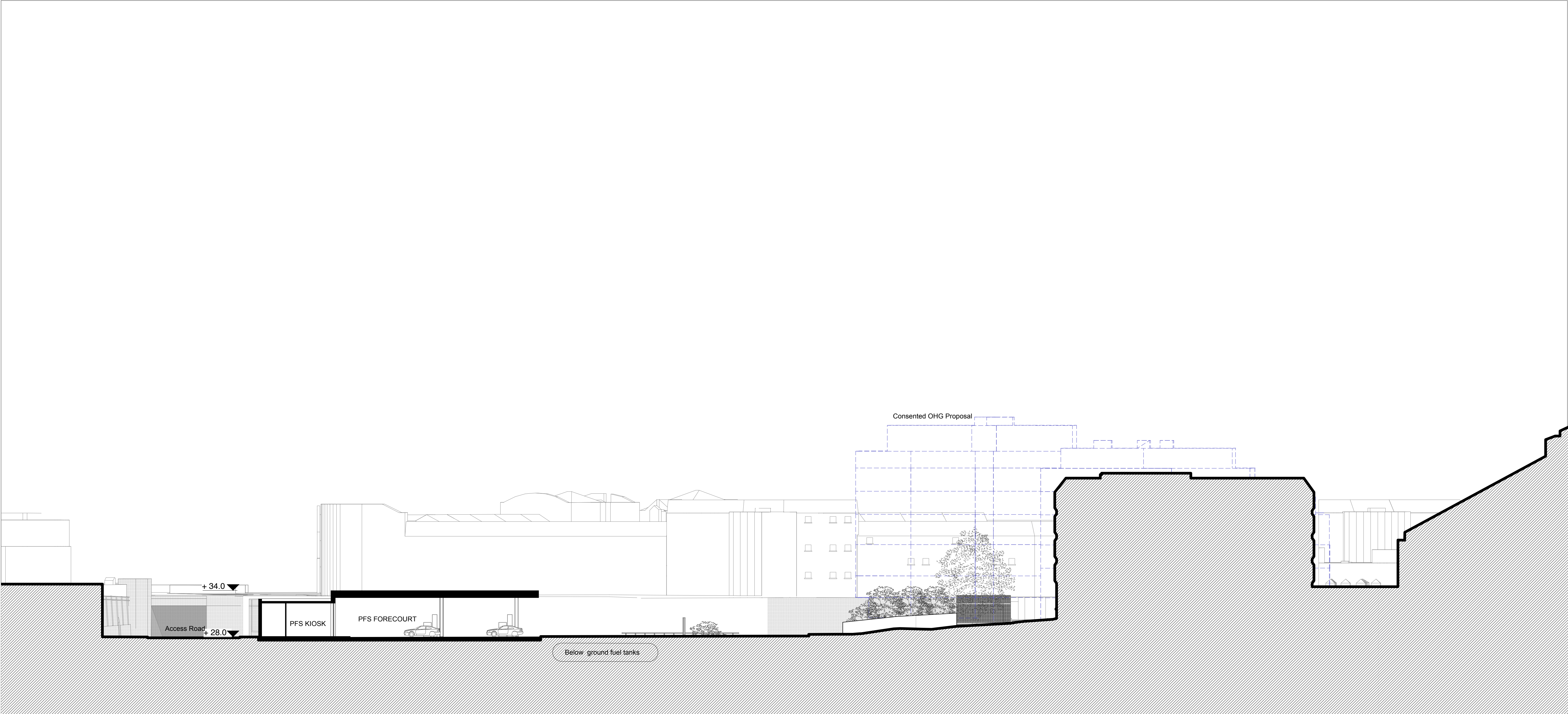


Key	Revision	Date	Description	Notes	Níall McLaughlin Architects		
<div><div></div>Application Site Boundary</div> <div><div></div>Extent of proposed Petrol Filling Station site</div> <div><div></div>Footprint of consented One Housing Group proposal</div> <div><div></div>Refer to information provided by Allies & Morrison and Piercy & Co.</div>				<div><div></div> SIGNAGE WORDING AND GRAPHICS SHOWN ARE INDICATIVE; EXACT SIGNAGE PROPOSALS TO BE SUBMITTED BY INDIVIDUAL RETAILER. LOCATIONS AND APPROXIMATE SIZES ARE AS SHOWN.</div> <div><div></div> SURVEY TO BE CARRIED OUT TO DETERMINE EXACT LOCATIONS OF BELOW GROUND SERVICE ROUTES.</div> <div><div></div> DEVELOPED PTROL FILLING STATION PROPOSALS TO BE APPROVED BY THE PETROLEUM OFFICERS OF THE LONDON FIRE BRIGADE.</div> <div><div></div> DRAWINGS FOR PURPOSE OF PLANNING APPROVAL ASSESSMENT ONLY.</div> <div><div>0210m</div></div> <div><div>N</div></div>	<div><div>JOB:</div>1605 - Camden Goods Yard: Petrol Filling Station Site</div> <div><div>CLIENT:</div>Morrisons & Barratt Homes</div> <div><div>SCALE:</div>1:500 @A3; 1:250 @ A1</div> <div><div>DATE FIRST ISSUED:</div>30.06.2017</div> <div><div>DRAWING:</div>Existing Roof Plan</div> <div><div>REFERENCE:</div>1605-PL-004</div> <div><div>REVISION:</div>-</div> <div><div>STATUS:</div>PLANNING</div>	<div><div></div>Bedford House</div> <div><div></div>125-133 Camden High Street</div> <div><div></div>London NW1 7JR</div> <div><div>T:</div>+44 (0) 20 7485 9170</div> <div><div>F:</div>+44 (0) 20 7485 9171</div> <div><div>E:</div>info@niallmclaughlin.com</div> <div><div>W:</div>www.niallmclaughlin.com</div>	

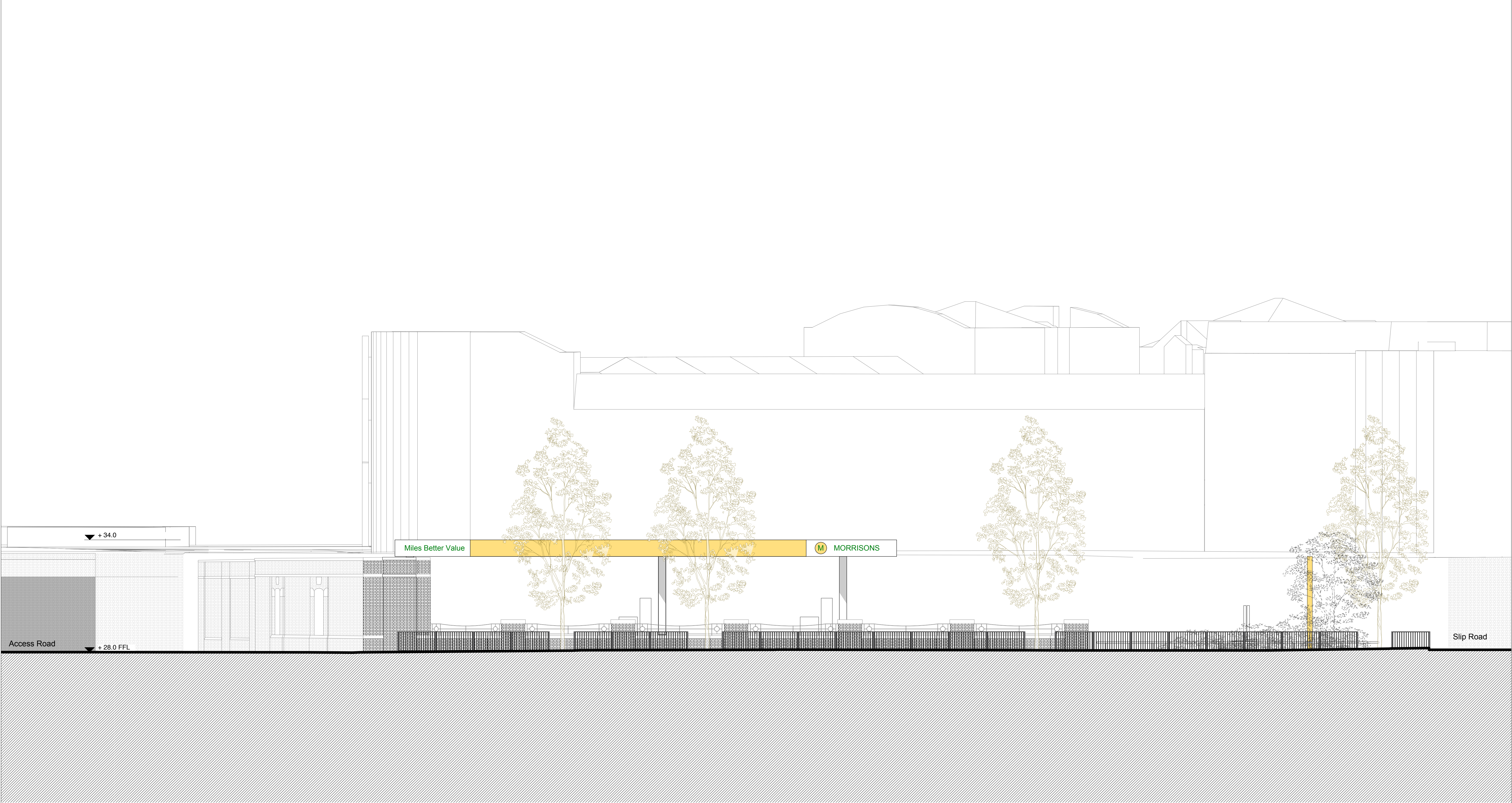


EXISTING PFS

Key	Revision	Date	Description	Notes	Niall McLaughlin Architects		
				<div><div><div><div>· SIGNAGE WORDING AND GRAPHICS SHOWN ARE INDICATIVE: EXACT SIGNAGE PROPOSALS TO BE SUBMITTED BY INDIVIDUAL RETAILER. LOCATIONS AND APPROXIMATE SIZES ARE AS SHOWN.</div><div>· SURVEY TO BE CARRIED OUT TO DETERMINE EXACT LOCATIONS OF BELOW GROUND SERVICE ROUTES.</div><div>· DEVELOPED PTIROL FILLING STATION PROPOSALS TO BE APPROVED BY THE PETROLEUM OFFICERS OF THE LONDON FIRE BRIGADE.</div><div>· DRAWINGS FOR PURPOSE OF PLANNING APPROVAL ASSESSMENT ONLY.</div></div></div><div><div>02</div><div>10m</div></div></div>	<div><div>JOB:</div><div>CLIENT:</div><div>SCALE:</div><div>DATE FIRST ISSUED:</div><div>DRAWING:</div><div>REFERENCE:</div><div>REVISION:</div><div>STATUS:</div></div> <div><div>1605 - Camden Goods Yard</div><div>Morrisons & Barratt Homes</div><div>1:250 @ A1</div><div>30.06.2017</div><div>Existing Site Section AA</div><div>1605-PL-020</div><div>-</div><div>PLANNING</div></div>	<div><div>Bedford House</div><div>125-133 Camden High Street</div><div>London NW1 7JR</div><div>T: +44 (0) 20 7485 9170</div><div>F: +44 (0) 20 7485 9171</div><div>E: info@niallmclaughlin.com</div><div>W: www.niallmclaughlin.com</div></div>	

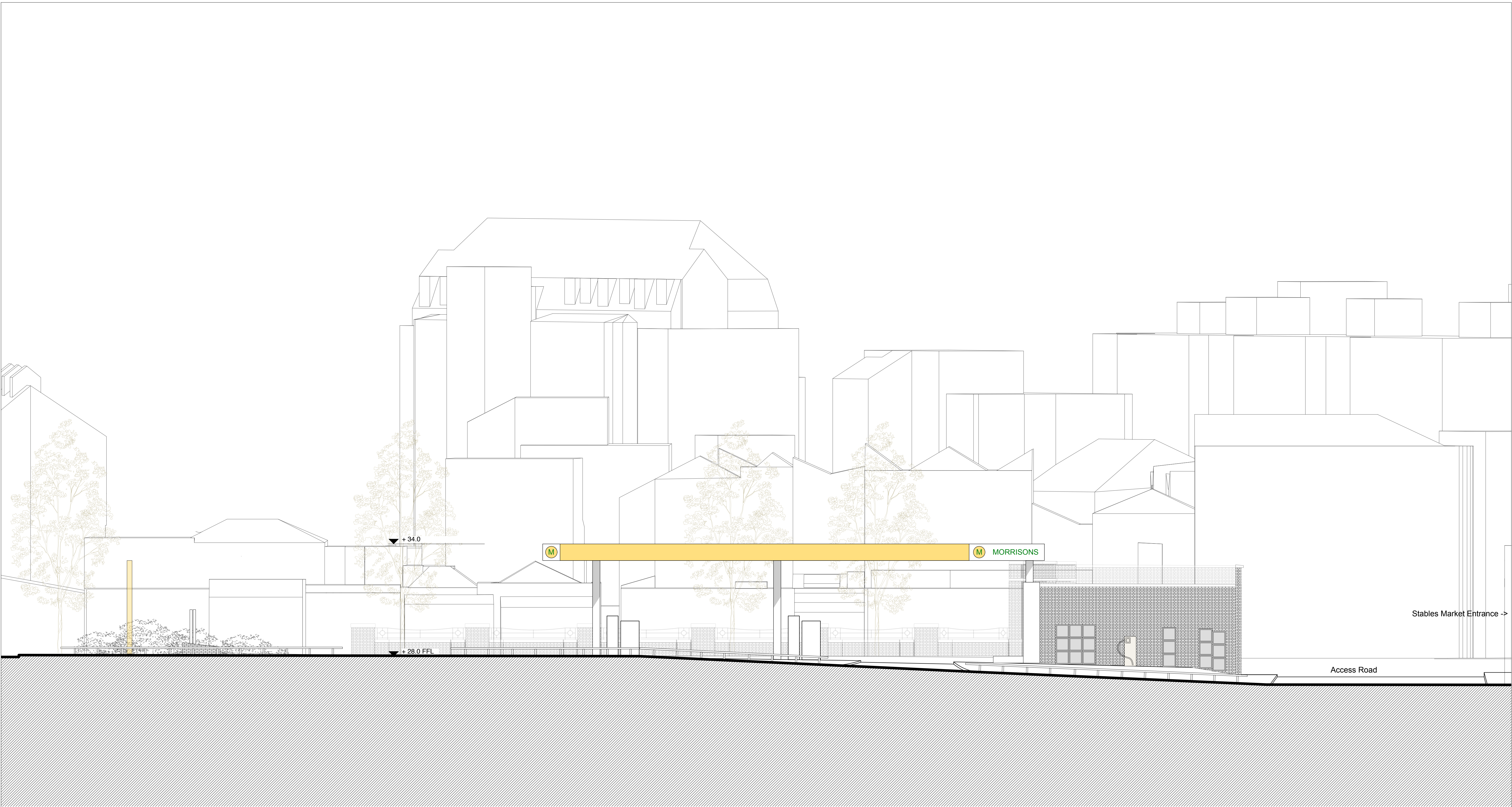


Key	Revision	Date	Description	Notes	Niall McLaughlin Architects		
				<div><div><div>· SIGNAGE WORDING AND GRAPHICS SHOWN ARE INDICATIVE: EXACT SIGNAGE PROPOSALS TO BE SUBMITTED BY INDIVIDUAL RETAILER. LOCATIONS AND APPROXIMATE SIZES ARE AS SHOWN.</div><div>· SURVEY TO BE CARRIED OUT TO DETERMINE EXACT LOCATIONS OF BELOW GROUND SERVICE ROUTES.</div><div>· DEVELOPED PTROL FILLING STATION PROPOSALS TO BE APPROVED BY THE PETROLEUM OFFICERS OF THE LONDON FIRE BRIGADE.</div><div>· DRAWINGS FOR PURPOSE OF PLANNING APPROVAL ASSESSMENT ONLY.</div></div><div><div>0</div><div>2</div><div>10m</div></div></div>	<div><div>JOB:</div><div>CLIENT:</div><div>SCALE:</div><div>DATE FIRST ISSUED:</div><div>DRAWING:</div><div>REFERENCE:</div><div>REVISION:</div><div>STATUS:</div></div> <div><div>1605 - Camden Goods Yard</div><div>Morrisons & Barratt Homes</div><div>1:250 @ A1</div><div>30.06.2017</div><div>Existing Site Section BB</div><div>1605-PL-021</div><div>-</div><div>PLANNING</div></div> <div><div>Bedford House</div><div>125-133 Camden High Street</div><div>London NW1 7JR</div><div>T: +44 (0) 20 7485 9170</div><div>F: +44 (0) 20 7485 9171</div><div>E: info@niallmclaughlin.com</div><div>W: www.niallmclaughlin.com</div></div>		



EXISTING PFS

Key	Revision	Date	Description	Notes	Niall McLaughlin Architects		
				<div><div><div>· SIGNAGE WORDING AND GRAPHICS SHOWN ARE INDICATIVE: EXACT SIGNAGE PROPOSALS TO BE SUBMITTED BY INDIVIDUAL RETAILER. LOCATIONS AND APPROXIMATE SIZES ARE AS SHOWN.</div><div>· SURVEY TO BE CARRIED OUT TO DETERMINE EXACT LOCATIONS OF BELOW GROUND SERVICE ROUTES.</div><div>· DEVELOPED PTROL FILLING STATION PROPOSALS TO BE APPROVED BY THE PETROLEUM OFFICERS OF THE LONDON FIRE BRIGADE.</div><div>· DRAWINGS FOR PURPOSE OF PLANNING APPROVAL ASSESSMENT ONLY.</div></div><div><div>012.5m</div></div></div>	<div><div>JOB:1605 - Camden Goods Yard</div><div>CLIENT:Morrisons & Barratt Homes</div><div>SCALE:1:100 @ A1</div><div>DATE FIRST ISSUED:30.06.2017</div><div>DRAWING:Existing North Elevation</div><div>REFERENCE:1605-PL-031</div><div>REVISION:-</div><div>STATUS:PLANNING</div></div>	<div>Bedford House</div> <div>125-133 Camden High Street</div> <div>London NW1 7JR</div> <div>T: +44 (0) 20 7485 9170</div> <div>F: +44 (0) 20 7485 9171</div> <div>E: info@niallmclaughlin.com</div> <div>W: www.niallmclaughlin.com</div>	



EXISTING PFS

Key	Revision	Date	Description	Notes	Niall McLaughlin Architects		
				<div><div><div><div>· SIGNAGE WORDING AND GRAPHICS SHOWN ARE INDICATIVE: EXACT SIGNAGE PROPOSALS TO BE SUBMITTED BY INDIVIDUAL RETAILER. LOCATIONS AND APPROXIMATE SIZES ARE AS SHOWN.</div><div>· SURVEY TO BE CARRIED OUT TO DETERMINE EXACT LOCATIONS OF BELOW GROUND SERVICE ROUTES.</div><div>· DEVELOPED PTROL FILLING STATION PROPOSALS TO BE APPROVED BY THE PETROLEUM OFFICERS OF THE LONDON FIRE BRIGADE.</div><div>· DRAWINGS FOR PURPOSE OF PLANNING APPROVAL ASSESSMENT ONLY.</div></div></div><div><div>012.5m</div></div></div>	<div><div>JOB:1605 - Camden Goods Yard</div><div>CLIENT:Morrisons & Barratt Homes</div><div>SCALE:1:100 @ A1</div><div>DATE FIRST ISSUED:30.06.2017</div><div>DRAWING:Existing South Elevation</div><div>REFERENCE:1605-PL-032</div><div>REVISION:-</div><div>STATUS:PLANNING</div></div>	<div><div>Bedford House</div><div>125-133 Camden High Street</div><div>London NW1 7JR</div><div>T: +44 (0) 20 7485 9170</div><div>F: +44 (0) 20 7485 9171</div><div>E: info@niallmclaughlin.com</div><div>W: www.niallmclaughlin.com</div></div>	

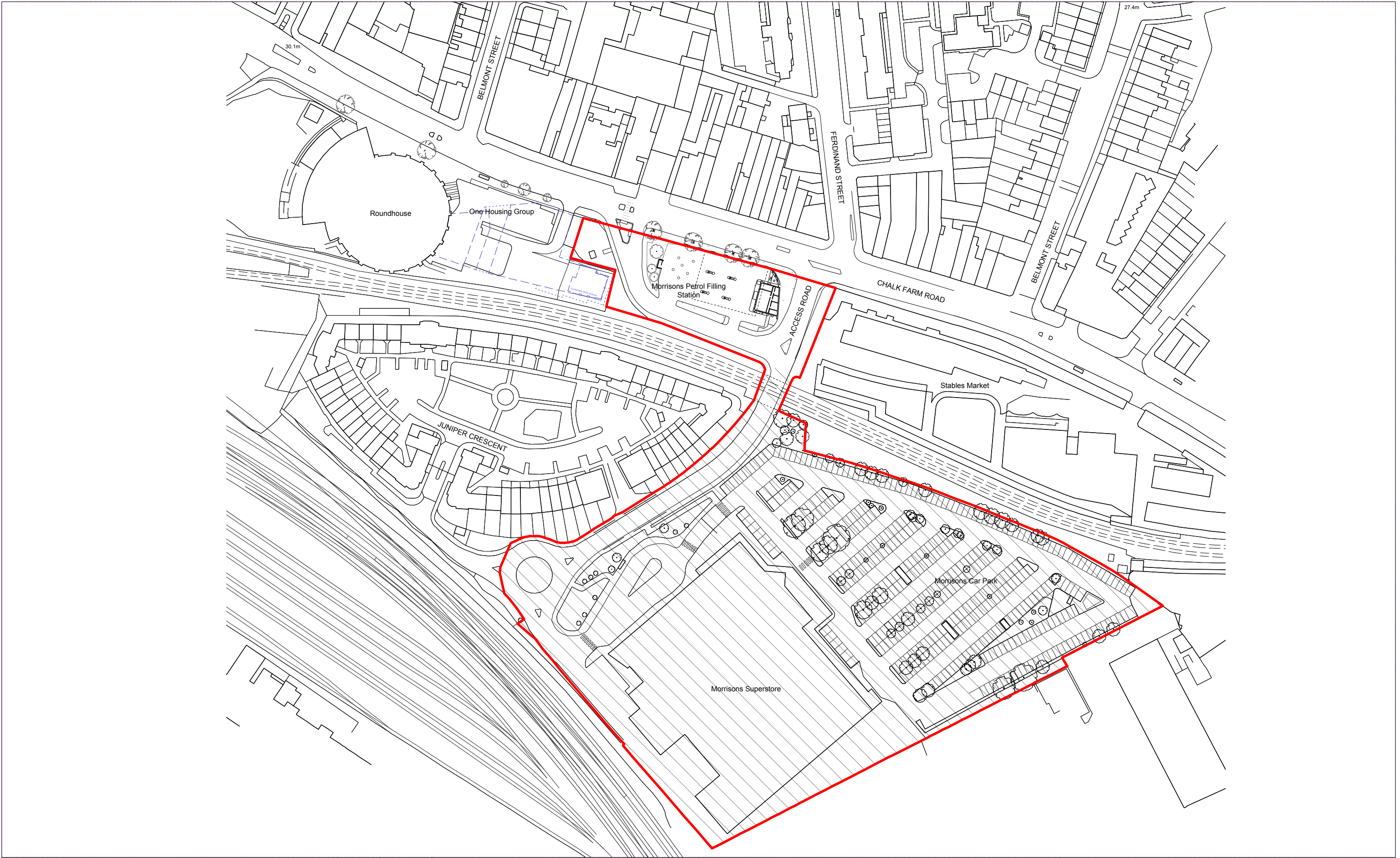


EXISTING PFS					Níall McLaughlin Architects		
Key	Revision	Date	Description	Notes			
				<ul style="list-style-type: none">· SIGNAGE WORDING AND GRAPHICS SHOWN ARE INDICATIVE: EXACT SIGNAGE PROPOSALS TO BE SUBMITTED BY INDIVIDUAL RETAILER. LOCATIONS AND APPROXIMATE SIZES ARE AS SHOWN.· SURVEY TO BE CARRIED OUT TO DETERMINE EXACT LOCATIONS OF BELOW GROUND SERVICE ROUTES.· DEVELOPED PTROL FILLING STATION PROPOSALS TO BE APPROVED BY THE PETROLEUM OFFICERS OF THE LONDON FIRE BRIGADE.· DRAWINGS FOR PURPOSE OF PLANNING APPROVAL ASSESSMENT ONLY.	JOB:	1605 - Camden Goods Yard	Bedford House
					CLIENT:	Morrisons & Barratt Homes	125-133 Camden High Street
					SCALE:	1:100 @ A1	London NW1 7JR
					DATE FIRST ISSUED:	30.06.2017	T: +44 (0) 20 7485 9170
					DRAWING:	Existing East Elevation	F: +44 (0) 20 7485 9171
					REFERENCE:	1605-PL-033	E: info@niallmclaughlin.com
					REVISION:	-	W: www.niallmclaughlin.com
					STATUS:	PLANNING	



EXISTING PFS

Key	Revision	Date	Description	Notes	Niall McLaughlin Architects		
				<div><div><div>· SIGNAGE WORDING AND GRAPHICS SHOWN ARE INDICATIVE: EXACT SIGNAGE PROPOSALS TO BE SUBMITTED BY INDIVIDUAL RETAILER. LOCATIONS AND APPROXIMATE SIZES ARE AS SHOWN.</div><div>· SURVEY TO BE CARRIED OUT TO DETERMINE EXACT LOCATIONS OF BELOW GROUND SERVICE ROUTES.</div><div>· DEVELOPED PTROL FILLING STATION PROPOSALS TO BE APPROVED BY THE PETROLEUM OFFICERS OF THE LONDON FIRE BRIGADE.</div><div>· DRAWINGS FOR PURPOSE OF PLANNING APPROVAL ASSESSMENT ONLY.</div></div><div><div>012.5m</div></div></div>	<div><div>JOB:1605 - Camden Goods Yard</div><div>CLIENT:Morrisons & Barratt Homes</div><div>SCALE:1:100 @ A1</div><div>DATE FIRST ISSUED:30.06.2017</div><div>DRAWING:Existing West Elevation</div><div>REFERENCE:1605-PL-034</div><div>REVISION:-</div><div>STATUS:PLANNING</div></div>	<div>Bedford House</div> <div>125-133 Camden High Street</div> <div>London NW1 7JR</div> <div>T: +44 (0) 20 7485 9170</div> <div>F: +44 (0) 20 7485 9171</div> <div>E: info@niallmclaughlin.com</div> <div>W: www.niallmclaughlin.com</div>	



Key	Revision	Date	Description	Notes	Níall McLaughlin Architects		
<div><div></div>Application Site Boundary</div> <div><div></div>Extent of proposed Petrol Filling Station site</div> <div><div></div>Footprint of consented One Housing Group proposal</div> <div><div></div>Refer to information provided by Allies & Morrison and Piercy & Co.</div>				<div><div>· SIGNAGE WORDING AND GRAPHICS SHOWN ARE INDICATIVE; EXACT SIGNAGE PROPOSALS TO BE SUBMITTED BY INDIVIDUAL RETAILER. LOCATIONS AND APPROXIMATE SIZES ARE AS SHOWN.</div><div>· SURVEY TO BE CARRIED OUT TO DETERMINE EXACT LOCATIONS OF BELOW GROUND SERVICE ROUTES.</div><div>· DEVELOPED PETROL FILLING STATION PROPOSALS TO BE APPROVED BY THE PETROLEUM OFFICERS OF THE LONDON FIRE BRIGADE.</div><div>· DRAWINGS FOR PURPOSE OF PLANNING APPROVAL ASSESSMENT ONLY.</div></div> <div><div>01025m</div></div> <div><div>N</div></div>	<div><div>JOB:</div>1605 - Camden Goods Yard: Petrol Filling Station Site</div> <div><div>CLIENT:</div>Morrisons & Barratt Homes</div> <div><div>SCALE:</div>1:1500 @ A1</div> <div><div>DATE FIRST ISSUED:</div>30.06.2017</div> <div><div>DRAWING:</div>Existing Location Plan</div> <div><div>REFERENCE:</div>1605-PL-001</div> <div><div>REVISION:</div>-</div> <div><div>STATUS:</div>PLANNING</div>	<div><div>Bedford House</div>125-133 Camden High Street</div> <div><div>London NW1 7JR</div></div> <div><div>T:</div>+44 (0) 20 7485 9170</div> <div><div>F:</div>+44 (0) 20 7485 9171</div> <div><div>E:</div>info@niallmclaughlin.com</div> <div><div>W:</div>www.niallmclaughlin.com</div>	