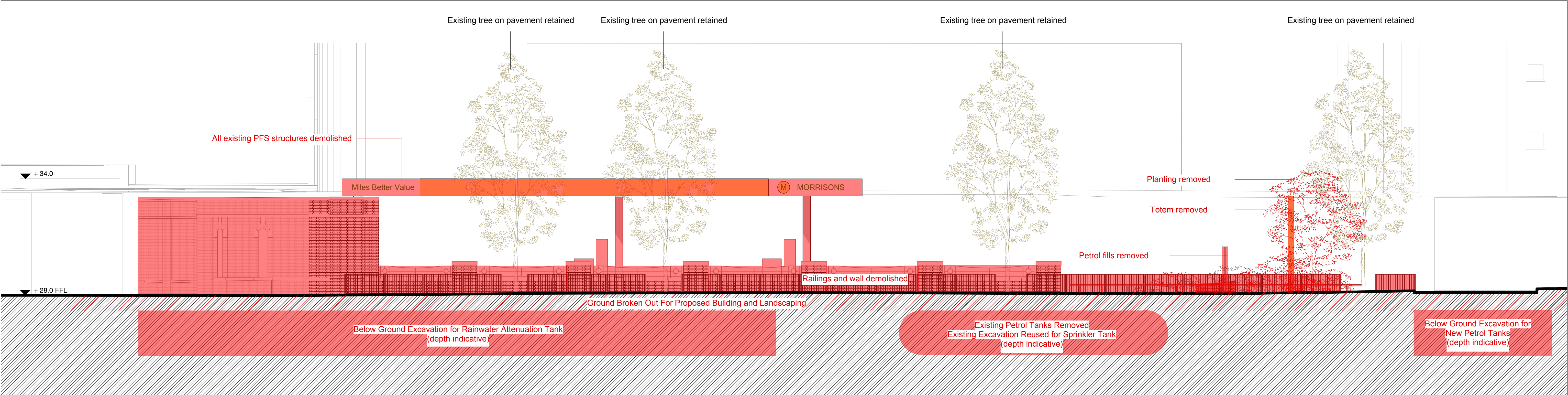
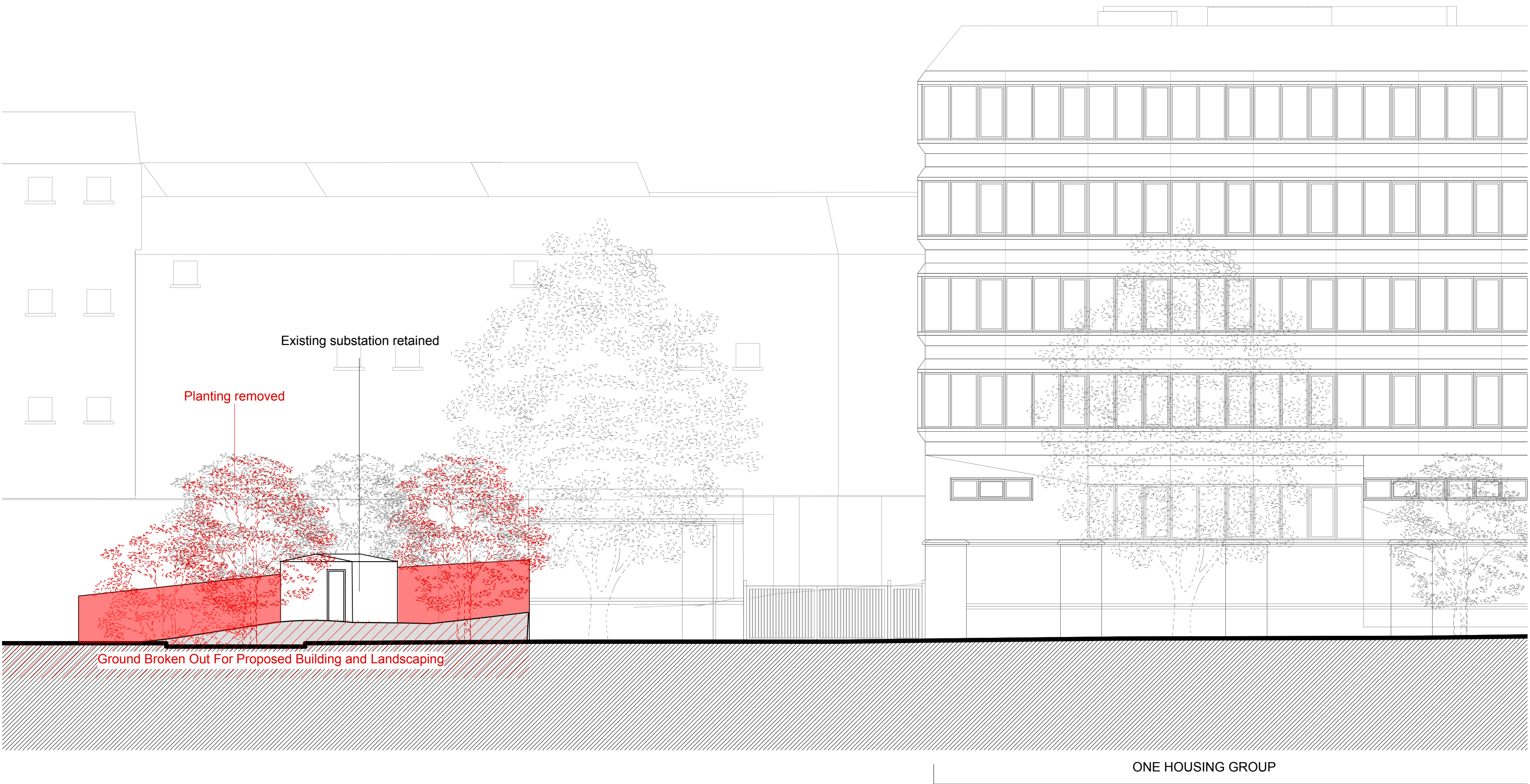


Key	Revision	Date	Description	Notes	Níall McLaughlin Architects		
<div><div></div>Application Site Boundary</div> <div><div></div>Extent of proposed Petrol Filling Station site</div> <div><div></div>Footprint of consented One Housing Group scheme</div> <div><div></div>Refer to information provided by Allies &amp; Morrison and Piercy &amp; Co.</div> <div><div></div>Structure Removed</div> <div><div></div>Landscaping/Feature Removed</div> <div><div></div>Excavation for Tanks</div>				<div><div>SIGNAGE WORDING AND GRAPHICS SHOWN ARE INDICATIVE; EXACT SIGNAGE PROPOSALS TO BE SUBMITTED BY INDIVIDUAL RETAILER. LOCATIONS AND APPROXIMATE SIZES ARE AS SHOWN.</div><div>SURVEY TO BE CARRIED OUT TO DETERMINE EXACT LOCATIONS OF BELOW GROUND SERVICE ROUTES.</div><div>DEVELOPED PTROL FILLING STATION PROPOSALS TO BE APPROVED BY THE PETROLEUM OFFICERS OF THE LONDON FIRE BRIGADE.</div><div>DRAWINGS FOR PURPOSE OF PLANNING APPROVAL ASSESSMENT ONLY.</div></div> <div><div>0210m</div><div></div></div> <div><div>N</div><div></div></div>	<div><div>JOB:</div>1605 - Camden Goods Yard: Petrol Filling Station Site</div> <div><div>CLIENT:</div>Morrisons &amp; Barratt Homes</div> <div><div>SCALE:</div>1:250 @ A1</div> <div><div>DATE FIRST ISSUED:</div>30.06.2017</div> <div><div>DRAWING:</div>Demolition Plan</div> <div><div>REFERENCE:</div>1605-PL-050</div> <div><div>REVISION:</div>-</div> <div><div>STATUS:</div>PLANNING</div>	<div><div>T:</div>+44 (0) 20 7485 9170</div> <div><div>F:</div>+44 (0) 20 7485 9171</div> <div><div>E:</div>info@niallmclaughlin.com</div> <div><div>W:</div>www.niallmclaughlin.com</div>	<div>Bedford House</div> <div>125-133 Camden High Street</div> <div>London NW1 7JR</div>





EXISTING PFS



Key		Revision	Date	Description	Notes	Niall McLaughlin Architects		
<div><div></div><div>Structure demolished/removed</div></div> <div><div></div><div>Ground broken out</div></div>				<div><div><div>· SIGNAGE WORDING AND GRAPHICS SHOWN ARE INDICATIVE: EXACT SIGNAGE PROPOSALS TO BE SUBMITTED BY INDIVIDUAL RETAILER. LOCATIONS AND APPROXIMATE SIZES ARE AS SHOWN.</div><div>· SURVEY TO BE CARRIED OUT TO DETERMINE EXACT LOCATIONS OF BELOW GROUND SERVICE ROUTES.</div><div>· DEVELOPED PTROL FILLING STATION PROPOSALS TO BE APPROVED BY THE PETROLEUM OFFICERS OF THE LONDON FIRE BRIGADE.</div><div>· DRAWINGS FOR PURPOSE OF PLANNING APPROVAL ASSESSMENT ONLY.</div></div><div><div>012.5m</div></div></div>	<div><div>JOB:</div><div>CLIENT:</div><div>SCALE:</div><div>DATE FIRST ISSUED:</div><div>DRAWING:</div><div>REFERENCE:</div><div>REVISION:</div><div>STATUS:</div></div> <div><div>1605 - Camden Goods Yard</div><div>Morrisons &amp; Barratt Homes</div><div>1:100 @ A1</div><div>30.06.2017</div><div>Demolitions North Elevation</div><div>1605-PL-051</div><div>-</div><div>PLANNING</div></div> <div><div>Bedford House</div><div>125-133 Camden High Street</div><div>London NW1 7JR</div><div>T: +44 (0) 20 7485 9170</div><div>F: +44 (0) 20 7485 9171</div><div>E: info@niallmclaughlin.com</div><div>W: www.niallmclaughlin.com</div></div>			