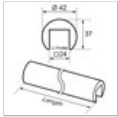




www.s3i.co.uk

## Beech Handrail with Lacquered Finish - Glass Channel Balustrade

### Top Rail in Lacquered Beech for Frameless Glass Channel Balustrade



### Beech Handrail - Lacquered - Glass Channel Balustrade

Available Options	Ø (mm)	Length (mm)	Height (mm)	U Profile (mm)	Code	Price (inc VAT)	
Beech, 2500mm	42	2500	37	24	20.6925.042.40	£96.54	<a href="#">Add</a>

#### Key Features:



Manufactured from beech hardwood with a lacquered finish.



Rubber Handrail Gasket required for installation.



Suitable for DIY cutting to length required.

Beech channel handrail supplied ready to use with a superb lacquered finish, providing an attractive handrail solution for your interior glass balustrade.

Designed to fit neatly on to the top of glass channel balustrade when combined with a rubber handrail gasket (available separately).

To fit mono and laminated glass thickness of 8mm to 21.52mm.

Suitable for indoor use only.

Handrail diameter is 42mm.

Supplied in lengths of 2.5 metres (2500mm).

Produced from environmentally-friendly FSC certified wood.

#### Please Note:

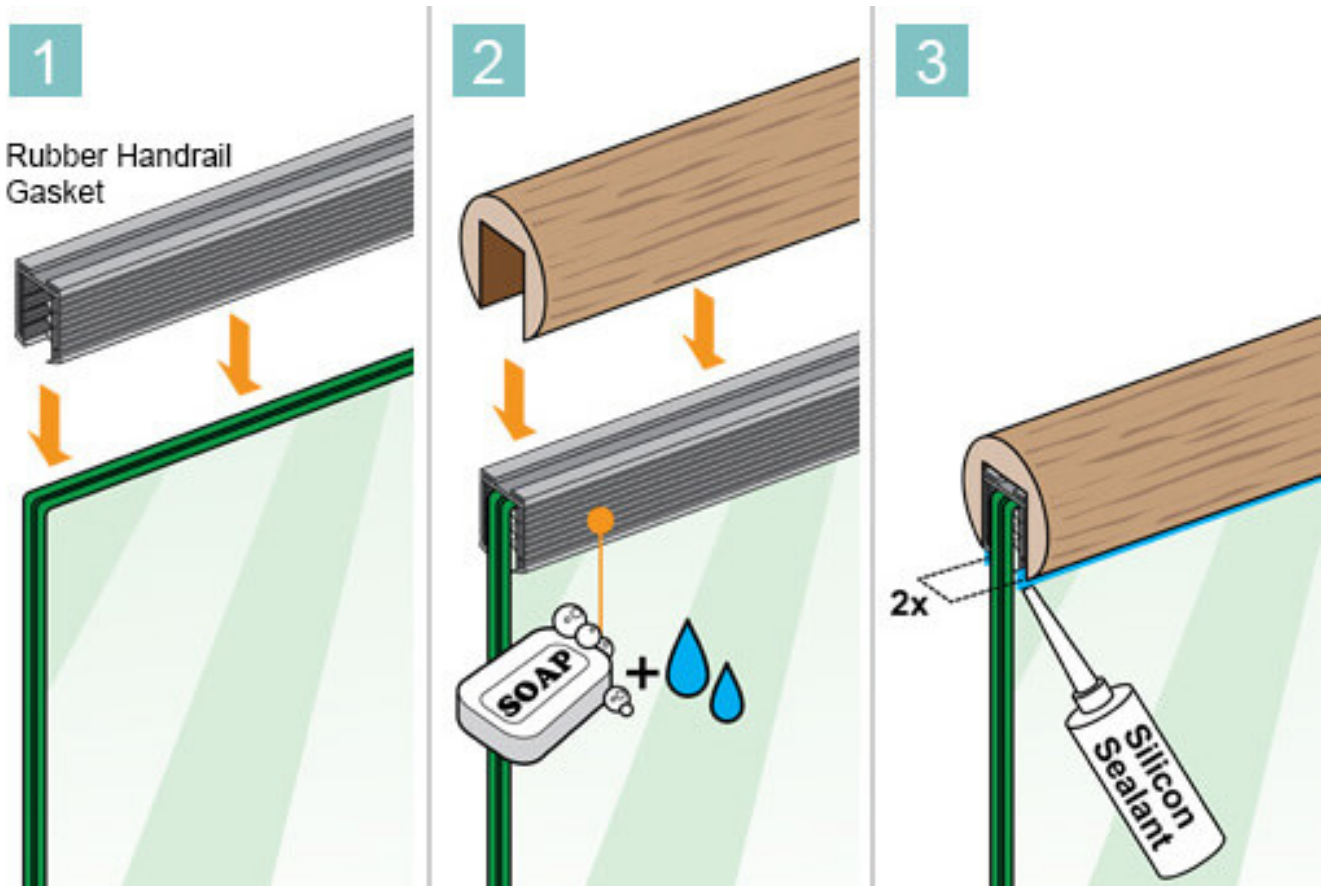


Lengths over 1.8 metres are not eligible for international delivery.  
Please contact us by phone or email and we will try and find you the best solution.

4.8 ★★★★★  
Google  
Customer Reviews

Installation Advice

- 1: Using a 24mm profile Rubber Handrail Gasket to match the glass thickness, simply place gasket on to the top edge of your glass.
- 2: Ensure that the rubber gasket is clean and free from debris, you can now place your beech channel handrail on to the rubber gasket.
- 3: We recommend you use a silicon sealant to secure your handrail in place.



Video: Glass Channel Handrail Installation - S3i Group

Glass Channel Handrail Install

[Video Player Placeholder]

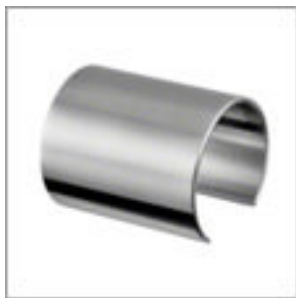
Glass Channel Handrail - Installation Advice and Tips.

You may be interested in...

4.8 ★★★★★  
Google  
Customer Reviews



Stainless steel **End Cap** for beech channel handrail.



**In-line Connector** for beech channel handrail.



**Rubber Handrail Gasket** for glass balustrade top rail.



**Silicone Sealant** - black flexible sealant.