

Trees (n = native, w = wildlife friendly)				
Name	Girth	Root condition	Habit	Number
Pyrus calleryana 'Chanticleer' (w)	20-25cm	Bare root	Conical with white spring flowers and small fruits up to 8m	4
Malus sylvestris (n)	10-12cm	Bare root	Small native crab apple tree up to 12m	3
Sorbus aucuparia (n)	10-12cm	Bare root	Native tree to 12m red berries in autumn	2
Quercus robur 'Fastigata' (w)	12-14cm	Bare root	15m English specimen tree with upright habit	2

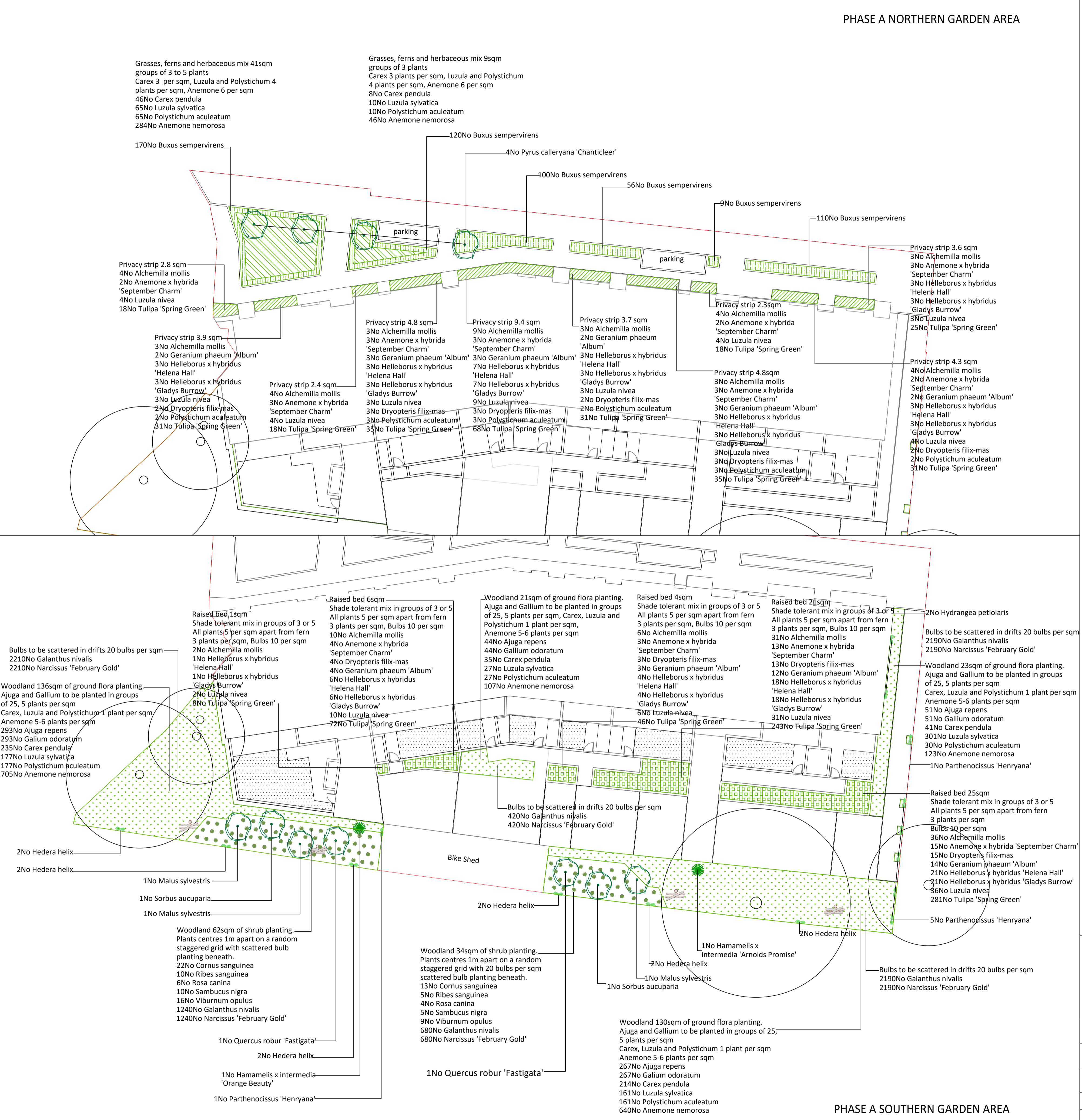
Specimen shrubs (n = native, w = wildlife friendly)					
Name	Pot Size	Height	Habit	Density per sqm	Number
Hamamelis x intermedia 'Arnolds Promise' (w)	15l	180-200cm multistemmed	up to 4m high with good autumn colour and yellow winter flowers	1	1
Hamamelis x intermedia 'Orange Beauty' (w)	15l	180-200cm	up to 4m high with good autumn colour and orange winter flowers	1	1

Shrubs and Perennials (n = native, w = wildlife friendly) BR = bare rooted					
Name	Pot Size	Height	Habit	Density per sqm	Number
Ajuga reptans (n)	2l	20-30cm	Native purple leaved ground cover with blue flowers summer 30cm	5	655
Alchemilla mollis (w)	2l	20-30cm	Perennial with pale green flowers up to 50cm	5	125
Anemone hepensis 'September Charm' (w)	2l	20-30cm	Late summer pink flowers 60cm	5	50
Anemone nemorosa (n)	2l	20-30cm	Woodland white or blue spring flower 50cm	6	1905
Carex pendula (n)	3l	20-40cm	Pendulous sedge up to 1.5m	2	579
Cornus sanguinea (n)	BR	20-40cm	Winter red stems native plant	1	35
Dryopteris filix-mas (n)	5l	30-40cm	Semi evergreen native fern 150cm	3	50
Galium odoratum (n)	2l	20-30cm	Spreading herbaceous perennial with white spring flowers up to 50cm	5	655
Geranium phaeum 'Album' (w)	2l	20-30cm	Summer flowers white clump forming 50cm	5	48
Helleborus x hybridus 'Gladys Burrow' (w)	3l	20-30cm	Deciduous perennial with late winter spring dark pink flowers up to 50cm	5	75
Helleborus x hybridus 'Helena Hall' (w)	3l	20-30cm	Deciduous perennial with late winter spring white to pink flowers up to 50cm	5	75
Luzula nivea (n)	2l	40cm	Evergreen perennial with glossy pale green leaves and white flowers up to 1m	5	125
Luzula sylvatica (n)	2l	40cm	Evergreen perennial with glossy pale green leaves up to 1m	5	470
Polystichum aculeatum (n)	2l	30-40cm	Evergreen native 'Hard Shield' fern up to 1m	3	470
Polystichum aculeatum (n)	3l	30-40cm	Evergreen native 'Hard Shield' fern up to 1m	3	15
Ribes sanguinea (n)	BR	40-60cm	Native currant flowers in spring 2.5m	1	15
Rosa canina (n)	BR	40-60cm	Native climbing rose	1	10
Sambucus nigra (n)	BR	40-60cm	Native shrub with white flowers and berries in autumn	1	15
Viburnum opulus (n)	BR	40-60cm	Native plant May white flowers with good autumn colour, maintain up to 150cm	1	25

Hedging plants (n = native, w = wildlife friendly)					
Name	Pot Size	Height	Habit	Density per lm	Number
Buxus sempervirens (w)	5l	60cm	Evergreen shrub	9	565

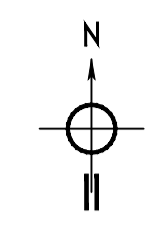
Climbers (n = native, w = wildlife friendly)					
Name	Pot Size	Height	Habit	Density per lm	Number
Parthenocissus 'Henryana' (w)	10l	60cm	Deciduous red to silver/green climber up to 12m	1	7
Hedera helix (n)	10l	60cm	Variiegated large leaved ivy up to 8m	1	10
Hydrangea petiolaris (w)	10l	60cm	Deciduous self supporting climber with white flowers good in shade	1	2

Bulbs (n = native, w = wildlife friendly)					
Name	Pot Size	Mature Height	Habit	Density per sqm	Number
Galanthus nivalis (n)	loose bulb	15cm	Early spring white flowers	16	7200
Narcissus 'February Gold' (w)	loose bulb	50cm	Pale yellow in spring	16	7200
Tulipa 'Spring Green' (w)	loose bulb	50cm	Spring white flower	16	960



PHASE A NORTHERN GARDEN AREA

PHASE A SOUTHERN GARDEN AREA



The planting shall be carried out in the first planting (seeding) season following completion of the development (between December and March inclusive).

All plant stock, plant handling and planting to be undertaken in accordance with the following British Standard Specifications and Code of Practice:

- BS 3936:1992 Part 1 Nursery Stock - Specification for trees and shrubs;
- BS 3936:1998 Part 10 Nursery Stock - Specification for ground cover plants;
- BS 4428:1989 - Code of Practice for General Landscaping Operations (excluding hard surfaces);
- BS 8545:2014 Trees from Nursery to Independence in the Landscape;
- The Code of Practice for Plant Handling 2002 (Horticultural Trades Association).

LEGEND (SOFT WORKS)

- Retained tree
- Heavy standard or semi mature tree
- Multistemmed shrub
- Woodland shrub
- Grasses, ferns and herbaceous mix
- Hedging
- Privacy strips
- Raised beds
- Woodland shrubs
- Woodland ground flora
- Climber
- Ornamental Lawn Turf- Arena Bargold
- Log pile refugia - site won timber as hibernacular

Notes  
Drawing for planning purposes

Plan to be read in conjunction with the engineer and landscape drawings:

No measurements to be scaled off drawing. Worked from figured dimensions only.

All dimensions shown on drawing are shown in millimetres unless otherwise stated.

All dimensions and levels to be checked on site. Landscape Architect to be notified immediately of any discrepancies prior to the commencement of works.

**JO WILD LANDSCAPES**  
Landscape Architect  
Tel: 07867 336 117  
Email: jtmwild@btinternet.com

Client Hill Partnerships Ltd	Project Agar Grove - Phase 1A
Drawing Title: Soft works	Date: August 2016
Scale: 1:200 @ A2	Revision Number: C
Drawing Number: 1042-01	