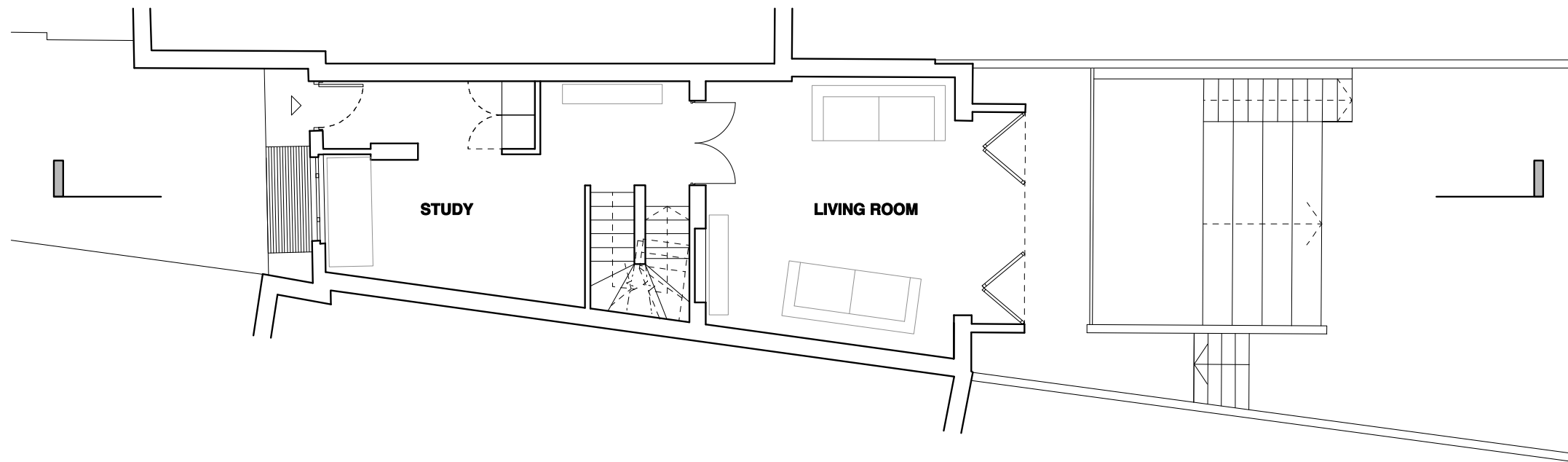
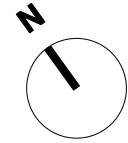


**General Notes**  
 Do not scale from this drawing  
 All dimensions to be verified on site  
 To be read in conjunction with all relevant documents  
 In the event of discrepancy notify the Architect immediately  
 This document is copyright of Hugh Cullum Architects Ltd

**Issue Status**  
 SK Sketch            E Existing Condition  
 D Design            P Permissions  
 T Tender            C Contract



(\_): Issued for planning (05.07.17/OA/HC)  
 Revision: Information (date/drawn by/checked by)

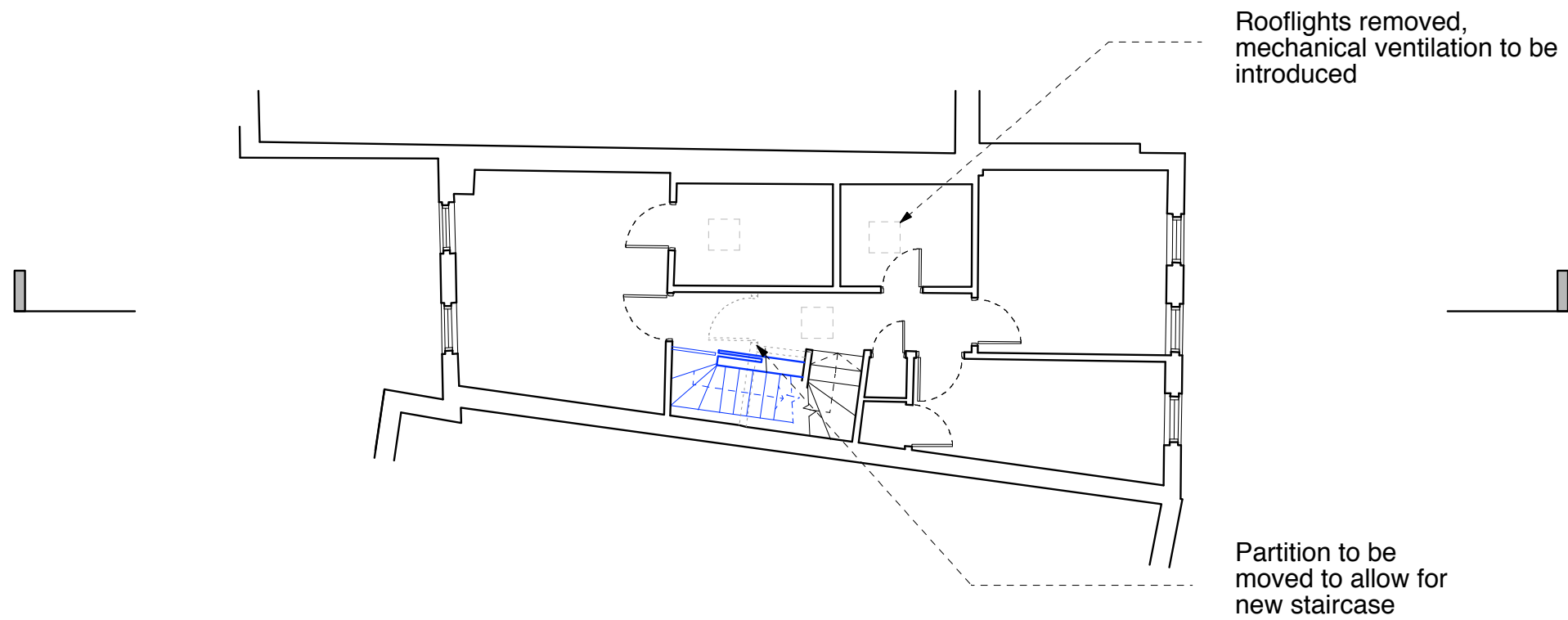
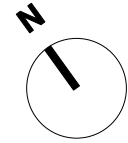
**HUGH CULLUM Upper Park Road, NW3 2UT**  
 ARCHITECTS LTD  
 Bloomsbury Design Proposed  
 61b Judd Street Ground Floor Plan  
 London WC1H 9QT 1:50@A1, 1:100@A3 May 2017  
 t 020 7383 7647  
 f 020 7387 7645  
 mail@hughcullum.com **UP26A-P011(\_)**

*Note: This floor is to remain as is.*



**General Notes**  
 Do not scale from this drawing  
 All dimensions to be verified on site  
 To be read in conjunction with all relevant documents  
 In the event of discrepancy notify the Architect immediately  
 This document is copyright of Hugh Cullum Architects Ltd

**Issue Status**  
 SK Sketch                    E Existing Condition  
 D Design                    P Permissions  
 T Tender                    C Contract



Rooflights removed,  
 mechanical ventilation to be  
 introduced

Partition to be  
 moved to allow for  
 new staircase

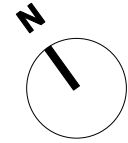
(\_): Issued for planning (05.07.17/OA/HC)  
 Revision: Information (date/drawn by/checked by)

**HUGH CULLUM Upper Park Road, NW3 2UT**  
 ARCHITECTS LTD  
 Bloomsbury Design Proposed  
 61b Judd Street First Floor Plan  
 London WC1H 9QT 1:50@A1, 1:100@A3 May 2017  
 t 020 7383 7647  
 f 020 7387 7645  
 mail@hughcullum.com UP26A-P012(\_)

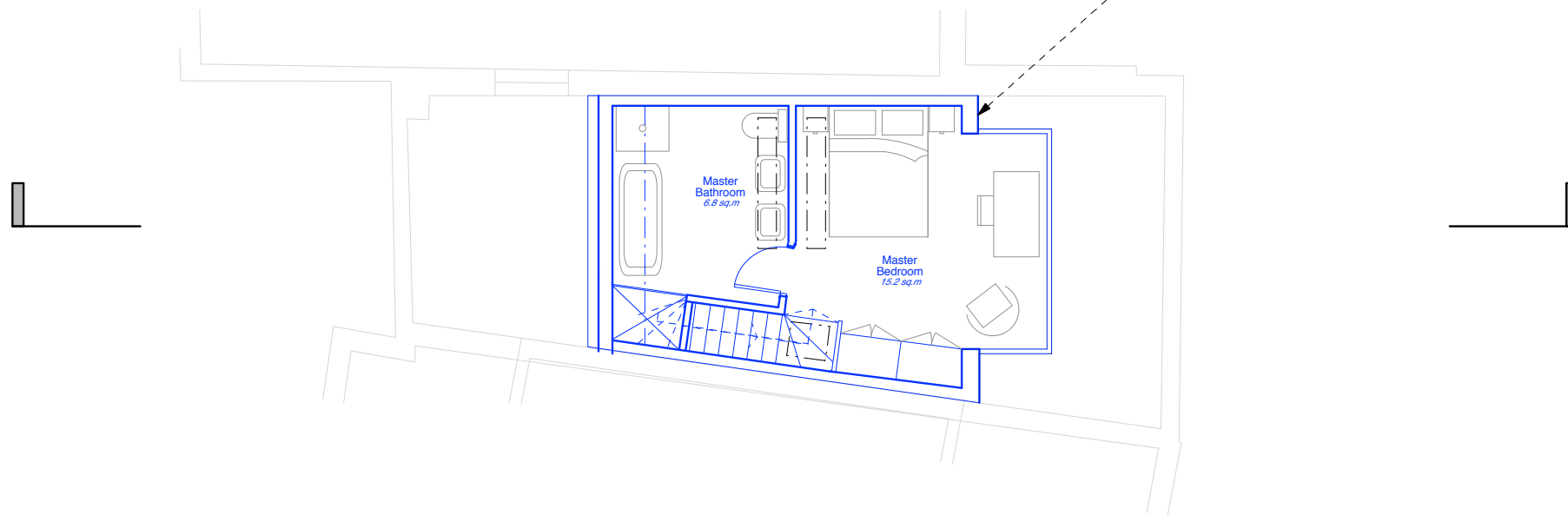


**General Notes**  
 Do not scale from this drawing  
 All dimensions to be verified on site  
 To be read in conjunction with all relevant documents  
 In the event of discrepancy notify the Architect immediately  
 This document is copyright of Hugh Cullum Architects Ltd

**Issue Status**  
 SK Sketch                    E Existing Condition  
 D Design                    P Permissions  
 T Tender                    C Contract



Roof materials to match  
 neighbouring - slate tiles



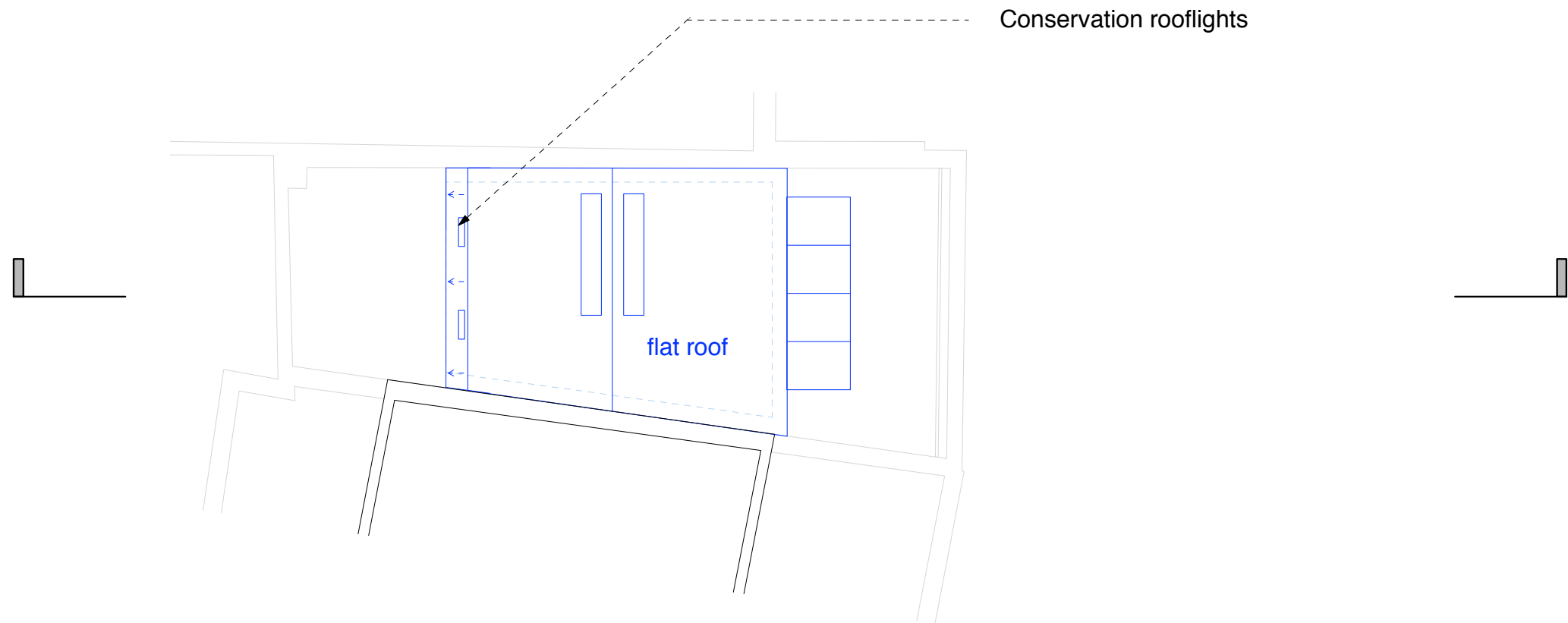
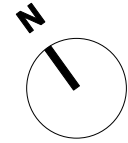
(\_): Issued for pre-planning (05.07.17/OA/HC)  
 Revision: Information (date/drawn by/checked by)



**HUGH CULLUM Upper Park Road, NW3 2UT**  
 ARCHITECTS LTD  
 Bloomsbury Design Proposed  
 61b Judd Street First Floor Plan  
 London WC1H 9QT 1:50@A1, 1:100@A3 May 2017  
 t 020 7383 7647  
 f 020 7387 7645  
 mail@hughcullum.com UP26A-P013(\_)

**General Notes**  
 Do not scale from this drawing  
 All dimensions to be verified on site  
 To be read in conjunction with all relevant documents  
 In the event of discrepancy notify the Architect immediately  
 This document is copyright of Hugh Cullum Architects Ltd

**Issue Status**  
 SK Sketch                    E Existing Condition  
 D Design                    P Permissions  
 T Tender                    C Contract



(\_): Issued for pre-planning (06.06.17/OA/HC)  
 Revision: Information (date/drawn by/checked by)

**HUGH CULLUM Upper Park Road, NW3 2UT**  
 ARCHITECTS LTD  
 Bloomsbury Design Proposed  
 61b Judd Street Roof Plan  
 London WC1H 9QT 1:50@A1, 1:100@A3 May 2017  
 t 020 7383 7647  
 f 020 7387 7645  
 mail@hughcullum.com UP26A-P014(\_)





-parapet to be reinstated with the appropriate cornice to match period and context

**General Notes**  
 Do not scale from this drawing  
 All dimensions to be verified on site  
 To be read in conjunction with all relevant documents  
 In the event of discrepancy notify the Architect immediately  
 This document is copyright of Hugh Cullum Architects Ltd

**Issue Status**

SK	Sketch	E	Existing Condition
D	Design	P	Permissions
T	Tender	C	Contract

(\_): Issued for planning (05.07.17/OA/HC)  
 Revision: Information (date/drawn by/checked by)

**HUGH CULLUM Upper Park Road, NW3 2UT**  
 ARCHITECTS LTD  
 Bloomsbury Design Proposed  
 61b Judd Street Front Elevation  
 London WC1H 9QT 1:50@A1, 1:100@A3 May 2017  
 t 020 7383 7647  
 f 020 7387 7645  
 mail@hughcullum.com UP26A-P020(\_)





-parapet to be slightly raised  
with the appropriate cornice to  
match period and context

**General Notes**  
Do not scale from this drawing  
All dimensions to be verified on site  
To be read in conjunction with all relevant documents  
In the event of discrepancy notify the Architect immediately  
This document is copyright of Hugh Cullum Architects Ltd

**Issue Status**

SK	Sketch	E	Existing Condition
D	Design	P	Permissions
T	Tender	C	Contract

(\_): Issued for planning (05.07.17/OA/HC)  
Revision: Information (date/drawn by/checked by)

**HUGH CULLUM Upper Park Road, NW3 2UT**  
ARCHITECTS LTD  
Bloomsbury Design Proposed  
61b Judd Street Rear Elevation  
London WC1H 9QT 1:50@A1, 1:100@A3 May 2017  
t 020 7383 7647  
f 020 7387 7645  
mail@hughcullum.com **UP26A-P021(\_)**



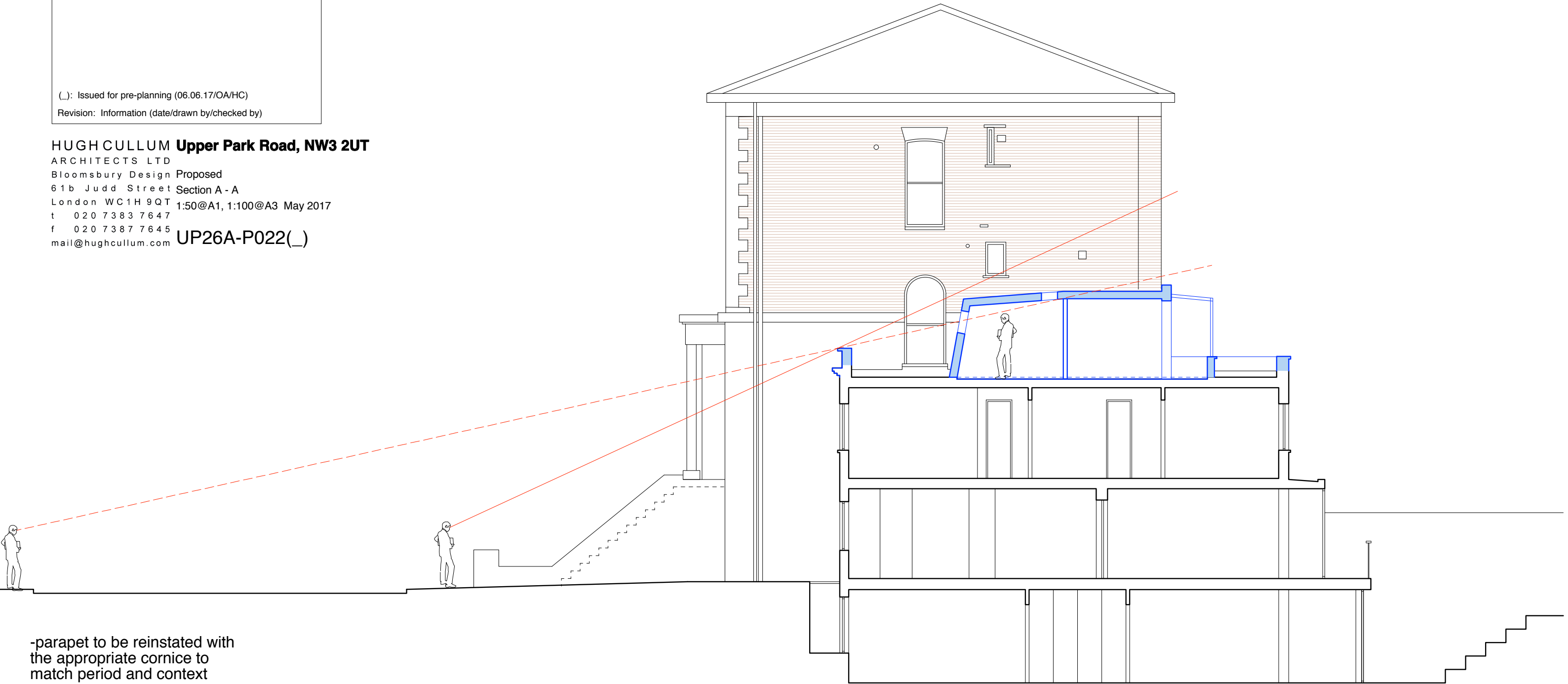
**General Notes**  
 Do not scale from this drawing  
 All dimensions to be verified on site  
 To be read in conjunction with all relevant documents  
 In the event of discrepancy notify the Architect immediately  
 This document is copyright of Hugh Cullum Architects Ltd

**Issue Status**  
 SK Sketch            E Existing Condition  
 D Design            P Permissions  
 T Tender            C Contract

(\_): Issued for pre-planning (06.06.17/OA/HC)  
 Revision: Information (date/drawn by/checked by)

**HUGH CULLUM Upper Park Road, NW3 2UT**

ARCHITECTS LTD  
 Bloomsbury Design Proposed  
 61b Judd Street Section A - A  
 London WC1H 9QT 1:50@A1, 1:100@A3 May 2017  
 t 020 7383 7647  
 f 020 7387 7645  
 mail@hughcullum.com UP26A-P022(\_)



-parapet to be reinstated with the appropriate cornice to match period and context

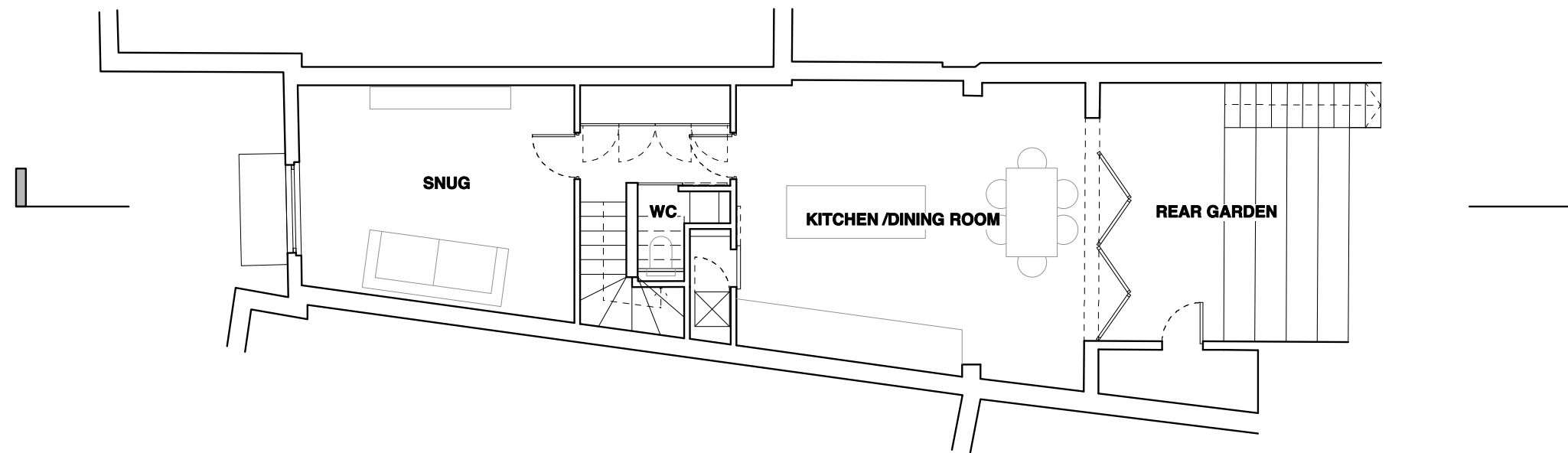
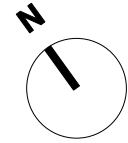
-mansard roof only partially visible from opposite street

-mansard roof with minimal internal height and sloping in such way that it would be inconspicuous from the street.

0 5 15 M

**General Notes**  
 Do not scale from this drawing  
 All dimensions to be verified on site  
 To be read in conjunction with all relevant documents  
 In the event of discrepancy notify the Architect immediately  
 This document is copyright of Hugh Cullum Architects Ltd

**Issue Status**  
 SK Sketch                    E Existing Condition  
 D Design                    P Permissions  
 T Tender                    C Contract



(\_): Issued for planning (05.07.17/OA/HC)  
 Revision: Information (date/drawn by/checked by)

**HUGH CULLUM Upper Park Road, NW3 2UT**  
 ARCHITECTS LTD  
 Bloomsbury Design Proposed  
 61b Judd Street Lower Ground Floor Plan  
 London WC1H 9QT 1:50@A1, 1:100@A3 May 2017  
 t 020 7383 7647  
 f 020 7387 7645  
 mail@hughcullum.com UP26A-P010(\_)

*Note: This floor is to remain as is.*

