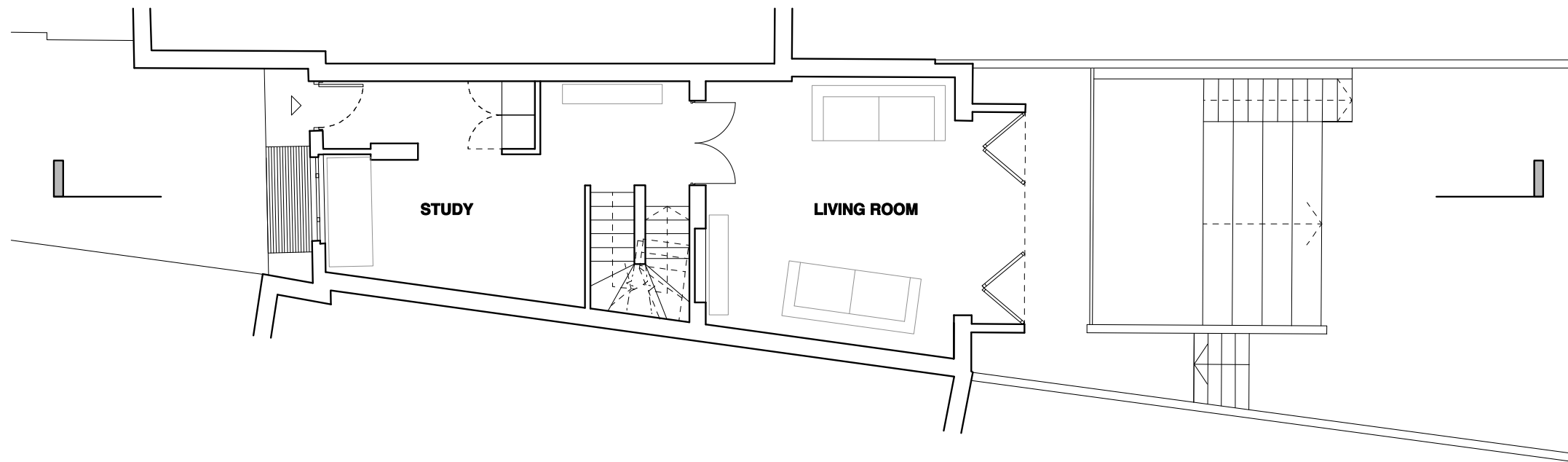
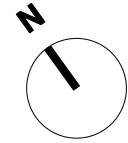


General Notes
 Do not scale from this drawing
 All dimensions to be verified on site
 To be read in conjunction with all relevant documents
 In the event of discrepancy notify the Architect immediately
 This document is copyright of Hugh Cullum Architects Ltd

Issue Status
 SK Sketch E Existing Condition
 D Design P Permissions
 T Tender C Contract



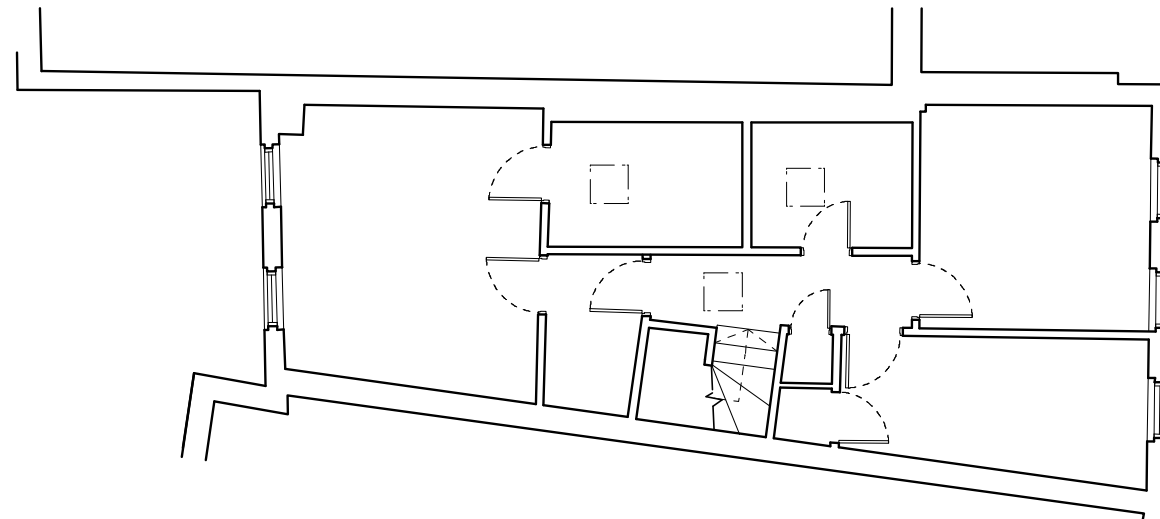
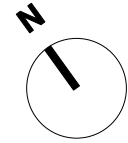
(_): Issued for planning (05.07.17/OA/HC)
 Revision: Information (date/drawn by/checked by)

HUGH CULLUM Upper Park Road, NW3 2UT
 ARCHITECTS LTD
 Bloomsbury Design Existing Condition
 61b Judd Street Ground Floor Plan
 London WC1H 9QT 1:50@A1, 1:100@A3 May 2017
 t 020 7383 7647
 f 020 7387 7645
 mail@hughcullum.com UP26A-E011(_)



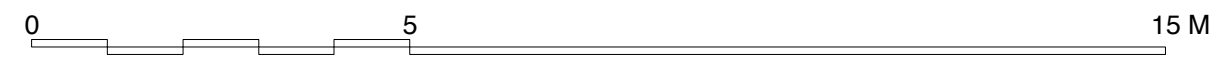
General Notes
Do not scale from this drawing
All dimensions to be verified on site
To be read in conjunction with all relevant documents
In the event of discrepancy notify the Architect immediately
This document is copyright of Hugh Cullum Architects Ltd

Issue Status
SK Sketch E Existing Condition
D Design P Permissions
T Tender C Contract



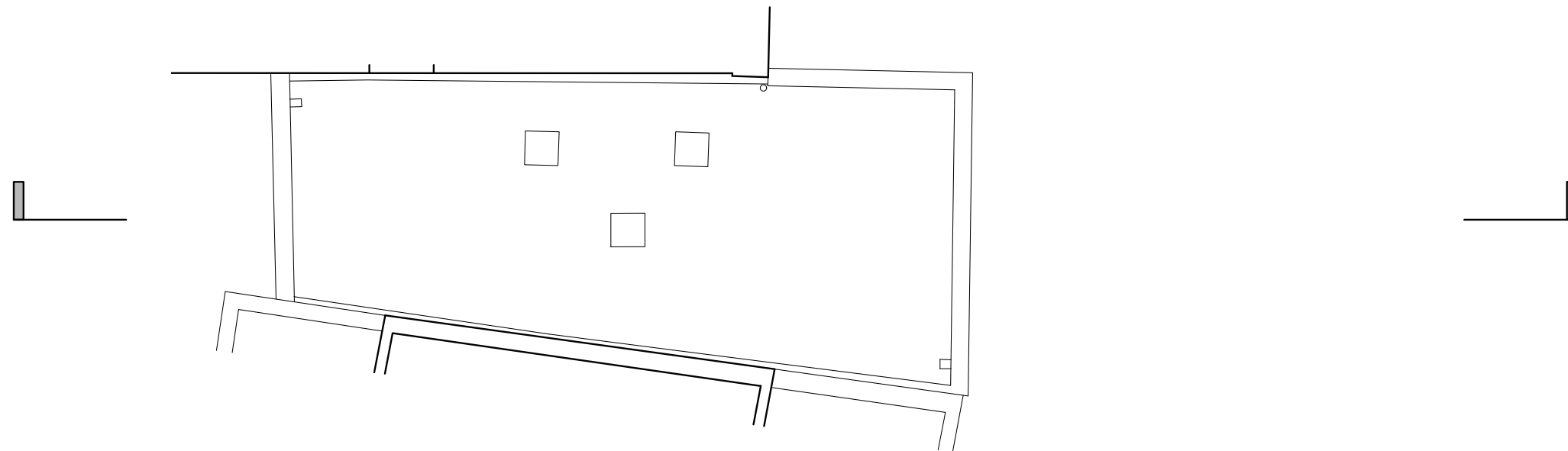
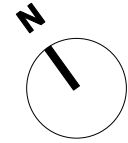
(_): Issued for planning (05.07.17/OA/HC)
Revision: Information (date/drawn by/checked by)

HUGH CULLUM Upper Park Road, NW3 2UT
ARCHITECTS LTD
Bloomsbury Design Existing Condition
61b Judd Street First Floor Plan
London WC1H 9QT 1:50@A1, 1:100@A3 May 2017
t 020 7383 7647
f 020 7387 7645
mail@hughcullum.com **UP26A-E012(_)**



General Notes
 Do not scale from this drawing
 All dimensions to be verified on site
 To be read in conjunction with all relevant documents
 In the event of discrepancy notify the Architect immediately
 This document is copyright of Hugh Cullum Architects Ltd

Issue Status
 SK Sketch E Existing Condition
 D Design P Permissions
 T Tender C Contract



(_): Issued for planning (05.07.17/OA/HC)
 Revision: Information (date/drawn by/checked by)

HUGH CULLUM Upper Park Road, NW3 2UT
 ARCHITECTS LTD
 Bloomsbury Design Existing Condition
 61b Judd Street Roof Plan
 London WC1H 9QT 1:50@A1, 1:100@A3 May 2017
 t 020 7383 7647
 f 020 7387 7645
 mail@hughcullum.com **UP26A-E013(_)**



General Notes
 Do not scale from this drawing
 All dimensions to be verified on site
 To be read in conjunction with all relevant documents
 In the event of discrepancy notify the Architect immediately
 This document is copyright of Hugh Cullum Architects Ltd

Issue Status

SK	Sketch	E	Existing Condition
D	Design	P	Permissions
T	Tender	C	Contract



(_): Issued for planning (05.07.17/OA/HC)

Revision: Information (date/drawn by/checked by)

HUGH CULLUM Upper Park Road, NW3 2UT
 ARCHITECTS LTD
 Bloomsbury Design Existing Condition
 61b Judd Street Front Elevation
 London WC1H 9QT 1:50@A1, 1:100@A3 May 2017
 t 020 7383 7647
 f 020 7387 7645
 mail@hughcullum.com UP26A-E020(_)





General Notes
 Do not scale from this drawing
 All dimensions to be verified on site
 To be read in conjunction with all relevant documents
 In the event of discrepancy notify the Architect immediately
 This document is copyright of Hugh Cullum Architects Ltd

Issue Status

SK	Sketch	E	Existing Condition
D	Design	P	Permissions
T	Tender	C	Contract

(_): Issued for planning (05.07.17/OA/HC)
 Revision: Information (date/drawn by/checked by)

HUGH CULLUM Upper Park Road, NW3 2UT
 ARCHITECTS LTD
 Bloomsbury Design Proposed
 61b Judd Street Rear Elevation
 London WC1H 9QT 1:50@A1, 1:100@A3 May 2017
 t 020 7383 7647
 f 020 7387 7645
 mail@hughcullum.com UP26A-E021(_)



General Notes
Do not scale from this drawing
All dimensions to be verified on site
To be read in conjunction with all relevant documents
In the event of discrepancy notify the Architect immediately
This document is copyright of Hugh Cullum Architects Ltd

Issue Status
SK Sketch E Existing Condition
D Design P Permissions
T Tender C Contract

(_): Issued for planning (05.07.17/OA/HC)

Revision: Information (date/drawn by/checked by)

HUGH CULLUM Upper Park Road, NW3 2UT

ARCHITECTS LTD

Bloomsbury Design Existing Condition

61b Judd Street Section A - A

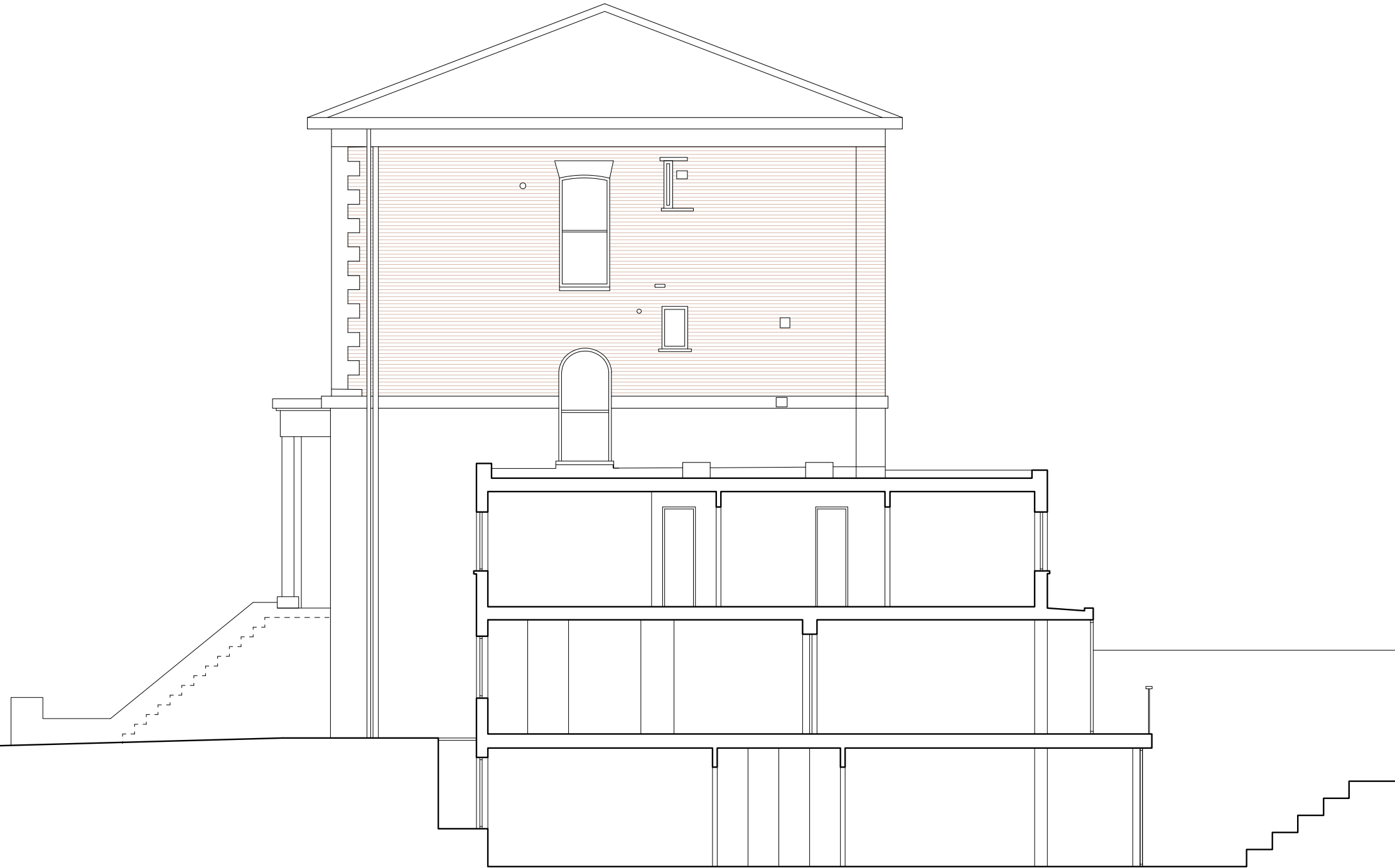
London WC1H 9QT 1:50@A1, 1:100@A3 May 2017

t 020 7383 7647

f 020 7387 7645

mail@hughcullum.com

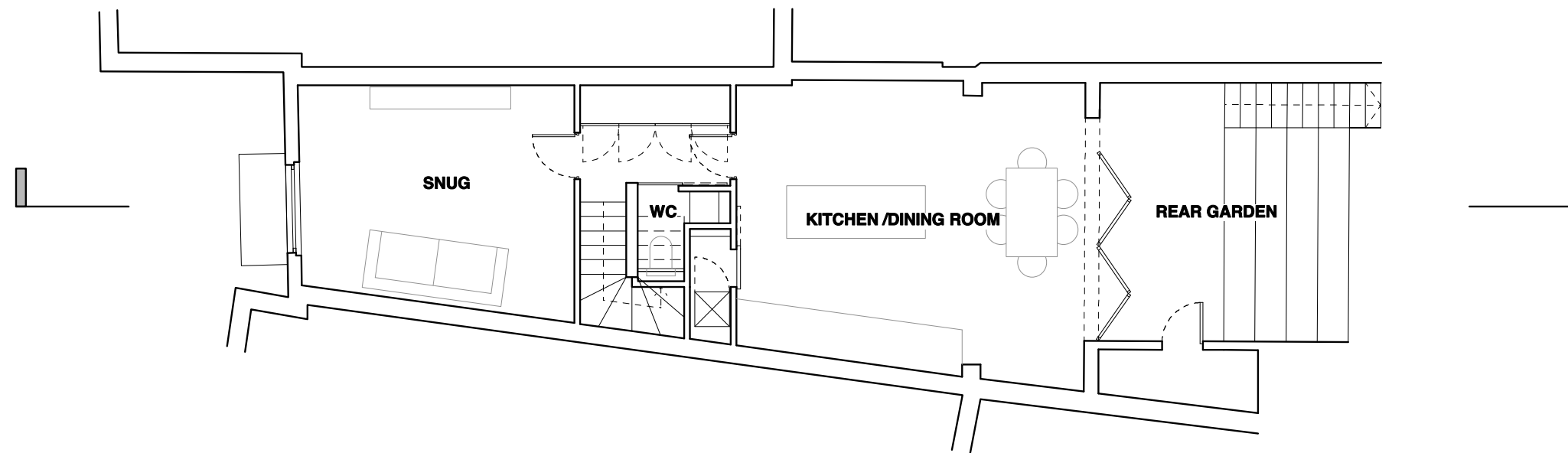
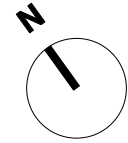
UP26A-E022(_)



0 5 15 M

General Notes
 Do not scale from this drawing
 All dimensions to be verified on site
 To be read in conjunction with all relevant documents
 In the event of discrepancy notify the Architect immediately
 This document is copyright of Hugh Cullum Architects Ltd

Issue Status
 SK Sketch E Existing Condition
 D Design P Permissions
 T Tender C Contract



(_): Issued for Planning (05.07.17/OA/HC)
 Revision: Information (date/drawn by/checked by)

HUGH CULLUM Upper Park Road, NW3 2UT
 ARCHITECTS LTD
 Bloomsbury Design Existing Condition
 61b Judd Street Lower Ground Floor Plan
 London WC1H 9QT 1:50@A1, 1:100@A3 May 2017
 t 020 7383 7647
 f 020 7387 7645
 mail@hughcullum.com UP26A-E010(_)

