

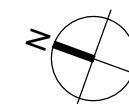
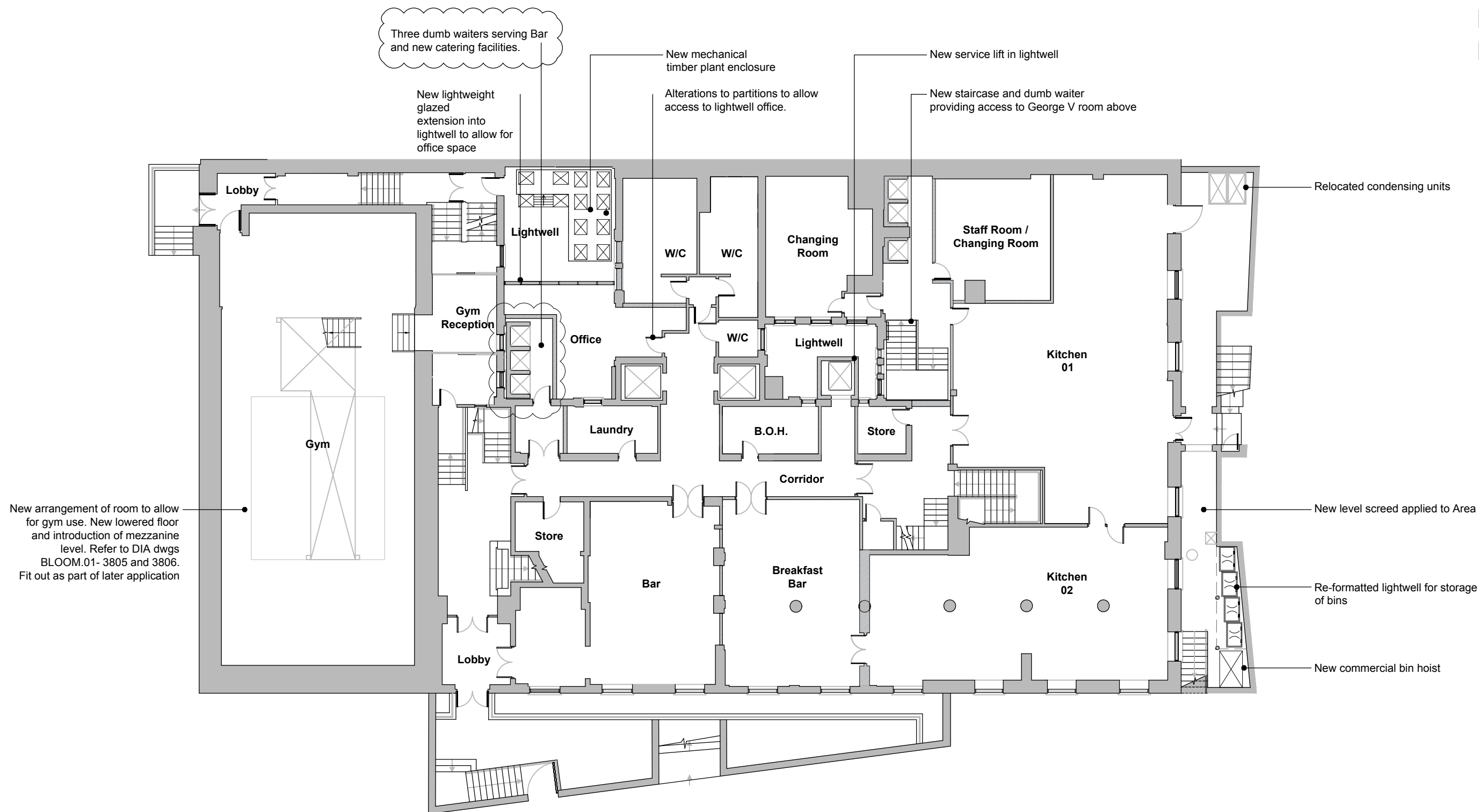


All drawings based on survey by others

Key:

 Existing fabric

 Proposed wall



ISSUED FOR STATUTORY
COMMENT

01	BASEMENT PLAN - AS PROPOSED
2011	1:200 @ A3

Notes:	
1	Any dwg format drawing is to be read only in conjunction with and at the scale of the accompanying pdf.
2	Status 'C' drawing (Construction): All dimensions are to be checked on site by the contractor, scaling is for Planning purposes only. Unless otherwise indicated, all dimensions are in millimeters. All information on this drawing is to be read in conjunction with the relevant Donald Insall Associates specification and trade contractors' drawings and information by specialists. In the event of any query, please contact us immediately.
3	This drawing contains survey information by others and is to be used solely for the purposes for which it was issued.

						-	01.06.17	CXR	AEF	INITIAL ISSUE
						-	22.08.16	BXR	AEF	INITIAL ISSUE
Rev	Date	Dwn	Auth	Revision		Rev	Date	Dwn	Auth	Revision

Drawing Status
F Feasibility
S Sketch Design
D Design
P Planning
B Building Control
W Working Drawing
M Measurement
T Tender
C Construction
R Record

BLOOMSBURY HOTEL
WC1B 3NN

BASEMENT FLOOR PLAN
AS PROPOSED

Donald Insall Associates
Chartered Architects and Historic Building Consultants

12 Devonshire Street, London W1G 7AB
T: (+44)20 7245 9888 www.insall-architects.co.uk

Project BLOOM.01			No 2011	
Scale			Status	Rev
(A3)	1:	200	P	A