

Tree protection plan

Location of trees, categorisation & protection/management proposals at 2 Provost Road, Chalk Farm, London

Permission is granted to scale from this drawing for Local Authority Planning Approval purposes relating to tree protection measures only. Where applicable this drawing is to be read in conjunction with the arboricultural report. This drawing is the copyright of Barrell Tree Consultancy 2017. ©

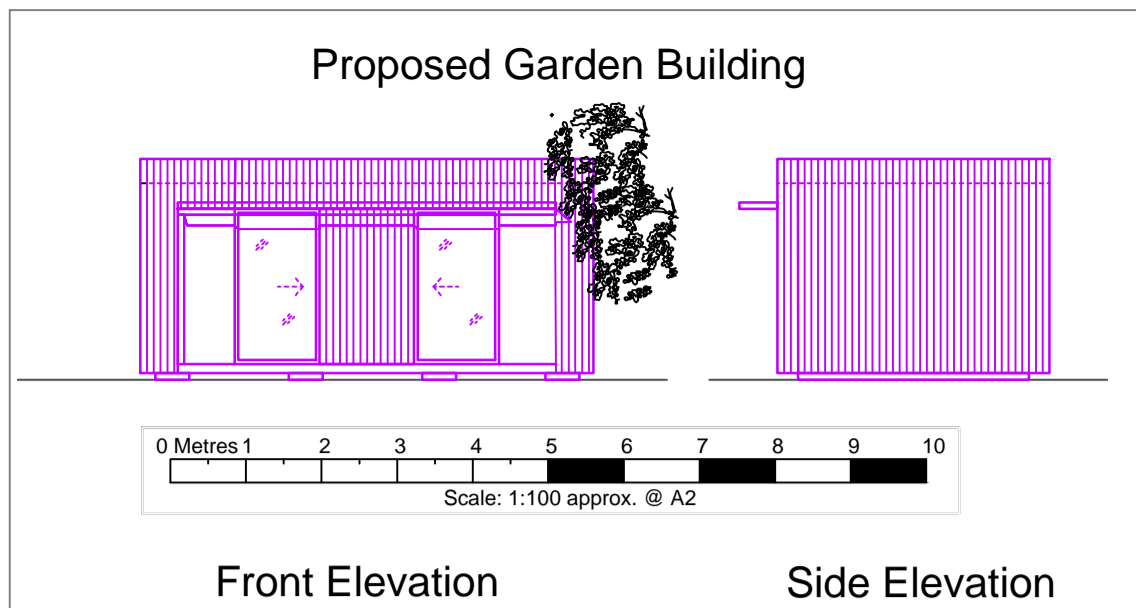
This drawing to be reproduced in colour only.

Barrell Plan Ref: 16387-BT2

Provided Plan Refs: PR002 -E002() -Site Plan with Outline.pdf, PR002 -P002 Proposed site Plan.pdf & PR002 -P025() Proposed garden building Plan ELvs Sects.pdf (All plans converted pdfs)



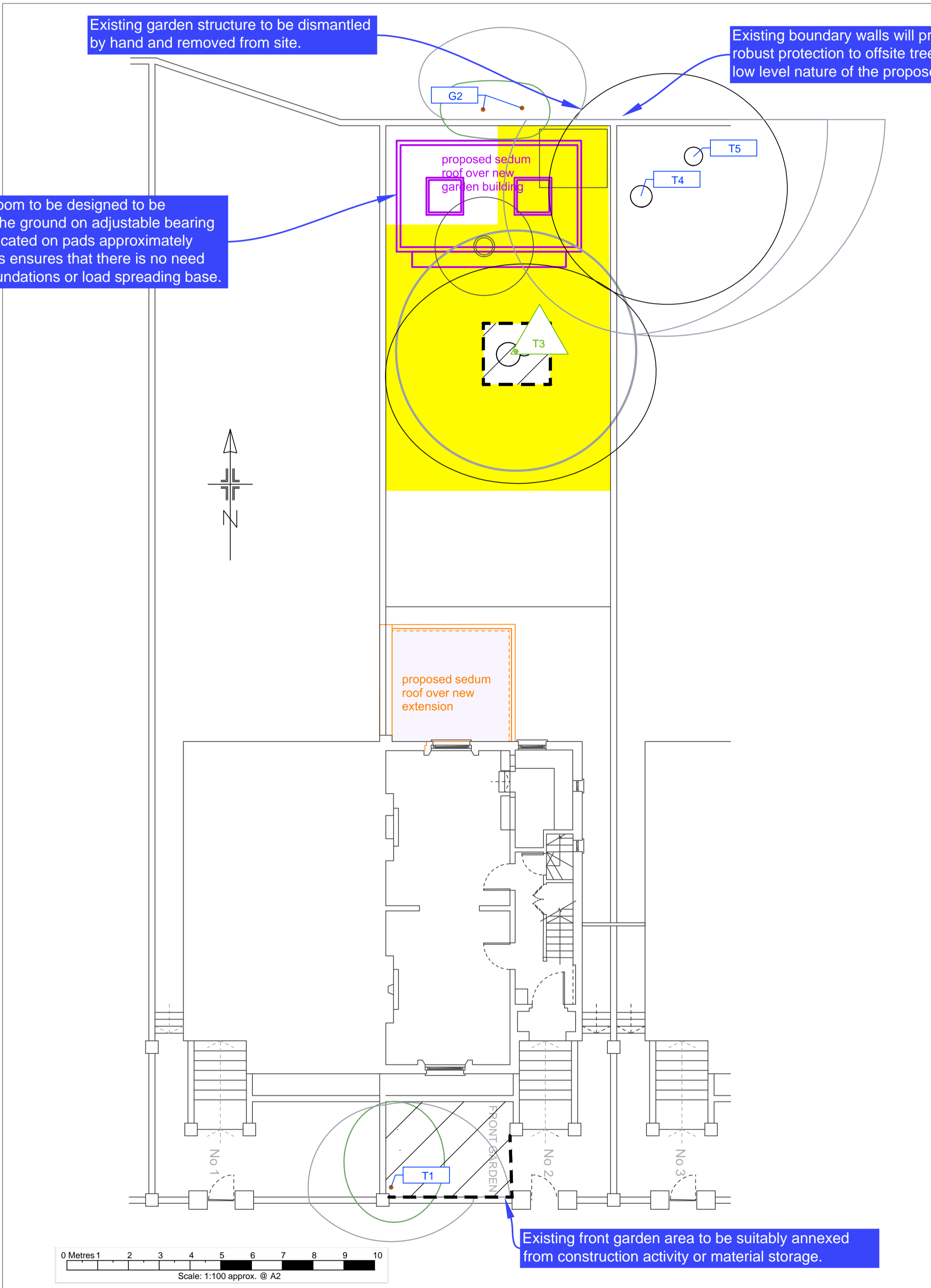
Field House, Fordingbridge Business Park,
Ashford Road, Fordingbridge SP6 1BY
Tel: 01425 651470 Fax: 01425 653449
www.barrelltreecare.co.uk



Existing garden structure to be dismantled by hand and removed from site.

Existing boundary walls will provide suitably robust protection to offsite trees given the low level nature of the proposed changes.

Proposed garden room to be designed to be suspended above the ground on adjustable bearing shoes, which are located on pads approximately 2metres apart. This ensures that there is no need for conventional foundations or load spreading base.



Existing front garden area to be suitably annexed from construction activity or material storage.

	BS category B	Trees of moderate quality		Construction exclusion zone (CEZ) to be protected by fencing
	BS category C	Trees of low quality		installation of ground protection
	Proposed garden room footprint			Root protection area (RPA) boundary for category B tree
	Proposed extension			Root protection area (RPA) boundaries for category C trees
	Estimated tree positions not included on original land survey and/or adjusted crown spreads			

Tree schedule				
Tree No	Species	Category	RPA Radius	Tree Works
All retained trees				Carry out safety check and lift over site to 3-4m as necessary.
T1	Cherry	C	See Tree Protection Plan BT2	-
G2	Elder	C	See Tree Protection Plan BT2	-
T3	Birch	B	3.9	-
T4	Cypress	C	See Tree Protection Plan BT2	-
T5	Cypress	C	See Tree Protection Plan BT2	-