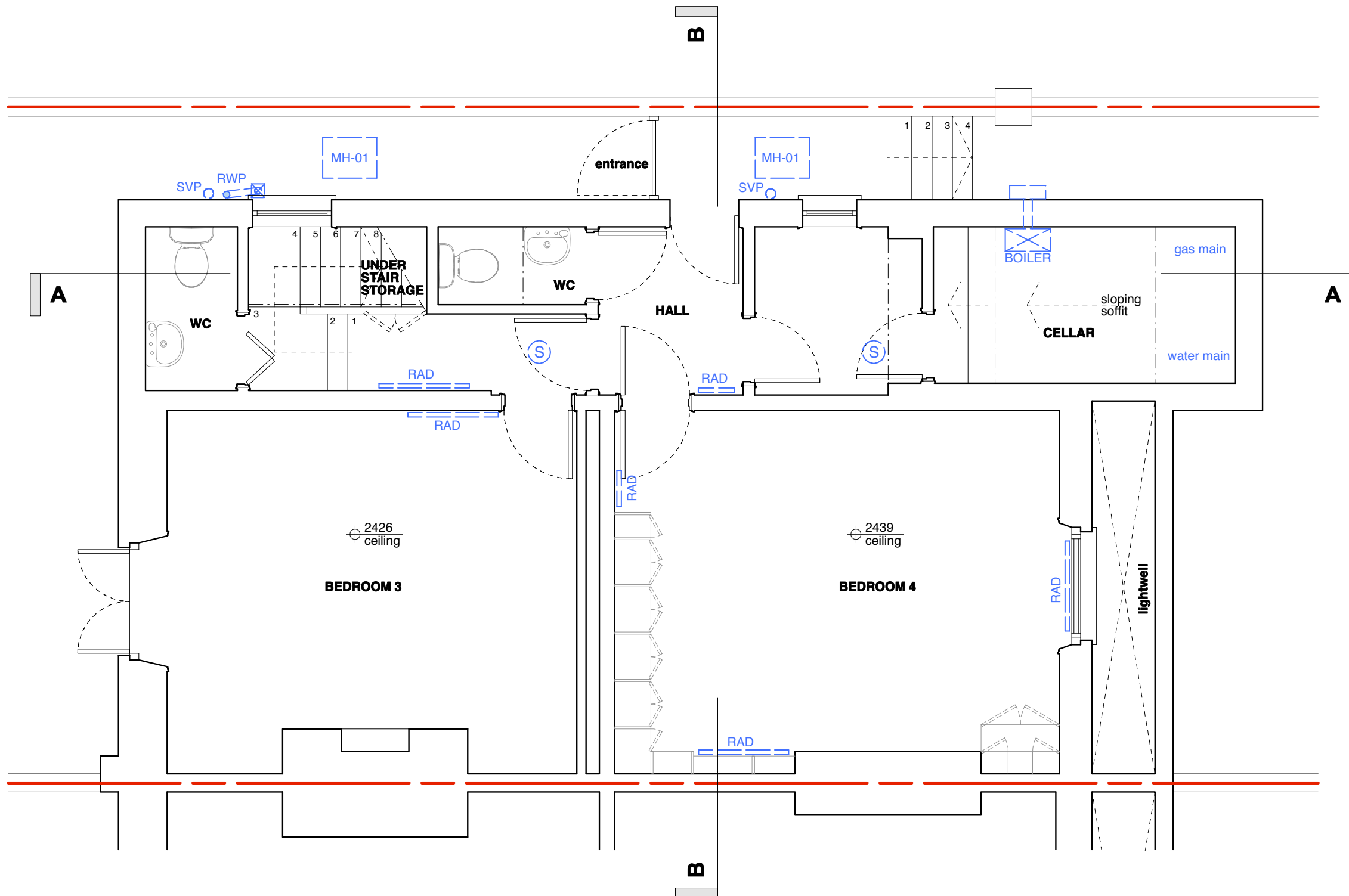


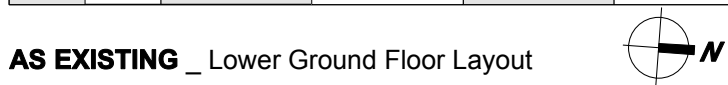
**General Notes**  
 Do not scale from this drawing  
 All dimensions to be verified on site  
 To be read in conjunction with all relevant documents  
 In the event of discrepancy notify the Architect immediately  
 This document is copyright of Hugh Cullum Architects Ltd

**Issue Status**  
 SK Sketch E Existing Condition  
 D Design P Permissions  
 T Tender C Contract



(\_: Revision Information (00.00.02/AA/BB)  
 Revision: Information (date/drawn by/checked by)

0m 0.5m 1m 5m



**AS EXISTING** \_ Lower Ground Floor Layout

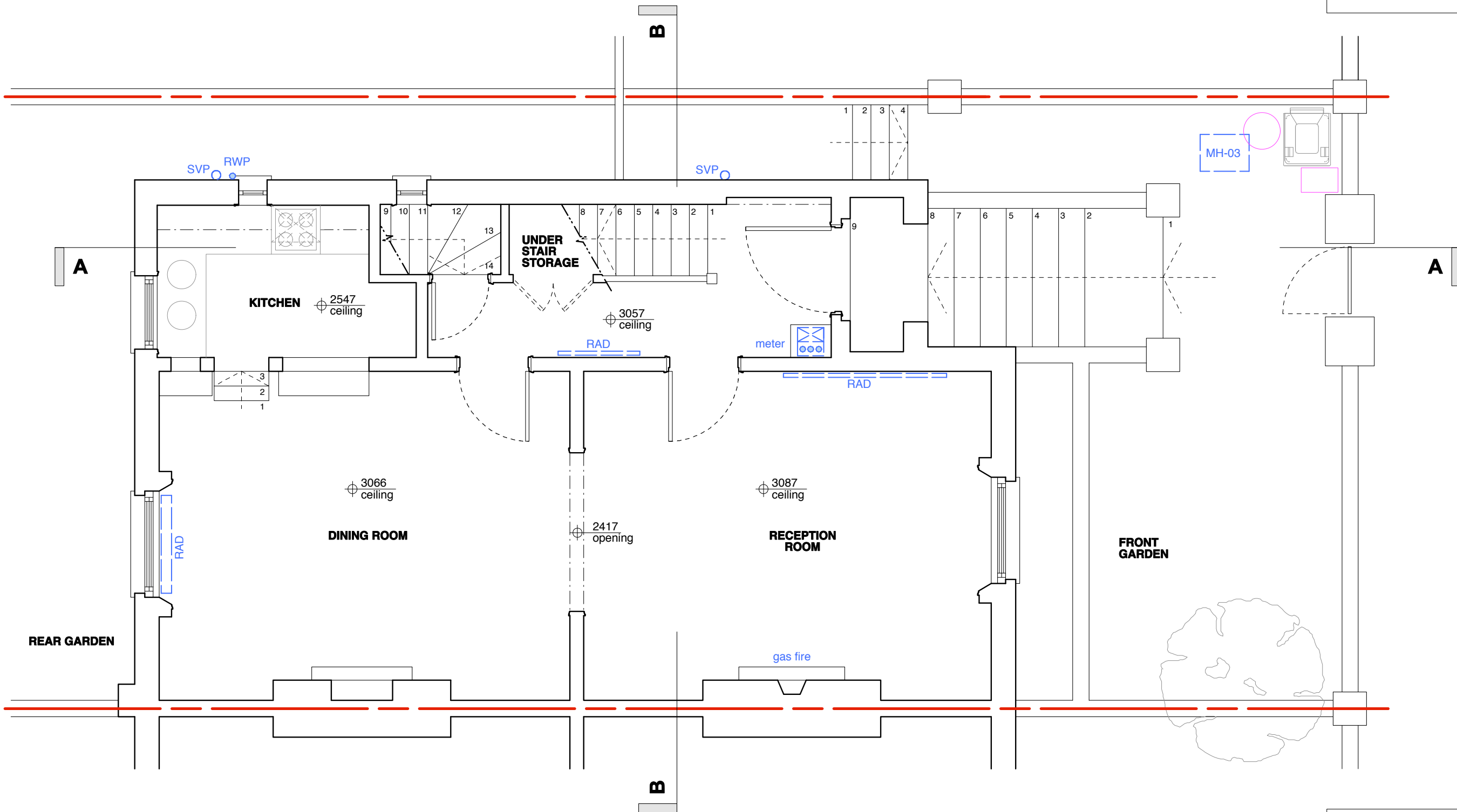
**HUGH CULLUM ARCHITECTS LTD**  
 Bloomsbury Design  
 61b Judd Street  
 London WC1H 9QT  
 t 020 7383 7647  
 f 020 7387 7645  
 mail@hughcullum.com

**2 Provost Road**  
 Existing Condition  
 Lower Ground Floor  
 1:50@A3 December 2016  
 PR002-E010(\_)

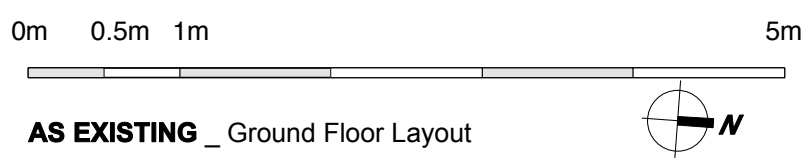
**General Notes**  
 Do not scale from this drawing  
 All dimensions to be verified on site  
 To be read in conjunction with all relevant documents  
 In the event of discrepancy notify the Architect immediately  
 This document is copyright of Hugh Cullum Architects Ltd

**Issue Status**  
 SK Sketch  
 D Design  
 T Tender

E Existing Condition  
 P Permissions  
 C Contract



(\_): Revision Information (00.00.02/AA/BB)  
 Revision: Information (date/drawn by/checked by)



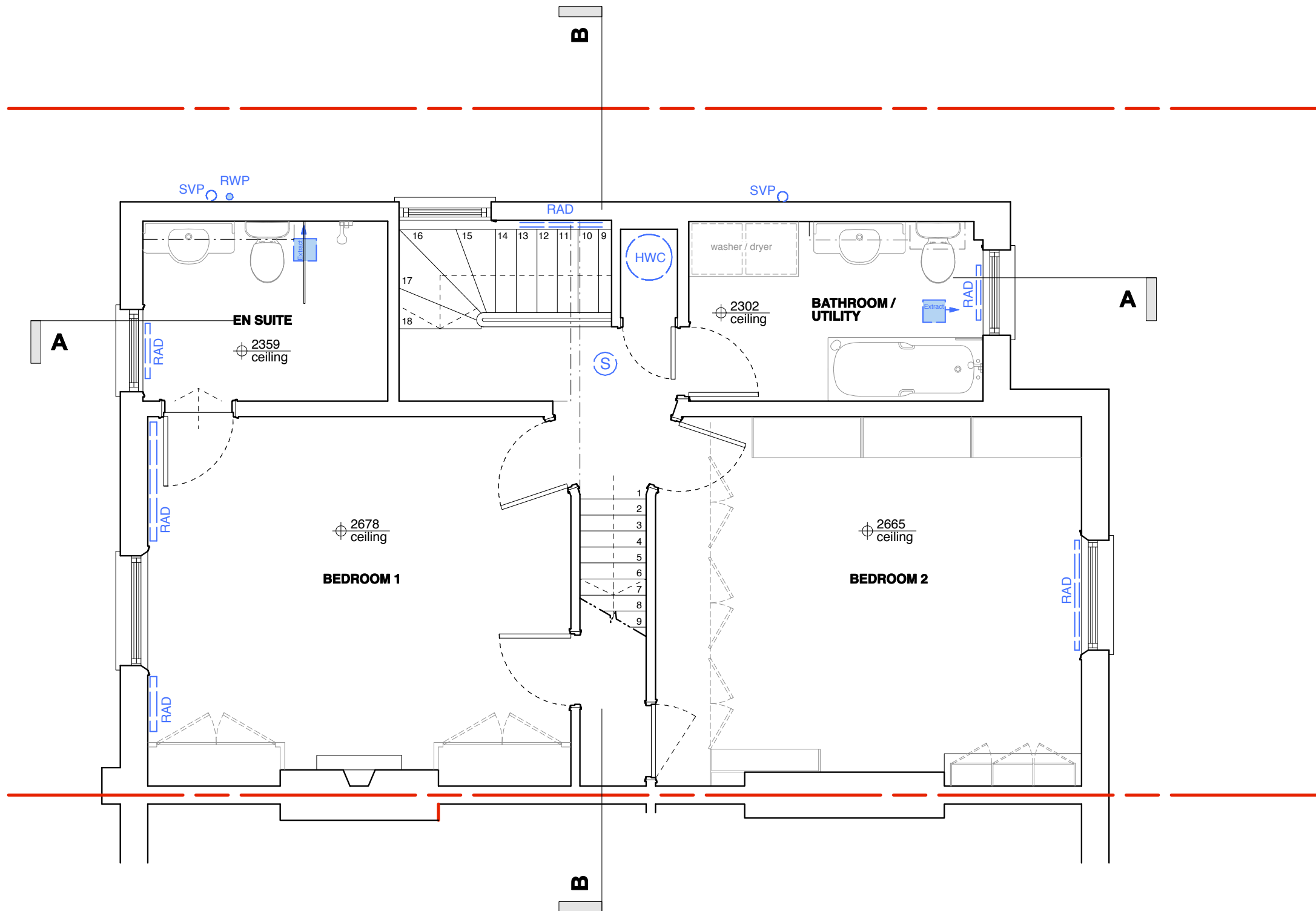
AS EXISTING \_ Ground Floor Layout

**HUGH CULLUM ARCHITECTS LTD**  
 Bloomsbury Design  
 61b Judd Street  
 London WC1H 9QT  
 t 020 7383 7647  
 f 020 7387 7645  
 mail@hughcullum.com

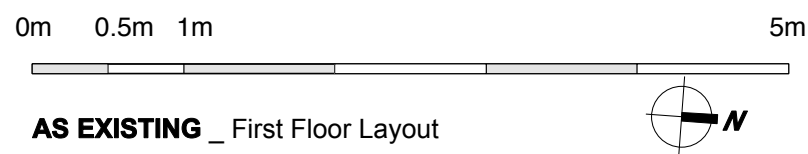
**2 Provost Road**  
 Existing Condition  
 Ground Floor  
 1:50@A3 December 2016  
 PR002-E011(\_)

**General Notes**  
 Do not scale from this drawing  
 All dimensions to be verified on site  
 To be read in conjunction with all relevant documents  
 In the event of discrepancy notify the Architect immediately  
 This document is copyright of Hugh Cullum Architects Ltd

**Issue Status**  
 SK Sketch                    E Existing Condition  
 D Design                    P Permissions  
 T Tender                    C Contract



(\_): Revision Information (00.00.02/AA/BB)  
 Revision: Information (date/drawn by/checked by)



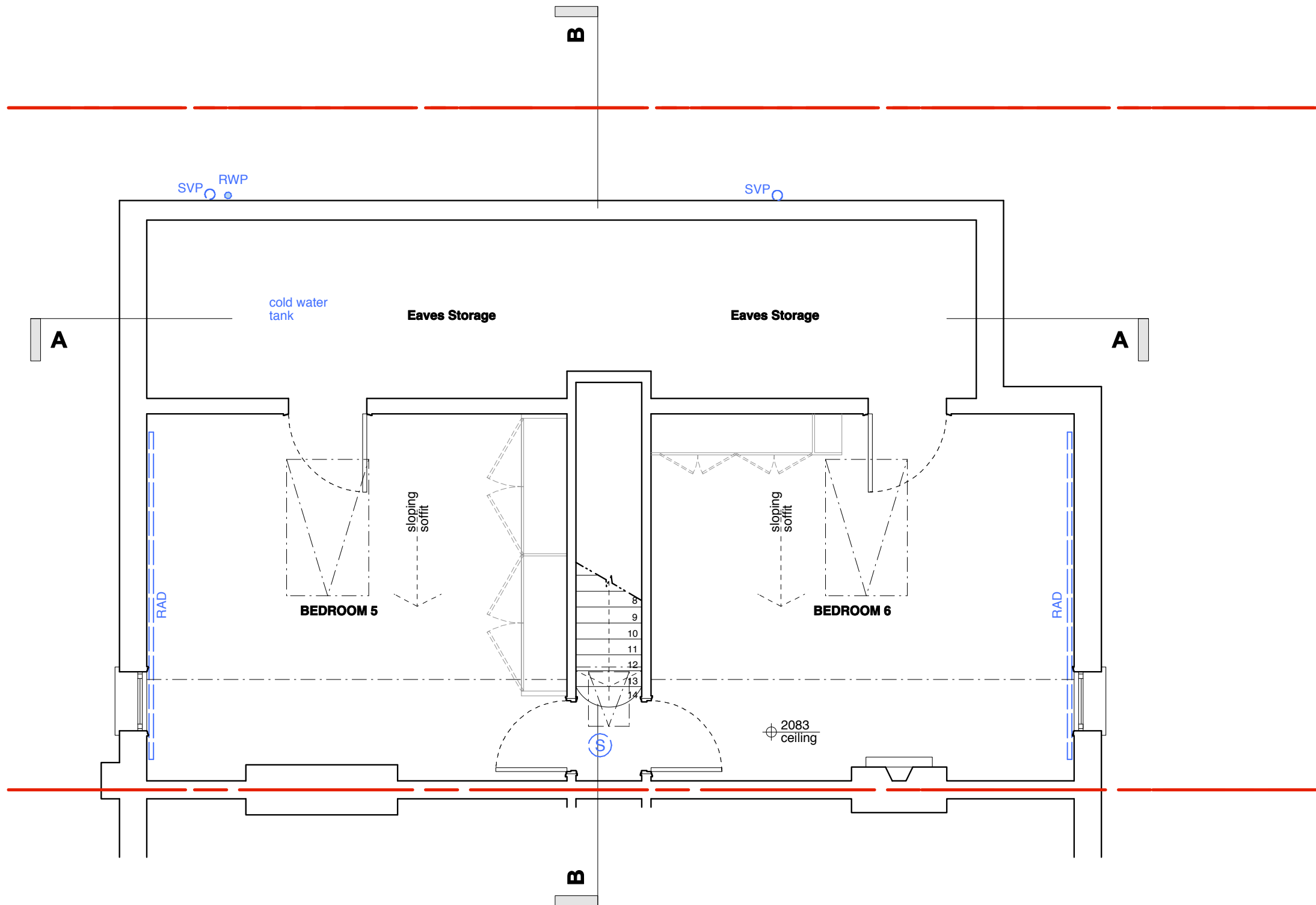
**AS EXISTING** \_ First Floor Layout

**HUGH CULLUM ARCHITECTS LTD**  
 Bloomsbury Design  
 61b Judd Street  
 London WC1H 9QT  
 t 020 7383 7647  
 f 020 7387 7645  
 mail@hughcullum.com

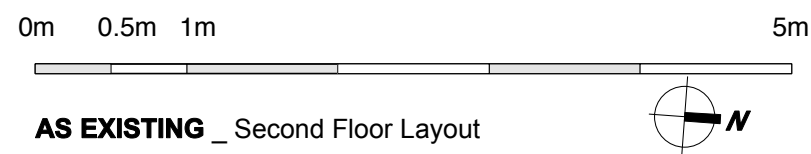
**2 Provost Road**  
 Existing Condition  
 First Floor  
 1:50@A3 December 2016  
 PR002-E012(\_)

**General Notes**  
 Do not scale from this drawing  
 All dimensions to be verified on site  
 To be read in conjunction with all relevant documents  
 In the event of discrepancy notify the Architect immediately  
 This document is copyright of Hugh Cullum Architects Ltd

**Issue Status**  
 SK Sketch            E Existing Condition  
 D Design            P Permissions  
 T Tender            C Contract



( ): Revision Information (00.00.02/AA/BB)  
 Revision: Information (date/drawn by/checked by)



AS EXISTING \_ Second Floor Layout

**HUGH CULLUM ARCHITECTS LTD**  
 Bloomsbury Design  
 61b Judd Street  
 London WC1H 9QT  
 t 020 7383 7647  
 f 020 7387 7645  
 mail@hughcullum.com

**2 Provost Road**  
 Existing Condition  
 Second Floor  
 1:50@A3 December 2016  
 PR002-E013( )



**General Notes**  
 Do not scale from this drawing  
 All dimensions to be verified on site  
 To be read in conjunction with all relevant documents  
 In the event of discrepancy notify the Architect immediately  
 This document is copyright of Hugh Cullum Architects Ltd

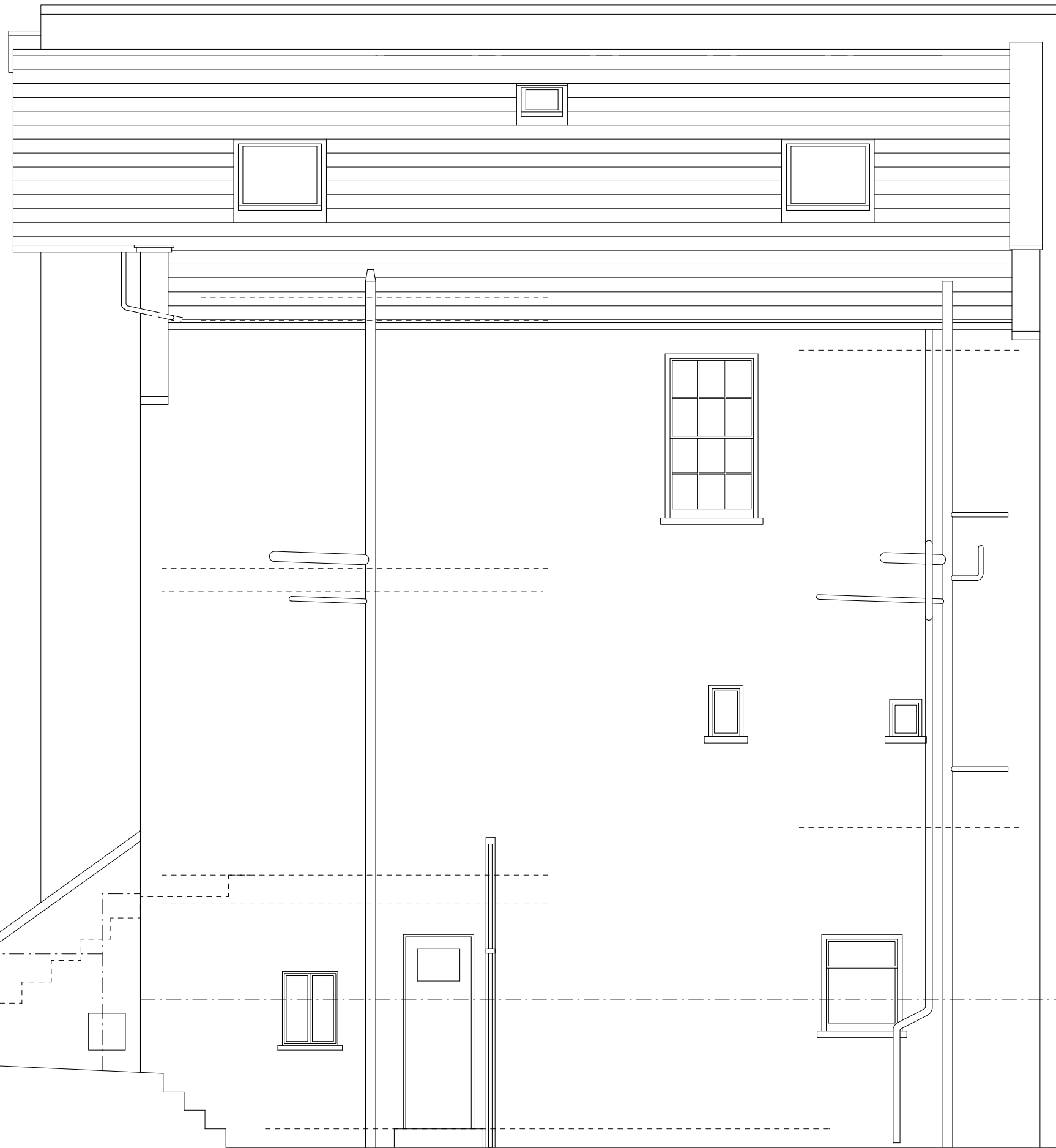
**Issue Status**  
 SK Sketch            E Existing Condition  
 D Design            P Permissions  
 T Tender            C Contract

( ): Revision Information (00.00.02/AA/BB)  
 Revision: Information (date/drawn by/checked by)



**AS EXISTING** \_ Front Elevation

**HUGH CULLUM**    **2 Provost Road**  
 ARCHITECTS LTD  
 Bloomsbury Design    Existing Condition  
 61b Judd Street    Front Elevation  
 London WC1H 9QT    1:50@A3    December 2016  
 t 020 7383 7647  
 f 020 7387 7645  
 mail@hughcullum.com    **PR002-E020( )**



**General Notes**  
 Do not scale from this drawing  
 All dimensions to be verified on site  
 To be read in conjunction with all relevant documents  
 In the event of discrepancy notify the Architect immediately  
 This document is copyright of Hugh Cullum Architects Ltd

**Issue Status**

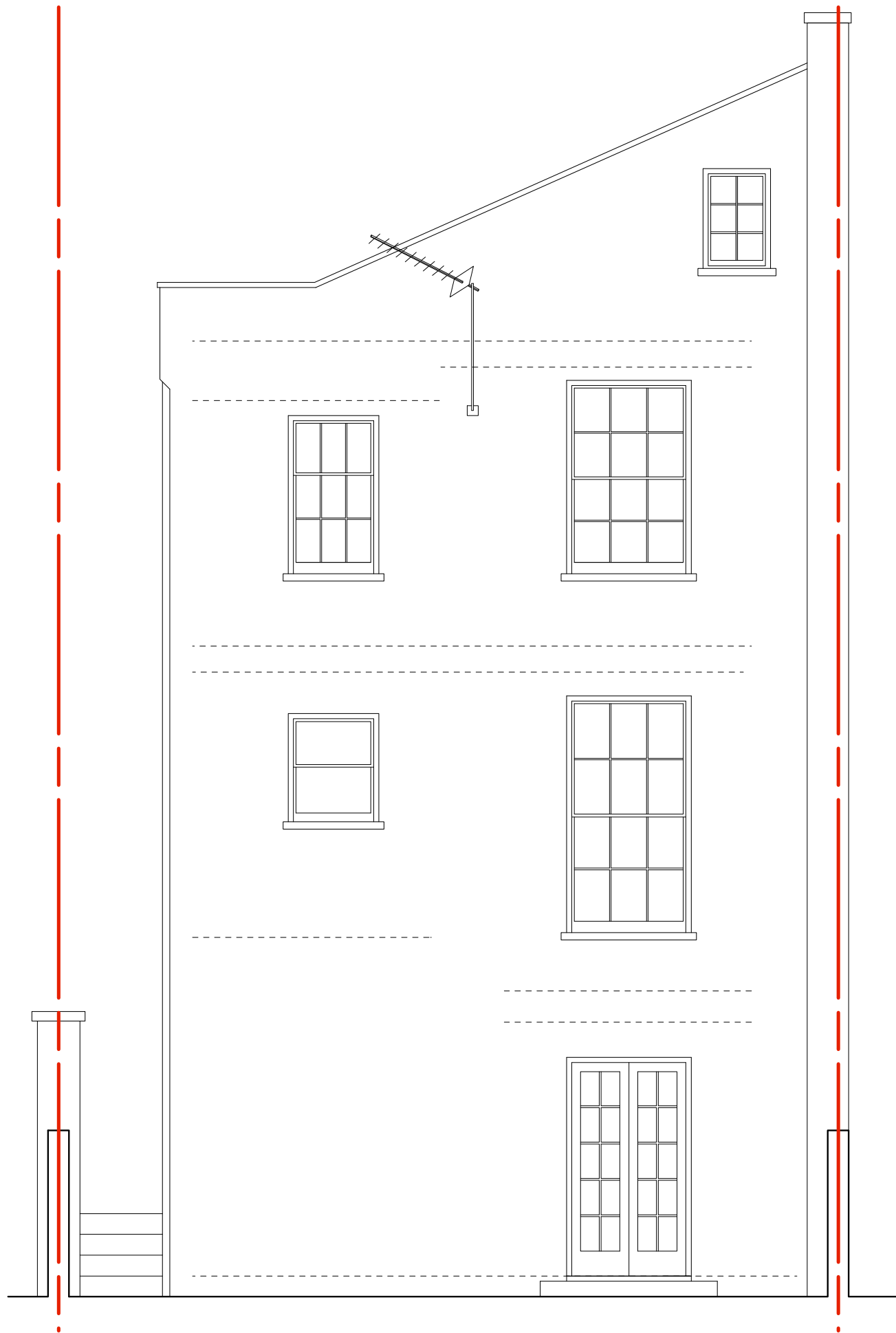
SK	Sketch	E	Existing Condition
D	Design	P	Permissions
T	Tender	C	Contract

( ): Revision Information (00.00.02/AA/BB)  
 Revision: Information (date/drawn by/checked by)

0m 0.5m 1m 5m

**AS EXISTING** \_ Side Elevation

**HUGH CULLUM** **2 Provost Road**  
 ARCHITECTS LTD  
 Bloomsbury Design  
 61b Judd Street  
 London WC1H 9QT  
 t 020 7383 7647  
 f 020 7387 7645  
 mail@hughcullum.com  
 Existing Condition  
 Side Elevation  
 1:50@A3 December 2016  
 PR002-E021( )



0m 0.5m 1m 5m

**AS EXISTING** \_ Rear Elevation

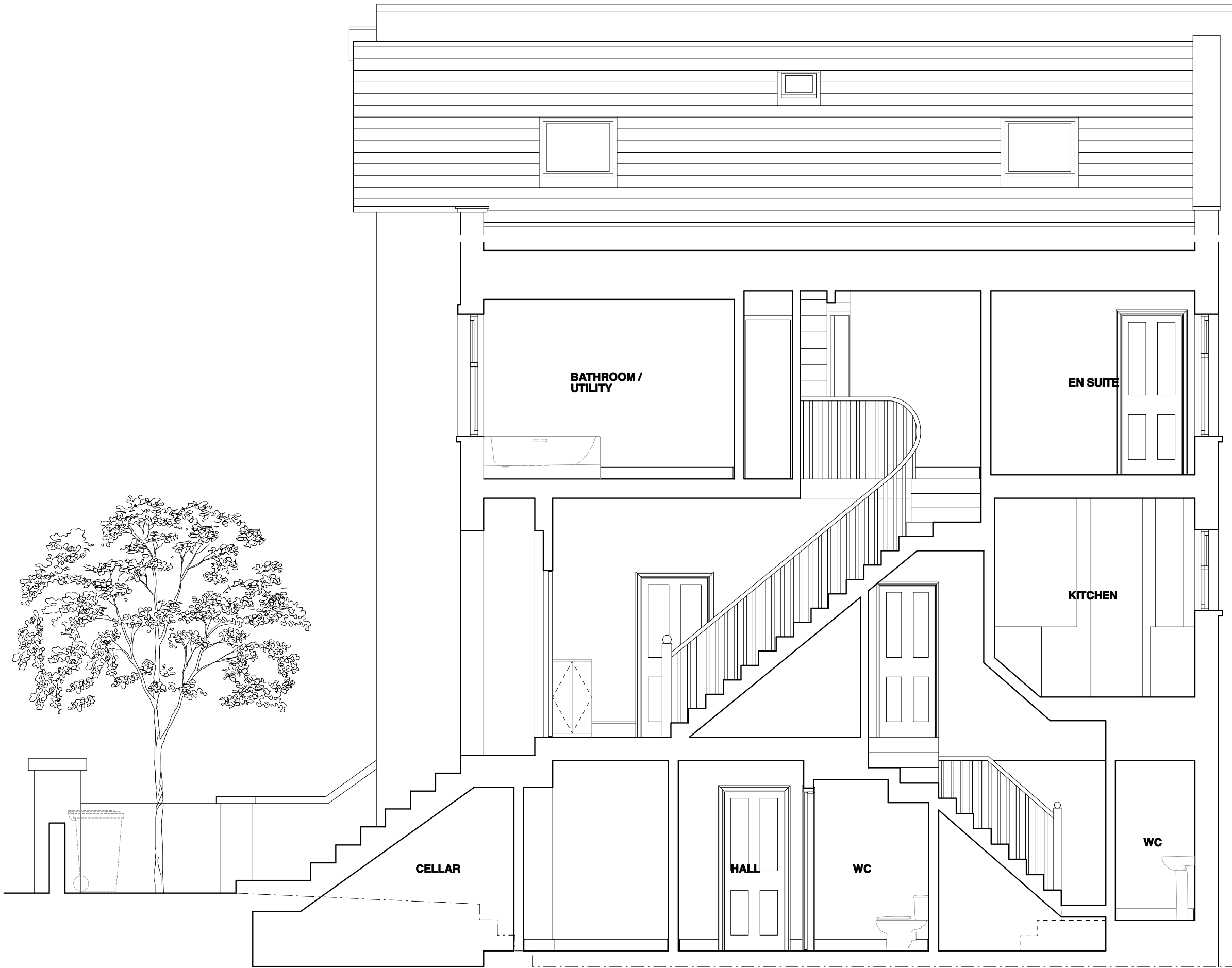
**General Notes**  
 Do not scale from this drawing  
 All dimensions to be verified on site  
 To be read in conjunction with all relevant documents  
 In the event of discrepancy notify the Architect immediately  
 This document is copyright of Hugh Cullum Architects Ltd

**Issue Status**

SK	Sketch	E	Existing Condition
D	Design	P	Permissions
T	Tender	C	Contract

(\_): Revision Information (00.00.02/AA/BB)  
 Revision: Information (date/drawn by/checked by)

**HUGH CULLUM**     **2 Provost Road**  
 ARCHITECTS LTD  
 Bloomsbury Design     Existing Condition  
 61b Judd Street     Rear Elevation  
 London WC1H 9QT     1:50@A3 December 2016  
 t 020 7383 7647  
 f 020 7387 7645  
 mail@hughcullum.com     **PR002-E022(\_)**



**General Notes**  
 Do not scale from this drawing  
 All dimensions to be verified on site  
 To be read in conjunction with all relevant documents  
 In the event of discrepancy notify the Architect immediately  
 This document is copyright of Hugh Cullum Architects Ltd

**Issue Status**  
 SK Sketch            E Existing Condition  
 D Design            P Permissions  
 T Tender            C Contract



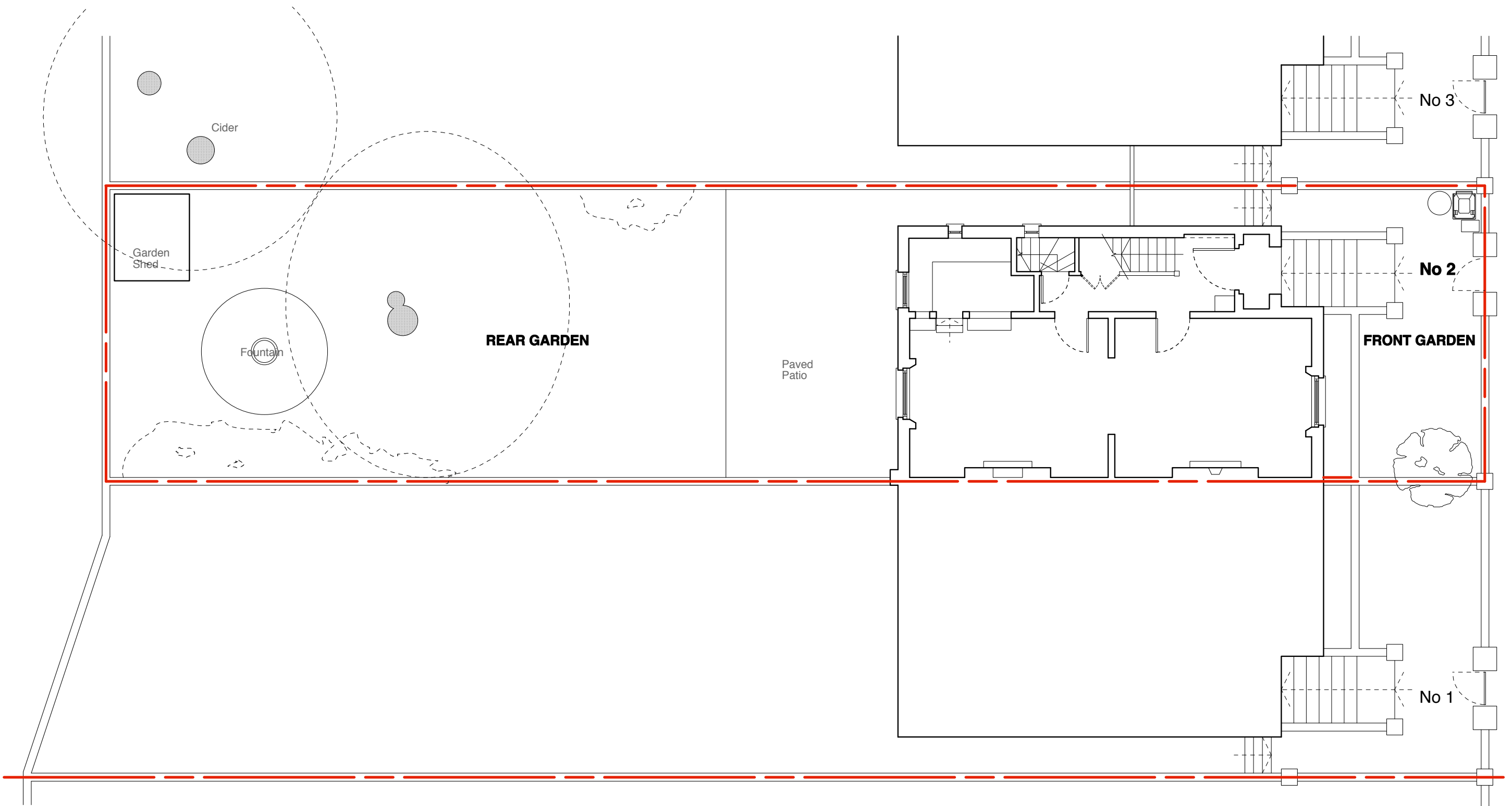
**AS EXISTING** \_ Section AA

(\_): Revision Information (00.00.02/AA/BB)  
 Revision: Information (date/drawn by/checked by)

**HUGH CULLUM ARCHITECTS LTD**  
 Bloomsbury Design  
 61b Judd Street  
 London WC1H 9QT  
 t 020 7383 7647  
 f 020 7387 7645  
 mail@hughcullum.com

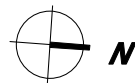
**2 Provost Road**  
 Existing Condition  
 Section AA  
 1:50@A3 December 2016  
 PR002-E023(\_)





0m 1m 5m 10m

AS EXISTING \_ Site Layout



**General Notes**

Do not scale from this drawing  
 All dimensions to be verified on site  
 To be read in conjunction with all relevant documents  
 In the event of discrepancy notify the Architect immediately  
 This document is copyright of Hugh Cullum Architects Ltd

**Issue Status**

SK Sketch	E Existing Condition
D Design	P Permissions
T Tender	C Contract

(\_): Revision Information (00.00.02/AA/BB)  
 Revision: Information (date/drawn by/checked by)

**HUGH CULLUM**  
 ARCHITECTS LTD  
 Bloomsbury Design  
 61b Judd Street  
 London WC1H 9QT  
 t 020 7383 7647  
 f 020 7387 7645  
 mail@hughcullum.com

**2 Provost Road**

Existing Condition  
 Site Plan  
 1:100@A3 December 2016

PR002-E002(\_)