

**LVL2, CORE1: DISPOSAL HOLD FM215, 10.37sqm**  
 2 x 1100LTR WHEELIE BIN (GENERAL & RECYCLE WASTE)  
 2 x 770LTR WHEELIE BIN (OFFENSIVE & INFECTIOUS CLINICAL WASTE)  
 (1 x METAL LINEN CAGE ON CASTORS)

**CORE 1 FM LIFT**  
 FOR DISTRIBUTION OF WASTE BINS  
 TO GROUND FLOOR  
 CENTRAL WASTE COMPOUND

**TOTAL NUMBER OF WASTE CONTAINERS / DIRTY LINEN CAGES AT LVL 2:**  
 4 x 1100LTR WHEELIE BIN (GENERAL & RECYCLE WASTE)  
 4 x 770LTR WHEELIE BIN (OFFENSIVE & INFECTIOUS CLINICAL WASTE)  
 (2 x METAL LINEN CAGE ON CASTORS)

**LOCATION OF DISPOSAL HOLDS PER FLOOR - GA MARK-UP - 2017.05.30**  
 (mark-up on latest GA's Rev. H for drawing sequence 111091, issued on 3rd March 2017)  
**SCOTT TALLON WALKER ARCHITECTS**

**LVL 2, CORE4: DISPOSAL HOLD FM216, 14.10sqm**  
 2 x 1100LTR WHEELIE BIN (GENERAL & RECYCLE WASTE)  
 2 x 770LTR WHEELIE BIN (OFFENSIVE & INFECTIOUS CLINICAL WASTE)  
 (1 x METAL LINEN CAGE ON CASTORS)

**CORE 4 FM LIFT**  
 FOR DISTRIBUTION OF WASTE BINS  
 TO GROUND FLOOR  
 CENTRAL WASTE COMPOUND

NOTES:

Rev	DATE	REVISION HISTORY	Dsg	Drw	Chk	App
H	2017.03.03	GEN Set of Drawings / Issued for Approval	STW	RG	K	KB
G	2017.01.27	GEN Set of Drawings / Issued For Approval	STW	KK	CK	KB
F	2016.10.07	Issued for Acceptance	STW	MDM	PS	KB
E	2016.07.06	Issued for Facade Tender	STW	MDM	CK	KB
D	2016.06.03	Updated to incorporate comments received under PM206 and EWN008 as per MoM of 05/05/2016 Issued For Acceptance	STW	MDM	CK	KB
C	2016.03.24	Issued For Approval	STW	STW	BYUK	BYUK

ALL REVISIONS	DATE	REVISION HISTORY	Dsg	Drw	Chk	App
H	2017.03.03	GEN Set of Drawings / Issued for Approval	STW	RG	K	KB
G	2017.01.27	GEN Set of Drawings / Issued For Approval	STW	KK	CK	KB
F	2016.10.07	Issued for Acceptance	STW	MDM	PS	KB
E	2016.07.06	Issued for Facade Tender	STW	MDM	CK	KB
D	2016.06.03	Updated to incorporate comments received under PM206 and EWN008 as per MoM of 05/05/2016 Issued For Acceptance	STW	MDM	CK	KB
C	2016.03.24	Issued For Approval	STW	STW	BYUK	BYUK



**BOUGUES**  
**Head Office:**  
 Elizabeth House,  
 39 York Road,  
 London, SE1 7NG.  
 Tel: 020 7401 0020  
 Fax: 020 7401 0030  
 www.bougues-uk.com

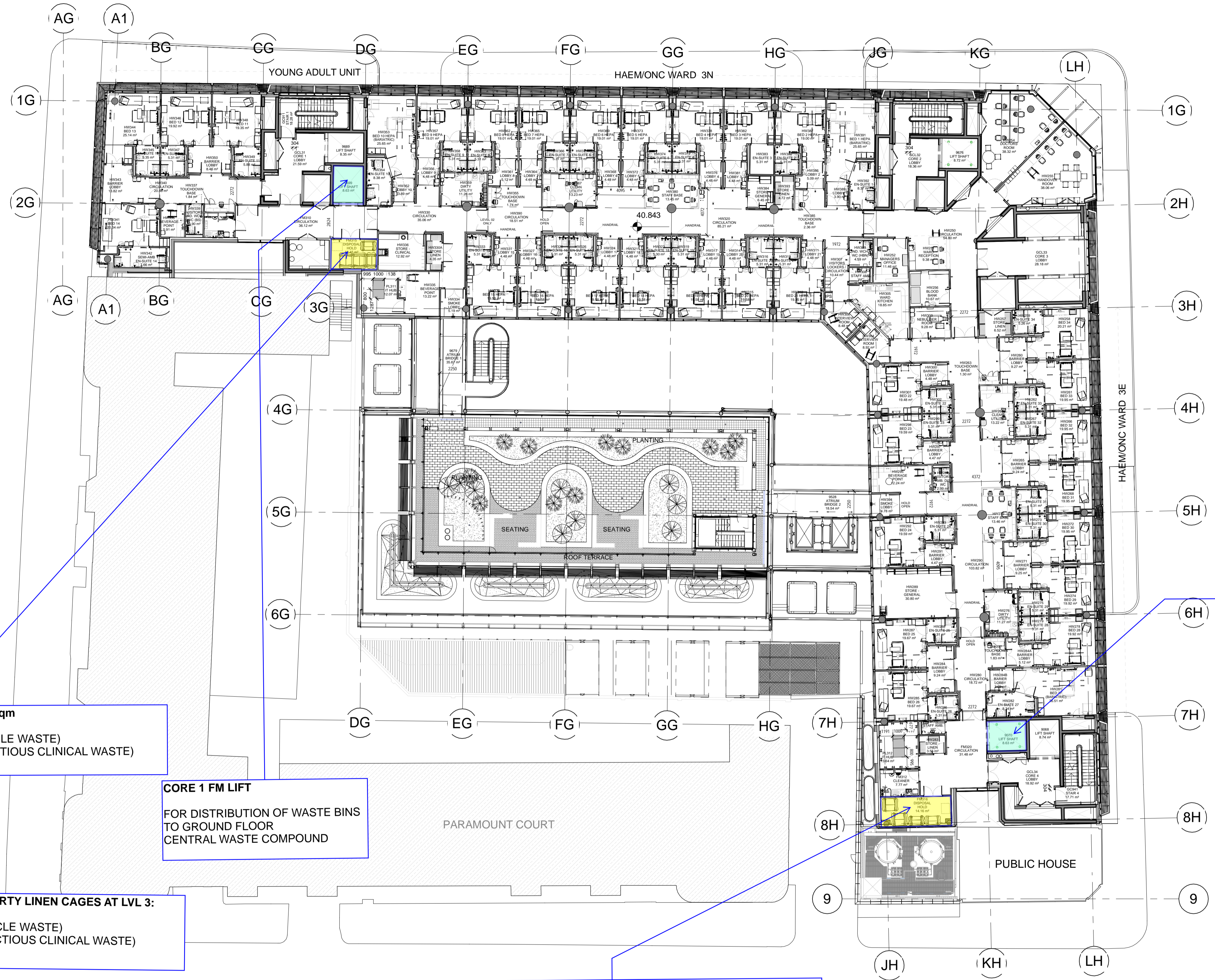
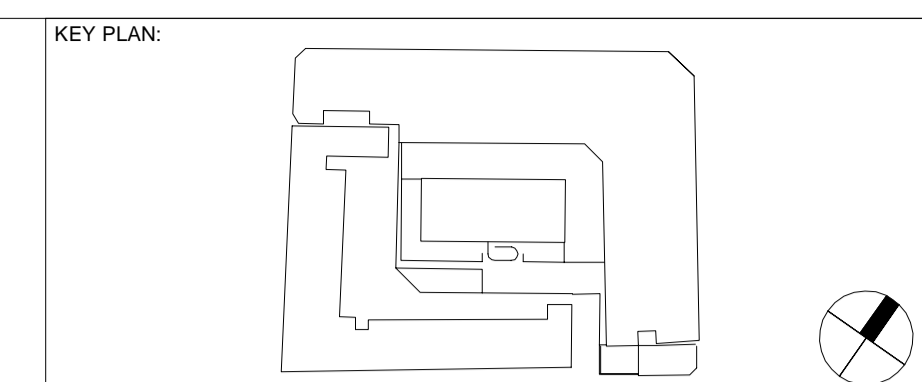
University College London Hospitals NHS Foundation Trust

Name	Signature	Date
Designed by	STW	2017.03.03
Drawn by	KK	2017.03.03
Checked	KK	2017.03.03
Approved	KB	2017.03.03

ORIGINATOR	SCALE	BIM FILE NAME
Scott Tallon Walker Architects	1 : 200	P4PBT-STW-AAB-SL-M3-A31-100054
FIRST ISSUE DATE	PROPOSED STATUS	
2016.02.16	S2 - For Information	

DRAWING TITLE								
Proton Beam Therapy - Phase 4								
General Arrangement Plans Second Floor Level								
PROJECT	ISSUER	AREA	LEVEL	TYPE	TRADE	SEQUENCE	REV	
P4PBT	STW	AAB	02	GA	A31	111091	H	





**LVL3, CORE1: DISPOSAL HOLD FM315, 10.45sqm**  
 2 x 1100LTR WHEELIE BIN (GENERAL & RECYCLE WASTE)  
 2 x 770LTR WHEELIE BIN (OFFENSIVE & INFECTIOUS CLINICAL WASTE)  
 (1 x METAL LINEN CAGE ON CASTORS)

**CORE 1 FM LIFT**  
 FOR DISTRIBUTION OF WASTE BINS  
 TO GROUND FLOOR  
 CENTRAL WASTE COMPOUND

**TOTAL NUMBER OF WASTE CONTAINERS / DIRTY LINEN CAGES AT LVL 3:**  
 4 x 1100LTR WHEELIE BIN (GENERAL & RECYCLE WASTE)  
 4 x 770LTR WHEELIE BIN (OFFENSIVE & INFECTIOUS CLINICAL WASTE)  
 (2 x METAL LINEN CAGE ON CASTORS)

**LOCATION OF DISPOSAL HOLDS PER FLOOR - GA MARK-UP - 2017.05.30**  
 (mark-up on latest GA's Rev. H for drawing sequence 111101, issued on 3rd March 2017)  
**SCOTT TALLON WALKER ARCHITECTS**

**LVL 3, CORE4: DISPOSAL HOLD FM316, 14.16sqm**  
 2 x 1100LTR WHEELIE BIN (GENERAL & RECYCLE WASTE)  
 2 x 770LTR WHEELIE BIN (OFFENSIVE & INFECTIOUS CLINICAL WASTE)  
 (1 x METAL LINEN CAGE ON CASTORS)

**CORE 4 FM LIFT**  
 FOR DISTRIBUTION OF WASTE BINS  
 TO GROUND FLOOR  
 CENTRAL WASTE COMPOUND

NOTES:

Rev	DATE	REVISION HISTORY	Dsg	Drw	Chk	App
H	2017.03.03	GEN Set of Drawings / Issued for Approval	STW	RG	K	KB
G	2017.01.27	GEN Set Of Drawings / Issued For Approval	STW	KK	CK	KB
F	2016.10.07	Issued for Acceptance	STW	MDM	PS	KB
E	2016.07.06	Issued for Facade Tender	STW	MDM	CK	KB
D	2016.06.03	Updated to incorporate comments received under PM2016 and EVM2016 as per MoM of 05/05/2016 Issued For Acceptance	STW	MDM	CK	KB
C	2016.03.24	Issued For Approval	STW	MDM	CK	KB



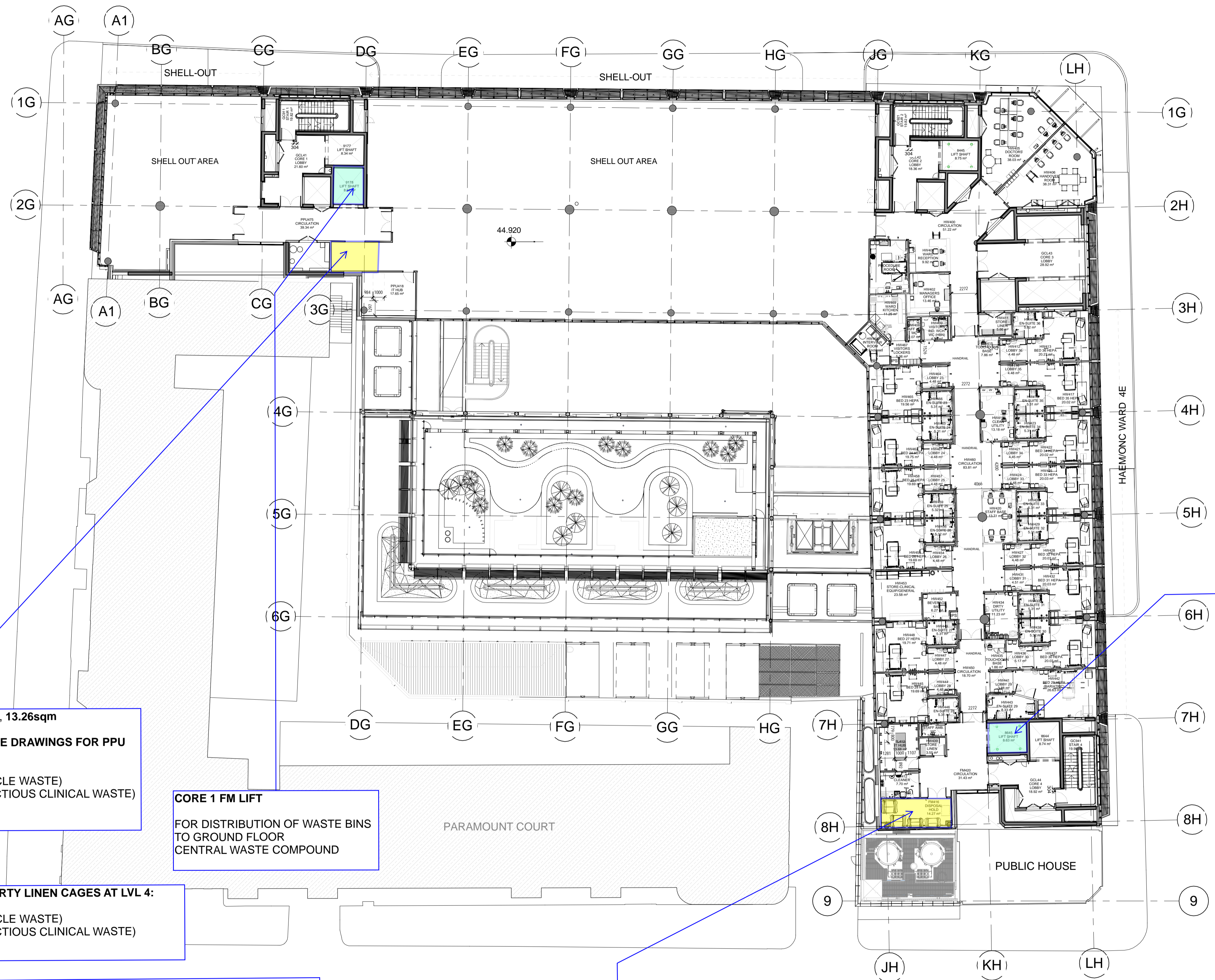
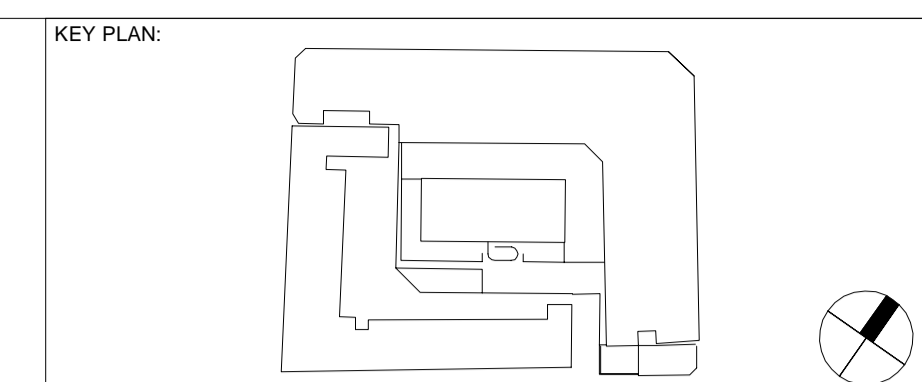
**BOUYGUES**  
**Head Office:**  
 Elizabeth House,  
 39 York Road,  
 London, SE1 7NG.  
 Tel: 020 7401 0020  
 Fax: 020 7401 0030  
 www.bouygues-uk.com

Name	Signature	Date
Designed by	STW	2017.03.03
Drawn by	KK	2017.03.03
Checked	KK	2017.03.03
Approved	KB	2017.03.03

ORIGINATOR	SCALE	BIM FILE NAME
University College London Hospitals NHS Foundation Trust	1 : 200	P4PBT-STW-AAB-SL-M3-A31-100054
Scott Tallon Walker Architects	FIRST ISSUE DATE	PROPOSED STATUS
	2016.02.16	S2 - FOR INFORMATION

DRAWING TITLE									
Proton Beam Therapy - Phase 4									
General Arrangement Plans Third Floor Level									
PROJECT	ISSUER	AREA	LEVEL	TYPE	TRADE	SEQUENCE	REV		
P4PBT	STW	AAB	03	GA	A31	111101	H		





**LVL4 - PPU, CORE1: DISPOSAL HOLD PPU420, 13.26sqm**  
**LAYOUT FOR PPU LVL4 SHOWN ON SEPARATE DRAWINGS FOR PPU DESIGN**  
 2 x 1100LTR WHEELIE BIN (GENERAL & RECYCLE WASTE)  
 2 x 770LTR WHEELIE BIN (OFFENSIVE & INFECTIOUS CLINICAL WASTE)  
 (1 x METAL LINEN CAGE ON CASTORS)

**CORE 1 FM LIFT**  
 FOR DISTRIBUTION OF WASTE BINS TO GROUND FLOOR CENTRAL WASTE COMPOUND

**TOTAL NUMBER OF WASTE CONTAINERS / DIRTY LINEN CAGES AT LVL 4:**  
 4 x 1100LTR WHEELIE BIN (GENERAL & RECYCLE WASTE)  
 4 x 770LTR WHEELIE BIN (OFFENSIVE & INFECTIOUS CLINICAL WASTE)  
 (2 x METAL LINEN CAGE ON CASTORS)

**LOCATION OF DISPOSAL HOLDS PER FLOOR - GA MARK-UP - 2017.05.30**  
 (mark-up on latest GA's Rev. H for drawing sequence 111111, issued on 3rd March 2017)  
**SCOTT TALLON WALKER ARCHITECTS**

**LVL 4, CORE4: DISPOSAL HOLD FM416, 14.27sqm**  
 2 x 1100LTR WHEELIE BIN (GENERAL & RECYCLE WASTE)  
 2 x 770LTR WHEELIE BIN (OFFENSIVE & INFECTIOUS CLINICAL WASTE)  
 (1 x METAL LINEN CAGE ON CASTORS)

**CORE 4 FM LIFT**  
 FOR DISTRIBUTION OF WASTE BINS TO GROUND FLOOR CENTRAL WASTE COMPOUND

NOTES:

Rev	DATE	REVISION HISTORY	Dsg	Drw	Chk	App
H	2017.03.03	GEN Set of Drawings / Issued for Approval	STW	RG	K	KB
G	2017.01.27	GEN Set Of Drawings / Issued For Approval	STW	KK	KK	KB
F	2016.10.07	Issued for Acceptance	STW	MDM	KK	KB
E	2016.07.06	Issued for Facade Tender	STW	MDM	KK	KB
D	2016.06.03	Updated to incorporate comments received under PM206 and EWN008 as per MoM of 05/05/2016	STW	MDM	KK	KB
C	2016.03.24	Issued For Approval	STW	STW	BYUK	BYUK



**BOUYGUES**  
**Head Office:**  
 Elizabeth House,  
 39 York Road,  
 London, SE1 7NG.  
 Tel: 020 7401 0020  
 Fax: 020 7401 0030  
 www.bouygues-uk.com

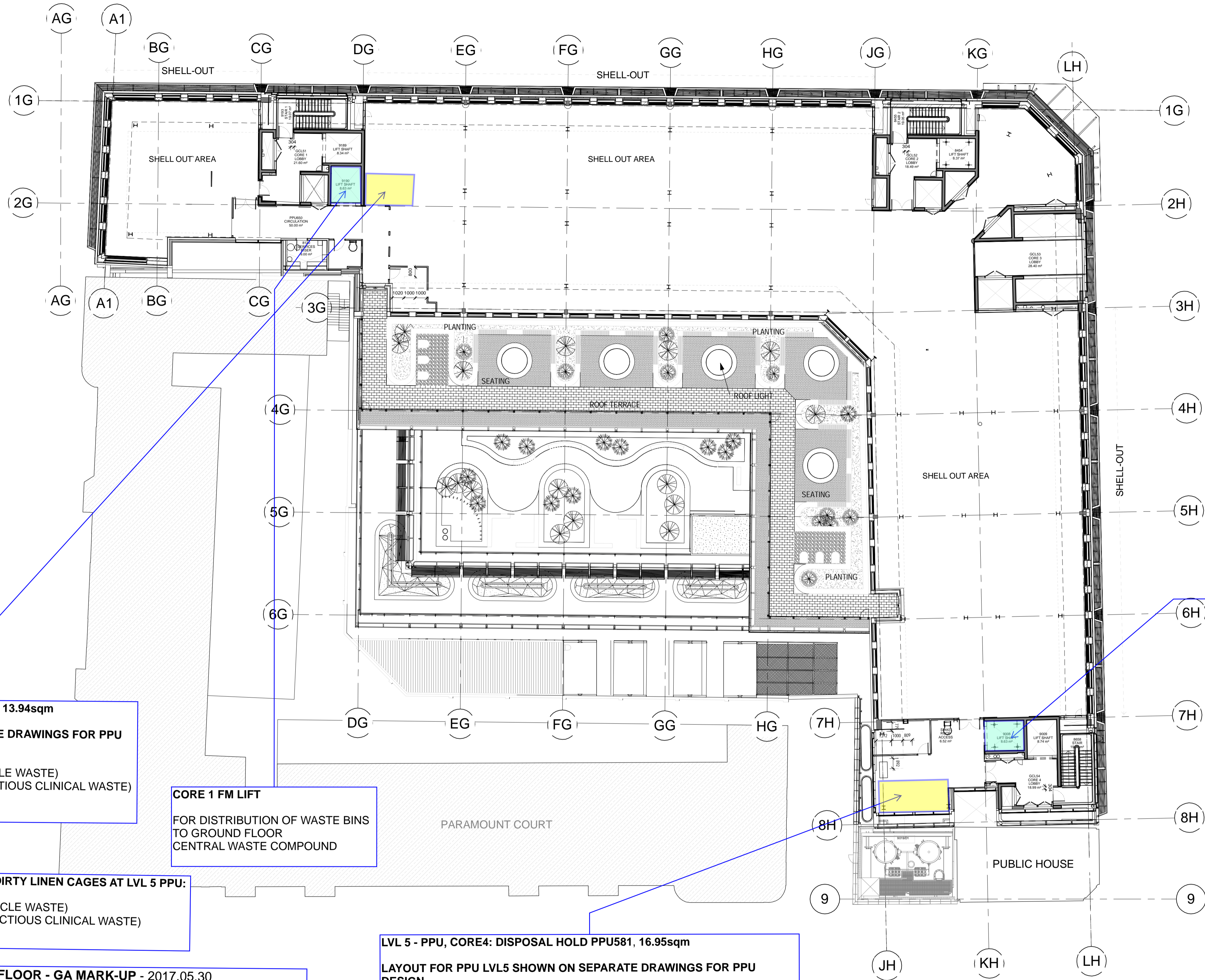
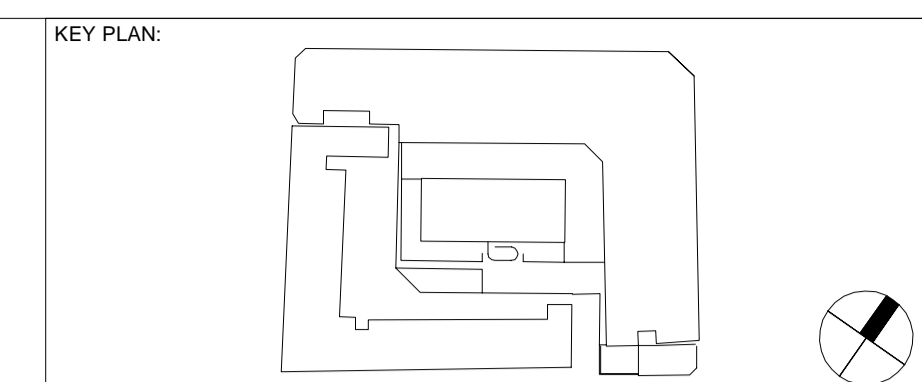
University College London Hospitals NHS Foundation Trust

Name	Signature	Date
Designed by	STW	2017.03.03
Drawn by	KK	2017.03.03
Checked	KK	2017.03.03
Approved	KB	2017.03.03

ORIGINATOR	SCALE	BIM FILE NAME
University College London Hospitals NHS Foundation Trust	1 : 200	P4PBT-STW-AAB-SL-M3-A31-100054
FIRST ISSUE DATE	PROPOSED STATUS	
2016.02.16	S2 - FOR INFORMATION	

DRAWING TITLE									
Proton Beam Therapy - Phase 4									
General Arrangement Plans Fourth Floor Level									
PROJECT	ISSUER	AREA	LEVEL	TYPE	TRADE	SEQUENCE	REV		
P4PBT	STW	AAB	04	GA	A31	111111	H		





**LVL5 - PPU, CORE1: DISPOSAL HOLD PPU534, 13.94sqm**  
**LAYOUT FOR PPU LVL5 SHOWN ON SEPARATE DRAWINGS FOR PPU DESIGN**  
 2 x 1100LTR WHEELIE BIN (GENERAL & RECYCLE WASTE)  
 2 x 770LTR WHEELIE BIN (OFFENSIVE & INFECTIOUS CLINICAL WASTE)  
 (1 x METAL LINEN CAGE ON CASTORS)

**CORE 1 FM LIFT**  
 FOR DISTRIBUTION OF WASTE BINS TO GROUND FLOOR CENTRAL WASTE COMPOUND

**TOTAL NUMBER OF WASTE CONTAINERS / DIRTY LINEN CAGES AT LVL 5 PPU:**  
 4 x 1100LTR WHEELIE BIN (GENERAL & RECYCLE WASTE)  
 4 x 770LTR WHEELIE BIN (OFFENSIVE & INFECTIOUS CLINICAL WASTE)  
 (2 x METAL LINEN CAGE ON CASTORS)

**LOCATION OF DISPOSAL HOLDS PER FLOOR - GA MARK-UP - 2017.05.30**  
 (mark-up on latest GA's Rev. G for drawing sequence 111121, issued on 3rd March 2017)  
**SCOTT TALLON WALKER ARCHITECTS**

**LVL 5 - PPU, CORE4: DISPOSAL HOLD PPU581, 16.95sqm**  
**LAYOUT FOR PPU LVL5 SHOWN ON SEPARATE DRAWINGS FOR PPU DESIGN**  
 2 x 1100LTR WHEELIE BIN (GENERAL & RECYCLE WASTE)  
 2 x 770LTR WHEELIE BIN (OFFENSIVE & INFECTIOUS CLINICAL WASTE)  
 (1 x METAL LINEN CAGE ON CASTORS)

**CORE 4 FM LIFT**  
 FOR DISTRIBUTION OF WASTE BINS TO GROUND FLOOR CENTRAL WASTE COMPOUND

NOTES:

Rev	DATE	REVISION HISTORY	Dsg	Drw	Chk	App
G	2017.03.03	GEN Set of Drawings / Issued for Approval	STW	RG	K	KB
F	2017.01.27	GEN Set of Drawings / Issued For Approval	STW	KK	CK	KB
E	2016.10.07	Issued for Acceptance	STW	MDM	CK	KB
D	2016.07.06	Issued for Facade Tender	STW	MDM	CK	KB
C	2016.06.03	Updated to incorporate comments received under PM206 and EVN008 as per MoM of 05/05/2016 Issued For Acceptance	STW	MDM	CK	KB
B	2016.02.20	Issued for Approval	STW	STW	STW	STW



**BOUGUES**  
**Head Office:**  
 Elizabeth House,  
 39 York Road,  
 London, SE1 7NG.  
 Tel: 020 7401 0020  
 Fax: 020 7401 0030  
 www.bougues-uk.com

University College London Hospitals **NHS** Scott Tallon Walker Architects  
 NHS Foundation Trust

Name	Signature	Date
Designed by	STW	2017.03.03
Drawn by	KK	2017.03.03
Checked	KK	2017.03.03
Approved	KB	2017.03.03

ORIGINATOR	SCALE	BIM FILE NAME
1 : 200	@ A1	P4PBT-STW-AAB-SL-M3-A31-100054
FIRST ISSUE DATE	PROPOSED STATUS	
2016.02.16	S2 - FOR INFORMATION	

DRAWING TITLE								
Proton Beam Therapy - Phase 4								
General Arrangement Plans Fifth Floor Level								
PROJECT	ISSUER	AREA	LEVEL	TYPE	TRADE	SEQUENCE	REV	
P4PBT	STW	AAB	05	GA	A31	111121	G	