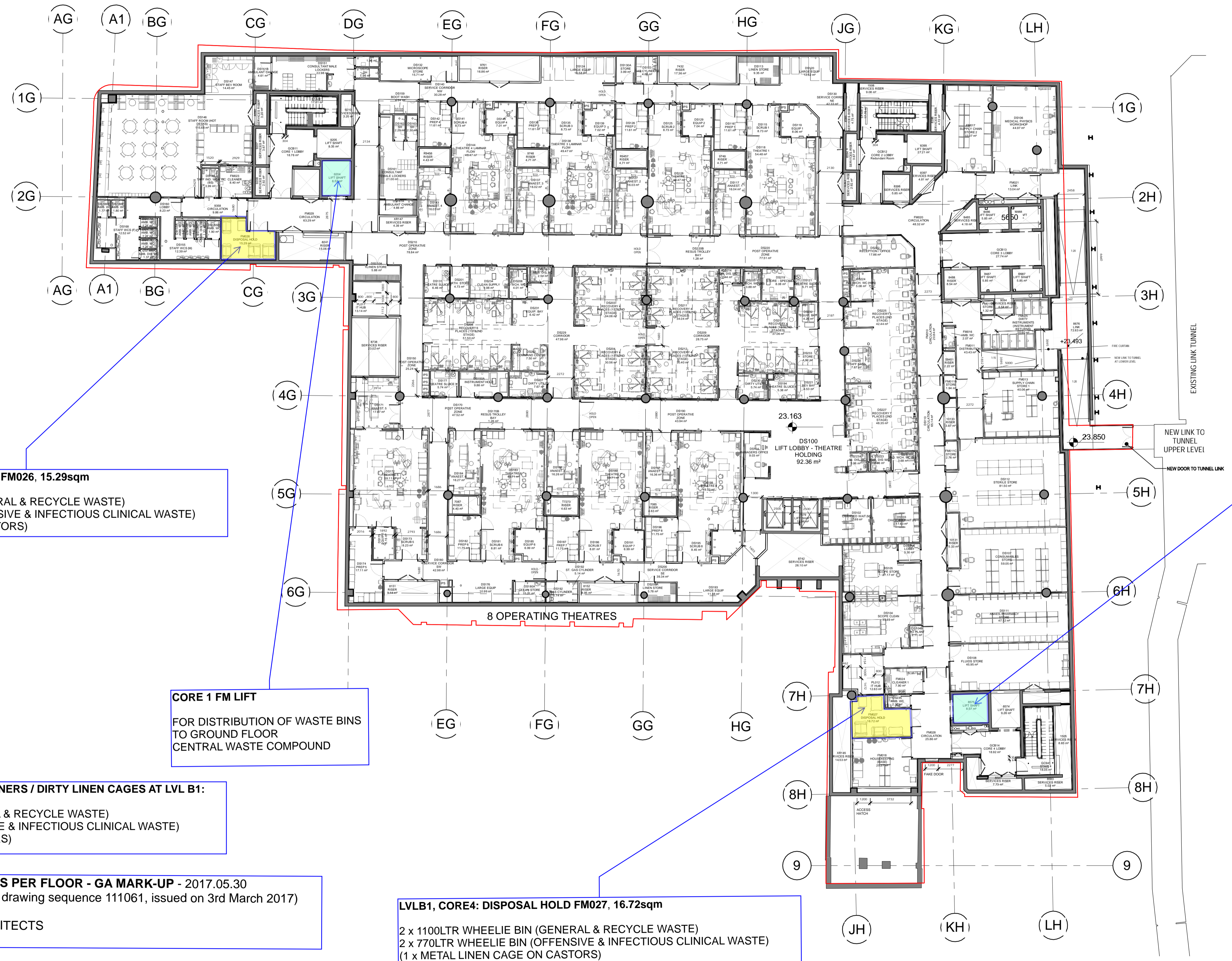


GA PLAN LEGEND
 — Property Boundary Line Below Ground



LVLB1, CORE1: DISPOSAL HOLD FM026, 15.29sqm
 2 x 1100LTR WHEELIE BIN (GENERAL & RECYCLE WASTE)
 2 x 770LTR WHEELIE BIN (OFFENSIVE & INFECTIOUS CLINICAL WASTE)
 (1 x METAL LINEN CAGE ON CASTORS)

CORE 1 FM LIFT
 FOR DISTRIBUTION OF WASTE BINS
 TO GROUND FLOOR
 CENTRAL WASTE COMPOUND

TOTAL NUMBER OF WASTE CONTAINERS / DIRTY LINEN CAGES AT LVL B1:
 4 x 1100LTR WHEELIE BIN (GENERAL & RECYCLE WASTE)
 4 x 770LTR WHEELIE BIN (OFFENSIVE & INFECTIOUS CLINICAL WASTE)
 (2 x METAL LINEN CAGE ON CASTORS)

LOCATION OF DISPOSAL HOLDS PER FLOOR - GA MARK-UP - 2017.05.30
 (mark-up on latest GA's Rev. H for drawing sequence 111061, issued on 3rd March 2017)
SCOTT TALLON WALKER ARCHITECTS

LVLB1, CORE4: DISPOSAL HOLD FM027, 16.72sqm
 2 x 1100LTR WHEELIE BIN (GENERAL & RECYCLE WASTE)
 2 x 770LTR WHEELIE BIN (OFFENSIVE & INFECTIOUS CLINICAL WASTE)
 (1 x METAL LINEN CAGE ON CASTORS)

CORE 4 FM LIFT
 FOR DISTRIBUTION OF WASTE BINS
 TO GROUND FLOOR
 CENTRAL WASTE COMPOUND

NOTES:
 For Previous Revision of Plan see drawing No. 111060

Rev	DATE	REVISION HISTORY	Dsg	Drw	Chk	App
H	2017.03.03	GEN Set of Drawings / Issued For Approval	STW	RG	JK	KB
G	2017.01.27	GEN Set Of Drawings / Issued For Approval	STW	KK	CK	KB
F	2016.10.07	Issued for Acceptance	STW	MDM	PS	KB
E	2016.08.03	S1-Issued For Coordination Rooms to be provided by BDCT for PTE	STW	MDM	CK	KB
D	2016.06.03	Update to incorporate comments received under PM206 and EVID08 as per MoM of 05/05/2016 Issue for Acceptance	STW	MDM	CK	KB
C	2016.03.24	Issued For Approval	STW	STW	BYUK	BYUK

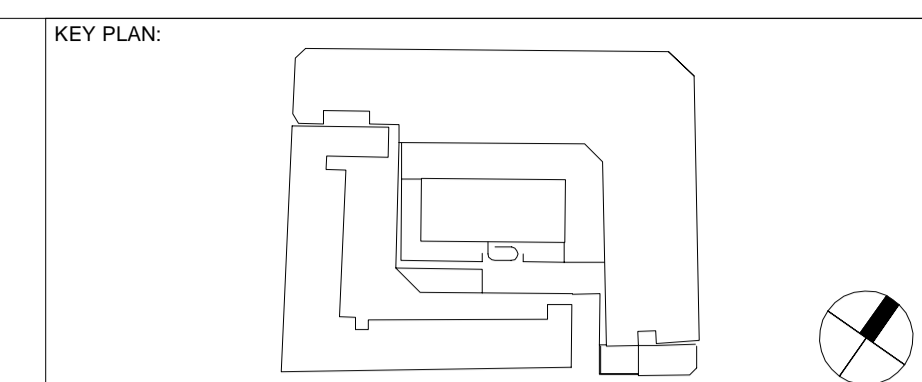


BOUGUES
Head Office:
 Elizabeth House,
 39 York Road,
 London, SE1 7NG.
 Tel: 020 7401 0020
 Fax: 020 7401 0030
 www.bougues-uk.com

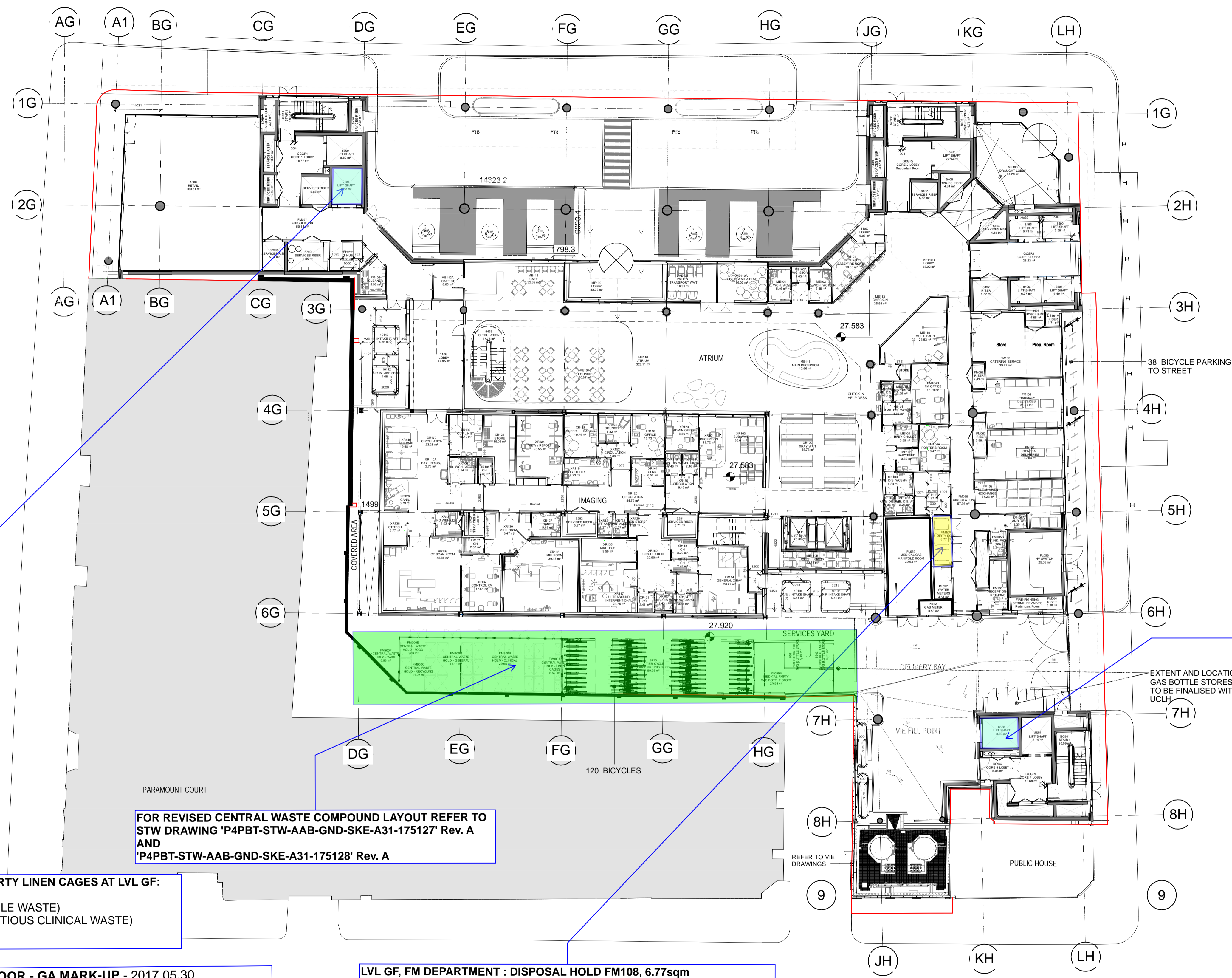
Name	Signature	Date
Designed by	STW	2017.03.03
Drawn by	KK	2017.03.03
Checked	KK	2017.03.03
Approved	KB	2017.03.03

ORIGINATOR
University College London Hospitals NHS Foundation Trust
Scott Tallon Walker Architects
 SCALE: 1 : 200
 FIRST ISSUE DATE: 2016.02.16
 PROPOSED STATUS: S2 - FOR INFORMATION

DRAWING TITLE		PROJECT									
Proton Beam Therapy - Phase 4		PROJECT	ISSUER	AREA	LEVEL	TYPE	TRADE	SEQUENCE	REV		
General Arrangement Plans Basement 1		P4PBT	STW	AAB	B1	GA	A31	111061	H		



GA PLAN LEGEND
 — Property Boundary Line Above Ground



CORE 1 FM LIFT
 FOR DISTRIBUTION OF WASTE BINS TO GROUND FLOOR CENTRAL WASTE COMPOUND

CORE 4 FM LIFT
 FOR DISTRIBUTION OF WASTE BINS TO GROUND FLOOR CENTRAL WASTE COMPOUND

FOR REVISED CENTRAL WASTE COMPOUND LAYOUT REFER TO STW DRAWING 'P4PBT-STW-AAB-GND-SKE-A31-175127' Rev. A AND 'P4PBT-STW-AAB-GND-SKE-A31-175128' Rev. A

TOTAL NUMBER OF WASTE CONTAINERS / DIRTY LINEN CAGES AT LVL GF:
 2 x 1100LTR WHEELIE BIN (GENERAL & RECYCLE WASTE)
 1 x 770LTR WHEELIE BIN (OFFENSIVE & INFECTIOUS CLINICAL WASTE)

LOCATION OF DISPOSAL HOLDS PER FLOOR - GA MARK-UP - 2017.05.30
 (mark-up on latest GA's Rev. 1 for drawing sequence 111071, issued on 3rd March 2017)
SCOTT TALLON WALKER ARCHITECTS

LVL GF, FM DEPARTMENT : DISPOSAL HOLD FM108, 6.77sqm
 2 x 1100LTR WHEELIE BIN (GENERAL & RECYCLE WASTE)
 1 x 770LTR WHEELIE BIN (OFFENSIVE & INFECTIOUS CLINICAL WASTE)

NOTES:

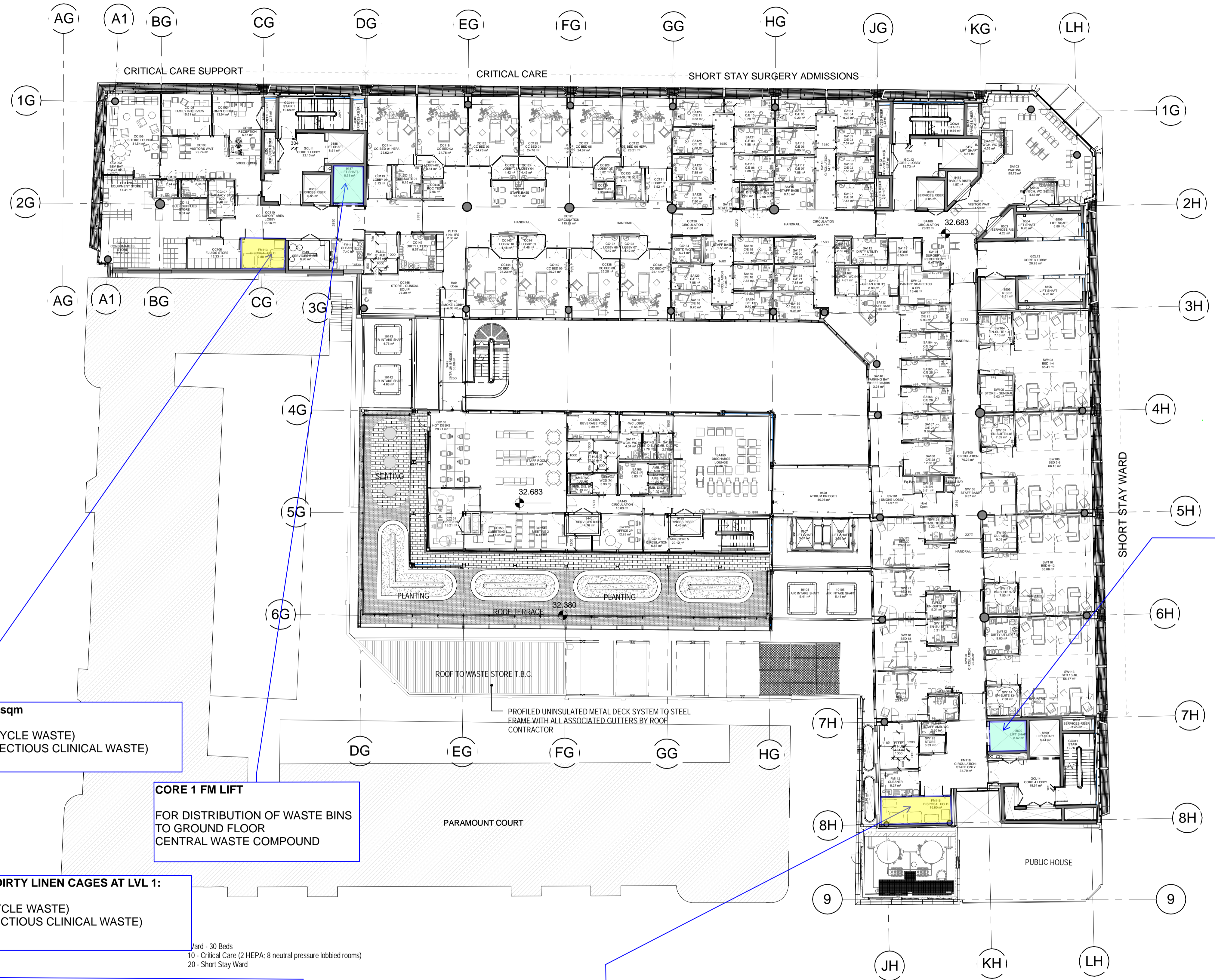
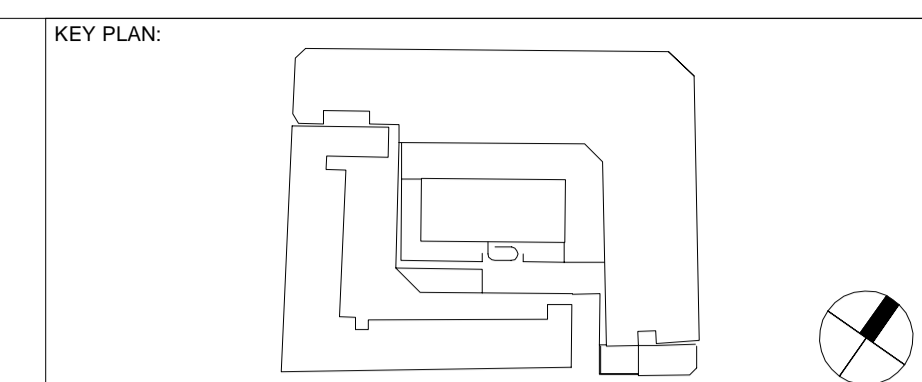
Rev	DATE	REVISION HISTORY	Dsg	Drw	Chk	App
I	2017.03.03	GEN Set of Drawings / Issued For Approval	STW	RG	JK	KB
H	2017.01.27	GEN Set Of Drawings / Issued For Approval	STW	KK	CK	KB
G	2016.10.07	Issued for Acceptance	STW	MDM	PS	KB
F	2016.08.03	S1-Issued For Coordination Rooms to be provided by BDCT for PTE	STW	MDM	CK	B
E	2016.07.05	Issued for Facade tender	STW	MDM	CK	KB
D	2016.06.03	Update to incorporate comments received under PMC206 and EWN008 as per MoM of 05/05/2016 Issue for Acceptance	STW	STW	BYUK	BYUK



BOUGUES
Head Office:
 Elizabeth House,
 39 York Road,
 London, SE1 7NG.
 Tel: 020 7401 0020
 Fax: 020 7401 0030
 www.bougues-uk.com

University College London Hospitals NHS NHS Foundation Trust		Scott Tallon Walker Architects	
Name: STW Signature: KK Date: 2017.03.03	Name: KB Signature: KB Date: 2017.03.03	Name: KB Signature: KB Date: 2017.03.03	Name: KB Signature: KB Date: 2017.03.03
SCALE: 1 : 200 FIRST ISSUE DATE: 2016.02.16		@ A1 BIM FILE NAME: P4PBT-STW-AAB-SL-M3-A31-100051 PROPOSED STATUS: S2 - FOR INFORMATION	

DRAWING TITLE Proton Beam Therapy - Phase 4 General Arrangement Plans Ground Floor Level									
PROJECT	ISSUER	AREA	LEVEL	TYPE	TRADE	SEQUENCE	REV		
P4PBT	STW	AAB	GND	GA	A31	111071	I		



LVL1, CORE1: DISPOSAL HOLD FM113. 9.88sqm
 2 x 1100LTR WHEELIE BIN (GENERAL & RECYCLE WASTE)
 2 x 770LTR WHEELIE BIN (OFFENSIVE & INFECTIOUS CLINICAL WASTE)
 (1 x METAL LINEN CAGE ON CASTORS)

CORE 1 FM LIFT
 FOR DISTRIBUTION OF WASTE BINS
 TO GROUND FLOOR
 CENTRAL WASTE COMPOUND

TOTAL NUMBER OF WASTE CONTAINERS / DIRTY LINEN CAGES AT LVL 1:
 4 x 1100LTR WHEELIE BIN (GENERAL & RECYCLE WASTE)
 4 x 770LTR WHEELIE BIN (OFFENSIVE & INFECTIOUS CLINICAL WASTE)
 (2 x METAL LINEN CAGE ON CASTORS)

LOCATION OF DISPOSAL HOLDS PER FLOOR - GA MARK-UP - 2017.05.30
 (mark-up on latest GA's Rev. H for drawing sequence 111081, issued on 3rd March 2017)
SCOTT TALLON WALKER ARCHITECTS

LVL 1, CORE4: DISPOSAL HOLD FM116. 16.60sqm
 2 x 1100LTR WHEELIE BIN (GENERAL & RECYCLE WASTE)
 2 x 770LTR WHEELIE BIN (OFFENSIVE & INFECTIOUS CLINICAL WASTE)
 (1 x METAL LINEN CAGE ON CASTORS)

CORE 4 FM LIFT
 FOR DISTRIBUTION OF WASTE BINS
 TO GROUND FLOOR
 CENTRAL WASTE COMPOUND

NOTES:
 For Previous Revision of Plan see drawing No. 111080

Rev	DATE	REVISION HISTORY	Dsg	Drw	Chk	App
H	2017.03.03	GEN Set of Drawings / Issued For Approval	STW	RG	J	KB
G	2017.01.27	GEN Set Of Drawings / Issued For Approval	STW	KK	K	KB
F	2016.10.07	Issued for Acceptance	STW	MDM	S	KB
E	2016.07.06	Issued for Facade tender	STW	MDM	K	KB
D	2016.06.03	Update to incorporate comments received under PM2016 and EVIN2016 as per MoM of 05/05/2016 Issue for Acceptance	STW	MDM	K	KB
C	2016.03.24	Issued For Approval	STW	STW	BYUK	BYUK



BOUGUES
 Head Office:
 Elizabeth House,
 39 York Road,
 London, SE1 7NG.
 Tel: 020 7401 0020
 Fax: 020 7401 0030
 www.bougues-uk.com

Name	Signature	Date
Designed by	STW	2017.03.03
Drawn by	KK	2017.03.03
Checked	KK	2017.03.03
Approved	KB	2017.03.03

ORIGINATOR	UNIVERSITY COLLEGE LONDON HOSPITALS NHS FOUNDATION TRUST
SCALE	1 : 200
FIRST ISSUE DATE	2016.02.16
PROPOSED STATUS	S2 - FOR INFORMATION

DRAWING TITLE		Proton Beam Therapy - Phase 4						
		General Arrangement Plans First Floor Level						
PROJECT	ISSUER	AREA	LEVEL	TYPE	TRADE	SEQUENCE	REV	
P4PBT	STW	AAB	01	GA	A31	111081	H	