

- GEN - General Arrangement Plans Drawing Issue Register

1-Project	2-Issuer	3-Area	4-Level	5-Type	6-Trade	Sheet Number	8-Proposed Status	Current Revision	Sheet Name	Current Revision Date	Current Revision Description
P4PBT	STW	ALL	SL	SCH	A31	111001	S2 - Issued For Information	I	General Arrangement Plans Drawing Issue Register	2017.03.03	GEN Set of Drawings / Issued For Approval
P4PBT	STW	ABG	B5	GA	A31	111011	S2 - FOR INFORMATION	G	General Arrangement Plans Basement B5	2017.03.03	GEN Set of Drawings / Issued for Approval
P4PBT	STW	ABG	B4	GA	A31	111021	S2 - FOR INFORMATION	H	General Arrangement Plans Basement B4	2017.03.03	GEN Set of Drawings / Issued for Approval
P4PBT	STW	ABG	B3	GA	A31	111031	S2 - FOR INFORMATION	H	General Arrangement Plans Basement B3	2017.03.03	GEN Set of Drawings / Issued for Approval
P4PBT	STW	ABG	B2	GA	A31	111041	S2 - FOR INFORMATION	G	General Arrangement Plans Basement B2	2017.03.03	GEN Set of Drawings / Issued for Approval
P4PBT	STW	ABG	M2	GA	A31	111051	S2 - FOR INFORMATION	G	General Arrangement Plans Basement 2 Mezzanine	2017.03.03	GEN Set of Drawings / Issued for Approval
P4PBT	STW	AAB	B1	GA	A31	111061	S2 - FOR INFORMATION	H	General Arrangement Plans Basement 1	2017.03.03	GEN Set of Drawings / Issued For Approval
P4PBT	STW	AAB	GND	GA	A31	111071	S2 - FOR INFORMATION	I	General Arrangement Plans Ground Floor Level	2017.03.03	GEN Set of Drawings / Issued For Approval
P4PBT	STW	AAB	01	GA	A31	111081	S2 - FOR INFORMATION	H	General Arrangement Plans First Floor Level	2017.03.03	GEN Set of Drawings / Issued for Approval
P4PBT	STW	AAB	02	GA	A31	111091	S2 - For Information	H	General Arrangement Plans Second Floor Level	2017.03.03	GEN Set of Drawings / Issued for Approval
P4PBT	STW	AAB	03	GA	A31	111101	S2 - FOR INFORMATION	H	General Arrangement Plans Third Floor Level	2017.03.03	GEN Set of Drawings / Issued for Approval
P4PBT	STW	AAB	04	GA	A31	111111	S2 - FOR INFORMATION	H	General Arrangement Plans Fourth Floor Level	2017.03.03	GEN Set of Drawings / Issued for Approval
P4PBT	STW	AAB	05	GA	A31	111121	S2 - FOR INFORMATION	G	General Arrangement Plans Fifth Floor Level	2017.03.03	GEN Set of Drawings / Issued for Approval
P4PBT	STW	AAB	06	GA	A31	111131	S2 - FOR INFORMATION	G	General Arrangement Plans Sixth Floor Level	2017.03.03	GEN Set of Drawings / Issued for Approval
P4PBT	STW	AAB	RF	GA	A31	111141	S2 - FOR INFORMATION	F	General Arrangement Plans Roof Level	2017.03.03	GEN Set of Drawings / Issued for Approval
P4PBT	STW	ALL	SL	SEC	A31	111200	S2 - FOR INFORMATION	I	General Section - Sheet 1 of 8	2017.03.03	GEN Set of Drawings / Issued for Approval
P4PBT	STW	ALL	SL	SEC	A31	111201	S2 - FOR INFORMATION	I	General Section - Sheet 2 of 8	2017.03.03	GEN Set of Drawings / Issued for Approval
P4PBT	STW	ALL	SL	SEC	A31	111202	S2 - FOR INFORMATION	I	General Section - Sheet 3 of 8	2017.03.03	GEN Set of Drawings / Issued for Approval
P4PBT	STW	ALL	SL	SEC	A31	111203	S2 - FOR INFORMATION	I	General Section - Sheet 4 of 8	2017.03.03	GEN Set of Drawings / Issued for Approval
P4PBT	STW	ALL	SL	SEC	A31	111204	S2 - FOR INFORMATION	I	General Section - Sheet 5 of 8	2017.03.03	GEN Set of Drawings / Issued for Approval
P4PBT	STW	ALL	SL	SEC	A31	111205	S2 - FOR INFORMATION	I	General Section - Sheet 6 of 8	2017.03.03	GEN Set of Drawings / Issued for Approval
P4PBT	STW	ALL	SL	SEC	A31	111206	S2 - FOR INFORMATION	I	General Section - Sheet 7 of 8	2017.03.03	GEN Set of Drawings / Issued for Approval
P4PBT	STW	ALL	SL	SEC	A31	111207	S2 - FOR INFORMATION	D	General Section - Sheet 8 of 8	2017.03.03	GEN Set of Drawings / Issued for Approval
<b>TOTAL NO. WASTE BINS ALL LEVELS:</b> 30 x 1100LTR BIN; 28 x 770LTR BIN; 14 x LINEN CAGE											

**LOCATION OF DISPOSAL HOLDS PER FLOOR & NO OF WASTE BINS - GA MARK-UP - 2017.05.30**  
 (mark-up on latest GA's as per above Issue Register, issued on 3rd March 2017)

**SCOTT TALLON WALKER ARCHITECTS**

I	2017.03.03	GEN Set of Drawings / Issued For Approval	STW	KK	KK	KB
Rev	DATE	REVISION HISTORY	Dsg	Drw	Chk	App

DRAWING TITLE									
Proton Beam Therapy - Phase 4									
General Arrangement Plans Drawing Issue Register									
PROJECT	ISSUER	AREA	LEVEL	TYPE	TRADE	SEQUENCE	REV		
P4PBT	STW	ALL	SL	SCH	A31	111001	I		



**Head Office:**  
 Elizabeth House,  
 39 York Road,  
 London, SE1 7NQ.  
 Tel: 020 7401 0020  
 Fax: 020 7401 0030  
 www.bouygues-uk.com

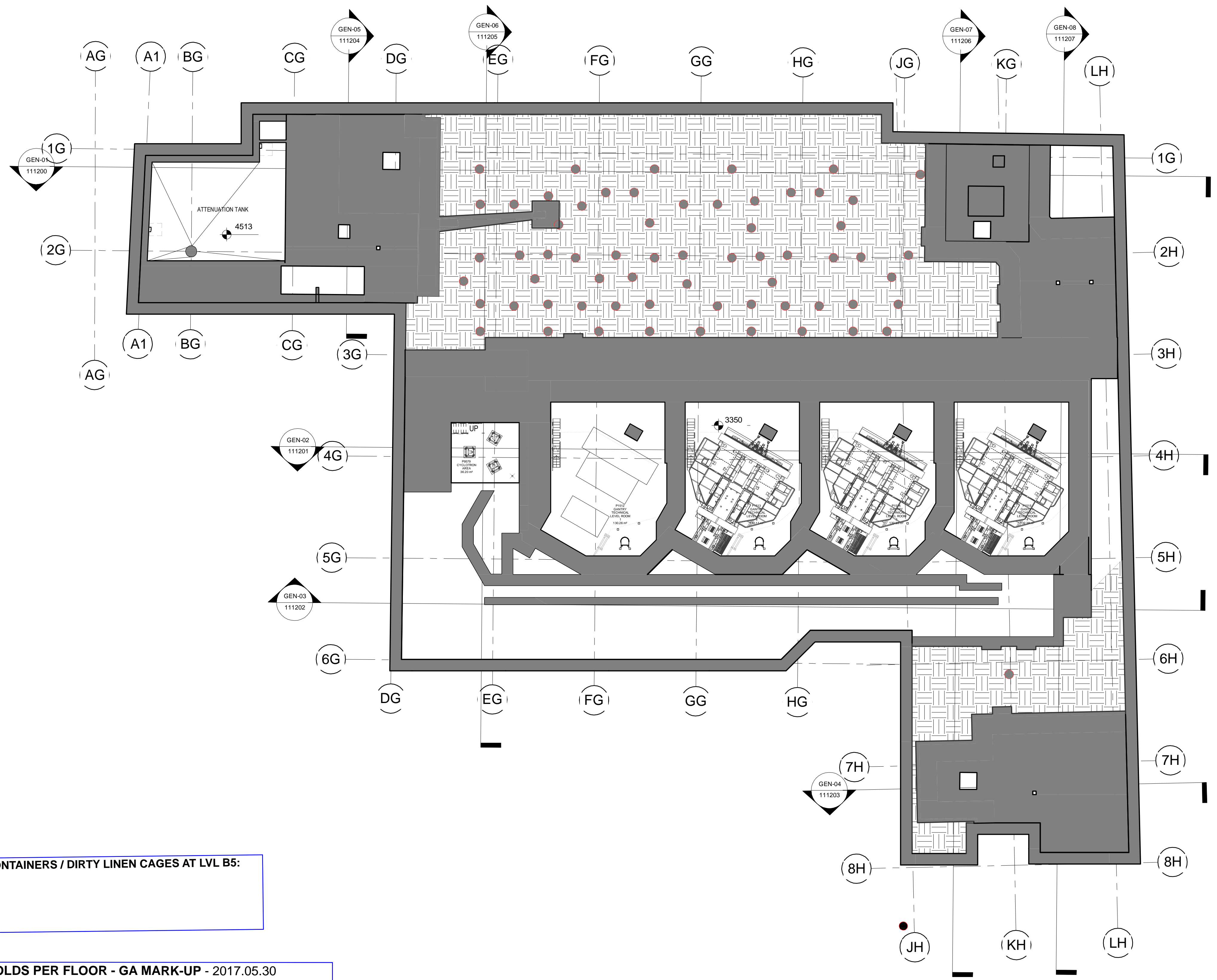
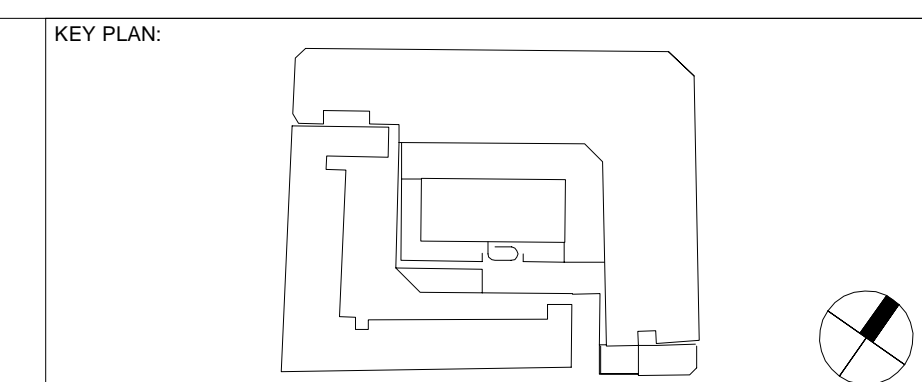
University College London Hospitals NHS Foundation Trust

ORIGINATOR

**Scott Tallon Walker Architects**

	Name	Signature	Date
Designed by	STW		2017.03.03
Drawn by	KK		2017.03.03
Checked	KK		2017.03.03
Approved	KB		2017.03.03

SCALE	@ A3	BIM FILE NAME	P4PBT-STW-AAB-SL-M3-A31-100051
FIRST ISSUE DATE	2016.02.16	PROPOSED STATUS	S2 - Issued For Information



**TOTAL NUMBER OF WASTE CONTAINERS / DIRTY LINEN CAGES AT LVL B5:**  
No Disposal Holds at level B5.

**LOCATION OF DISPOSAL HOLDS PER FLOOR - GA MARK-UP - 2017.05.30**  
(mark-up on latest GA's Rev. G for drawing sequence 111011, issued on 3rd March 2017)  
**SCOTT TALLON WALKER ARCHITECTS**

1 111011-Basement Level B5  
111011 1:200

NOTES:

Rev	DATE	REVISION HISTORY	Dsg	Drw	Chk	App
G	2017.03.03	GEN Set of Drawings / Issued for Approval	STW	RG	KK	KB
F	2017.01.27	GEN set of drawings / Issued for Acceptance	STW	KK	KK	KB
E	2016.10.07	Issued for Acceptance	STW	MDM	KK	KB
D	2016.08.03	S1-Issued For Coordination Rooms to be provided by BDCT for PTE	STW	MDM	KK	KB
C	2016.06.03	Updated to incorporate comments received under PMC206 and EWN008 as per MoM of 05/05/2016 Issued For Acceptance	STW	MDM	KK	KB
B	2016.02.20	Issued for Approval	STW	MDM	KK	KB



**BOUYGUES**  
**Head Office:**  
Elizabeth House,  
39 York Road,  
London, SE1 7NG.  
Tel:020 7401 0020  
Fax:020 7401 0030  
www.bouygues-uk.com

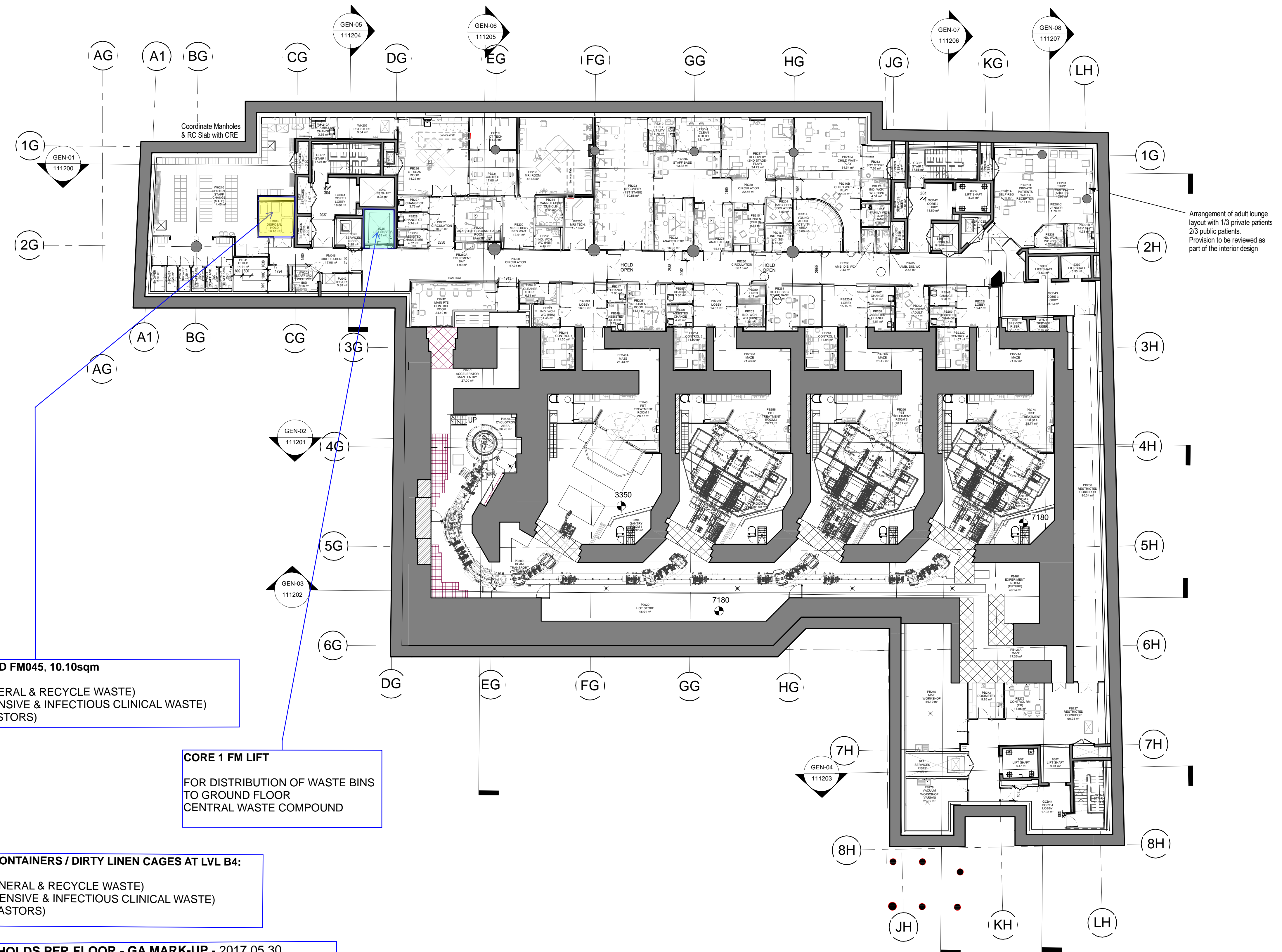
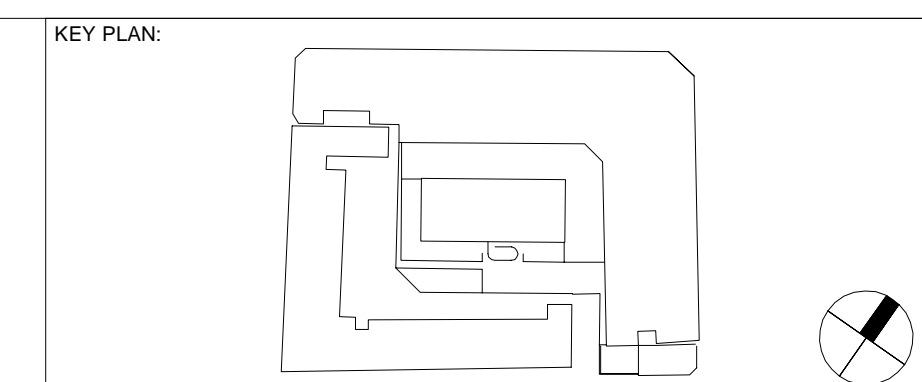
University College London Hospitals **NHS** Scott Tallon Walker Architects  
NHS Foundation Trust

Name	Signature	Date
Designed by	STW	2017.03.03
Drawn by	KK	2017.03.03
Checked	KK	2017.03.03
Approved	KB	2017.03.03

ORIGINATOR	SCALE	BIM FILE NAME
111011	1 : 200	P4PBT-STW-ABG-SL-M3-A31-100030
FIRST ISSUE DATE	PROPOSED STATUS	
2015.06.09	S2 - FOR INFORMATION	

DRAWING TITLE									
Proton Beam Therapy - Phase 4									
General Arrangement Plans Basement B5									
PROJECT	ISSUER	AREA	LEVEL	TYPE	TRADE	SEQUENCE	REV		
P4PBT	STW	ABG	B5	GA	A31	111011	G		





**LVLB4, CORE1: DISPOSAL HOLD FM045, 10.10sqm**  
 2 x 1100LTR WHEELIE BIN (GENERAL & RECYCLE WASTE)  
 2 x 770LTR WHEELIE BIN (OFFENSIVE & INFECTIOUS CLINICAL WASTE)  
 (1 x METAL LINEN CAGE ON CASTORS)

**CORE 1 FM LIFT**  
 FOR DISTRIBUTION OF WASTE BINS  
 TO GROUND FLOOR  
 CENTRAL WASTE COMPOUND

**TOTAL NUMBER OF WASTE CONTAINERS / DIRTY LINEN CAGES AT LVL B4:**  
 2 x 1100LTR WHEELIE BIN (GENERAL & RECYCLE WASTE)  
 2 x 770LTR WHEELIE BIN (OFFENSIVE & INFECTIOUS CLINICAL WASTE)  
 (1 x METAL LINEN CAGE ON CASTORS)

**LOCATION OF DISPOSAL HOLDS PER FLOOR - GA MARK-UP - 2017.05.30**  
 (mark-up on latest GA's Rev. H for drawing sequence 111021, issued on 3rd March 2017)

**SCOTT TALLON WALKER ARCHITECTS**

1 111021-Basement Level B4  
 111021 1:200

NOTES:

Rev	DATE	REVISION HISTORY	Dsg	Drw	Chk	App
H	2017.03.03	GEN Set of Drawings / Issued for Approval	STW	RG	J	KB
G	2017.01.27	GEN set of drawings / Issued for Acceptance	STW	KK	JK	KB
F	2016.10.07	Issued for Acceptance	STW	MDM	S	KB
E	2016.08.03	S1-Issued For Coordination Rooms to be provided by BDCT for PTE	STW	MDM	S	KB
D	2016.06.03	Updated to incorporate comments received under PMC206 and EWN008 as per MoM of 05/05/2016 Issued For Acceptance	STW	MDM	S	KB
C	2016.03.24	Issued For Approval	STW	MDM	S	KB



**BOUYGUES**  
**Head Office:**  
 Elizabeth House,  
 39 York Road,  
 London, SE1 7NG.  
 Tel: 020 7401 0020  
 Fax: 020 7401 0030  
 www.bouygues-uk.com

University College London Hospitals NHS Foundation Trust

Name	Signature	Date
Designed by	STW	2017.03.03
Drawn by	KK	2017.03.03
Checked	KK	2017.03.03
Approved	KB	2017.03.03

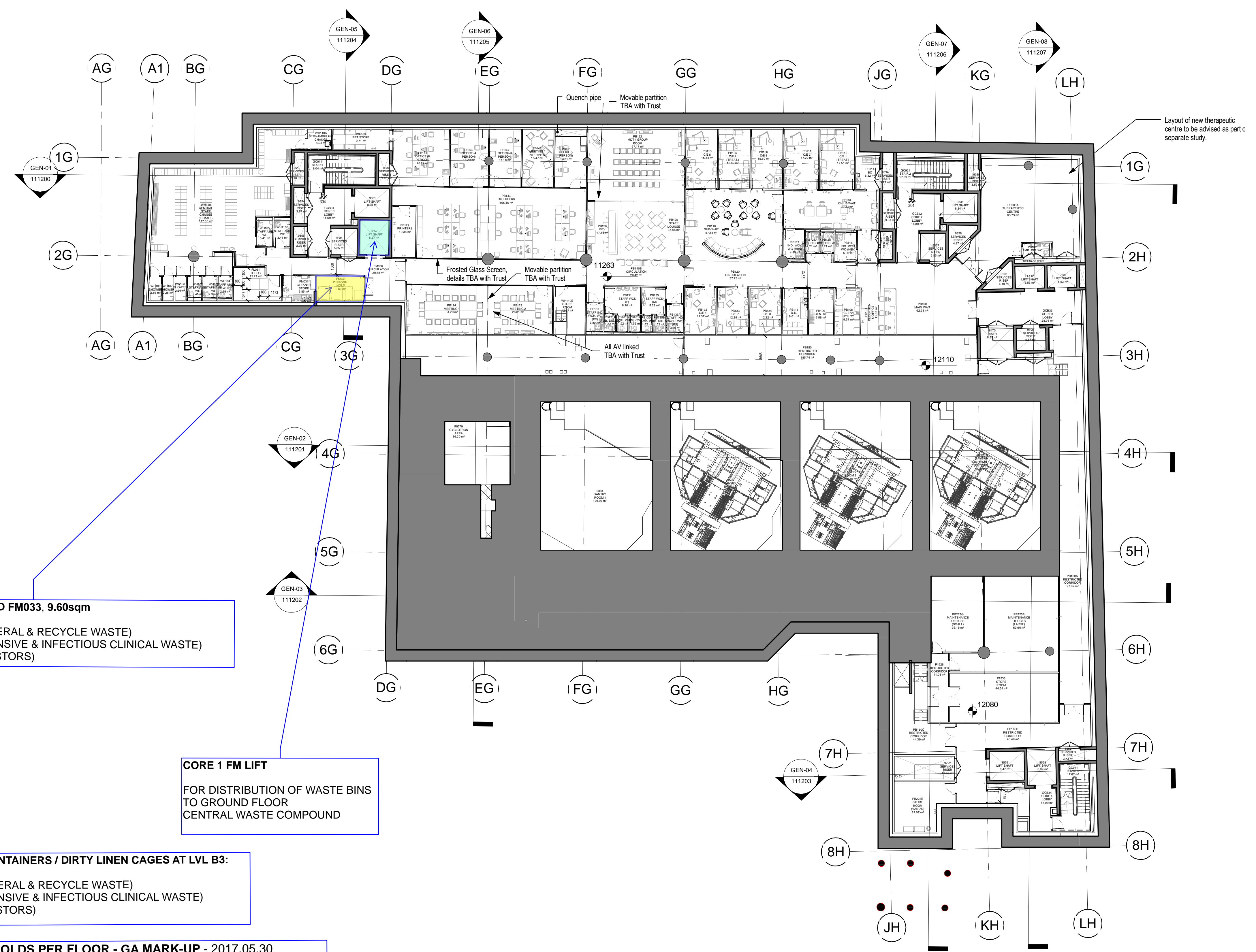
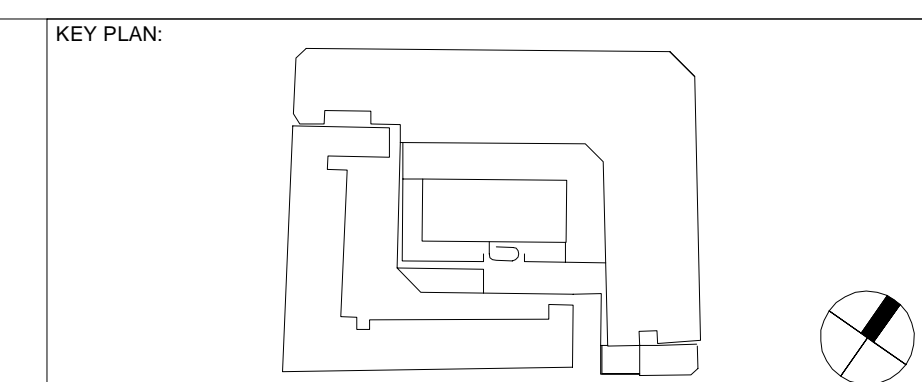
ORIGINATOR: Scott Tallon Walker Architects

SCALE	BIM FILE NAME
1 : 200	P4PBT-STW-ABG-SL-M3-A31-100030
FIRST ISSUE DATE	PROPOSED STATUS
2015.06.09	S2 - FOR INFORMATION

DRAWING TITLE: Proton Beam Therapy - Phase 4  
 General Arrangement Plans Basement B4

PROJECT	ISSUER	AREA	LEVEL	TYPE	TRADE	SEQUENCE	REV
P4PBT	STW	ABG	B4	GA	A31	111021	H





**LVLB3, CORE1: DISPOSAL HOLD FM033, 9.60sqm**  
 2 x 1100LTR WHEELIE BIN (GENERAL & RECYCLE WASTE)  
 1 x 770LTR WHEELIE BIN (OFFENSIVE & INFECTIOUS CLINICAL WASTE)  
 (1 x METAL LINEN CAGE ON CASTORS)

**CORE 1 FM LIFT**  
 FOR DISTRIBUTION OF WASTE BINS  
 TO GROUND FLOOR  
 CENTRAL WASTE COMPOUND

**TOTAL NUMBER OF WASTE CONTAINERS / DIRTY LINEN CAGES AT LVL B3:**  
 2 x 1100LTR WHEELIE BIN (GENERAL & RECYCLE WASTE)  
 1 x 770LTR WHEELIE BIN (OFFENSIVE & INFECTIOUS CLINICAL WASTE)  
 (1 x METAL LINEN CAGE ON CASTORS)

**LOCATION OF DISPOSAL HOLDS PER FLOOR - GA MARK-UP - 2017.05.30**  
 (mark-up on latest GA's Rev. H for drawing sequence 111031, issued on 3rd March 2017)

**SCOTT TALLON WALKER ARCHITECTS**

1 111031-Basement Level B3  
 111031 1 : 200

NOTES:

Rev	DATE	REVISION HISTORY	Dsg	Drw	Chk	App
H	2017.03.03	GEN Set of Drawings / Issued for Approval	STW	RG	KK	KB
G	2017.01.27	GEN set of drawings / Issued for Acceptance	STW	KK	KK	KB
F	2016.10.07	Issued for Acceptance	STW	MDM	KS	KB
E	2016.08.03	S1-Issued For Coordination Rooms to be provided by BDCI for PTE	STW	MDM	KS	KB
D	2016.06.03	Updated to incorporate comments received under PMC206 and EWIN09 as per MoM of 05/05/2016 Issued For Acceptance	STW	MDM	KS	KB
C	2016.03.24	Issued For Approval	STW	MDM	KS	KB

ALL REVISIONS

Rev	DATE	REVISION HISTORY	Dsg	Drw	Chk	App
H	2017.03.03	GEN Set of Drawings / Issued for Approval	STW	RG	KK	KB
G	2017.01.27	GEN set of drawings / Issued for Acceptance	STW	KK	KK	KB
F	2016.10.07	Issued for Acceptance	STW	MDM	KS	KB
E	2016.08.03	S1-Issued For Coordination Rooms to be provided by BDCI for PTE	STW	MDM	KS	KB
D	2016.06.03	Updated to incorporate comments received under PMC206 and EWIN09 as per MoM of 05/05/2016 Issued For Acceptance	STW	MDM	KS	KB
C	2016.03.24	Issued For Approval	STW	MDM	KS	KB



**BOUYGUES**  
**Head Office:**  
 Elizabeth House,  
 39 York Road,  
 London, SE1 7NG,  
 Tel: 020 7401 0020  
 Fax: 020 7401 0030  
 www.bouygues-uk.com

University College London Hospitals NHS Foundation Trust

Name	Signature	Date
Designed by	STW	2017.03.03
Drawn by	KK	2017.03.03
Checked	KK	2017.03.03
Approved	KB	2017.03.03

ORIGINATOR

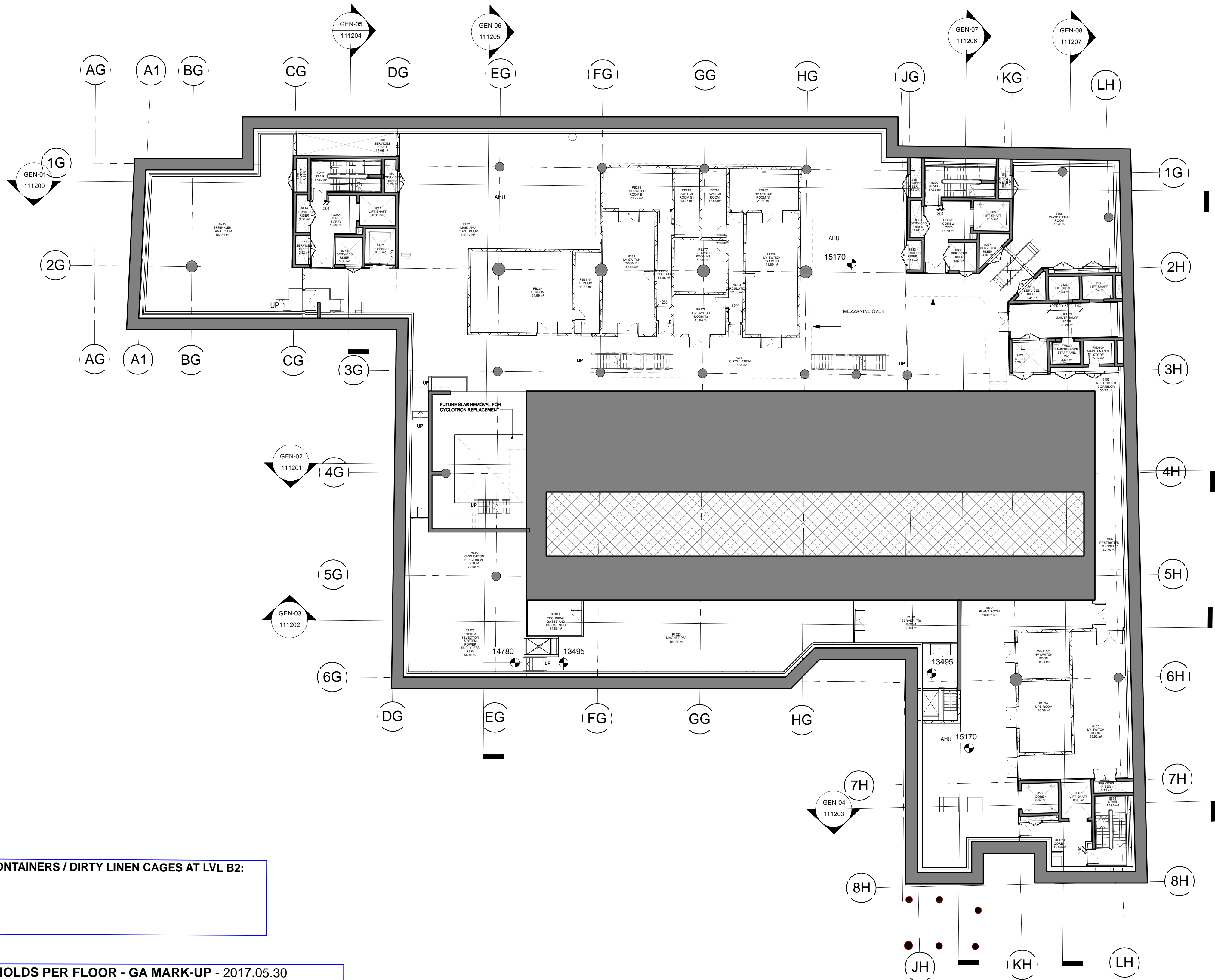
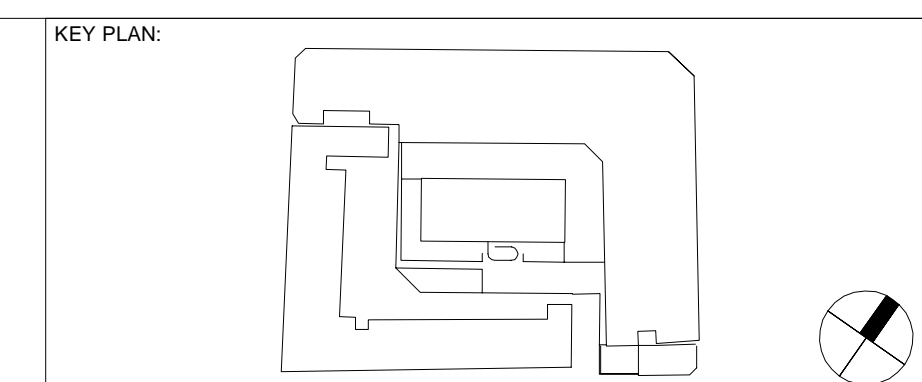
SCALE	BIM FILE NAME
1 : 200	P4PBT-STW-ABG-SL-M3-A31-100030
FIRST ISSUE DATE	PROPOSED STATUS
2015.06.09	S2 - FOR INFORMATION

DRAWING TITLE

Proton Beam Therapy - Phase 4  
 General Arrangement Plans Basement B3

PROJECT	ISSUER	AREA	LEVEL	TYPE	TRADE	SEQUENCE	REV
P4PBT	STW	ABG	B3	GA	A31	111031	H





**TOTAL NUMBER OF WASTE CONTAINERS / DIRTY LINEN CAGES AT LVL B2:**  
 No Disposal Holds at level B2.

**LOCATION OF DISPOSAL HOLDS PER FLOOR - GA MARK-UP - 2017.05.30**  
 (mark-up on latest GA's Rev. G for drawing sequence 111041, issued on 3rd March 2017)  
**SCOTT TALLON WALKER ARCHITECTS**

1 111041-Basement Level B2  
 111041 1:200

NOTES:

Rev	DATE	REVISION HISTORY	Dsg	Drw	Chk	App
G	2017.03.03	GEN Set of Drawings / Issued for Approval	STW	RG	KK	KB
F	2017.01.27	GEN set of drawings / Issued for Acceptance	STW	KK	KK	KB
E	2016.10.07	Issued for Acceptance	STW	MDM	KS	KB
D	2016.08.03	S1-Issued For Coordination Rooms to be provided by BDCI for PTE	STW	MDM	KS	KB
C	2016.06.03	Updated to incorporate comments received under PMC206 and EWIN008 as per MoM of 05/05/2016 Issued For Acceptance	STW	MDM	KS	KB
B	2016.02.20	Issued for Approval	STW	MDM	KK	KB



**BOUYGUES**  
**Head Office:**  
 Elizabeth House,  
 39 York Road,  
 London, SE1 7NG.  
 Tel: 020 7401 0020  
 Fax: 020 7401 0030  
 www.bouygues-uk.com

University College London Hospitals **NHS** Scott Tallon Walker Architects  
 NHS Foundation Trust

Name	Signature	Date
Designed by	STW	2017.03.03
Drawn by	KK	2017.03.03
Checked	KK	2017.03.03
Approved	KB	2017.03.03

ORIGINATOR

SCALE	PROPOSED STATUS	FIRST ISSUE DATE
1 : 200	S2 - FOR INFORMATION	2015.06.09

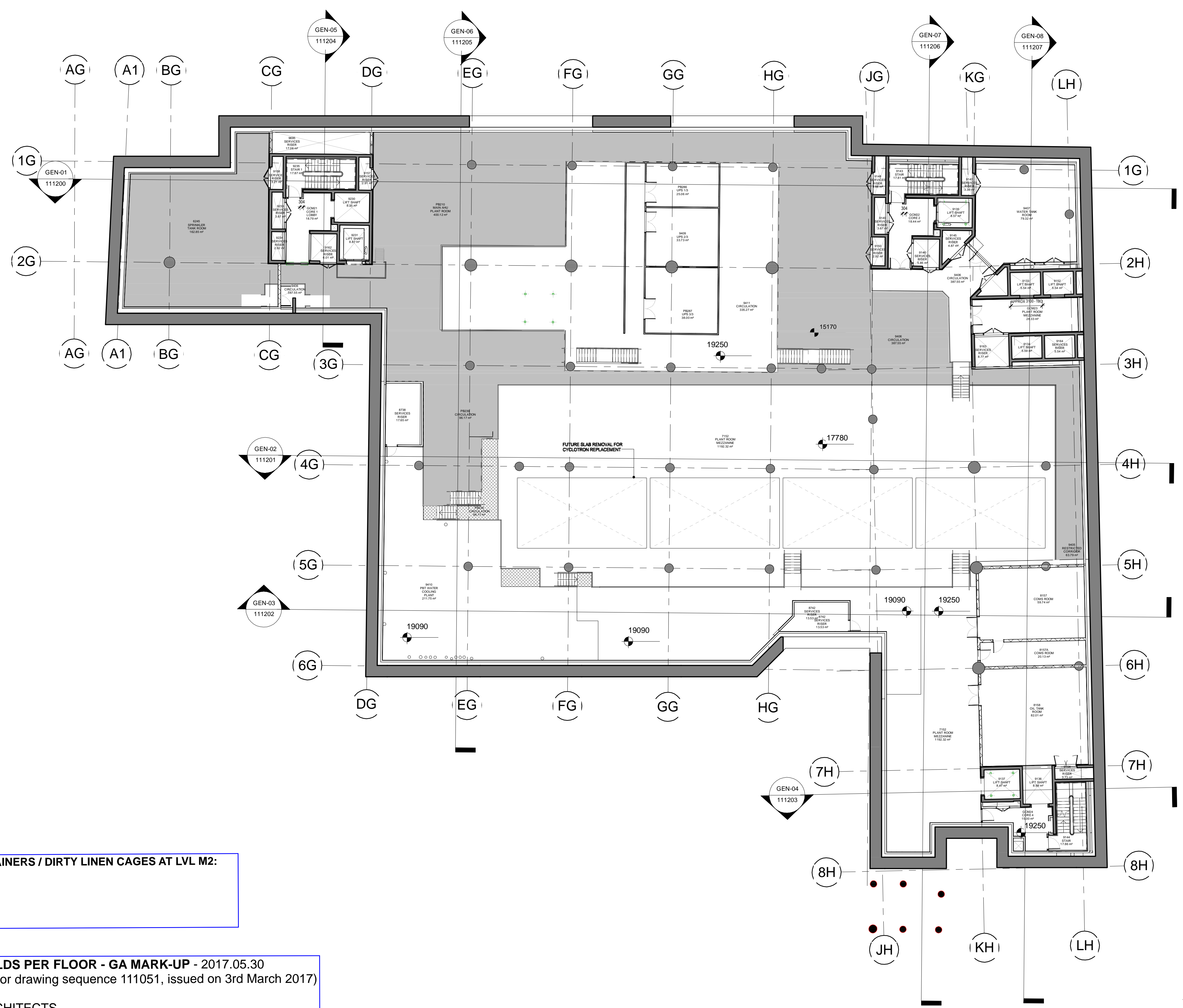
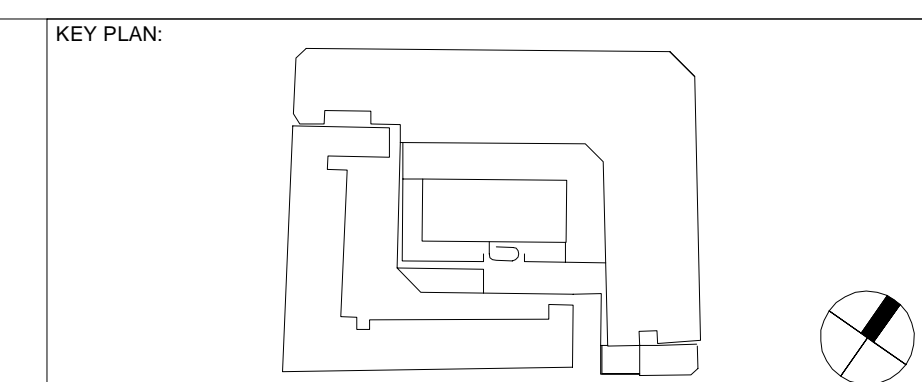
© A1 BIM FILE NAME: P4PBT-STW-ABG-SL-M3-A31-100030

DRAWING TITLE

Proton Beam Therapy - Phase 4  
 General Arrangement Plans Basement B2

PROJECT	ISSUER	AREA	LEVEL	TYPE	TRADE	SEQUENCE	REV
P4PBT	STW	ABG	B2	GA	A31	111041	G





**TOTAL NUMBER OF WASTE CONTAINERS / DIRTY LINEN CAGES AT LVL M2:**  
No Disposal Holds at level M2.

**LOCATION OF DISPOSAL HOLDS PER FLOOR - GA MARK-UP - 2017.05.30**  
(mark-up on latest GA's Rev. G for drawing sequence 111051, issued on 3rd March 2017)  
**SCOTT TALLON WALKER ARCHITECTS**

1 111051-Basement Mezzanine Level M2  
111051 1 : 200

NOTES:

ALL REVISIONS						
Rev	DATE	REVISION HISTORY	Dsg	Drw	Chk	App
G	2017.03.03	GEN Set of Drawings / Issued for Approval	STW	RG	K	KB
F	2017.01.27	GEN set of drawings / Issued for Acceptance	STW	KK	4K	KB
E	2016.10.07	Issued for Acceptance	STW	MDM	PS	KB
D	2016.08.03	S1-Issued For Coordination Rooms to be provided by BDCI for PTE	STW	MDM	PS	KB
C	2016.06.03	Updated to incorporate comments received under PMC206 and EWIN009 as per MoM of 05/05/2016 Issued For Acceptance	STW	STW	PS	KB
B	2016.02.20	Issued for Approval	STW	MDM	PS	KB



**BOUYGUES**  
**Head Office:**  
Elizabeth House,  
39 York Road,  
London, SE1 7NG.  
Tel: 020 7401 0020  
Fax: 020 7401 0030  
www.bouygues-uk.com

University College London Hospitals NHS Scott Tallon Walker Architects			
NHS Foundation Trust			
Name	Signature	Date	SCALE
Designed by	STW	2017.03.03	1 : 200
Drawn by	KK	2017.03.03	FIRST ISSUE DATE
Checked	KK	2017.03.03	PROPOSED STATUS
Approved	KB	2017.03.03	2015.06.09

ORIGINATOR		DRAWING TITLE	
SCALE	@ A1	Proton Beam Therapy - Phase 4	
BIM FILE NAME	P4PBT-STW-ABG-SL-M3-A31-100030	General Arrangement Plans Basement 2 Mezzanine	
PROJECT	P4PBT	ISSUER	STW
AREA	ABG	LEVEL	M2
TRADE	GA	SEQUENCE	A31
DATE	2017.03.03	REVISION	111051

PROJECT	ISSUER	AREA	LEVEL	TRADE	SEQUENCE	REVISION
P4PBT	STW	ABG	M2	GA	A31	111051