



10-11 King's Mews

London WC1N 2EN

Details pursuant of conditions following
grant of Full Planning Permission
2012/6315/P

May 2017

Rev P03

FRONT ELEVATION

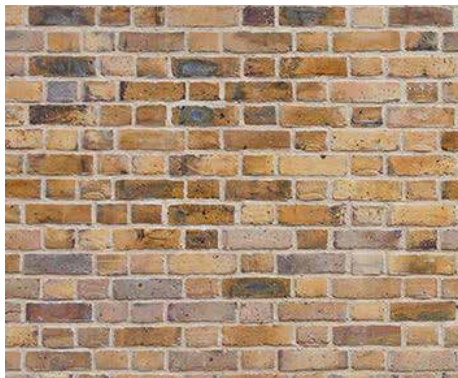
CONDITION 3



Materials

1. London yellow stock facing brick
2. Aluminium windows and doors heritage range
3. Clear structural glass balustrade
4. Panel garage doors
5. Back painted glass spandrel panel
6. Metal frame glazed conservatory
7. Movement Joint

Front elevation along King's Mews
Scale: NTS



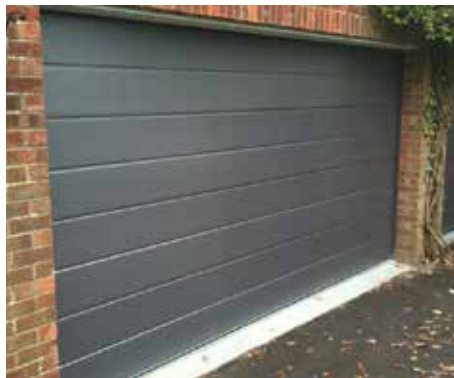
1. Traditional London yellow stock, Flemish bond



2. Aluminium frame windows and doors. Thin profile heritage range. RAL 7016



3. Clear structural glass balustrade to match adjacent properties. No top handrail bar



4. Panel 'up and over' secure garage doors. RAL 7016

REAR ELEVATION

CONDITION 3

Materials

1. London yellow stock facing brick
2. Aluminium windows and doors heritage range
3. Clear structural glass balustrade
4. Panel garage doors
5. Back painted glass spandrel panel
6. Metal frame glazed conservatory



6. Metal frame glazing 'Crittall' or similar approved. RAL 7016



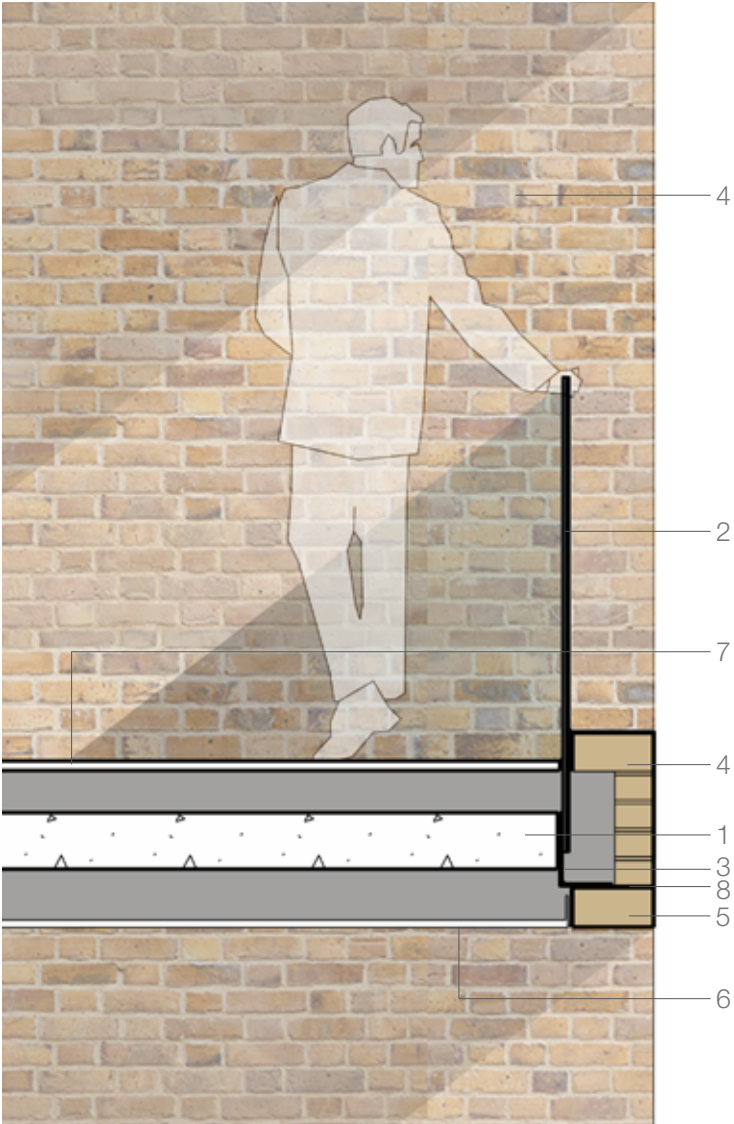
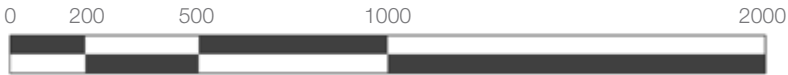
Rear elevation
Scale: NTS

SECTION DETAILS

CONDITION 4

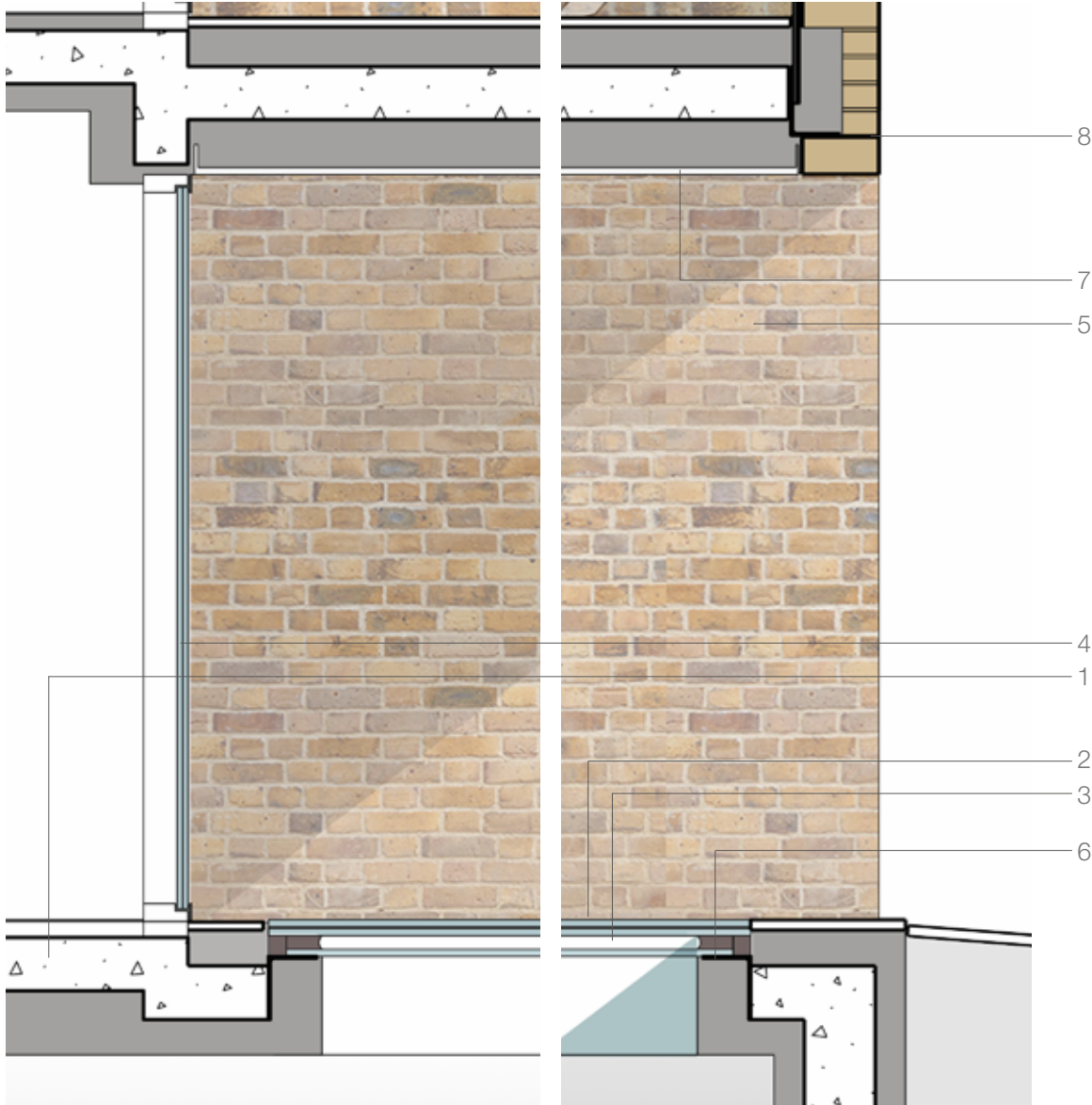


Section-Elevation
Scale: NTS



A. Glass balustrade detail
Scale 1:20 @ A3

- 1. Insulated RC slab
- 2. Structural glass balustrade fixed to slab edge
- 3. Brick supporting shelf angle
- 4. London yellow stock Flemish Bond facing brick reveals
- 5. Suspended brick soffit course
- 6. PPC aluminium soffit panel. RAL 9007 grey
- 7. Level access balcony decking
- 8. Movement Joint



B. Fenestration and pavement light detail
Scale 1:20 @ A3

- 1. Insulated RC slab
- 2. Structural glass flat pavement light top section- flush with top of pavement
- 3. Roof-light argon filled double glazing
- 4. 45mm wide PPC Aluminium window and door frames - full height. RAL 7016
- 5. London yellow stock Flemish Bond facing brick reveals
- 6. Glass support angle fixed to RC slab
- 7. PPC aluminium soffit panel. RAL 9007 grey
- 8. Movement Joint

MATERIAL SAMPLES

CONDITION 4

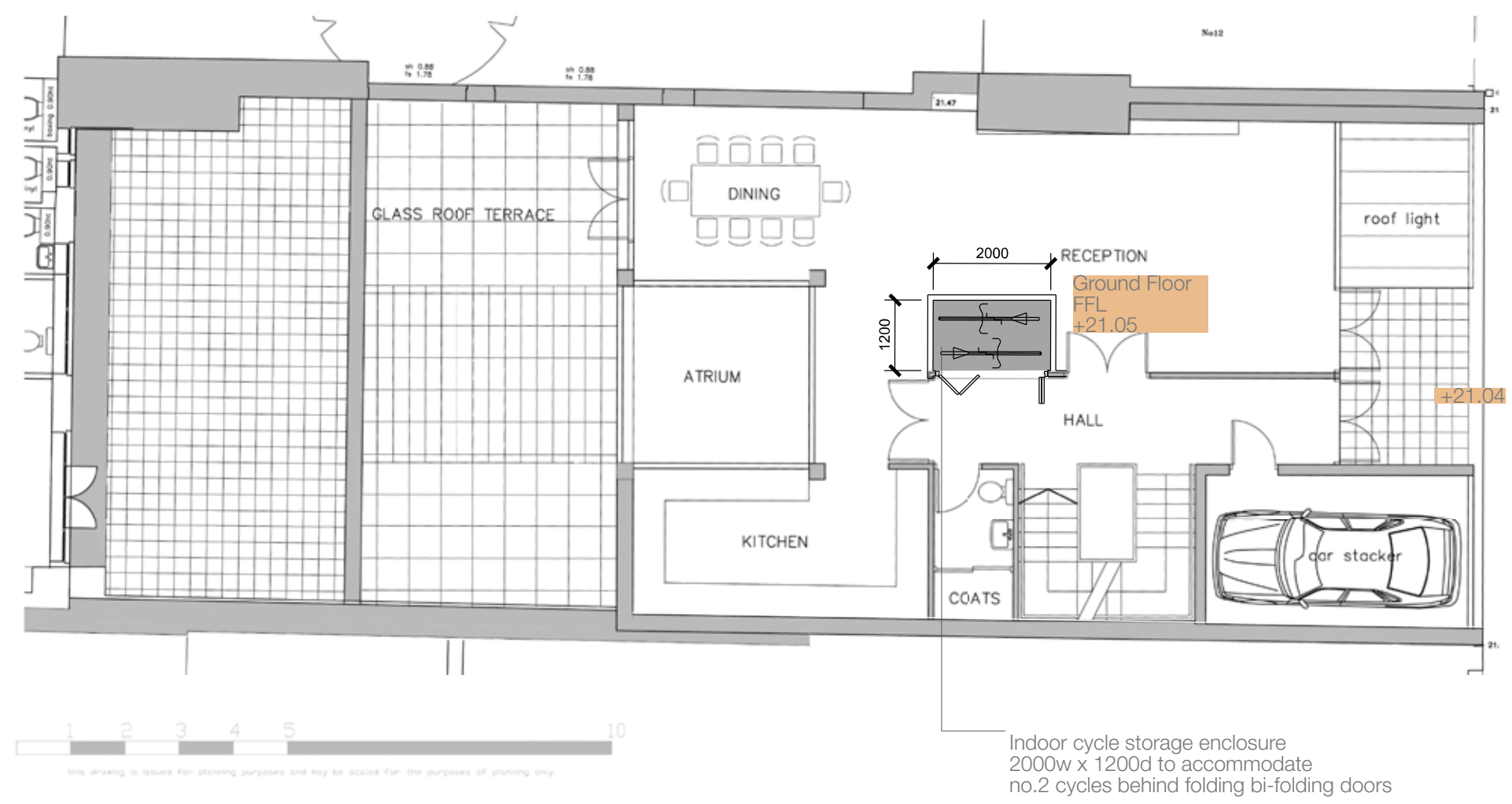


The following samples have been sent to London Borough of Camden Planning Department, as requested:

1. Window & Door Sample: Futura+, RAL 7016 (anthracite grey).
2. Brick: Tigra Multi supplied by Traditional Brick & Stone, proposed bond: Flemish.
3. Mortar: Light Brown Medium, supplied by Cemtex Mortars, proposed pointing: Wandsworth Smudge.
4. Balustrade Sample: 20mm clear toughened, laminated structural glass, with concealed fixings.

GROUND FLOOR PLAN - CYCLE STORAGE

CONDITION 7



Ground Floor Plan
Scale 1:100 @ A3

KING'S MEWS



Above
Examples of indoors cycle storage at floor level