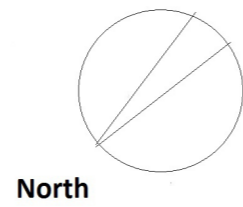
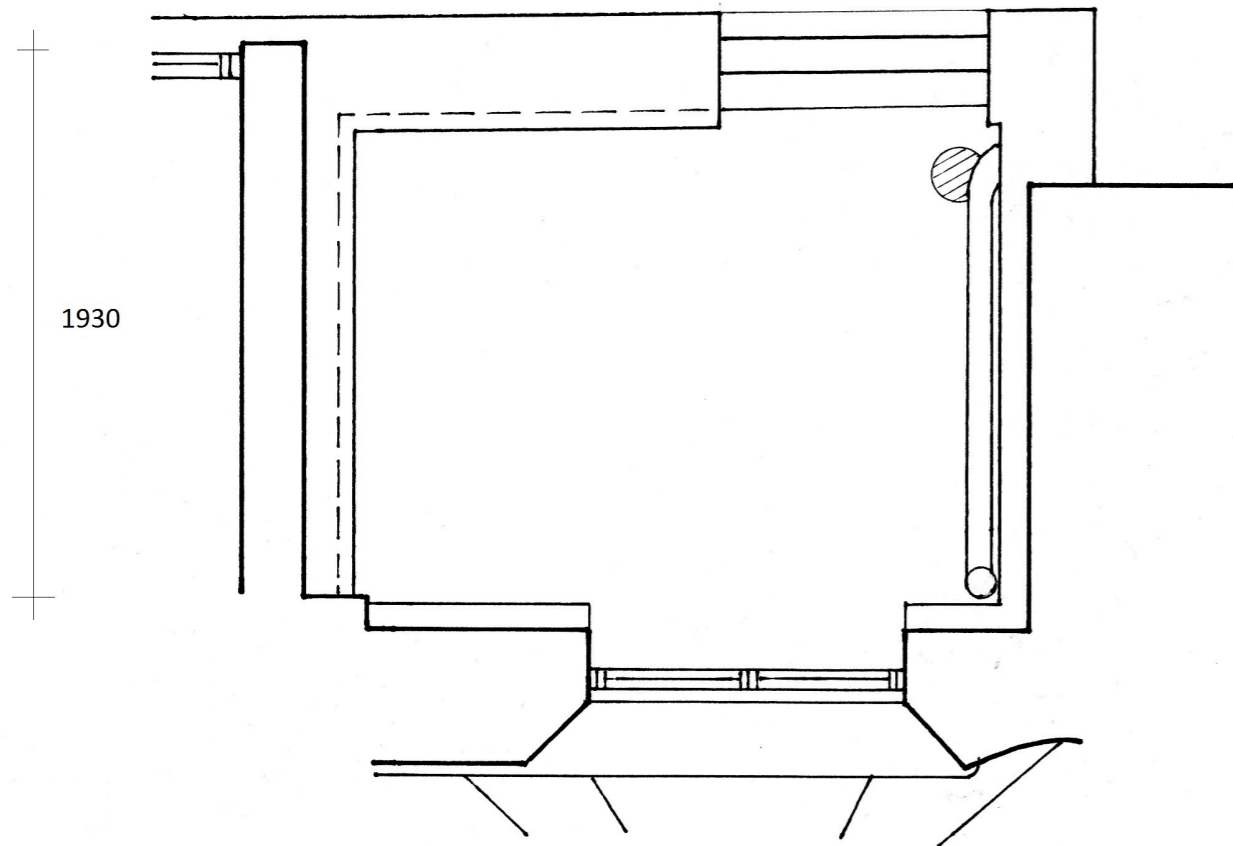


**EXISTING PLAN OF BALCONY**



2450

1930



**192 REGENTS PARK ROAD, LONDON NW.1  
PROPOSED REINSTATEMENT OF CONSERVATORY  
FOR LIZ HEAVENSTONE**

**RPR17.1** EXISTING PLAN AND ELEVATION OF BALCONY SCALE 1:25  
FEBRUARY 2017

MARTIN LIPSON ASSOCIATES  
ARCHITECT AND CONSERVATION ADVISERS

STEEPLE ASTON, OXFORDSHIRE OX25 4SR  
martin.lipson@btinternet.com