

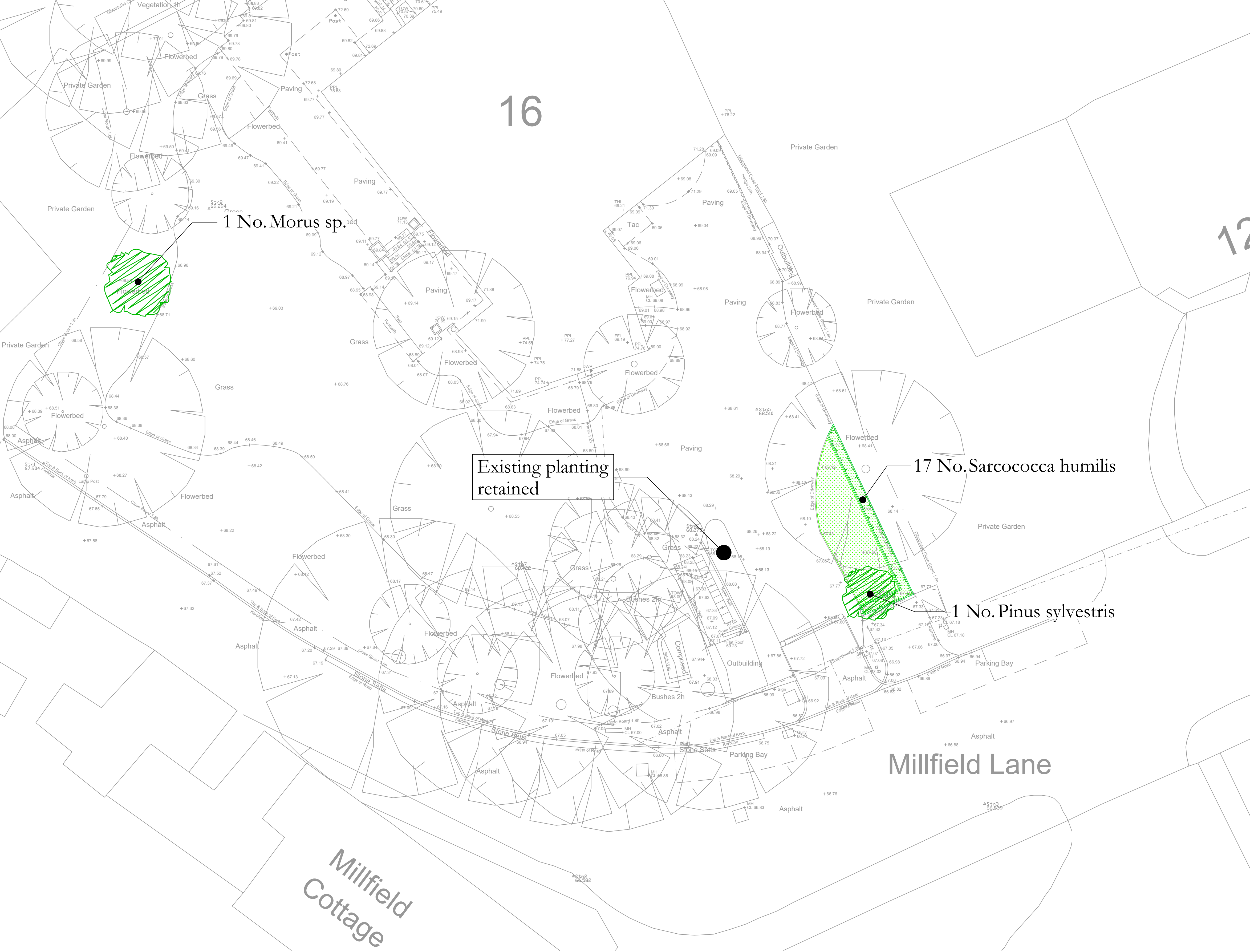
Plant Specification

Trees

Number	Species	Common Name	Height	Girth
1 No.	Pinus sylvestris	Scots Pine	3.5-4.0m	
1 No.	Morus sp.	Mulberry		16-18cm

Shrubs

Number	Species	Common Name	Pot Size	Density
17 No.	Sarcococca humilis	Himalayan sarcococca	3L	3/m ²



PLANTING ADJACENT NEW DRIVEWAY

OBJECTIVE

The existing driveway is being relocated further west. The current driveway will be removed and replaced with a simple soft landscape scheme to complement the verdant nature of the garden.

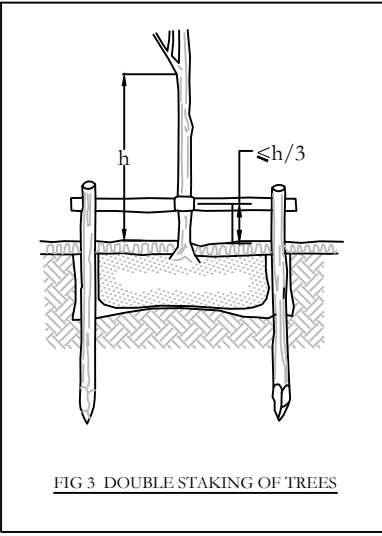
The planting also includes two new trees as specified in condition 6 of the planning consent.

THE PLANTING

The use of mostly exotic planting that tolerates shade has been chosen because of current growing conditions.

Specimen trees and shrubs to be pit planted in accordance with *BS4428:1989 Code of practice for general landscape operations (excluding hard surfaces)*.

All specimen trees to be supported by double stake and cross member as per Figure 3 below to suit species.



All planting beds and individual tree planting positions with grass, to be mulched to depth of 75mm with bark mulch (within 1m diameter circle centred on trunk of plant when within grass).

All plants shall be handled with care to avoid damage during transplant, off-loading storage and planting. Plants shall not be allowed to become desiccated.

GRASSED AREAS

All proposed grassed areas shall be graded, cultivated, prepared and seeded or turfed (according to contract requirements) in accordance with BS4428:1989 Code of practice for general landscape operations (excluding hard surfaces).

PROTECTION

Mammalian pests are not known to exist in the vicinity of the planting so the plants can be allowed to develop naturally.

MAINTENANCE

For period of 5 years post planting the planting shall be maintained as follows:

Replacement planting

Replacement of failed plants shall occur to achieve 90% stocking of original planting scheme after a period of 5 years. Species shall be replaced like-for like.

Firming in

Frost or drought can loosen the soil around each plant and each plant should be checked and the soil firmed as necessary.

Weeding

A weed free area of at least 1 metre diameter around each plant shall be maintained with 75mm of mulch to suppress weed growth.

Watering

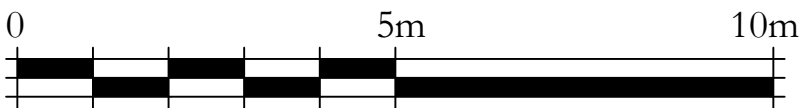
During the growing season newly planted trees and shrubs should be watered to ensure that the soil is kept constantly moist, although this will vary with local climate and soil types.

Rev A 13.06.17
Soft landscape updated.

jtk

Rev 0 26.05.17
Initial issue.

jtk



Key:

- Proposed soft landscape
- Proposed lawn
- Proposed trees
- Trees retained

CLIENT:
Cold As Ice Ltd

PROJECT:
16 Millfield Lane,
Highgate, Camden

TITLE:
Soft Landscape Plan

DRAWING NUMBER:
9452-KC-XX-YTREE-SLP02RevA

DATE: May 2017

SCALE: 1:100 @ A1

DRAWN BY: ML

CHECKED BY: JTK

Do not scale from this drawing: All dimensions to be checked on site

The copyright of this document resides with Ian Keen Limited unless assigned in writing by the company

IAN KEEN
LIMITED

Consultants for Trees, Landscapes
and Nature Conservation

Rollands Farm, Rollands Lane, Woburn, Farnham, Surrey GU10 5AS
Telephone: 01252 850096 Facsimile: 01252 851702 Email: mail@keenconsultants.co.uk