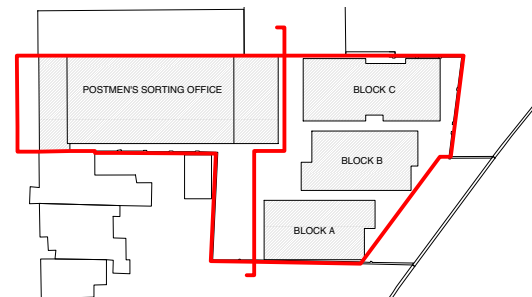
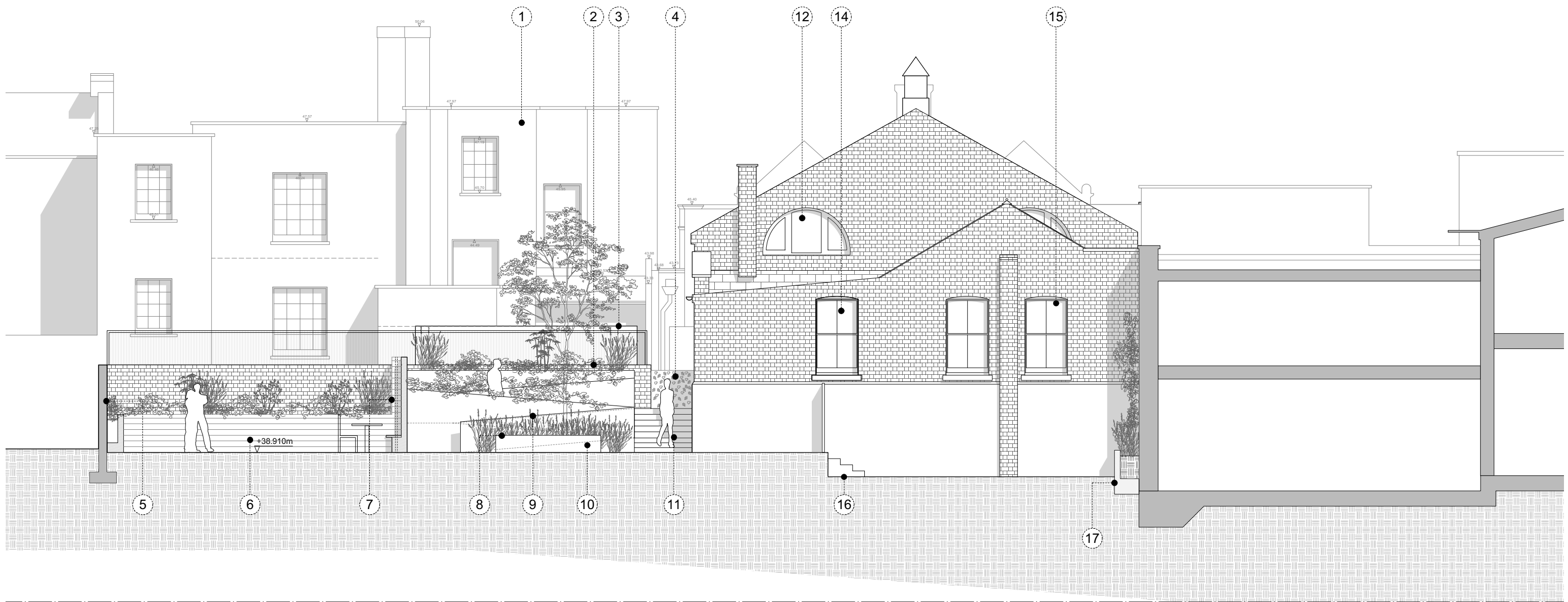
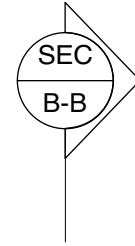
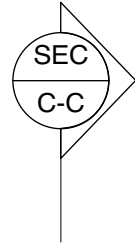
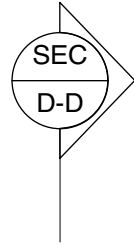


1. Neighboring house, No. 00 Leighton Road.
2. Brick boundary wall.
3. New trellis to replace existing and continue along boundary wall; to height of existing shed in neighboring garden.
4. Perforated metal balustrade.
5. Brick boundary wall.
6. Pigmented concrete planter and retaining wall to match pigment of adjacent block.
7. Garden walls in pigmented concrete and perforated metal panel sections.
8. Feature tree at arrival space.
9. Smooth finish, aggregated concrete planters to proposed ramp.
10. Metal, perforated bench.
11. Steps with granite effect paving.
12. Existing windows repaired.
14. Existing external doorway replaced with new timber sash window to match existing timber sash windows.
15. Existing windows retained and repaired.
16. Excavated level for Block C and courtyard space.
17. Pigmented concrete planter to boundary wall (accommodating retaining elements for excavations).



DO NOT SCALE OFF THIS DRAWING ALL AMBIGUITIES OR DISCREPANCIES TO BE REPORTED TO ARCHITECT BEFORE COMMENCING		Revisions		Project	
Notes		Date:	Rev:	STUDIO MACKERETH	
		04/04/17	A	ARCHITECTS 78 ST PANCRAS WAY LONDON NW1 0PB	
		13/04/17	B	TELEPHONE + 4 4 (0)20 7042 8335 EMAIL: INFO@STUDIOMACKERETH.COM	
		26/06/17	C	Project No. 015	
				Drawing No. 153	
				Revision C	
				Scale 1:100 @ A3	
				Creation Date April 2015	
				Status	
				Plan	