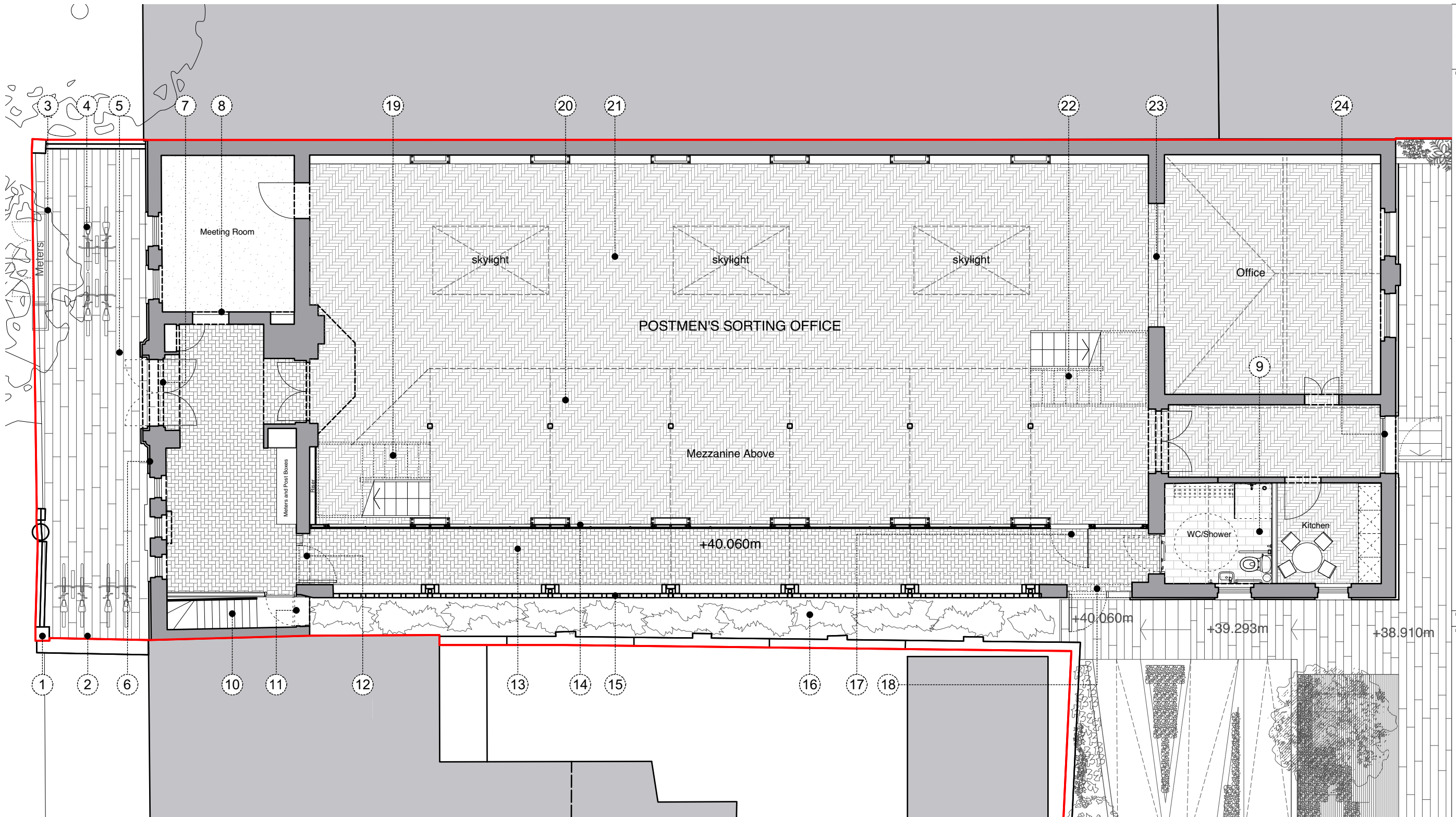


DO NOT SCALE OFF THIS DRAWING
ALL AMBIGUITIES OR DISCREPANCIES
TO BE REPORTED TO ARCHITECT
BEFORE COMMENCING

Notes

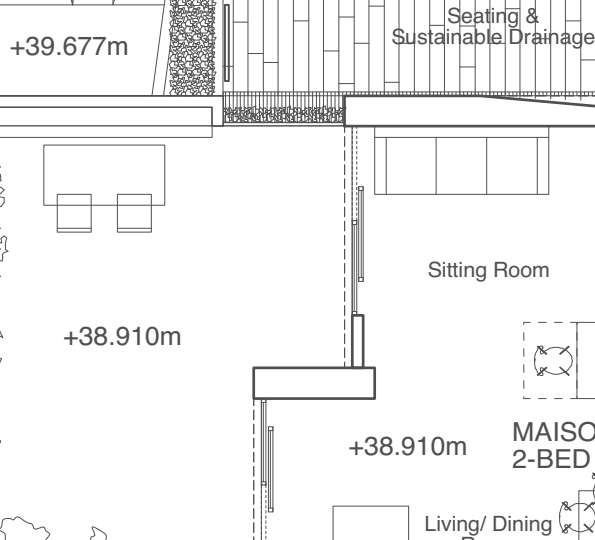


1. Existing railings and red Postbox retained in existing position.
2. Long Stay Bike stands for office space: Sheffield type stands in metal to match perforated panels.
3. Perforated metal panel enclosure for meters, with bench and backlit building no.
4. Short Stay Bike stands for office space: Sheffield type stands in metal to match perforated panels.
5. New floor finish to match walkway and external spaces to rear.

6. Postmen's Office stone carefully cleaned and brickwork restored.
7. Existing doors refurbished, redecorated and adjusted to swing outward.
8. Existing door retained.
9. New accessible WC/Shower installed.
10. Existing stairs to basement refurbished and refinished.
11. Existing fire door replaced.
12. New opening made in brick wall to proposed internal walkway and new secure door installed.
13. Floor finish in walkway in 'staffordshire blue' brick slips laid in herringbone pattern on existing substrate.

14. New glazed curtain walling system to commercial unit in-between solid wall sections with black painted aluminium frames with double glazed units. Solid enclosures to house VRV heating / cooling fan coil units.
15. Brick filigree introduced below existing cill level.
16. Low planting to external space between sorting office and boundary wall.
17. Fire rate, glazed escape doors in glazing system.
18. Opening in brickwork to provide access to rear area and walkway with secure door.
19. Proposed stair to new mezzanine.

20. New mezzanine above, with columns installed to match existing grid in line with existing window openings and curtain walling framing.
21. Existing pine parquet flooring in herringbone pattern re-laid throughout sorting office commercial spaces.
22. Proposed stair to new mezzanine.
23. Partition removed from existing opening, which is reinstated to provide access to commercial space.
24. New full height window installed in opening made from removing existing doors.



Revisions

Date:	Rev:	Details:
14/12/15	A	Mezzanine and stairs updated further to conservation officer's comments.
xx/xx/16	B	Updated for new listed building application.
27/02/17	C	Issued as draft for conservation officer's comments.
04/04/17	D	Issued to Camden following conservation officer's comments.
13/04/17	E	Issued to Camden following conservation officer's comments.
26/06/17	F	Issued to Camden for LB Application.

**STUDIO
MACKERETH**

ARCHITECTS
78 ST PANCRAS WAY
LONDON
NW1 0PB
TELEPHONE +44 (0)20 7042 8335
EMAIL: INFO@STUDIOMACKERETH.COM

Project
30 Leighton Road

Drawing Title
Proposed Post Office Plans - GF

Scale 1:100 @ A3	Creation Date April 2015	Status Plan
---------------------	-----------------------------	----------------

Project No. 015	Drawing No. 131	Revision F
--------------------	--------------------	---------------

