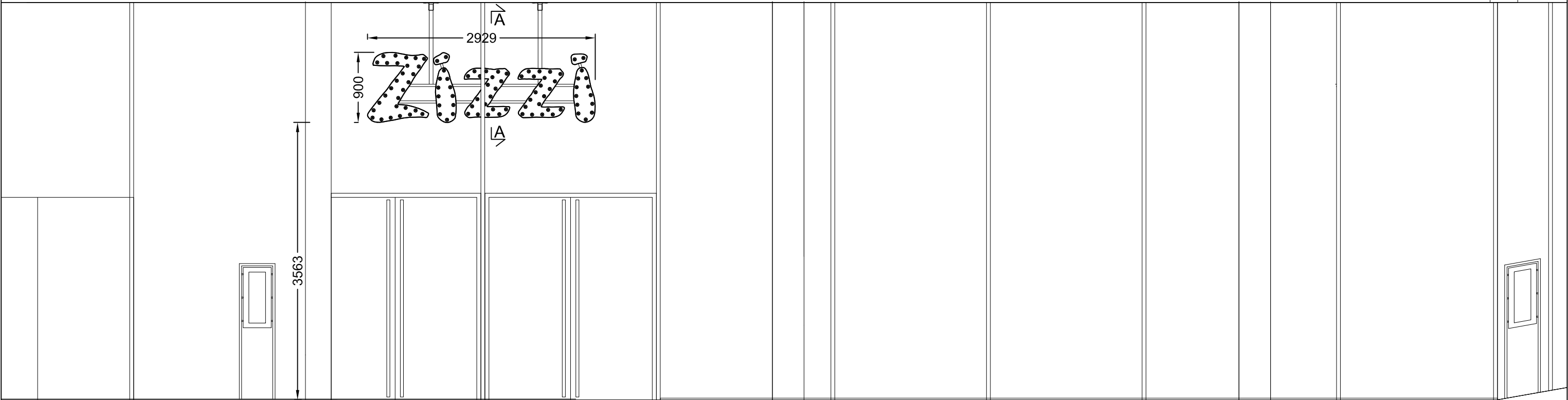
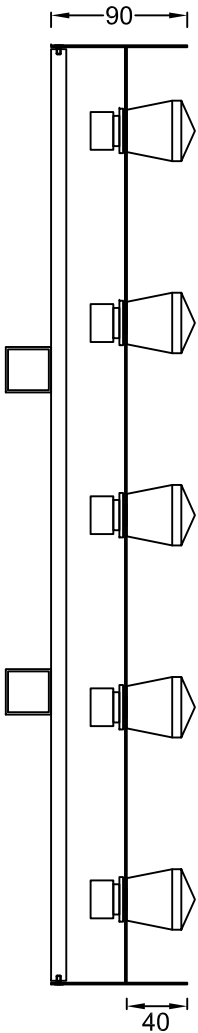


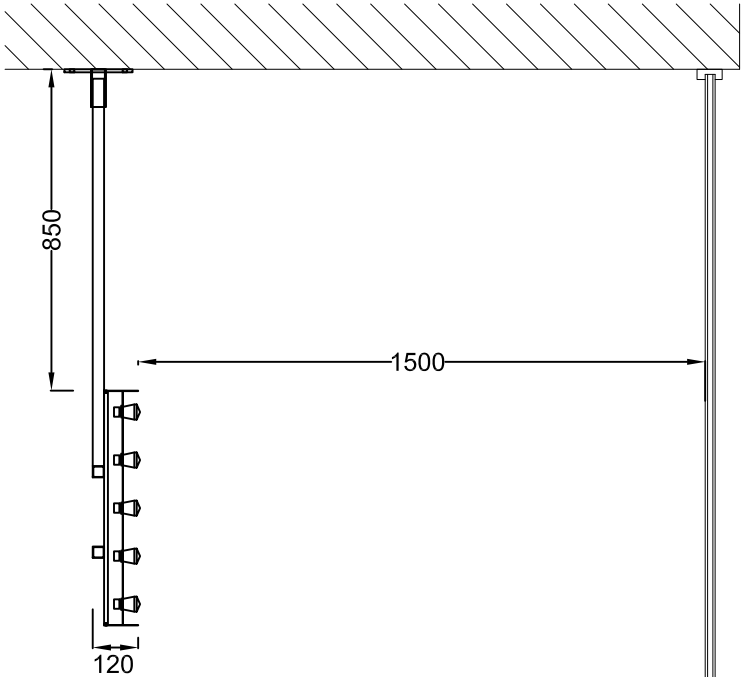
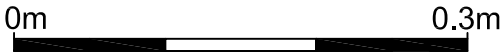
Proposed



Front Elevation
Scale 1:50



Section A-A through the text
Scale 1:5
Built-up 'Zizzi' letters have polished 1.2mm copper faces set back within 0.9mm aged copper returns for an open-trough appearance. Faces are fitted with 40Ø 12V clear fairground lights which have low energy warm white LEDs. Blue-grey RAL 5008 backs are screw fixed to two horizontal blue-grey RAL 5008 steel rails which largely match the existing rails. The set of rails are fixed behind the glazing in the same way as the existing set.



Section through the letters and the glazing
Scale 1:20



D	Text removed	16/06/17
C	Vinyl removed	19/04/17
F	Hanging sign removed	26/06/17
E	Hanging sign shown Layout alterations	21/06/17

		Client Zizzi	
		Address/Job details Unit 8 Central St Giles Plaza Covent Garden WC2H 8AB	
		Proposed Signage	
		Job No 1865	
		Drawn by DN	Date 28/03/17
		Scale As specified (A3)	Drawing No 595391-3
			Rev F