



Example of cast iron coalhole plate, later replacement - Medium Significance.



Example of cast iron coalhole plate, probably original - Medium - Significance.



Example of cast iron coalhole plate, probably original - Medium Significance.



Example of cast iron coalhole plate, later replacement - Medium Significance.

York Stone Paving and Granite Kerbs - Medium Significance. Note: wide cemented joints indicate that paving has been relaid in modern times.



Regent's Park Terrace front elevation viewed from the north, overall - High Significance.



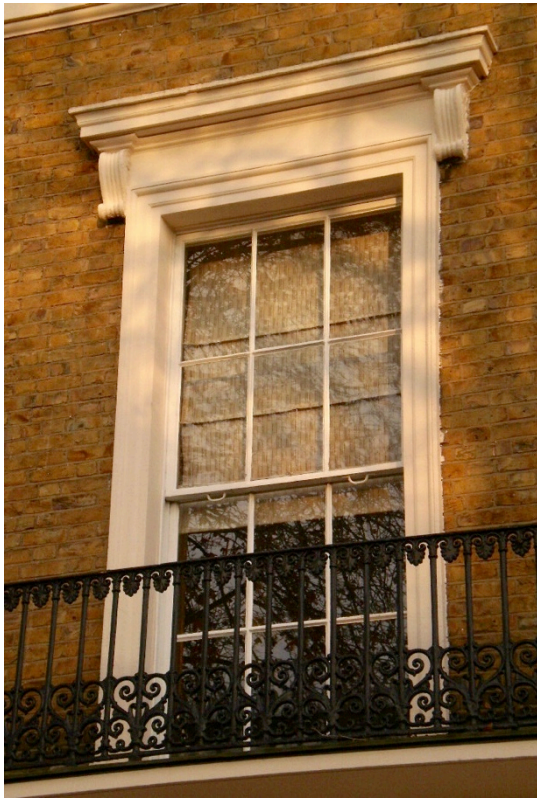
Regent's Park Terrace view from the south, overall - High Significance.



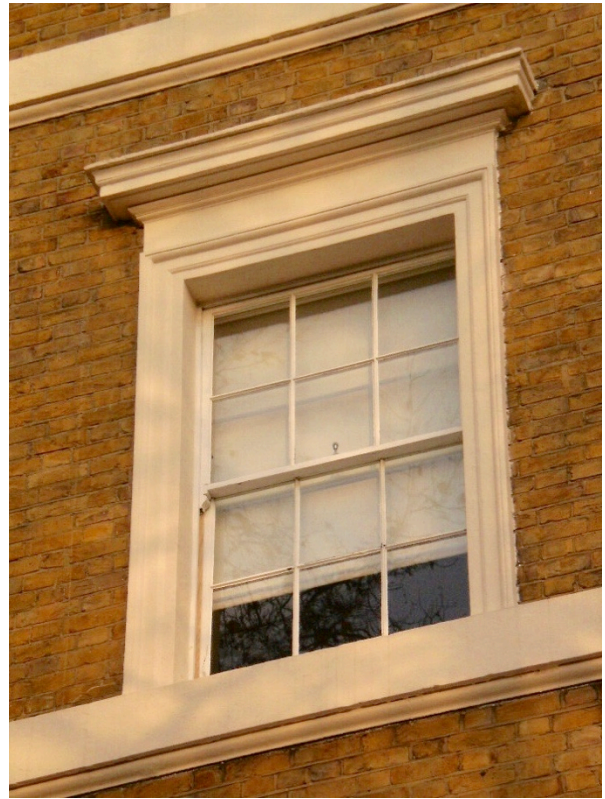
No. 22 Regent's Park Terrace, probably a later infill - High Significance.



First floor stone balcony with cast iron railings. Windows with stucco architraves and corniced heads to first and second floors, Sliding sash windows. High Significance.



Detail of First Floor Window with bracketed cornice - High Significance



Detail of Second Floor Window with cornice - High Significance.



Parapet cornice with modillions, plain storey band below third floor windows. High Significance.



South end of terrace. Basement and ground floors stuccoed with incised horizontal rustication bandings. High Significance.



Detail of balcony and cast iron railings - High Significance.



No. 8 Blue Plaque - social and cultural aspect of occupation by Humphrey Jennings - Medium Significance.



Original Basement lightwell and entrance step's railings & gate to basement steps - High Significance.



Original Basement lightwell railings terminated at a brick pillar. Original brick garden wall to No. 1 with brick dentils and Portland stone coping - High Significance.



Foliated pointed finials to common rails and ball tipped foliated finial to queen post - High Significance.



Foliate moulding to queen post - High Significance.