



16 Park Village East. Early 19<sup>th</sup> C (1825-36). Detached villa Listed Grade II\*. Regent's Park Conservation Area.



2 Prince Albert Road, Mid 19<sup>th</sup> C semi-detached villa. Listed Grade II. Primrose Hill Conservation Area.



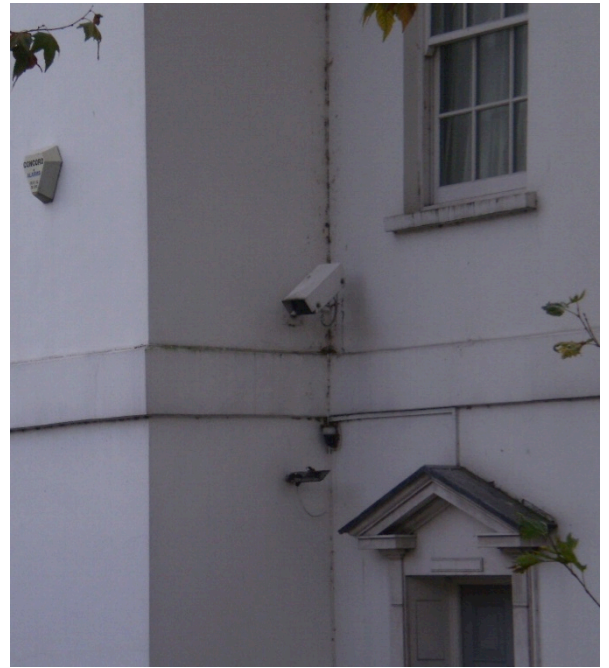
3 Prince Albert Road, detached Mid 19<sup>th</sup> C villa. Listed Grade II. Primrose Hill Conservation Area.



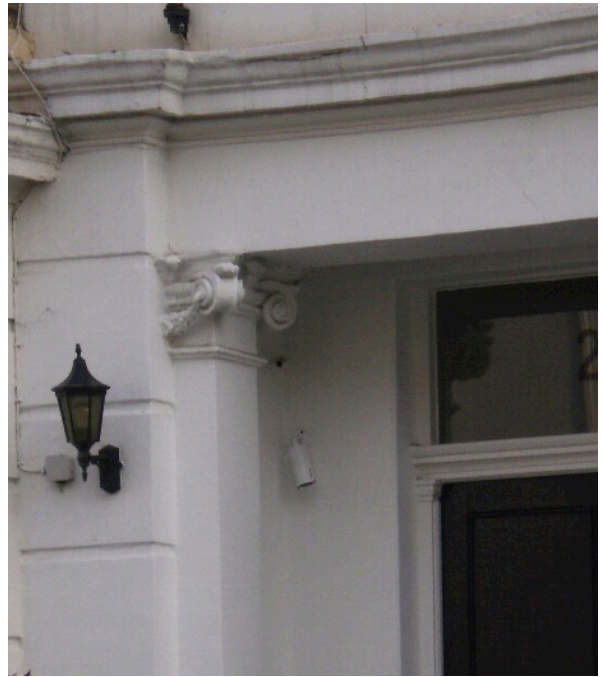
4 Prince Albert Road, Mid 19<sup>th</sup> C detached villa. Listed Grade II. Primrose Hill Conservation Area.



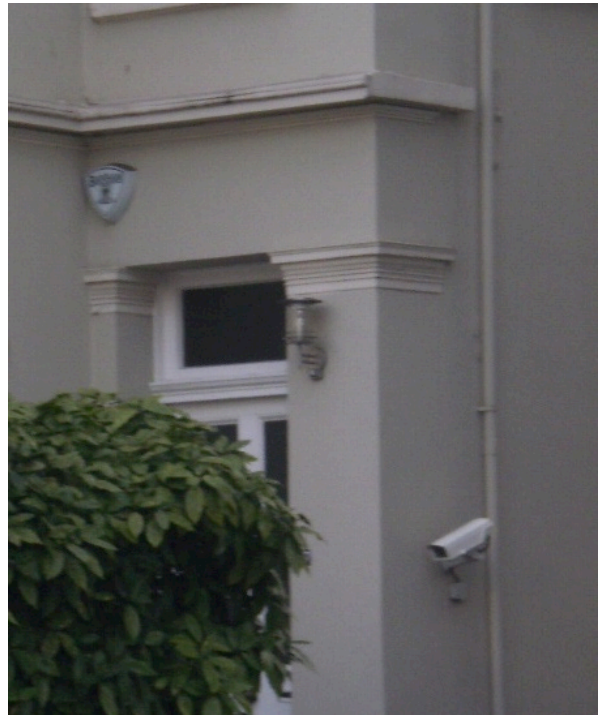
6 Prince Albert Road, Mid 19<sup>th</sup> C detached villa. Listed Grade II. Primrose Hill Conservation Area.



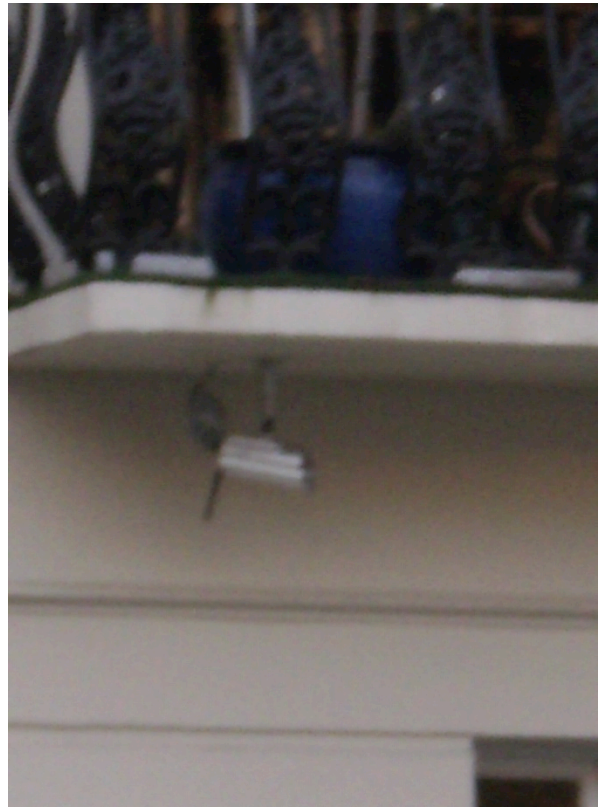
63 Gloucester Avenue. Mid 19<sup>th</sup> C semi-detached villa. Primrose Hill Conservation Area.



29 St Mark's Crescent. Mid 19<sup>th</sup> C terraced house. Primrose Hill Conservation Area.



27 Regent's Park Road. Mid 19<sup>th</sup> C semi-detached villa. Primrose Hill Conservation Area.



83 Albert Street, Mid 19<sup>th</sup> C (1845) terraced house. Listed Grade II. Camden Town Conservation Area.



102 Albert Street, Mid 19<sup>th</sup> C (1845) terraced house. Listed Grade II. Camden Town Conservation Area.



126 Albert Street. Modern building. Camden Town Conservation Area.



The Jewish Museum, 129 Albert Street. Mid 19<sup>th</sup> C (1845) terraced house. Listed Grade II. Camden Town Conservation Area.



110 Parkway, early 20<sup>th</sup> C (1904) townhouse. Camden Town Conservation Area.



158 Arlington Road, modern terraced house in traditional style. Camden Town Conservation Area.

APPENDIX 2

<b>Decisions Analysis -Approvals and Refusals of Listed Building Consent for Security Cameras in LB Camden as at 7<sup>th</sup> December 2017</b>				
Data retrieved 1.12.2016 & 7.12.2016				
<b>Application No</b>	<b>Site Address</b>	<b>Development Description</b>	<b>Decision Date</b>	<b>Decision</b>
2015/3397/L	Hampstead Town Hall Centre 213 Haverstock Hill London NW3 4QP	Installation of CCTV Camera system on whole centre.	pending	
2015/3840/L	46 Bedford Square London WC1B 3DP	Installation of 3 CCTV cameras to front elevation of the existing Embassy (Sui generis use) (Retrospective).	pending	
2016/4139/L	2 Marylebone Road London NW1 4DF	Installation of 13 external CCTV cameras and 1 external sounder/strobe unit at the property at 2 Marylebone Road, 1-9 Albany Street and Peto Place.	pending	
2016/5691/L	46-47 Russell Square London WC1B 4JP	External and internal alterations to include installation replacement of CCTV camera and installation of access control system to Grade II Listed Building [Retrospective]	pending	
2016/5960/L	Chalk Farm Stable, Provender Store, Long Stable and Tack Room The Stables Market Chalk Farm Road London NW1 8AH	Alterations including the installation of electrical services, CCTV cameras, lighting and Wi-Fi access points to the Chalk Farm Stable, Provender Store, Long Stable and Tack Room.	pending	
2016/6009/L	British Museum Great Russell Street London WC1B 3DG	Security upgrade comprising installation of external CCTV cameras.	pending	
9070057	South east corner Kings Cross Railway Station Euston Road N1	Installation of one additional closed circuit television security camera as shown on drawing number 89DT154/1/1 and 1 x unnumbered copy of photograph revised by letter dated 13th September 1990.	7.11.1990	Granted
9370278	St Pancras Station Euston Road NW1	The installation of CCTV surveillance cameras. as shown on drawing numbers 4313.215.0932/B 0933A 8213 110.	4.3.1994	Granted
9470164	138-142 Holborn WC1	Installation of 2 CCTV cameras at roof level behind gables to the front elevation and the installation of 3 stainless steel sign-plates to the service access off Brooke Street. as shown on drawing numbers 7974/11/TP1-7.	28.10.1994	Granted
9470150	North and South Arches Chester Terrace NW1	Installation of sixteen security cameras as shown on drawing numbers ACT/01 /02 and /03 and photographs and as revised by letter dated 12th December 1994.	20.1.1995	Granted
9570091	British Museum Great Russell Street WC1	Installation of fourteen CCTV cameras. as shown on drawing numbers 1 to 5 6A 7 to 12 13A 14 and 15.	2.6.1995	Granted



L9600405R1	Ainsworth Estate, Boundary Road Alexandra Road, Alexandra Place Langtry Walk, NW8	Package of works to Grade II listed Estate consisting of: new windows to match materials and appearance of existing, new external doors, repairs to refuge stores, repairs to roofs, internal works to tenants hall/community centre, erection of CCTV cameras, as shown on plan Nos: master plan, G203,G200,G2011,G202A, (ATH-L3), (ATH,RL2-10,11,12), (ATH,R31 Rev A), OX100.100.37A, (ATH L1/P), (ATH-R101), (ATH,R102B), G501, G503,G503,G300A, G900A, G901A,983/ V.04A,OX100,100 22-J8. (CCTV REV C, CCTV2 REV B, CCTV 3 REV B, CCTV4 REV B).	15.3.1997	Granted
LS9704312	British Museum, Great Russell Street,	The installation of 5 external CCTV cameras, as shown on drawing Nos: AJC/D2320D/1-3, 4A, 4B.	8.5.1997	Granted
LS9705155	Front of Chester Terrace, L11	The installation of 16 CCTV cameras as a replacement for 12 existing cameras on the front elevation. (as shown on 4 sheets of annotated photos; 1 brochure for Silent Witness V60 camera; camera location plan and letters dated 30/10/97 and 07/11/97)	6.2.1998	Granted
9570273R1	St Pancras Station Euston Road NW1	The provision of security cameras on the forecourt area, as shown by drawing numbers 265.107, B121/SK1 and letter dated 3rd September 1997 and details attached to letter dated 26th February 1998.	26.6.1998	Granted
LS9804656	10 Denmark Street, WC2	Retention of a white security camera on the front elevation, as shown by drawing number 3611/7	9.10.1998	Refused
LS9804355R1	109 Great Russell Street, WC1	Installation of a security camera over the front entrance door. (as shown on 1 unnumbered A4 sheet and 1 unnumbered MCH 38/ 60 specification)	15.10.1998	Granted
LS9804519	2 Marylebone Road, NW1	Retention of CCTV cameras on the rear elevation facing Peto Place, together with internal alterations, as shown on drawing numbers: M6161/AL(0)95 and AL(0)100A.	14.12.1998	Granted
LW9902823	Upper Terrace House Upper Terrace London NW3 6RL	Location of security camera at a high level on the house, As shown on drawing numbers; UTH.SC1.	18.7.2000	Refused
LSX0004854	University College London 55-59 Gordon Square London WC1H0NU	Installation of two CCTV cameras to external wall, one mounted on corner level with top of 1st floor windows and the other on corner on top of 1st floor extension at roof level, as shown by drawing numbers 99985 P 203 Rev 1, 99985 P 208 Rev 1, photo-montage of camera and technical details of camera.	3.10.2000	Refused
LSX0004858	University College London 30 Russell Square London WC1B5DP	Installation of CCTV camera to external wall to be mounted on corner above Russell Square sign, as shown by drawing numbers 99985 P 203 Rev 1, 99985 P 205 Rev 1, photo-montage of camera and technical details of camera.	3.10.2000	Refused
LSX0004860	University College London 34 Tavistock Square London WC1H9EZ	Installation of CCTV camera to external wall to be mounted centrally under first floor balcony, as shown by drawing numbers 99985 P 203 Rev 1, 99985 P 207 Rev 1, photo-montage and technical details of camera.	3.10.2000	Refused
LSX0004862	University College London 10 Woburn Square London WC1H0NS	Installation of CCTV camera to external wall to be mounted on corner level with bottom of first floor balcony, as shown by drawing numbers 99985 P 203 Rev 1, 99985 P 206 Rev 1, photo-montage and technical details of camera.	3.10.2000	Refused

LSX0004979	UCL Connaught Hall 36-45 Tavistock Square London WC1H9EX	Installation of CCTV camera to external wall (no 45). Camera to be mounted on corner under first floor balcony, as shown by drawing numbers 99985 P 203 Rev 1, 99985 P 209 Rev 1, photomontage of camera and technical details of camera.	3.10.2000	Refused
L9602977R1	Kings Cross Station, York Way, NW1	The erection of 2 CCTV cameras on the York Way elevation of Kings Cross Station, 7m above pavement level, as shown on drawing numbers 9517/17B and /18B.	20.2.2001	Granted
LSX0005229	Kings Cross Underground Station York Way Elevation Euston Road London N1	Relocation of two CCTV cameras on the York Way elevation at the junctions with Caledonia Street and Railway Street. As shown on drawing numbers; 2036_17 and 2036_18.	20.2.2001	Granted
LW9802145R1	Mount Vernon House, Mount Vernon, NW3	Retention of CCTV cameras, As shown on drawing numbers 998/204/7123A.	26.3.2001	Granted
LEX0100165	The Iveagh Bequest Kenwood House Hampstead Lane London N6	Upgrading the security system including the replacement/ relocation of existing CCTV cameras, as shown by drawing numbers AK1/1c, AK1/2a, AK1/3a, AK1/4a, AK1/5a, AK1/6a, AK1/7c, AK1/8b, AK1/9b, AK1/10b, AK1/11, AK/17, AK/18, 32226/105, AW1545-6 and letter dated 19th February 2001.	22.5.2001	Granted
LSX0104131	29 Tavistock Square London WC1H9EZ	Erection of a CCTV camera behind parapet at third floor level. As shown on letter dated 20th June 2001, unnumbered photomontage 4 x A4 sheet product information 2050 dome camera, unnumbered A4 sheet of parapet dome camera bracket, A3 sheet location plan.	6.10.2001	Granted
LSX0104133	36-45 Tavistock Square London WC1H9EX	Erection of a CCTV camera behind parapet at third floor level. As shown on letter dated 20th June 2001, unnumbered photomontage, 4 x A4 sheet product information 2050 dome camera, unnumbered A4 sheet of parapet dome camera bracket and A3 sheet location plan.	6.10.2001	Granted
LSX0104841	Senate House (North Block) Malet Street London WC1E7HU	Installation of 1 No. CCTV camera unit, as shown on: Figure 1 (Site Plan), Figure 2 (Photomontage showing position of camera on building), and Figure 3 (Camera information and technical data).	9.10.2001	Granted
LSX0104840	17 Russell Square London WC1B5EA	Installation of 1 CCTV camera unit, as shown on: Site Plan, Photomontage showing position of camera on building, Camera information and technical data.	11.12.2001	Granted
LWX0103821	Sun House 9 Frognal Way London NW3 6XE	Erection of 4 CCTV cameras to front and rear corners of building. As shown on Site plan, Location plan, 4 photos, 2x A4 extracts from Dennards brochure (Type 2010).	28.1.2002	Granted
LSX0004723	Central Club Hotel (Now Jurys Hotel) 16-22 Great Russell Street London WC1B3LR	Proposed exterior light fittings to illuminate the exterior of the building and security cameras, as shown on drawing numbers: 69A (superseded by 423D in respect of security cameras and carriage lanterns), 70C, 71A (superseded by 423D in respect of security cameras), 421A, 423D, 424 (superseded by 423D in respect of carriage lanterns), LD01, manufacturers specifications for "Titano" and "Chelsom" light fittings and "Armorplate V27" CCTV camera.	5.2.2002	Granted
LSX0204266	Willing House Gray's Inn Road London WC1	Application under Section 73 of the Town and Country Planning Act 1990 to vary conditions 4 (CCTV); 5 (ventilation); and 6 (roof top plant) of listed building consents LSX0004159R5 and LSX0104171 dated 29 October 2001.	16.4.2002	Condition varied

LSX0204268	Willing House Gray's Inn Road London WC1	Application under section 73 of Town and Country Planning Act 1990 to vary conditions 4 (CCTV system), 5 (ventilation) and 6 (roof top plant) of listed building consents LSX0004159/R5 and LSX0104171 dated 29 October 2001.	16.4.2002	Condition varied
LSX0204409	62 Doughty Street London WC1N2LS	Installation of two external CCTV cameras, two internal CCTV cameras, replacement of the entry voice system, clear secondary glazing unit above main entrance door and new door in reception hatch, as shown on drawing numbers: 754/1, 754/2, 754/3, 754/6, 754/7, 754/9 and additional information on WAT-300D image sensors.	17.6.2002	Granted
LWX0202175	Fenton House Windmill Hill London NW3 6RT	Installation of security equipment including lights and CCTV camera. As shown on drawing no(s) 02/03 as amended 15/05/02, 02:05- 02:09, 02:10 as amended 15/05/02, Manufactures specification of lamps, and CCTV illuminator, also detail of plan showing location of ticket machine.	25.6.2002	Granted
LSX0204762	Summit House 11-12 Red Lion Square London WC1	Retrospective application to install CCTV system to the exterior and ground floor interior and associated signage, as shown on drawing numbers: 1157/0/SE, 31555/CTV/00 1157/0/SI, CCTV System Specification document, A4 sheet of Closed Circuit TV signs and 2 x A4 sheet detailing camera type.	8.5.2003	Granted
2003/0756/L	163-203 Eversholt Street London NW1	The installation of two new, and replacement of nine existing security cameras.	22.8.2003	Granted
LEX0300297/L	1-17 & 20-49 Cumberland Terrace London NW1 4HS	Installation of 24 CCTV security cameras on front, side and rear elevations of residential terrace building, and a drainage hole in the flank elevation, adjacent to the entrance for number 36 Cumberland Terrace.	22.8.2003	Granted
2003/0374/L	University Of London International Hall 1 - 10 Brunswick Square London WC1N 1AS	The installation of a CCTV camera and fixing bracket on the corner of Guilford Street and Landsdowne Terrace.	14.1.2004	Granted
2003/2236/L	Cambridge Theatre Earlham Street London WC2H 9HU	Installation of equipment including 3 no. CCTV cameras for a temporary period ( a minimum of 6 months) to enable pyrotechnic effects to Mercer and Earlham Street elevations, providing flame effects to canopy top and roof of high-level tower.	21.1.2004	Refused
2003/3162/L	26 and 26A Argyle Square London WC1H 8AP	Construction of planter, alteration to external door, installation of CCTV camera, installation of pedestrian ramp and installation of a new staircase to the front basement.	11.3.2004	Refused
2004/0394/L	93-97 Gower Street London WC1E 6AA	Internal alterations including installation of new partitions, doors, secondary glazing, and refurbishment of existing bedrooms, kitchens, doors and windows. Installation of external CCTV camera, changes to rainwater pipes and ventilation grilles and repairs to lead covered dormers.	24.3.2004	Granted
2003/1901/L	Congress House 23 - 28 Great Russell Street London WC1B 3LN	Installation of new security cameras, replacement of steel painted stair enclosure with new glass door and glass side panel, extension of roof over stair enclosure, replacement of external downlighters and installation of internally illuminated box sign	5.4.2004	Part Granted / Refused

2004/1157/L	King's Cross Station Euston Road London N1 9AP	Installation of CCTV security cameras and routing.	20.5.2004	Granted
2004/1617/L	The Brunswick Centre London WC1N 1AW	Installation of CCTV cameras to basement, ground and upper ground floor levels of site at various locations.	24.6.2004	Granted
2004/1996/L	26 and 26A Argyle Square London WC1H 8AP	Removal of existing concrete posts, installation of two planter boxes, alteration to external door, installation of CCTV camera on the side of the building, installation of pedestrian ramp and a new staircase to the front basement.	29.6.2004	Granted
2004/1699/L	128 Fortune Green Road London NW6 1DN	The installation of CCTV and alarm sounder box	15.7.2004	Granted
2004/3811/L	3-4 Prince Albert Road London NW1 7SN	Retention of timber attenuator to air-conditioning units and CCTV camera within brick pier.	27.9.2004	Granted
2004/4049/L	The Lido Parliament Hill Fields Hampstead Heath London NW5	Replacement and alteration of signs, seats, litter bins and CCTV cameras.	15.11.2004	Granted
2004/2512/L	Bedford Row Chambers 29 Bedford Row London WC1R 4HE	Internal alterations to part ground floor of existing offices and the retention and alteration of existing security cameras to the front and rear elevations.	25.11.2004	Part Granted / Refused
2004/4365/L	The Heals Building, 196 Tottenham Court Road London W1T 7LG	Installation of 3 x security cameras to the exterior of the building at ground floor level.	13.12.2004	Granted
2005/1239/L	University College School Froggnal London NW3 6XH	Installation of additional security cameras and floodlights on all blocks plus floodlight on pole adjoining rear block, plus installation of automatic vehicle barrier and security cabin at southern entrance gate.	1.7.2005	Granted
2005/1447/L	Bedford Row Chambers 29 Bedford Row London WC1R 4HE	Replacement of four existing unauthorised external security cameras to office building.	15.7.2005	Refused
2005/4393/L	Derby Lodge, Flats 1-36 Britannia Street, & Flats 69-102 Wicklow Street London WC1X 9LE	Works associated with the construction of new entrance areas including new opaque glass glazed screens and clear glass glazed door to 4 communal entrances, door entry panels and installation of CCTV camera at first floor level.	20.12.2005	Granted
2006/0091/L	37A Neal Street London WC2H 9PR	Internal and external alterations involving the installation of an ATM and CCTV camera to the Shorts Gardens elevation of the retail shop (Class A1).	20.3.2006	Granted
2006/0977/L	Kenwood House Hampstead Lane London NW3 7JR	Installation and retention of CCTV security cameras internally to ground and first floors of building (Class D2).	14.6.2006	Granted
2005/3364/L	Old Conduit House 1 Lyndhurst Terrace London NW3 5QA	Various internal and external alterations on all floors, retention of security cameras to front and side and access panel to front gate pier to existing house.	7.8.2006	Granted on Appeal
2006/0220/L	Bedford Row Chambers 29-31 Bedford Row London WC1R 4HE	Internal and external works involving removal of 3x security cameras outside main entrance on Bedford Row and the installation of 3x replacement security cameras (2 on the Bedford Row facade) all to existing office building (Class B1).	26.1.2007	Refused
2007/0807/L	John Adams Hall of Residence 15-23 Endsleigh Street London WC1H 0DP	Works associated with the installation of CCTV cameras to front and rear facades of existing student hall of residence (C2).	13.4.2007	Granted

2007/1910/L	The British Museum Great Russell Street London WC1B 3DG	Installation and renewal of additional CCTV security system.	30.7.2007	Granted
2006/4251/L	54-55 Birkenhead Street London WC1H 8BB	Internal and external alterations/works to the existing mixed use building associated with functions of the charity including installation of new openings, insertion of new doors, removal and erection of stud walls, re-roofing, replacement door to Chad Street, replacement of rainwater and soil pipes, replacement windows, new balance flue, new CCTV cameras and hard landscaping.	23.8.2007	Granted
2007/0775/L	53 & 54 Doughty Street London WC1N 2LS	External alterations in association with the refurbishment of the existing office building (Class B1) incorporating the installation of 2 air conditioning units in rear lightwell; replacement of existing plastic roof of the rear link structure and the insertion of new door and window at rear ground floor level; installation of timber panels to the entrance doors to replace unauthorised glass panels; installation of 2 security cameras on front elevation; and internal alterations.	31.8.2007	Granted
2007/5259/L	54-55 Birkenhead Street London WC1H 8BB	Installation of new letter box and brass sign to Birkenhead Street entrance; new telecom entrance system and relocation of CCTV camera to Chad Street entrance; and retention of timber doors to Chad Street entrance	17.1.2008	Granted
2009/1104/L	School Of Hygiene And Tropical Medicine Keppel Street London WC1E 7HT	Internal and external alterations in association with the installation of ductwork from the toilet blocks on each floor to main supply and return air ducts vertically either side of the courtyard to air handling units on the roof, alterations main entrance external stonework, installation of internal and external CCTV cameras, internal alterations to laboratory, alterations to delivery bay to form replacement window and stone cleaning of entrance architrave	8.6.2009	Granted
2009/1847/L	Levita House 68 Chalton Street London NW1 1JR	Variation of listed building consent Ref: 2008/2440/L, dated 27/08/2008, for erection of a single storey side extension and double height pitched roof as an extension to the existing youth centre (Class D1). Variations include relocation of access ramp to the new side entrance of the extension, change in facing materials for the roof of the extension, introduction of an additional rooflight, location of 10 CCTV cameras around the perimeter of the entire building, relocation of kitchen extract, and alterations to windows and doors on the rear elevation of the approved extension.	21.7.2009	Granted
2009/3963/L	The British Museum Great Russell Street London WC1B 3DG	Installation of additional CCTV cameras within existing security system to Galleries 10, 17, 19-23, 41, 47, 48, 51, 52, 54, 55, 62, 70-73, and 90, 92-94.	13.10.2009	Granted
2009/3967/L	The British Museum Great Russell Street London WC1B 3DG	Installation of additional CCTV cameras within existing security system to Galleries 4, 33, 33A, 46, 69 and 69A.	13.10.2009	Granted
2009/2646/L	1 Wedderburn House Wedderburn Road Hampstead NW3 5QR	Installation of 4 CCTV cameras to cover front, side and rear elevations of grade II listed building.	30.10.2009	Refused
2009/3969/L	The British Museum Great Russell Street London WC1B 3DG	Installation of additional CCTV cameras within existing security system to Galleries 11, 18, 25, 34, 45 and 91.	3.11.2009	Granted

2009/4719/L	Jewish Museum London 129 Albert Street London NW1 7NB	Replacement of existing CCTV camera and alarm sounder and the addition of a new CCTV camera.	2.12.2009	Granted
2009/4939/L	1 Cambridge Gate London NW1 4JX	Internal alterations and works associated with the installation of air conditioning plant in the courtyard at lower ground floor level and one air handling unit on the 5th floor terrace with associated plant enclosure screens, one condenser unit within a front light well, two satellite dishes and two security cameras.	6.1.2010	Granted
2010/1516/L	Sarum Chase 23 West Heath Road London NW3 7UU	Installation of CCTV cameras and security lighting to existing single residential dwelling (Class C3).	13.5.2010	Granted
2010/2063/L	Camden Road Station Camden Road London NW1 9LS	Internal and external alterations including the installation of CCTV cameras; induction loop and information system; new platform lighting; moving fence on platform 2; tactile paving and station poster signage.	16.7.2010	Granted
2010/4414/L	36 John Street London WC1N 2AT	Installation of CCTV cameras to the front and rear elevations of existing high commission (Class B1)	5.10.2010	Granted
2008/5670/L	2 - 5 Birkenhead Street London WC1H 8BA	External alterations including the addition of a rooflight on the rear roofslope of No. 5 and replacement of ground floor windows to the front elevation at No 2. Retention of two CCTV cameras on the front elevation at No 4 and kitchen extract duct to rear elevation at No 3.	24.1.2011	Refused
2010/6560/L	51 Highgate High Street London N6 5LA	Installation of external security camera front elevation at first floor fascia level of Bank (Class A2).	1.2.2011	Granted
2011/0508/L	5 Lincolns Inn Fields London WC2A 3BT	Amendments to listed building consent 2010/4674/L, dated 20/10/2010 (Internal and external alterations in association with erection of single storey roof extension on north (rear) elevation with associated lift access and external roof terrace area to single dwellinghouse (Class C3) comprising internal alterations at ground floor level, relocation of rooflight on rear mansard roofslope, alterations to front entrance step, light fittings, CCTV cameras and associated alterations.	28.3.2011	Granted
2010/6713/L	35 Hawley Crescent London NW1 8NP	Works associated with the Installation of CCTV to first floor south elevation and new electric gate's control unit to side car park entrance. Erection of vertical steel fins on basement level windows to south elevation. Replacement of chicken wire and timber frame over front lightwell with black metal mesh to rear of existing entrance fence to office (Class B1).	5.4.2011	Granted
2011/2672/L	28 Hampstead High Street London NW3 1QB	Alterations involving the removal of external step in front of existing ATMs (Automatic Teller Machine), lowering of existing ATMs within front elevation, alterations to glazing and ATM housing and replacement CCTV cameras to bank premises (Class A2).	12.8.2011	Refused
2011/2565/L	52-57 Cumberland Terrace & 27 Cumberland Mews London NW1 4HJ	Installation of 4 X CCTV security cameras to existing dwellinghouse (Class C3).	31.8.2011	Granted
2011/4731/L	Flat A, 7 The Grove London N6 6JU	Installation of a wall plaque, external CCTV camera and replacement of gate to the front elevation of dwelling (Class C3).	3.10.2011	Granted

2011/2961/L	43 - 45 Bloomsbury Square and 2 Southampton Place London WC1A 2RA	Installation of 3x roof lights to extension at rear, roof mounted plant with associated mansard roof screen, external CCTV cameras, ventilation grilles and associated small plant to basement light wells, proximity card readers, signage and intercoms at entrances.	11.10.2011	Granted
2011/4375/L	50 Bloomsbury Street London WC1B 3QT	Installation of one CCTV camera on front elevation and six internal cameras at ground, first, second and third floor levels to hostel (Sui Generis)	16.11.2011	Granted
2011/2682/L	3 The Grove London N6 6JU	Internal alterations to include installation of steam room and kitchen at lower ground floor level, installation of free-standing bath on plinth and associated bathroom alterations at first floor level with external alterations to include the installation of CCTV cameras at various positions to existing house (Class C3)	22.11.2011	Granted
2011/3967/L	Foundling Court & O'Donnell Court London WC1H 8BH	Upgrading of existing CCTV systems involving installation of 8 CCTV cameras on Foundling Court and 8 x CCTV cameras on O'Donnell Court, 4 CCTV cameras on each block are also to be repositioned and associated internal alterations.	22.11.2011	Granted
2011/4792/L	30 Euston Square Formerly 1-9 Melton Road 196 - 198 Euston Road London NW1 2ED	Installation of CCTV cameras at ground and second floor level on Euston Road elevation, ground and second floor level on Melton Road elevation, to west and north elevations on Stephenson Way; external lighting at first floor level to Euston Road and Melton Road elevations and lights above Melton Road and Euston Road main entrances and by study entrance; installation of intercoms to Euston and Melton Road entrances; all in connection with use as headquarters of Royal College of General Practitioners (Sui Generis).	22.12.2011	Granted
2011/4630/L	281 Kentish Town Road London NW5 2JS	Alterations to front facade involving 2 replacement CCTV cameras, 2 projecting signs with associated 2 light fittings and 1 security alarm box to retail shop	12.1.2012	Refused
2011/6465/L	Kings Cross Central Development C Great Northern Hotel York Way London N1	Alterations to the internal elevational treatment of the ground floor arcade (new brick and stucco finish), installation of canopies at ground floor level, installation of CCTV cameras at ground floor level, installation of external lighting scheme, window boxes to bar area, external lightning tapes to all elevations, and satellite dish at roof level, replacement of high level metal sign on south-east elevation with timber sign, installation of high level signs to north-west and south-west, all high level signs including existing timber sign on north-east elevation to be externally illuminated and display of signs at ground floor level in arcade all in connection with existing hotel (Class C1).	5.4.2012	Granted
2012/1905/L	281 Kentish Town Road London NW5 2JS	Installation of 1 projecting sign with associated external illumination and 2 CCTV cameras at fascia level.	29.5.2012	Granted
2012/1940/L	German Gymnasium 26 Pancras Road London NW1 2TB	Installation of digital display at first floor level and nine CCTV cameras for a temporary period from 11th July to 20th September 2012 in connection with the 2012 Olympic Games and Paralympic Games.	4.7.2012	Granted
2012/4386/L	19 Bedford Square London WC1B 3HH	Internal alterations in connection with the installation of x8 wall mounted and x1 ceiling mounted CCTV cameras from lower ground floor level to third floor level.	12.10.2012	Granted

2012/5226/L	Victoria House Southampton Row London WC1B 4DA	Installation of 4 CCTV cameras, one each to the 4 corner side elevations above ground floor level.	11.12.2012	Refused
2013/6522/L	Lincolns Inn Lincolns Inn Fields London WC2A 3TL	Alterations in connection with the replacement of existing CCTV cameras and installation of additional cameras mounted to multiple building exteriors and interiors.	2.5.2014	Granted
2014/6690/L	British Museum Great Russell Street London WC1B 3DG	Installation of CCTV in gallery and associated areas.	12.12.2014	Granted
2014/7309/L	18 Bedford Square London WC1B 3JA	Installation of CCTV, intruder alarm beneath the front crossover and condenser unit at basement level.	25.2.2015	Granted
2015/1326/L	50 Bloomsbury Street London WC1B 3QT	Installation of 1 x CCTV camera to front elevation at ground floor level and 6 x internally located cameras at ground, first, second and third floor levels.	21.4.2015	Granted
2015/1384/L	41 Highgate West Hill London N6 6LS	Proposals to install security cameras to the exterior of the main house and adjoining Orangery affecting a Grade II* Listed Building.	19.5.2015	Granted
2015/1192/L	Africa House 70 Kingsway London WC2B 6AH	Installation of CCTV cameras, intercom system, new signage to rear entrance, replacement signage to front entrance; and replacement louvre at ground floor Twyford Place Facade.	29.5.2015	Granted
2015/1469/L	Waterlow Park Swain's Lane London N6 6PL	External works to introduce security measures including an intruder alarm box to the north elevation, CCTV camera to east elevation and replacement light fittings and security grilles on windows.	18.7.15	Granted
2015/0577/L	Stables Market (Camden) Ltd Chalk Farm Road London NW1 8AH	New distribution of mechanical and electrical services in the Provender Store comprising removal of unsuitable cabling and pipes attached to elevations of buildings, relocation of essential services and the replacement of required external fittings including CCTV cameras, high level luminaires and emergency lighting affecting the exterior of a Grade II Listed Building.	31.7.2015	Granted
2015/5826/L	The Stables Market Chalk Farm Road London NW1 8AH	Works to Cuban Building including installation of mechanical and electrical services, refurbishment of roof, replacement of public toilets and installation of 4x CCTV units to east and west elevations.	6.11.2015	Granted
2015/3237/L	British Museum Great Russell Street London WC1B 3DG	Provision of new vehicle barriers, CCTV & lighting to the north east and south west entrances.	23.11.2015	Granted
2015/7057/L	100 Chalton Street London NW1 1ES	Installation of an Automated Teller Machine (ATM) with illuminated surround and CCTV camera above all to Chalton Street elevation. [retrospective]	3.2.2016	Granted
2016/1500/L	15 Prince Albert Road London NW1 7SR	Installation of three security cameras, i) on the on inside face of front wall, ii) on the inside face of canal wall iii) on rear elevation	3.6.2016	Granted



2016/0307/L	28 Chester Terrace London NW1 4ND	External and internal alterations including replacement of existing roof structure, creation of roof terrace, installation of 2 no. floor mounted air conditioning units, timber louvre screen, glass enclosure and lift over run on the roof, new clay chimney pots, lowering of lower ground vault floor under the pavement with new openings to create additional non-habitable storage space, installation of timber glazed screen and door under the front entrance steps within front lighwell, replacement of timber sash single pane windows with timber sash double glazed windows at ground, first and second floors on the rear elevation, replacement of CCTV cameras and replacement lighting on the front and rear elevations, internal alterations including replacement and reconfiguration of walls and partitions, replacement of staircase from second to third floor level and extension from third floor to roof level. replacement of doors, cornices, and flooring to all floors of the existing single family dwelling.	23.8.2016	Granted
-------------	--------------------------------------	---	-----------	---------

Source: LB Camden Website

The above decisions analysis has been carried out in order to assess how LB Camden applies their general policies in practice to CCTV security cameras. It should not be used for any other purpose. Whilst every effort has been made to ensure its accuracy, no liability is accepted for any errors or omissions. Due to the vagaries of the Council website's keyword search facility and data input, it cannot be guaranteed that every decision has been captured by the search. Withdrawn applications have been omitted. The reasons for refusal for wider schemes may not relate to the CCTV cameras and the Decision Notices and officers' reports should be inspected.