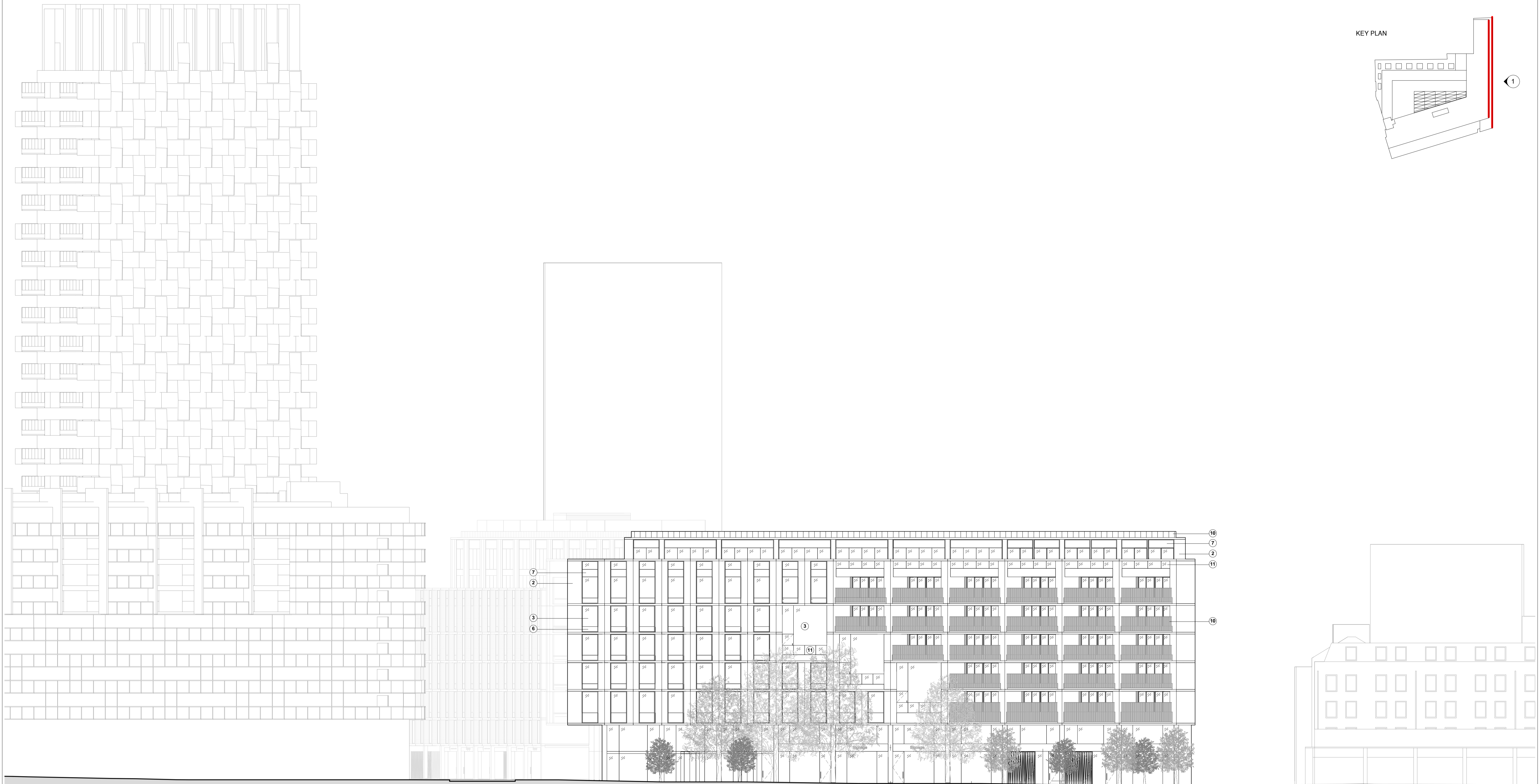
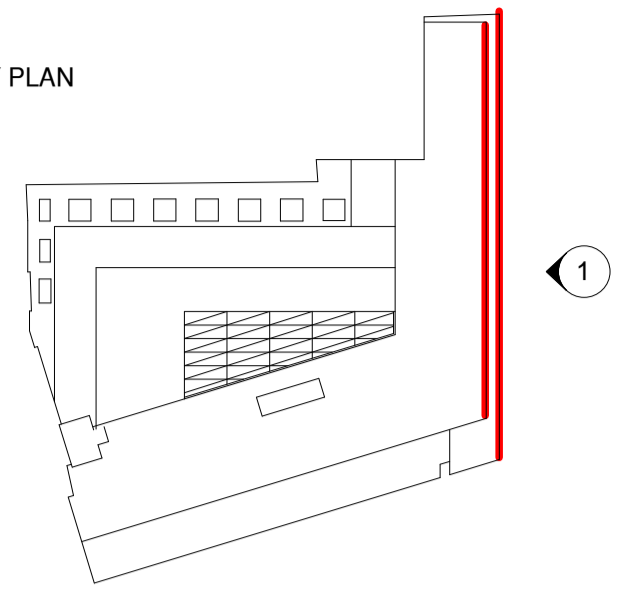


KEY PLAN



DRUMMOND STREET

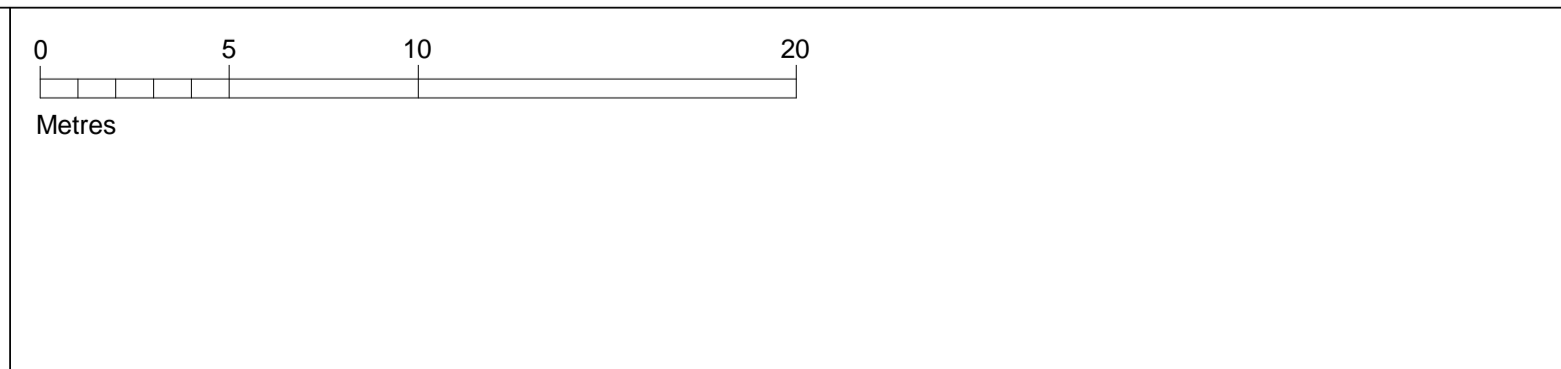
WILLIAM ROAD

NOTES FOR ALL DRAWINGS:

This drawing is to be read in conjunction with the contract documents, including but not limited to all other drawings, specifications and schedules. This drawing shows the design intent only. This is not a fabrication drawing. Do not scale from this drawing. All setting out dimensions shown are to be checked and verified by the contractor on site. All dimensions and levels are subject to a site survey. Any discrepancies found in this drawing are to be reported to the Architect immediately. Any modifications to these drawings necessary to meet the performance criteria of the specification shall be agreed in writing with the Architect and issued for approval. Please refer to structural engineer's drawings, specifications and schedules for all structural design, sizes and performance criteria. © Marks Barfield Architects 2017

Rev	Date	by	Description

Key	Description
1	Pre-fabricated brick panel
2	Pre-fabricated masonry panel
3	Low iron glazing in bronze anodised aluminium frame
4	Glazed feature 'lantern'
5	Low iron frameless atrium glazing
6	Ventilated spandrel panel
7	Spandrel panel
8	Bronze anodised aluminium
9	Bespoke metal gate and louvres
10	Bespoke PPC metal balustrade
11	Glazed balustrade
12	Metal Plant Screen

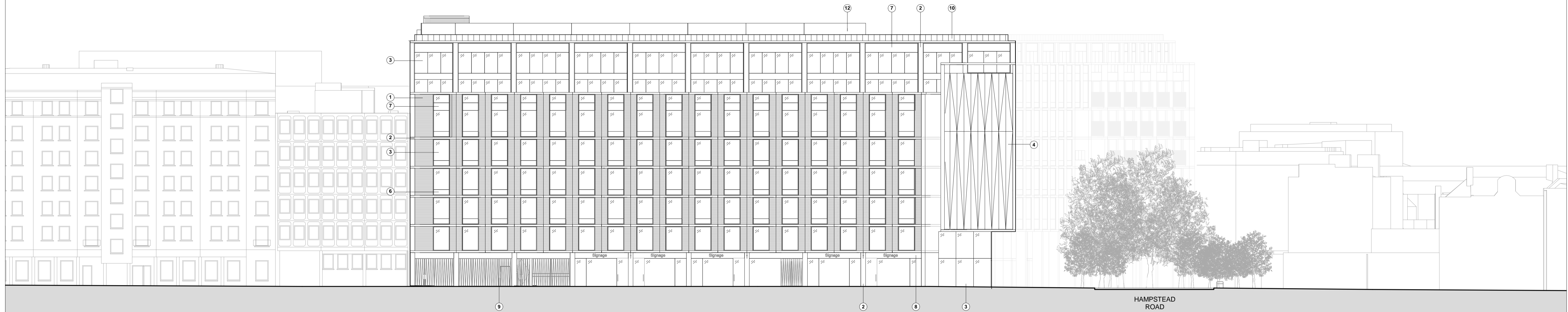
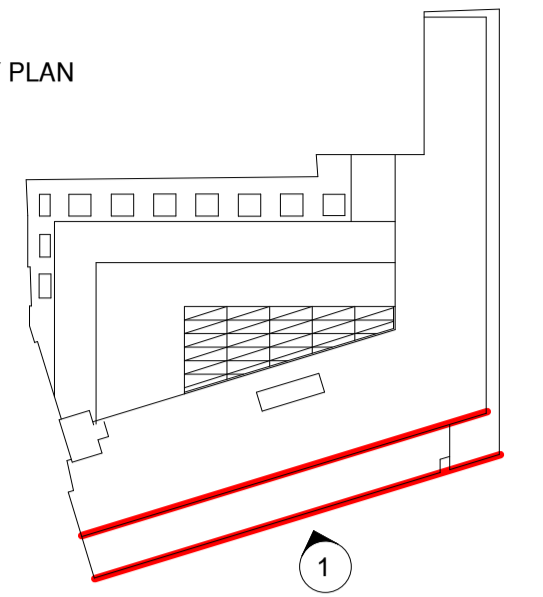


Client
Lazari Investments Limited
 Greater London House
 Hampstead Road
 London NW1 7QX
 United Kingdom
 Tel +44 20 7388 5444
 Fax +44 20 7388 6557

Architect
marks barfield architects
 50 Bromells Road
 London SW4 0BG
 United Kingdom
 Tel +44 20 7501 0180
 Fax +44 20 7498 7103

Stephenson House				
Drawing Title Proposed East Elevation (Hampstead Road)				
Job no 601	Scale (@ A1) 1 : 200	Drawing No A-0300-PL	Revision	Status Planning
Date 02/06/17	Checked YB			

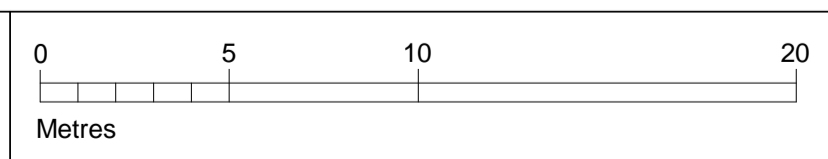
KEY PLAN



NOTES FOR ALL DRAWINGS:
This drawing is to be read in conjunction with the contract documents, including but not limited to all other drawings, specifications and schedules. This drawing shows the design intent only. This is not a fabrication drawing. Do not scale from this drawing. All setting out dimensions shown are to be checked and verified by the contractor on site. All dimensions and levels are subject to a site survey. Any discrepancies found in this drawing are to be reported to the Architect immediately. Any modifications to these drawings necessary to meet the performance criteria of the specification shall be agreed in writing with the Architect and issued for approval. Please refer to structural engineer's drawings, specifications and schedules for all structural design, sizes and performance criteria. © Marks Barfield Architects 2017

Rev	Date	by	Description

Key	Description
1	Pre-fabricated brick panel
2	Pre-fabricated masonry panel
3	Low iron glazing in bronze anodised aluminium frame
4	Glazed feature 'lantern'
5	Low iron frameless atrium glazing
6	Ventilated spandrel panel
7	Spandrel panel
8	Bronze anodised aluminium
9	Bespoke metal gate and louvres
10	Bespoke PPC metal balustrade
11	Glazed balustrade
12	Metal Plant Screen



Client
Lazari Investments Limited

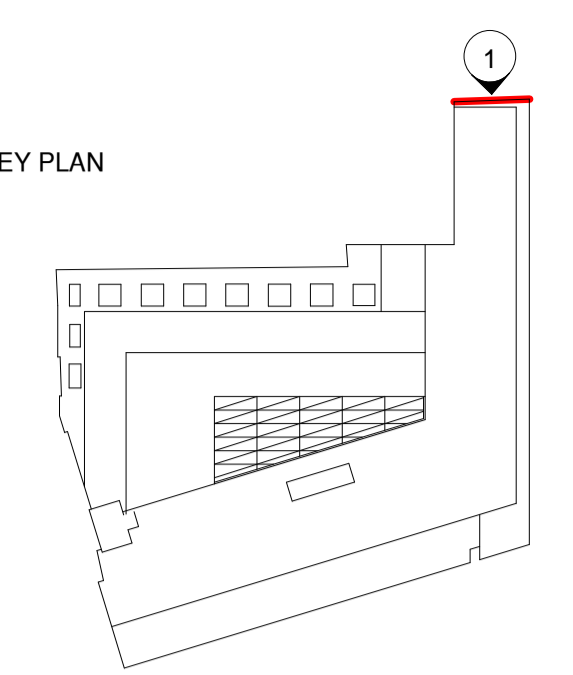
Greater London House
Hampstead Road
London NW1 7QX
United Kingdom
Tel +44 20 7388 5444
Fax +44 20 7388 6557

Architect
marks barfield architects

50 Bromells Road
London SW4 0BG
United Kingdom
Tel +44 20 7501 0180
Fax +44 20 7498 7103

Stephenson House				
Drawing Title Proposed South Elevation (Drummond Street)				
Job no 601	Scale (@ A1) 1 : 200	Drawing No A-0301-PL	Revision	Status Planning
Date 02/06/17	Checked YB			

KEY PLAN



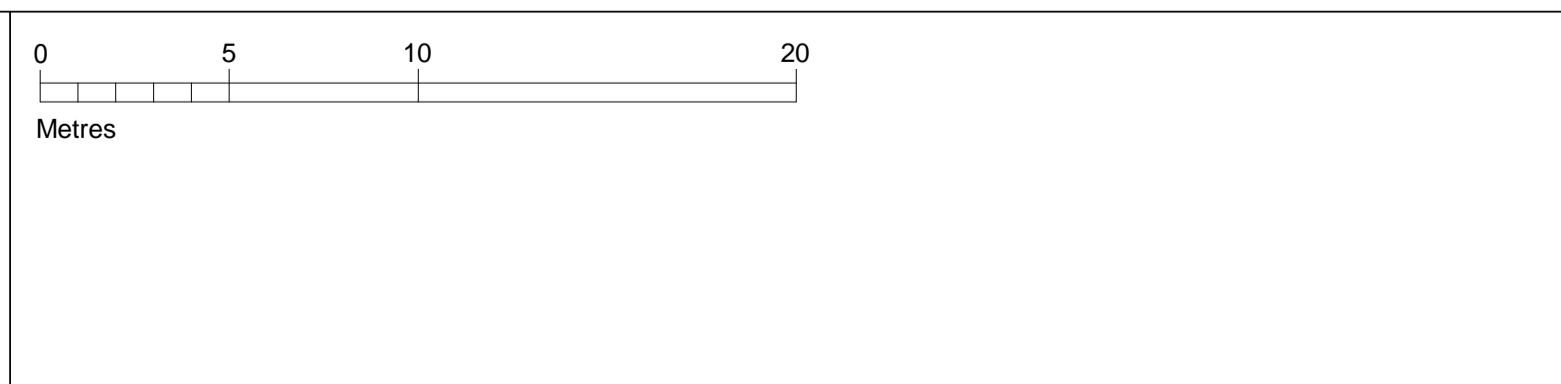
HAMPSTEAD ROAD

NOTES FOR ALL DRAWINGS:

This drawing is to be read in conjunction with the contract documents, including but not limited to all other drawings, specifications and schedules. This drawing shows the design intent only. This is not a fabrication drawing. Do not scale from this drawing. All setting out dimensions shown are to be checked and verified by the contractor on site. All dimensions and levels are subject to a site survey. Any discrepancies found in this drawing are to be reported to the Architect immediately. Any modifications to these drawings necessary to meet the performance criteria of the specification shall be agreed in writing with the Architect and issued for approval. Please refer to structural engineer's drawings, specifications and schedules for all structural design, sizes and performance criteria © Marks Barfield Architects 2017

Rev	Date	by	Description

Key	Description
1	Pre-fabricated brick panel
2	Pre-fabricated masonry panel
3	Low iron glazing in bronze anodised aluminium frame
4	Glazed feature 'lantern'
5	Low iron frameless atrium glazing
6	Ventilated spandrel panel
7	Spandrel panel
8	Bronze anodised aluminium
9	Bespoke metal gate and louvres
10	Bespoke PPC metal balustrade
11	Glazed balustrade
12	Metal Plant Screen

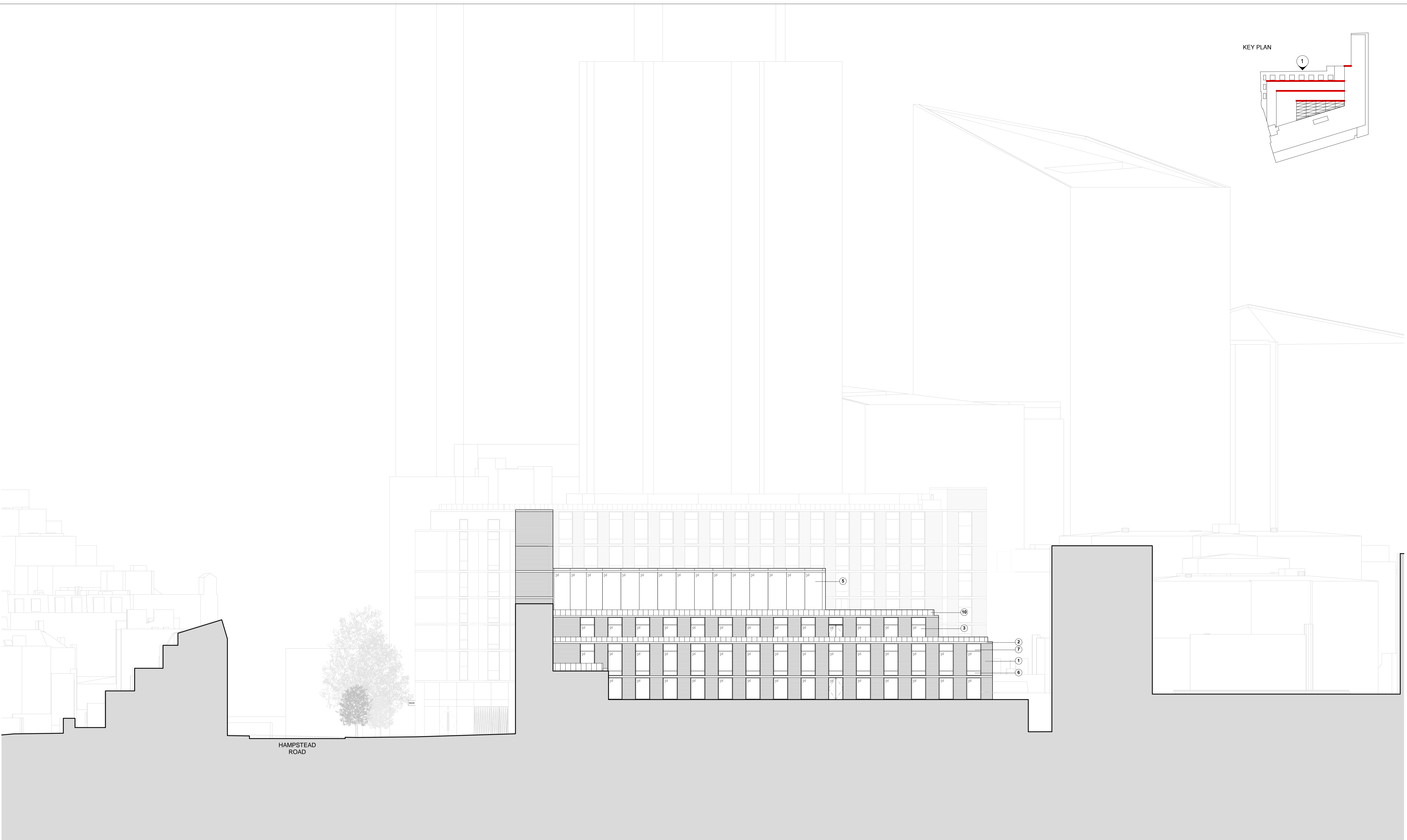
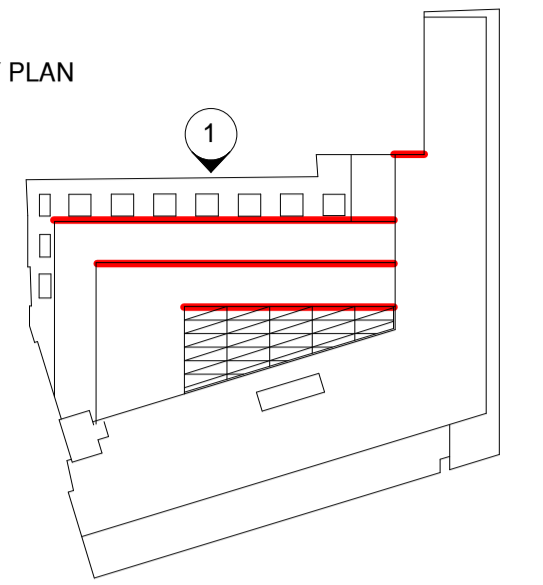


Client
Lazari Investments Limited
 Greater London House
 Hampstead Road
 London NW1 7QX
 United Kingdom
 Tel +44 20 7388 5444
 Fax +44 20 7388 6557

Architect
marks barfield architects
 50 Bromells Road
 London SW4 0BG
 United Kingdom
 Tel +44 20 7501 0180
 Fax +44 20 7498 7103

Stephenson House				
Drawing Title Proposed North Elevation (William Road)				
Job no 601	Scale (@ A1) 1 : 200	Drawing No A-0302-PL	Revision	Status Planning
Date 05/06/17	Checked YB			

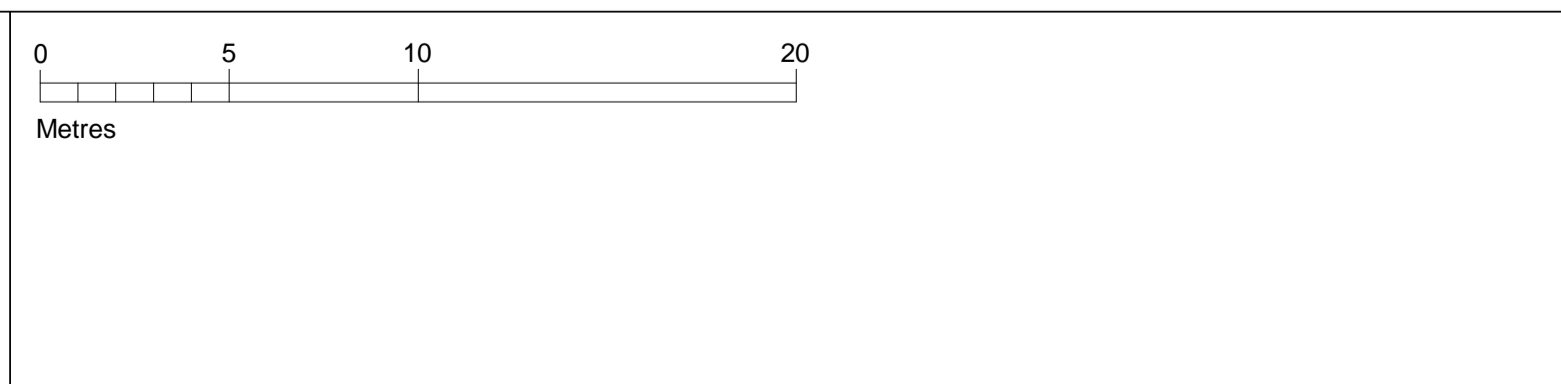
KEY PLAN



NOTES FOR ALL DRAWINGS:
This drawing is to be read in conjunction with the contract documents, including but not limited to all other drawings, specifications and schedules. This drawing shows the design intent only. This is not a fabrication drawing. Do not scale from this drawing. All setting out dimensions shown are to be checked and verified by the contractor on site. All dimensions and levels are subject to a site survey. Any discrepancies found in this drawing are to be reported to the Architect immediately. Any modifications to these drawings necessary to meet the performance criteria of the specification shall be agreed in writing with the Architect and issued for approval. Please refer to structural engineer's drawings, specifications and schedules for all structural design, sizes and performance criteria © Marks Barfield Architects 2017

Rev	Date	by	Description

Key	Description
1	Pre-fabricated brick panel
2	Pre-fabricated masonry panel
3	Low iron glazing in bronze anodised aluminium frame
4	Glazed feature 'lantern'
5	Low iron frameless atrium glazing
6	Ventilated spandrel panel
7	Spandrel panel
8	Bronze anodised aluminium
9	Bespoke metal gate and louvres
10	Bespoke PPC metal balustrade
11	Glazed balustrade
12	Metal Plant Screen



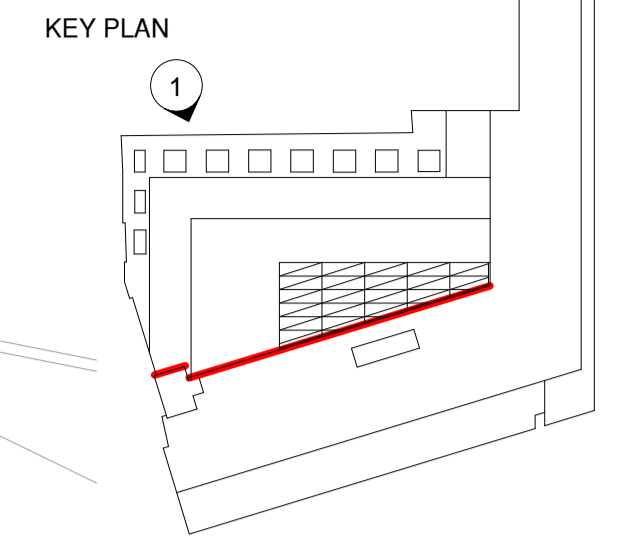
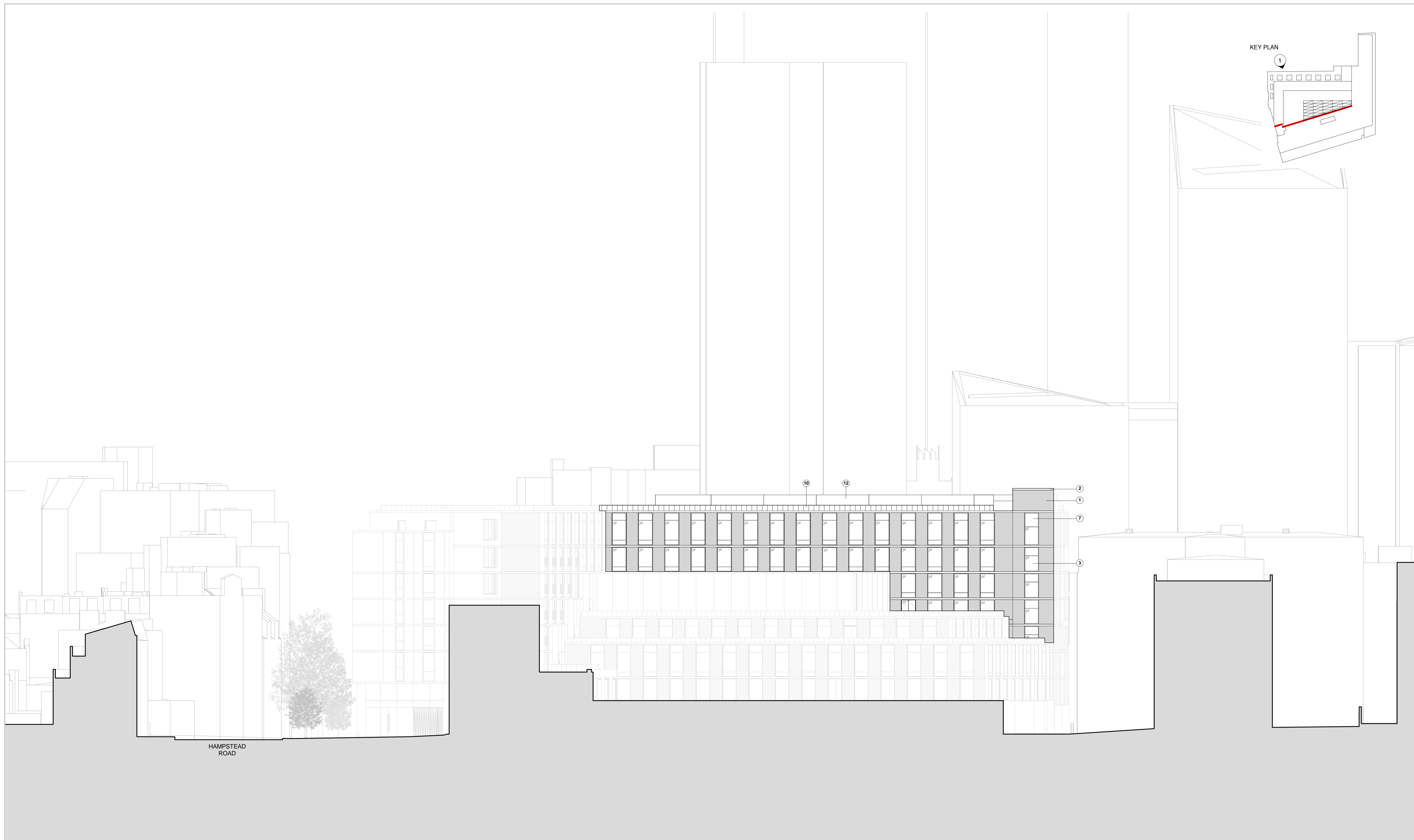
Client
Lazari Investments Limited

Greater London House
Hampstead Road
London NW1 7QX
United Kingdom
Tel +44 20 7388 5444
Fax +44 20 7388 6557

Architect
marks barfield architects

50 Bromells Road
London SW4 0BG
United Kingdom
Tel +44 20 7501 0180
Fax +44 20 7498 7103

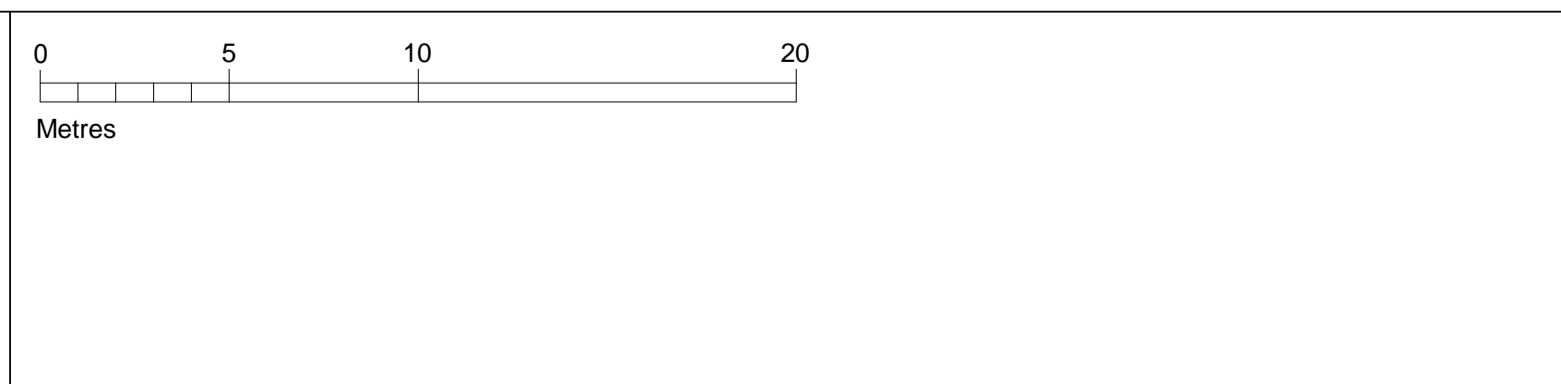
Stephenson House				
Drawing Title Proposed North Elevation 1				
Job no 601	Scale (@ A1) 1 : 200	Drawing No A-0303-PL	Revision	Status Planning
Date 02/06/17	Checked YB			



NOTES FOR ALL DRAWINGS:
 This drawing is to be read in conjunction with the contract documents, including but not limited to all other drawings, specifications and schedules. This drawing shows the design intent only. This is not a fabrication drawing. Do not scale from this drawing. All setting out dimensions shown are to be checked and verified by the contractor on site. All dimensions and levels are subject to a site survey. Any discrepancies found in this drawing are to be reported to the Architect immediately. Any modifications to these drawings necessary to meet the performance criteria of the specification shall be agreed in writing with the Architect and issued for approval. Please refer to structural engineer's drawings, specifications and schedules for all structural design, sizes and performance criteria © Marks Barfield Architects 2017

Rev	Date	by	Description

- Key**
- 1 - Pre-fabricated brick panel
 - 2 - Pre-fabricated masonry panel
 - 3 - Low iron glazing in bronze anodised aluminium frame
 - 4 - Glazed feature 'lantern'
 - 5 - Low iron frameless atrium glazing
 - 6 - Ventilated spandrel panel
 - 7 - Spandrel panel
 - 8 - Bronze anodised aluminium
 - 9 - Bespoke metal gate and louvres
 - 10 - Bespoke PPC metal balustrade
 - 11 - Glazed balustrade
 - 12 - Metal Plant Screen

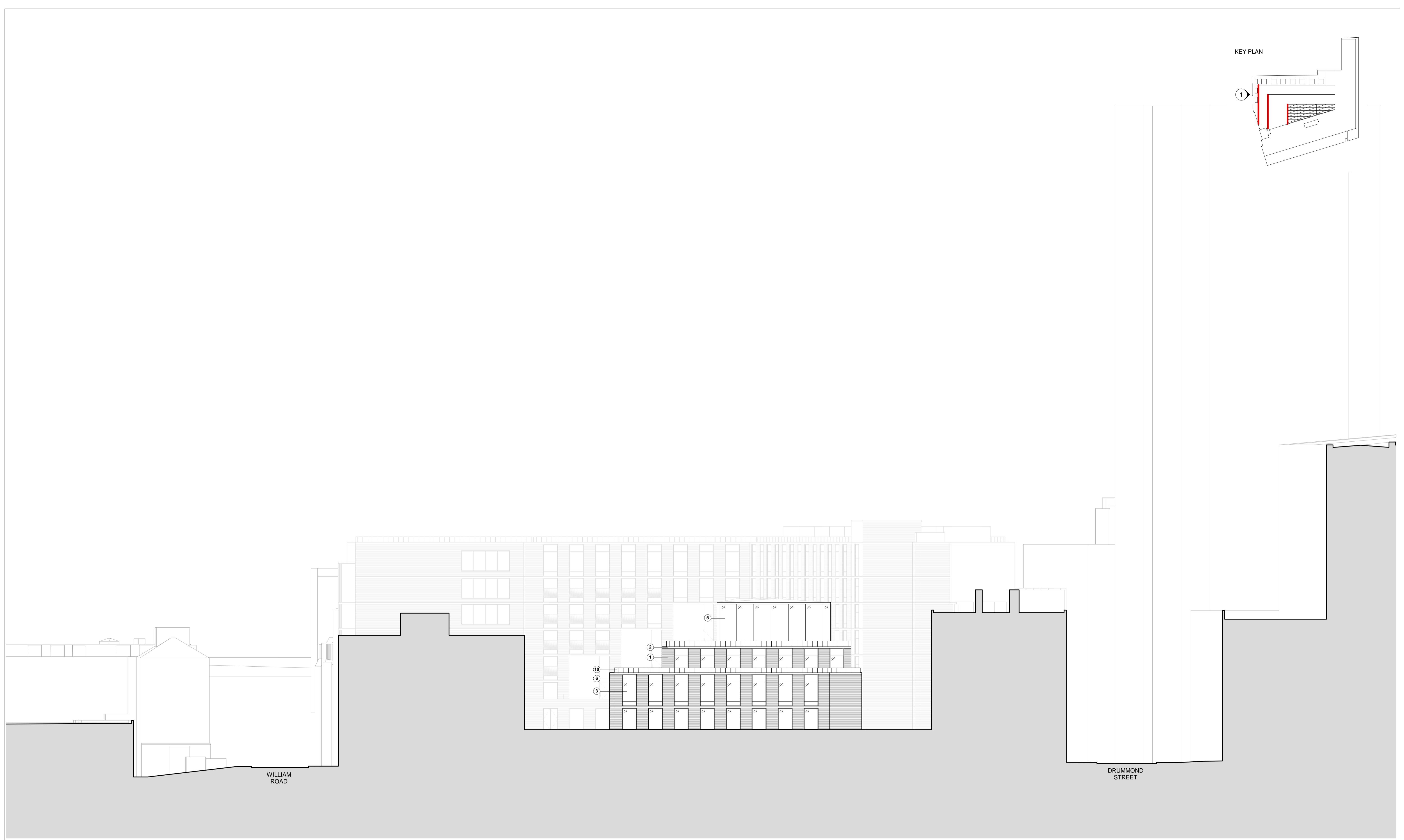
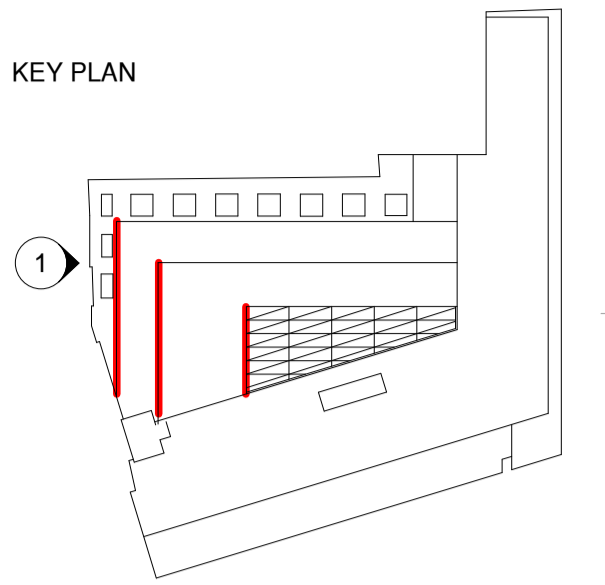


Client
 Lazari Investments Limited
 Greater London House
 Hampstead Road
 London NW1 7QX
 United Kingdom
 Tel +44 20 7388 5444
 Fax +44 20 7388 6557

Architect
 marks barfield architects
 50 Bromells Road
 London SW4 0BG
 United Kingdom
 Tel +44 20 7501 0180
 Fax +44 20 7498 7103

Stephenson House				
Drawing Title Proposed North Elevation 2				
Job no 601	Scale (@ A1) 1 : 200	Drawing No A-0304-PL	Revision	Status Planning
Date 08/06/17	Checked YB			

KEY PLAN



WILLIAM ROAD

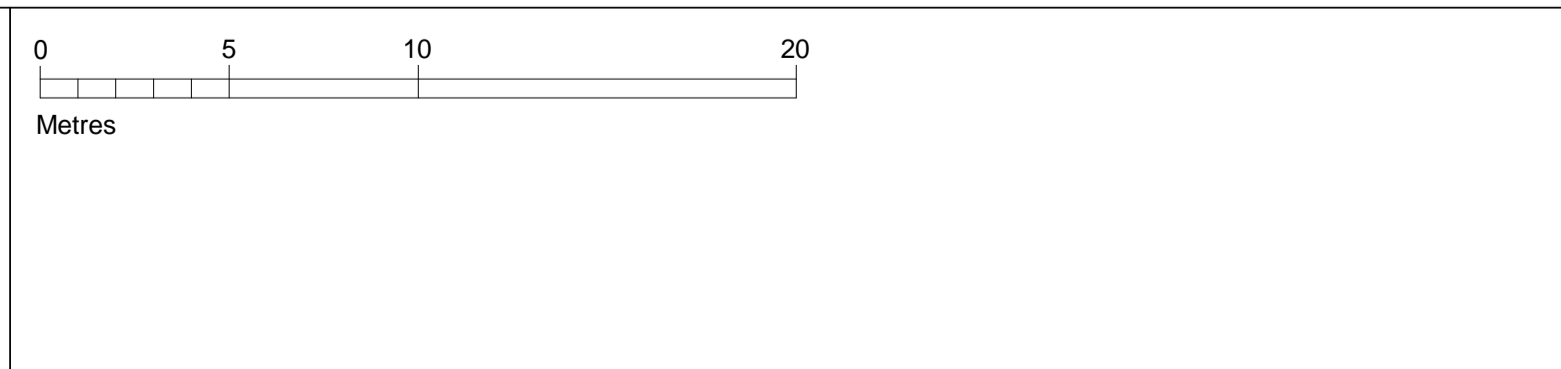
DRUMMOND STREET

NOTES FOR ALL DRAWINGS:

This drawing is to be read in conjunction with the contract documents, including but not limited to all other drawings, specifications and schedules. This drawing shows the design intent only. This is not a fabrication drawing. Do not scale from this drawing. All setting out dimensions shown are to be checked and verified by the contractor on site. All dimensions and levels are subject to a site survey. Any discrepancies found in this drawing are to be reported to the Architect immediately. Any modifications to these drawings necessary to meet the performance criteria of the specification shall be agreed in writing with the Architect and issued for approval. Please refer to structural engineer's drawings, specifications and schedules for all structural design, sizes and performance criteria © Marks Barfield Architects 2017

Rev	Date	by	Description

Key	Description
1	Pre-fabricated brick panel
2	Pre-fabricated masonry panel
3	Low iron glazing in bronze anodised aluminium frame
4	Glazed feature 'lantern'
5	Low iron frameless atrium glazing
6	Ventilated spandrel panel
7	Spandrel panel
8	Bronze anodised aluminium
9	Bespoke metal gate and louvres
10	Bespoke PPC metal balustrade
11	Glazed balustrade
12	Metal Plant Screen

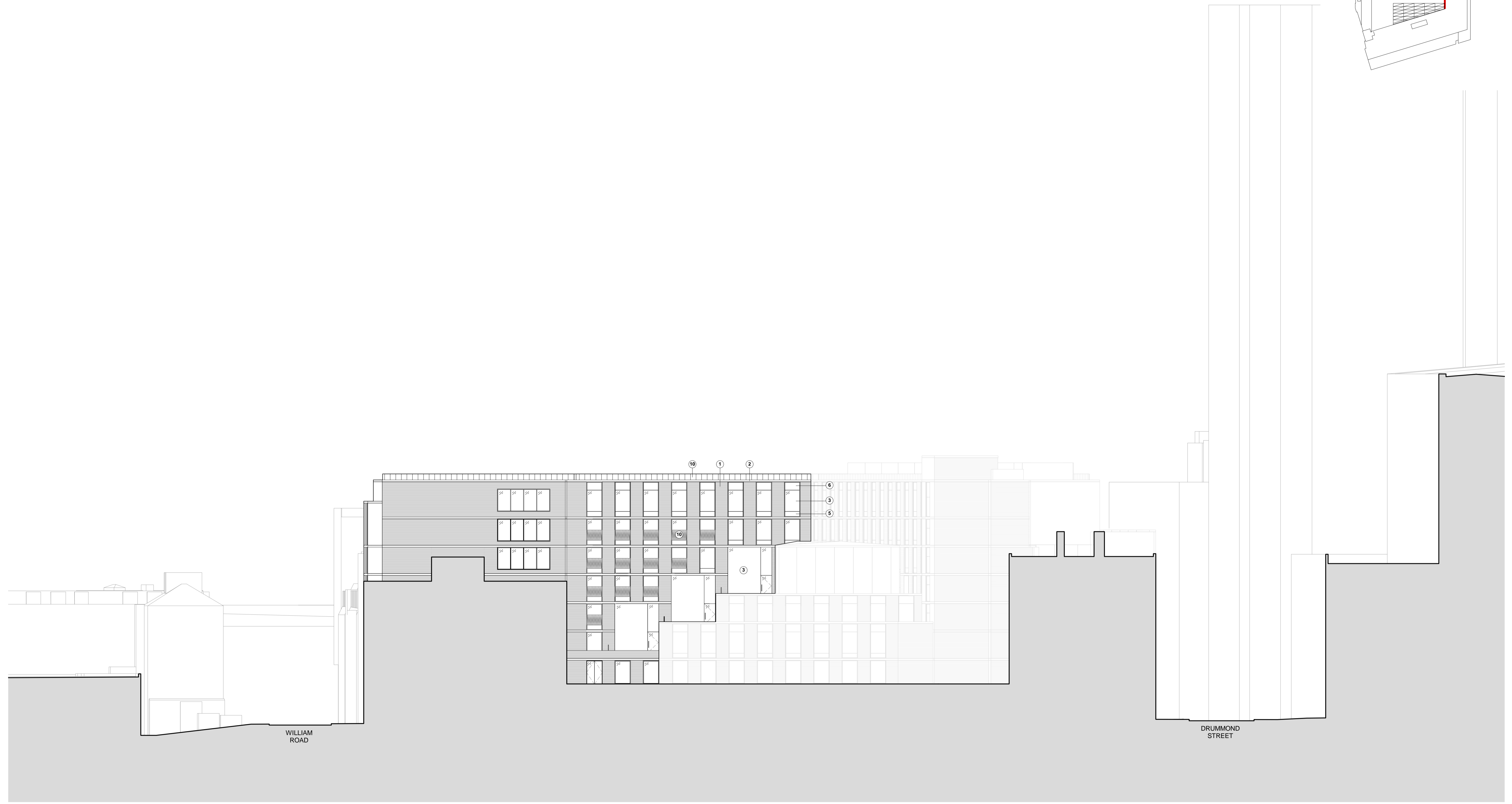
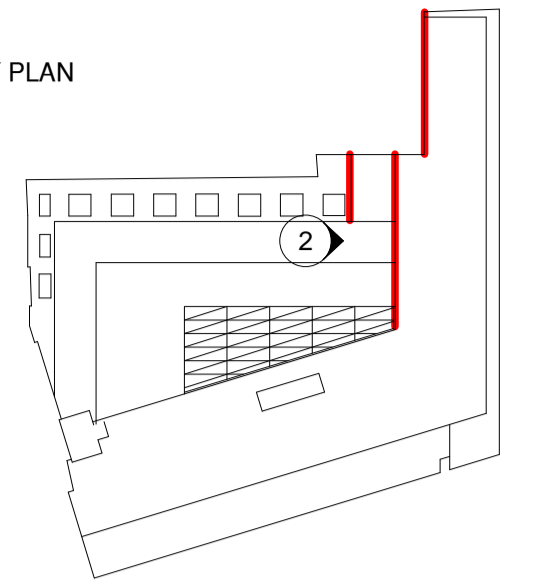


Client
Lazari Investments Limited
 Greater London House
 Hampstead Road
 London NW1 7QX
 United Kingdom
 Tel +44 20 7388 5444
 Fax +44 20 7388 6557

Architect
marks barfield architects
 50 Bromells Road
 London SW4 0BG
 United Kingdom
 Tel +44 20 7501 0180
 Fax +44 20 7498 7103

Stephenson House				
Drawing Title Proposed West Elevation 1				
Job no 601	Scale (@ A1) 1 : 200	Drawing No A-0305-PL	Revision	Status Planning
Date 02/06/17	Checked YB			

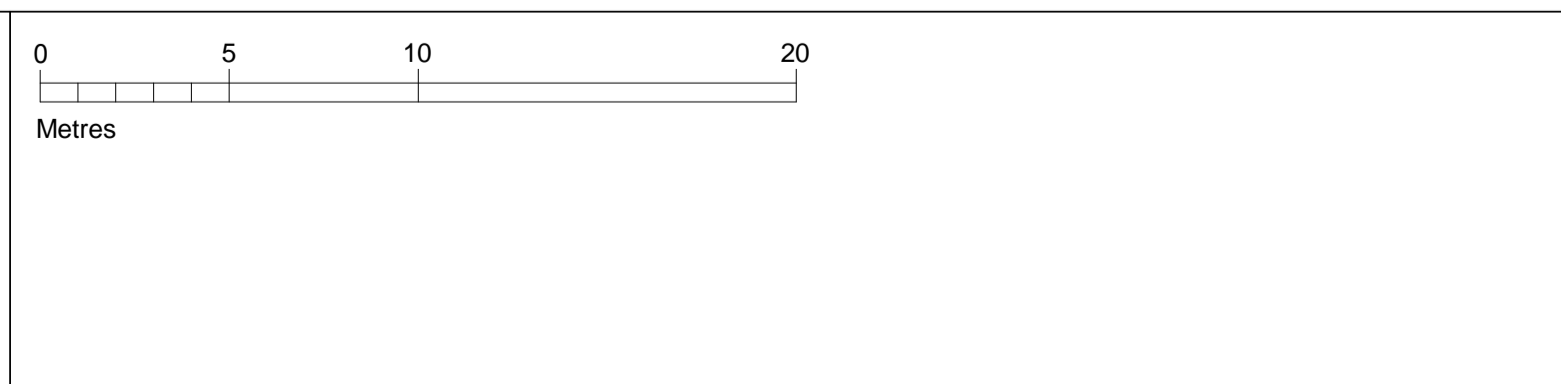
KEY PLAN



NOTES FOR ALL DRAWINGS:
 This drawing is to be read in conjunction with the contract documents, including but not limited to all other drawings, specifications and schedules. This drawing shows the design intent only. This is not a fabrication drawing. Do not scale from this drawing. All setting out dimensions shown are to be checked and verified by the contractor on site. All dimensions and levels are subject to a site survey. Any discrepancies found in this drawing are to be reported to the Architect immediately. Any modifications to these drawings necessary to meet the performance criteria of the specification shall be agreed in writing with the Architect and issued for approval. Please refer to structural engineer's drawings, specifications and schedules for all structural design, sizes and performance criteria. © Marks Barfield Architects 2017

Rev	Date	by	Description

Key	Description
1	Pre-fabricated brick panel
2	Pre-fabricated masonry panel
3	Low iron glazing in bronze anodised aluminium frame
4	Glazed feature 'lantern'
5	Low iron frameless atrium glazing
6	Ventilated spandrel panel
7	Spandrel panel
8	Bronze anodised aluminium
9	Bespoke metal gate and louvres
10	Bespoke PPC metal balustrade
11	Glazed balustrade
12	Metal Plant Screen



Client
Lazari Investments Limited
 Greater London House
 Hampstead Road
 London NW1 7QX
 United Kingdom
 Tel +44 20 7388 5444
 Fax +44 20 7388 6557

Architect
marks barfield architects
 50 Bromells Road
 London SW4 0BG
 United Kingdom
 Tel +44 20 7501 0180
 Fax +44 20 7498 7103

Stephenson House				
Drawing Title Proposed West Elevation 2				
Job no 601	Scale (@ A1) 1 : 200	Drawing No A-0306-PL	Revision	Status Planning
Date 08/06/17	Checked YB			