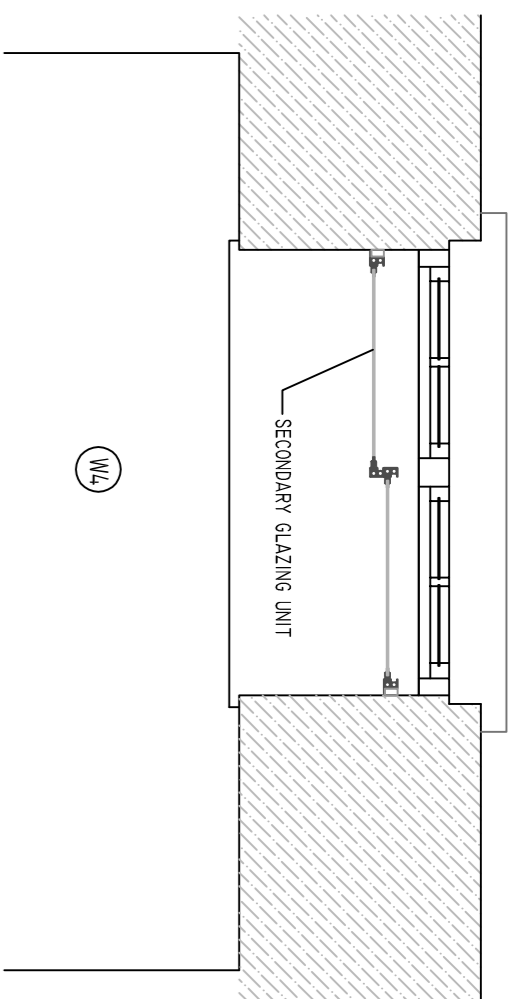
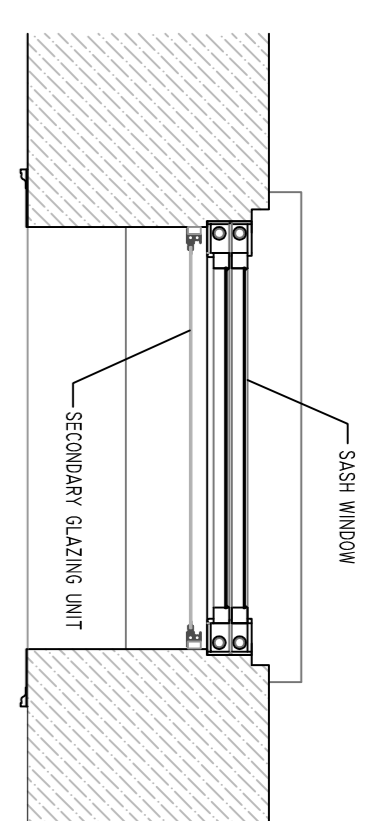
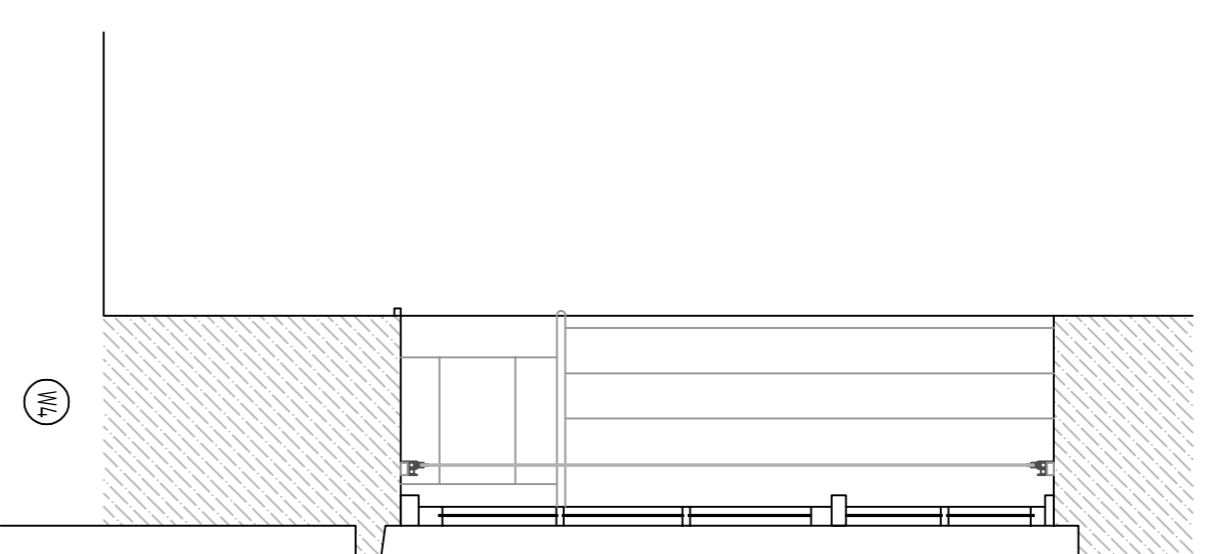
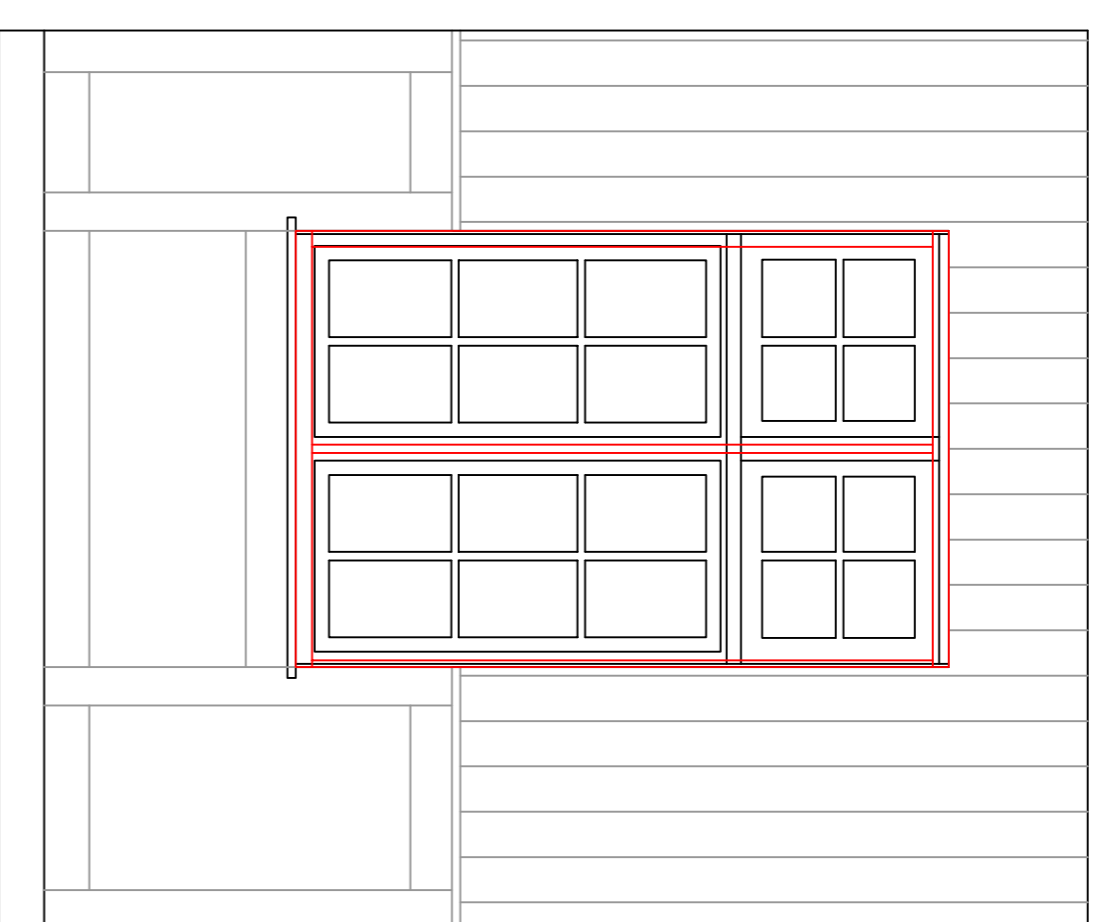




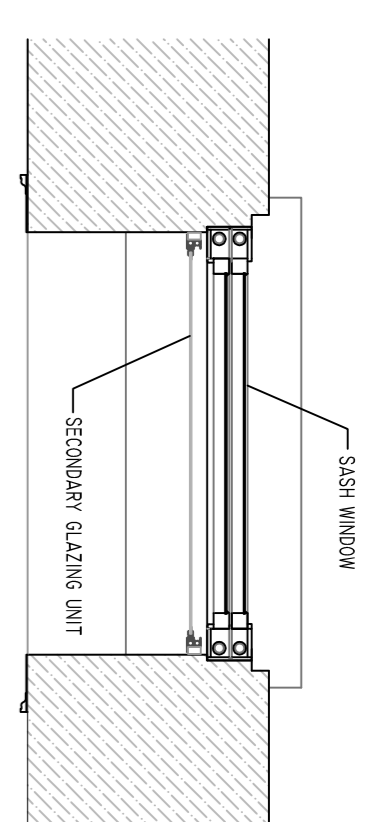
The Honourable  
Society of Gray's Inn  
8 South Square,  
London,  
WC1R 5ET  
Telephone:  
020 7458 7800



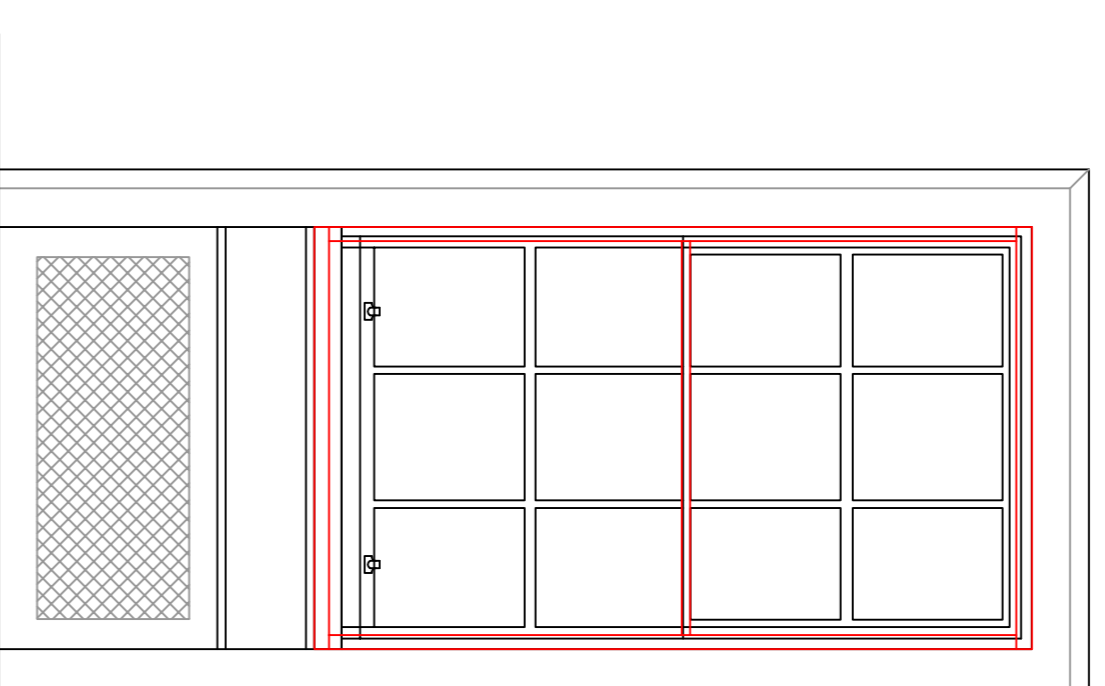
SECONDARY GLAZING UNITS TO BE SUPPLIED AND FITTED BY SELECTALAZE - SERIES 10 SLIMLINE HORIZONTAL SLIDER UNITS FINISHED IN WHITE



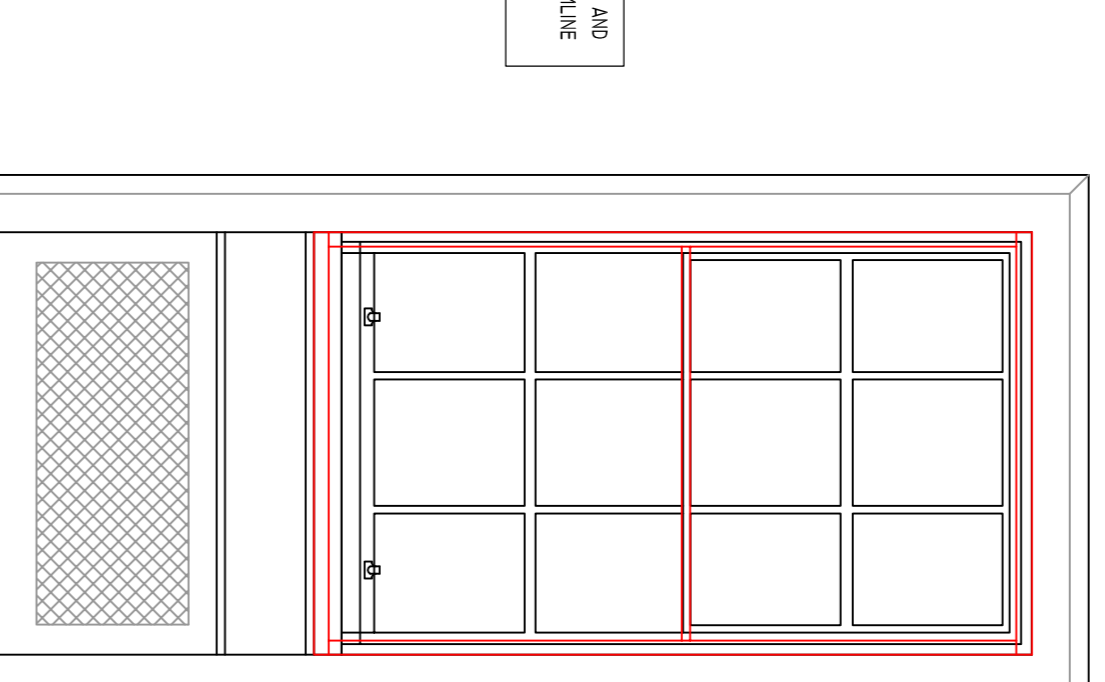
(M3)



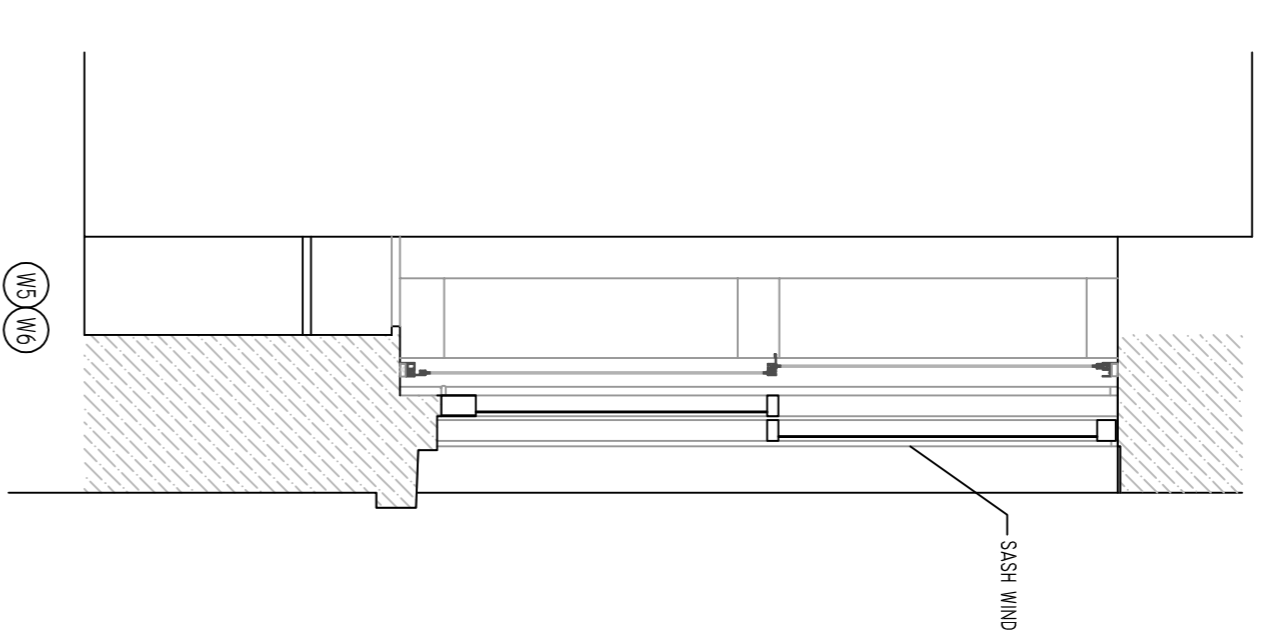
(M4)



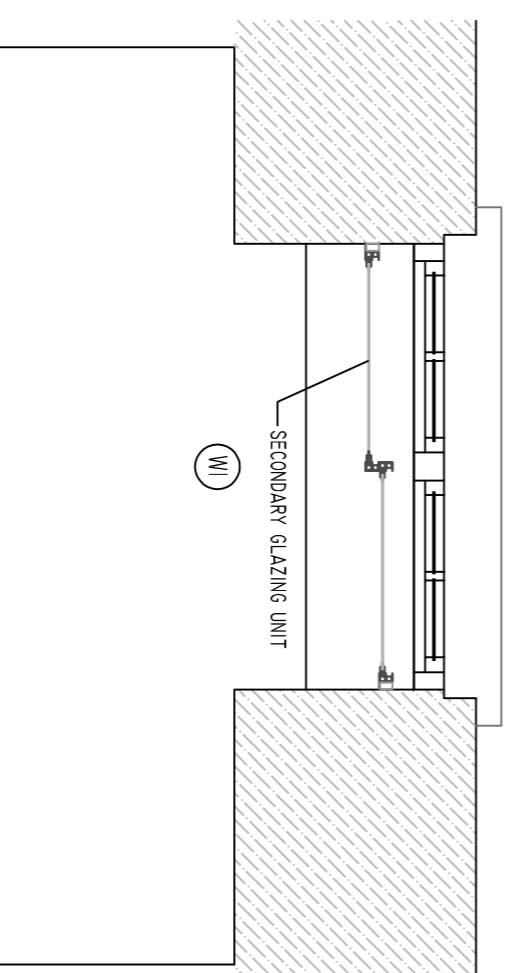
SECONDARY GLAZING UNITS TO BE SUPPLIED AND FITTED BY SELECTALAZE - SERIES 20 SLIMLINE UNITS FINISHED IN WHITE



(M6)

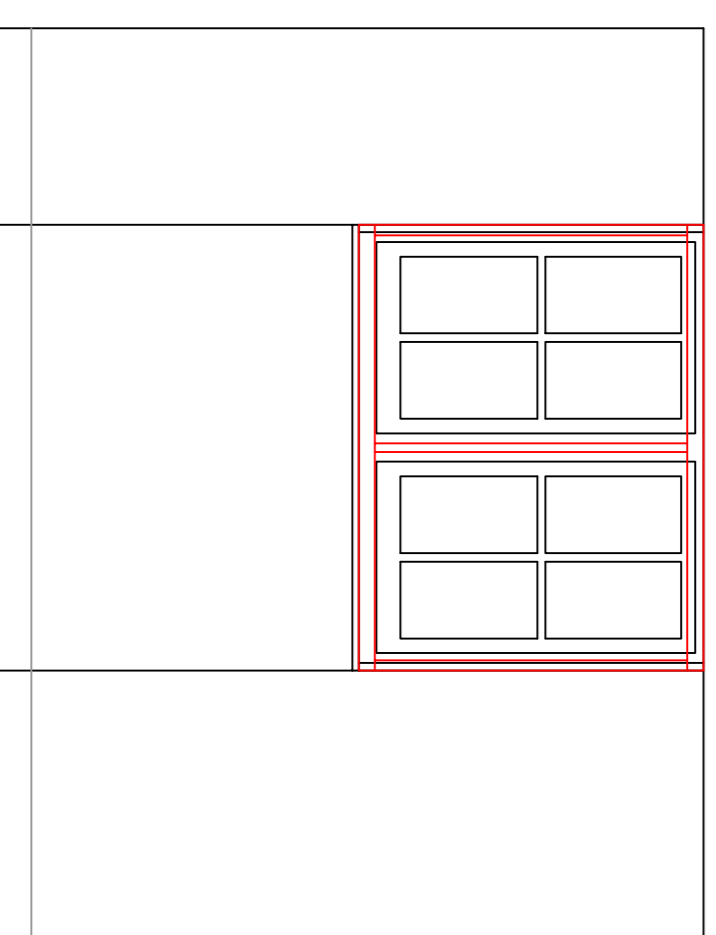


(M5)

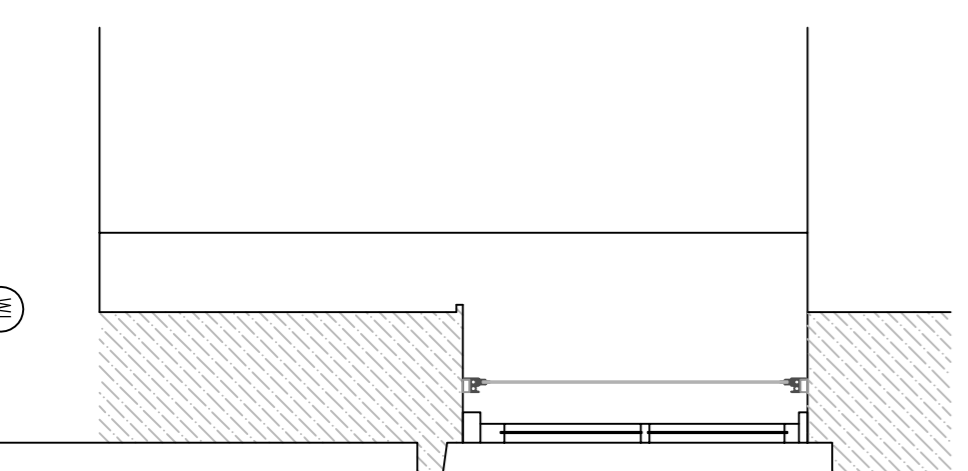


(M1)

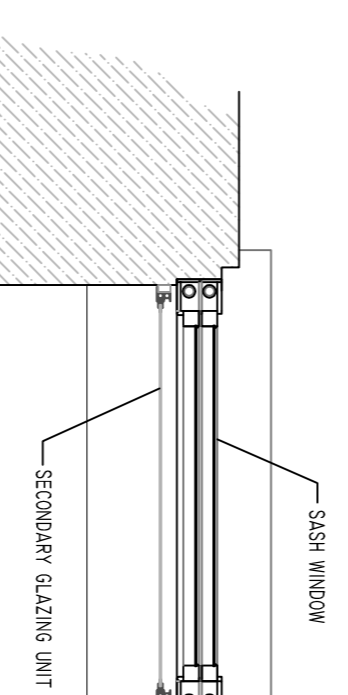
SECONDARY GLAZING UNITS TO BE SUPPLIED AND FITTED BY SELECTALAZE - SERIES 10 SLIMLINE HORIZONTAL SLIDER UNITS FINISHED IN WHITE



(M1)

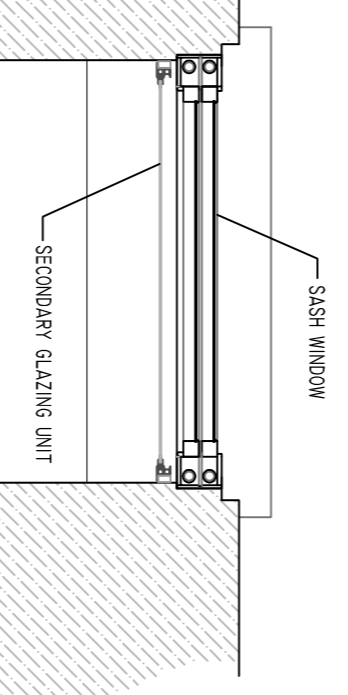


(M1)

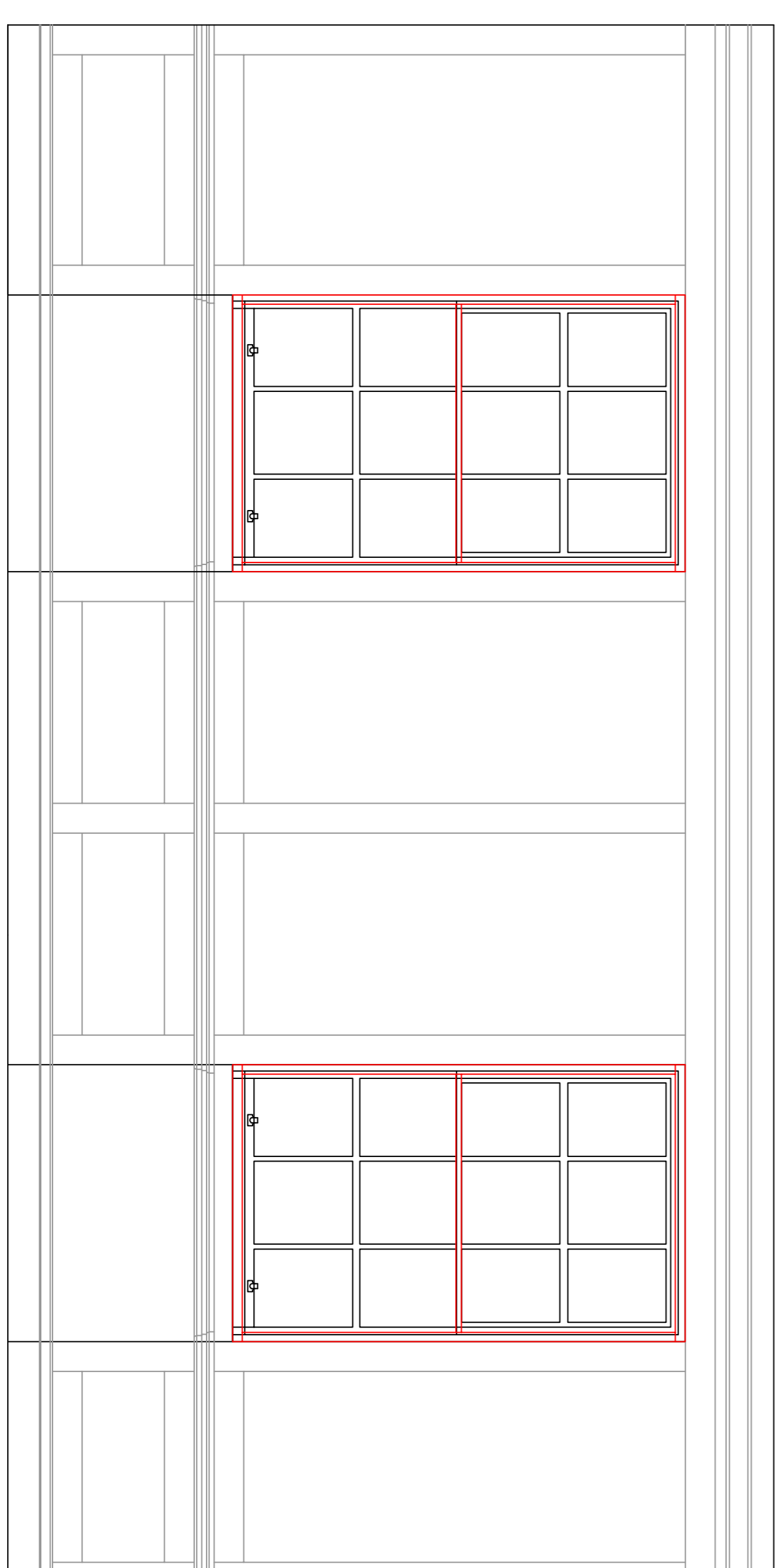


(M2)

SECONDARY GLAZING UNITS TO BE SUPPLIED AND FITTED BY SELECTALAZE - SERIES 20 SLIMLINE UNITS FINISHED IN WHITE

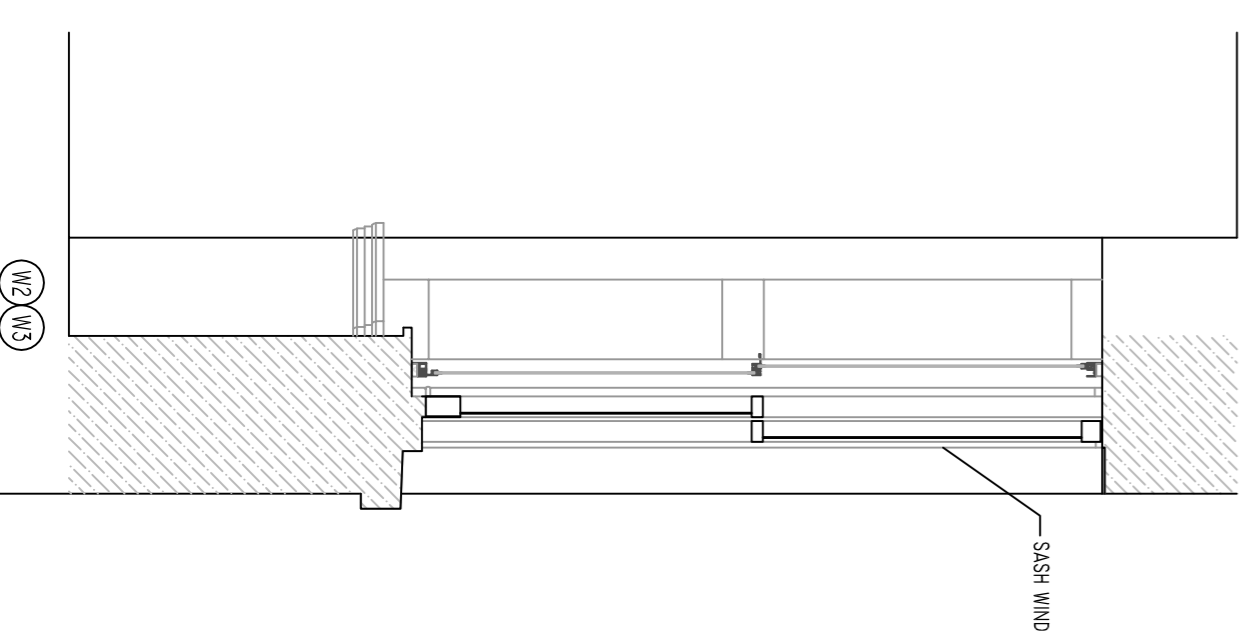


(M2)



(M2)

(M2)



(M2)

Revision	File No.
1	1064

Notes

Do not scale this drawing, use figured dimensions only.  
Mark Snook Planning accepts no responsibility for any errors made by others in scaling from this drawing.  
Copyright © Mark Snook Planning 2017.  
This drawing is Copyright and must not be reproduced, lent, or otherwise disclosed to any third party without the written consent of the owners of the Copyright.

## Mark Snook Planning

Town Planning Consultants.



marksnookplanning

The Pike House,  
Kingshill Road,  
Dursley, Glos,  
GL11 4BU

Telephone:  
01453 549336

Email:  
marksnookplanning@hotmail.com

Title:-  
Secondary Glazing Works to No1 South Square, The Honourable Society of Gray's Inn, London, WC1R 5HP

Client:-  
The Honourable Society of Gray's Inn

Drawing:-  
Proposed Secondary Glazing Details

Date:-  
25/05/2017

Scale:-  
1:20

Drawn:-  
MS