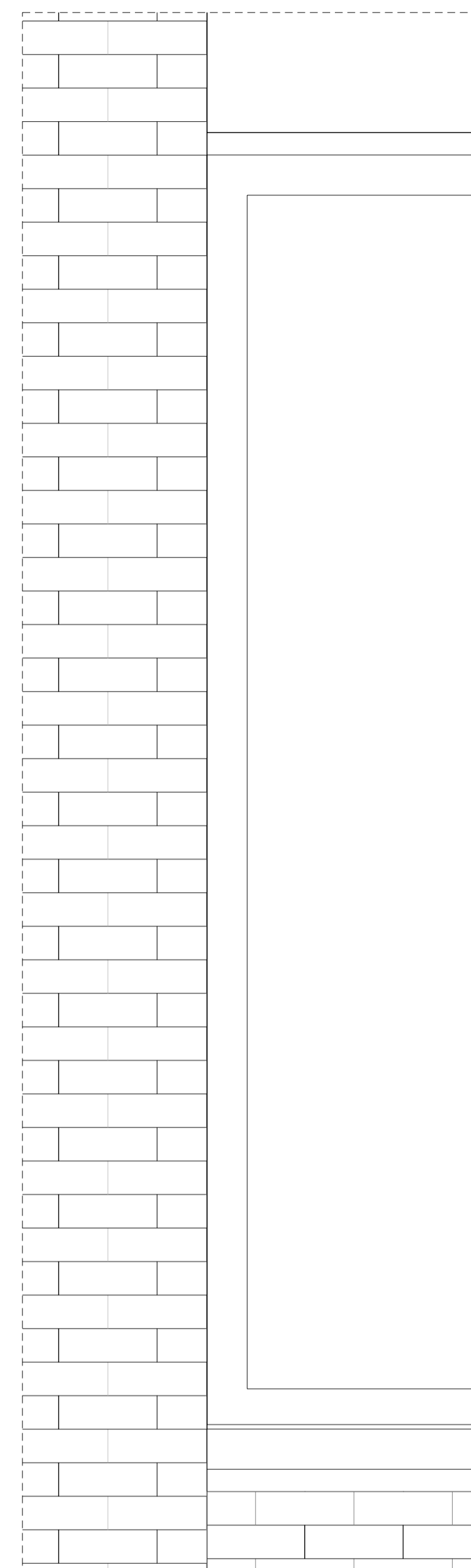
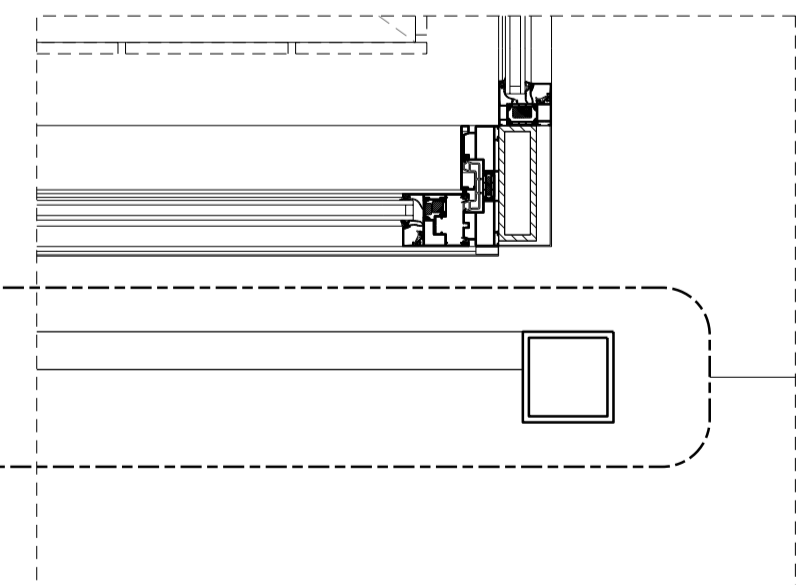
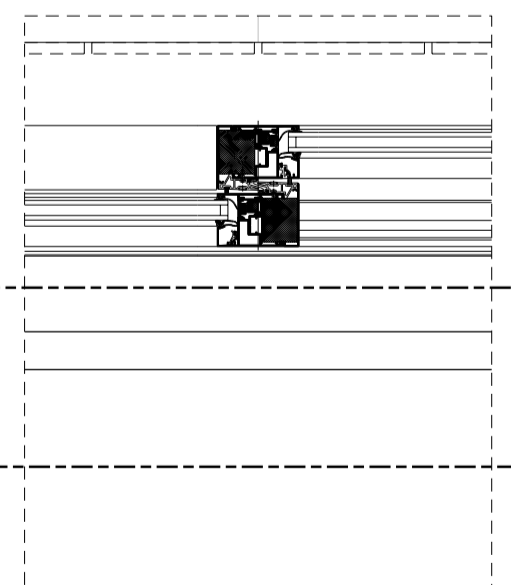
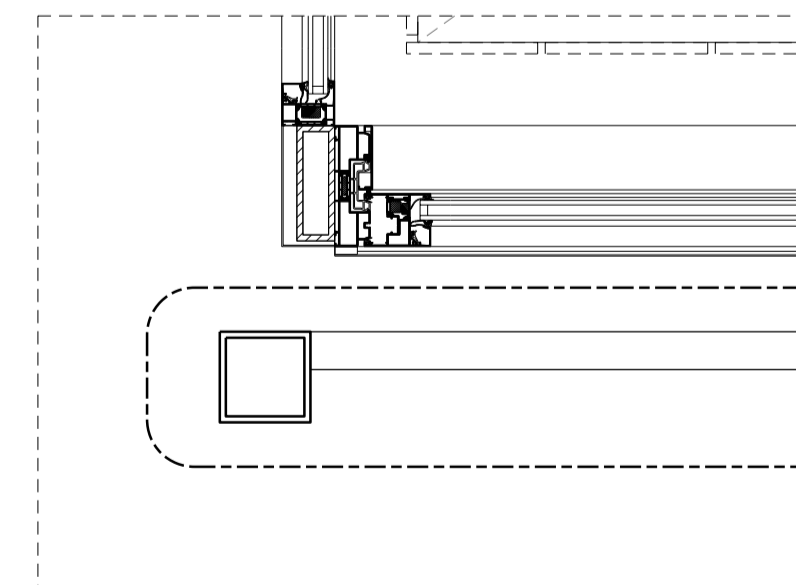
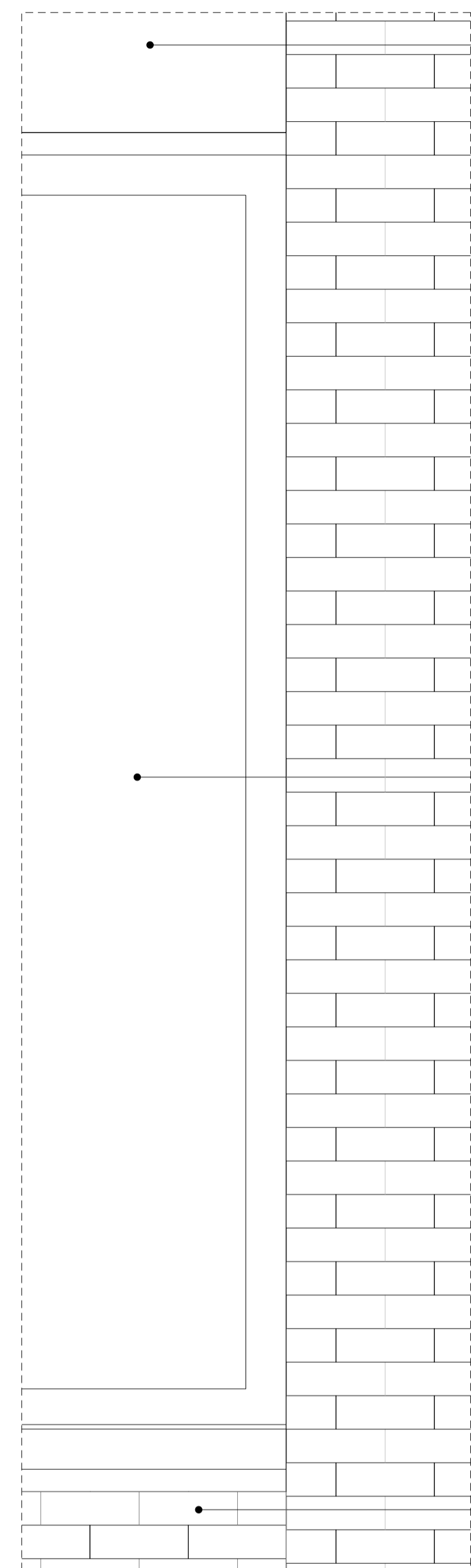
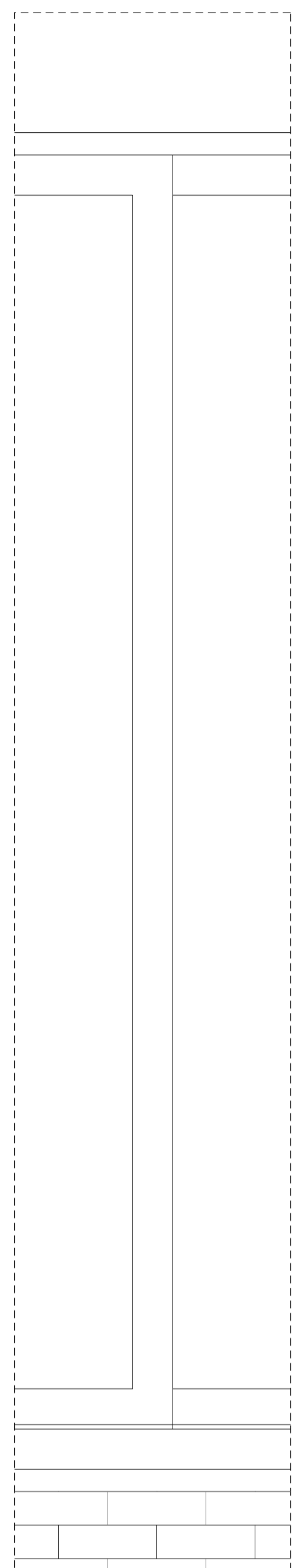


NOTES:

- Contractor designed elements are shown indicatively only for the purpose of defining design intent, including but not limited to technical performance, dimensional constraints, alignments, appearance, colour and finish. The contractor is to develop the detailed design of these elements and design responsibility, including for CDM purposes, rests with the contractor.
- Size of steel supports and structural elements are indicative only
- Submit fabrication drawings and samples to Ben Adams Architects for review of their general conformity with the design concept prior to manufacture. Refer to the Design Responsibility Matrix for this project for further details.
- For finishes, specifications and further details refer to outline specifications



02. TYPICAL SLIDING DOOR WINDOW DETAIL - EXTERNAL ELEVATION



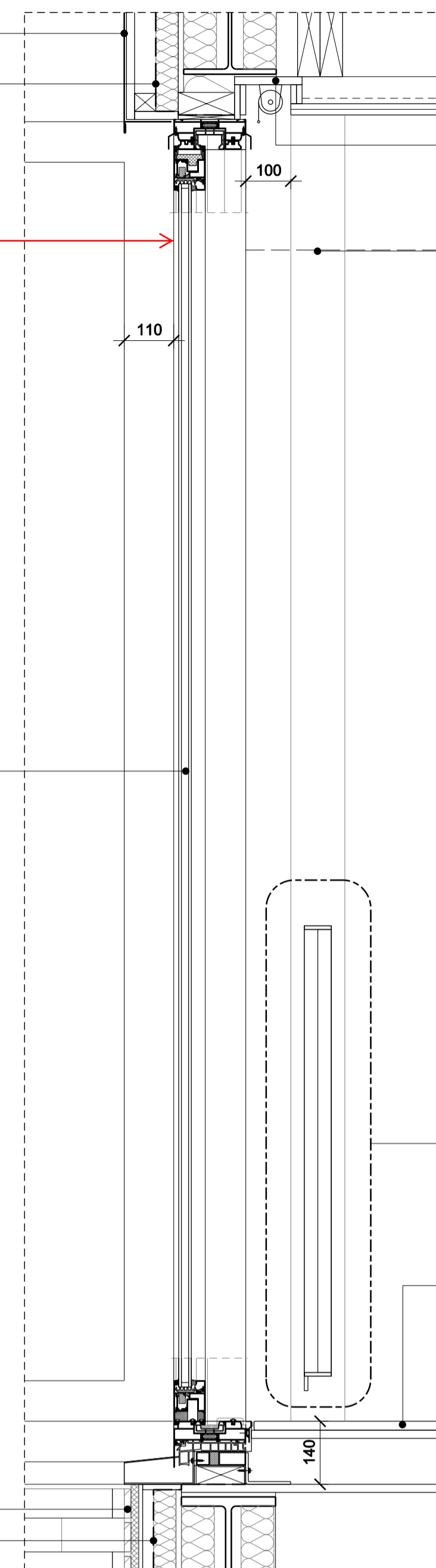
02. TYPICAL SLIDING DOOR WINDOW DETAIL - PLAN

external metal cladding on supporting structure
breather membrane

Refer to drawing A926 for specification of sliding door

DR-16

brick/ceramic slip cladding
breather membrane



03. TYPICAL SLIDING DOOR WINDOW DETAIL - SECTION

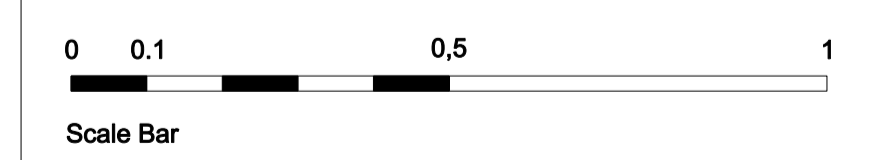
Painted MDF window head recess detail to conceal blind

120 x 120 mm SHS steel column

855.01

timber flooring

4th FLOOR FFL



REV.	DATE	DESCRIPTION	REV.	DATE	DESCRIPTION
-	30.09.2016	ISSUED FOR TENDER			
A	05.10.2016	ISSUED FOR TENDER			
B	17.10.2016	ISSUED FOR TENDER			
C	09.02.2017	STAGE 5 ISSUE			

NOTES:

- ALL DIMENSIONS IN MM UNLESS OTHERWISE STATED
- THIS DRAWING IS TO BE READ IN CONJUNCTION WITH ALL RELEVANT CONTRACT DOCUMENTS
- THIS DRAWING IS TO BE READ IN CONJUNCTION WITH ALL ENGINEER'S DRAWINGS
- DO NOT SCALE FROM THIS DRAWING
- REPORT ANY ERRORS, CONTRADICTIONS, & OMISSIONS TO THE ARCHITECT AS SOON AS POSSIBLE
- WHEN THIS DRAWING IS ISSUED IN DWG FORMAT IT IS AN UNCONTROLLED VERSION ISSUED TO ENABLE THE RECIPIENT TO PREPARE THEIR OWN DRAWINGS FOR WHICH THEY ARE SOLELY RESPONSIBLE. IT IS BASED ON BACKGROUND INFORMATION CURRENT AT TIME OF ISSUE. BEN ADAMS ARCHITECTS ACCEPTS NO LIABILITY FOR ANY SUCH ALTERATIONS OR ADDITIONS TO OR DISCREPANCIES ARISING OUT OF CHANGES TO SUCH BACKGROUND INFORMATION WHICH OCCUR AFTER IT IS ISSUED BY BEN ADAMS ARCHITECTS.

KEY:

Ben Adams Architects

Third Floor
19 Southbank Street
London SE1 0UP

T 020 7633 0000
ben@benadamsarchitects.co.uk
info@benadamsarchitects.co.uk

JOB NO: 15-035
SCALE: 1:20 @ A3 1:10 @ A1
STAGE: STAGE 5

DRAWING NAME: SLIDING WINDOWS DETAILS

PROJECT NAME: MINERVA HOUSE

DRAWING NO: A720/C